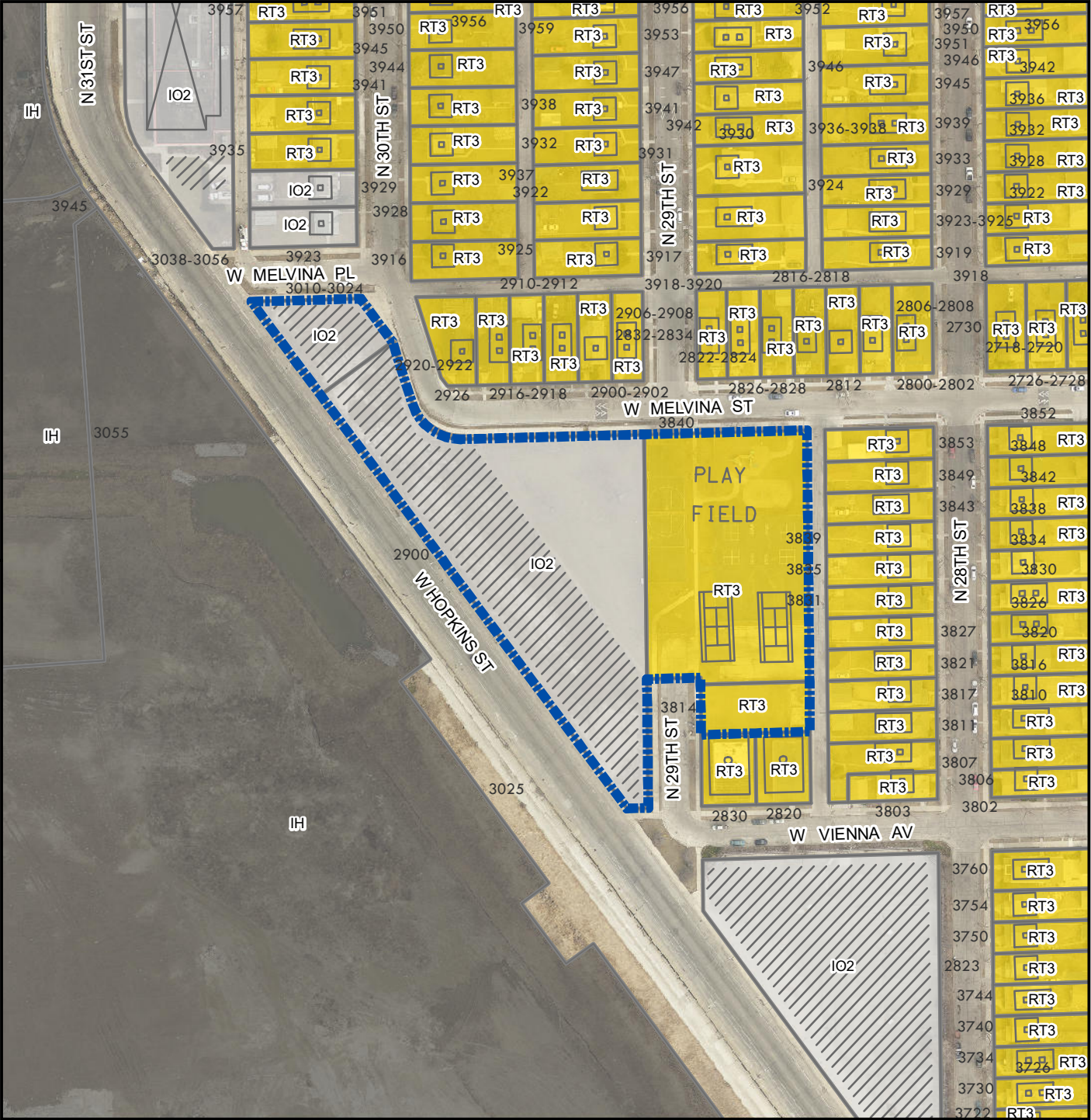


**File No. 211865**  
**3814 and 3840 N. 29th St**  
**& 2900 and 3010 W. Hopkins St**  
**IO2 and RT3 to PK**



**Legend**

-  Zoning Change Boundary
- Zoning**
-  Unknown or pending zone
- Zoning Category**
-  Residential - single family
-  Residential - two family
-  Residential - multi-family
-  Residential - residence and office
-  Central business district - civic activity
-  Central business district - high-density residential
-  Central business district - major retail
-  Central business district - mixed activity
-  Central business district - neighborhood retail
-  Central business district - office and service
-  Central business district - residential and specialty use
-  Central business district - warehousing and light manufacturing
-  Commercial - neighborhood shopping
-  Commercial - local business
-  Commercial - commercial service
-  Commercial - regional business
-  Industrial - commercial
-  Industrial - office
-  Industrial - light
-  Industrial - mixed
-  Industrial - heavy
-  Special - parks
-  Special - institutional
-  Special - planned development
-  Special - redevelopment district

