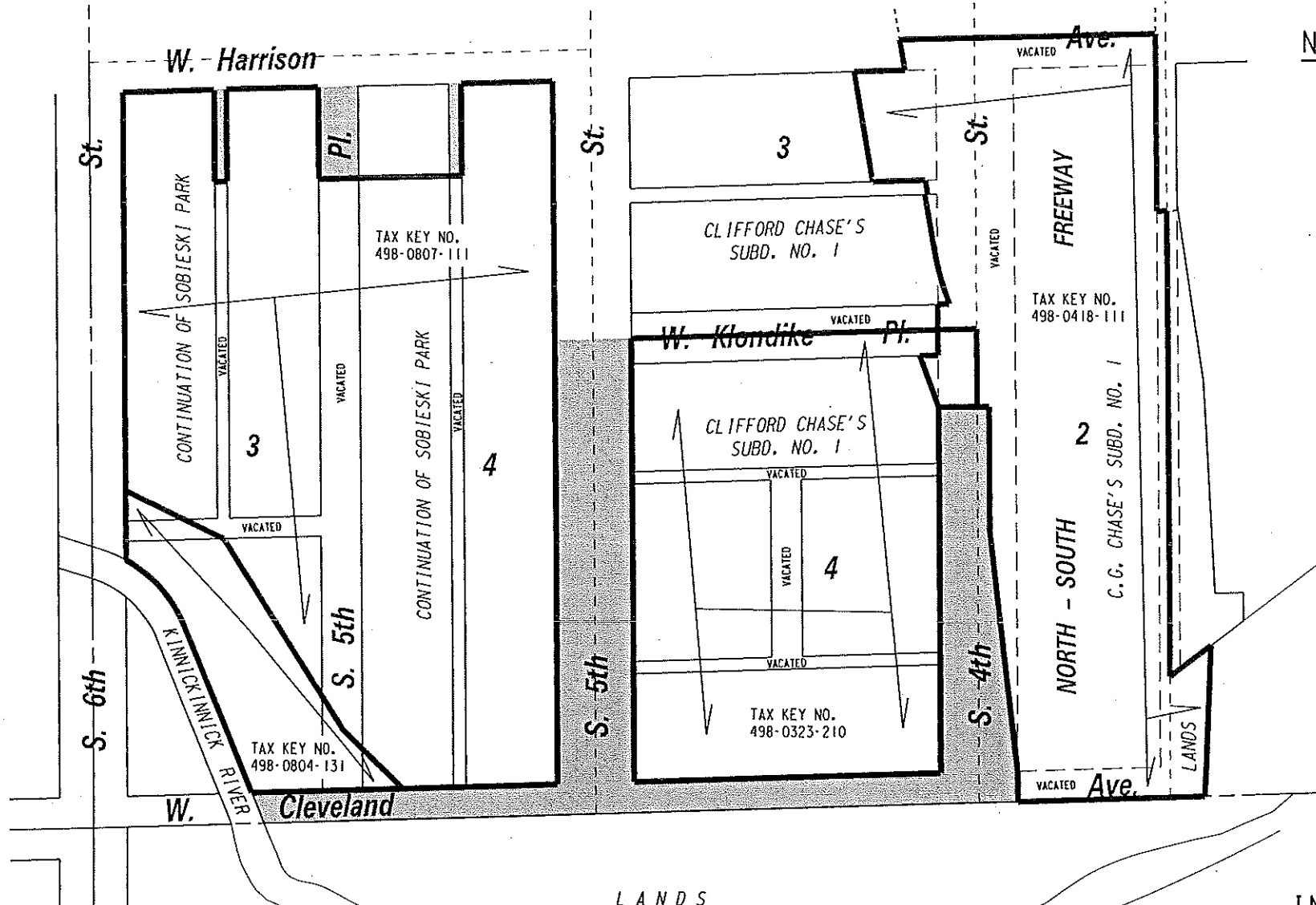


N.E. 1/4 SEC. 8, T.6N., R.22E.

498



(MAP 1 OF 5)

EXHIBIT "A"
 FILE NO. 150183
 INFRASTRUCTURE SERVICES DIVISION

MILWAUKEE, WISCONSIN

ASSIGNED TO: W. FUCHS

CH'K'D. BY: W. FUCHS

DRAWN BY: W.F.

DATE: JUNE 18, 2015

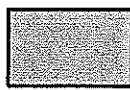
PROJECT/GRANT NO.: WK52337372

SCALE: 1" = NTS

APPROVED BY:

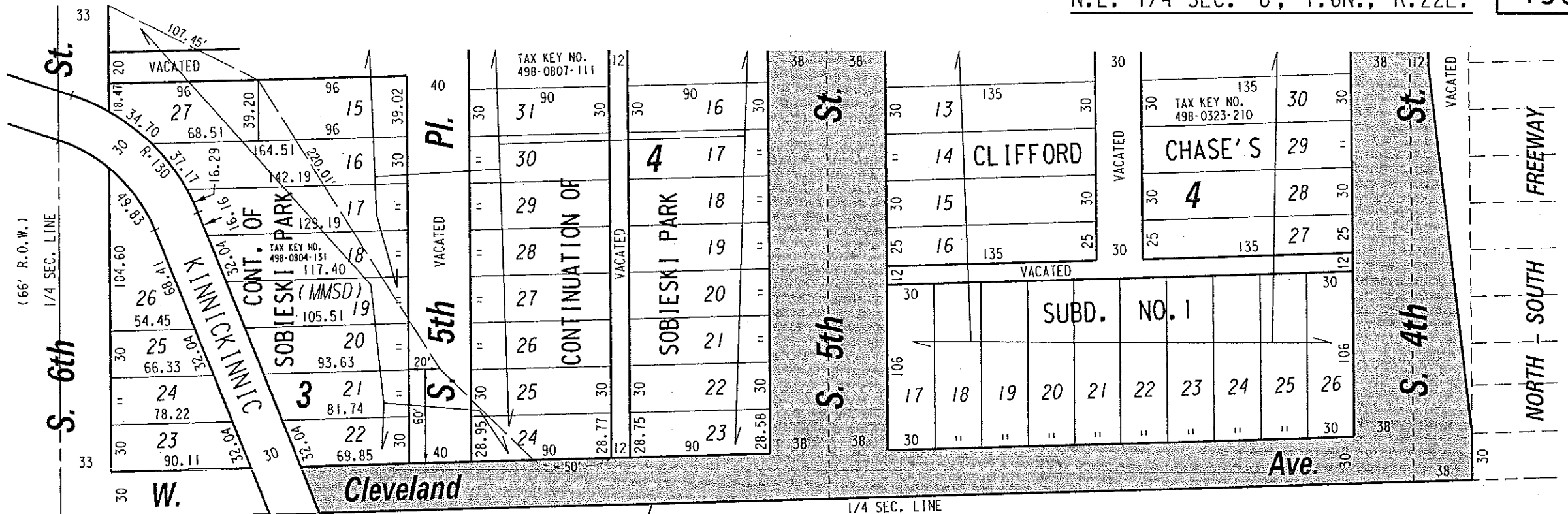
[Signature]
 CENTRAL DRAFTING & RECORDS MANAGER


[Signature]
 CIVIL ENGINEER

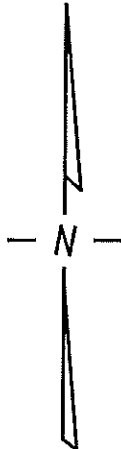
 PUBLIC STREETS AND ALLEYS PROPOSED TO BE VACATED

N.E. 1/4 SEC. 8, T.6N., R.22E.

498



 PUBLIC STREETS
PROPOSED TO
BE VACATED



KINNICKINNIC RIVER PARKWAY

(MAP 2 OF 5)

EXHIBIT "A"
FILE NO. 150183
INFRASTRUCTURE SERVICES DIVISION

MILWAUKEE, WISCONSIN

ASSIGNED TO: W. FUCHS

CH'K'D. BY: W. FUCHS

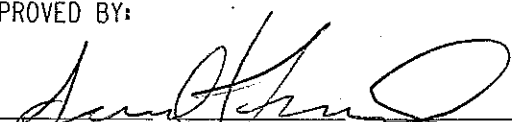
DRAWN BY: W.F.


DATE: JUNE 18, 2015

PROJECT/GRANT NO.: WK52337372

SCALE: 1" = 80'

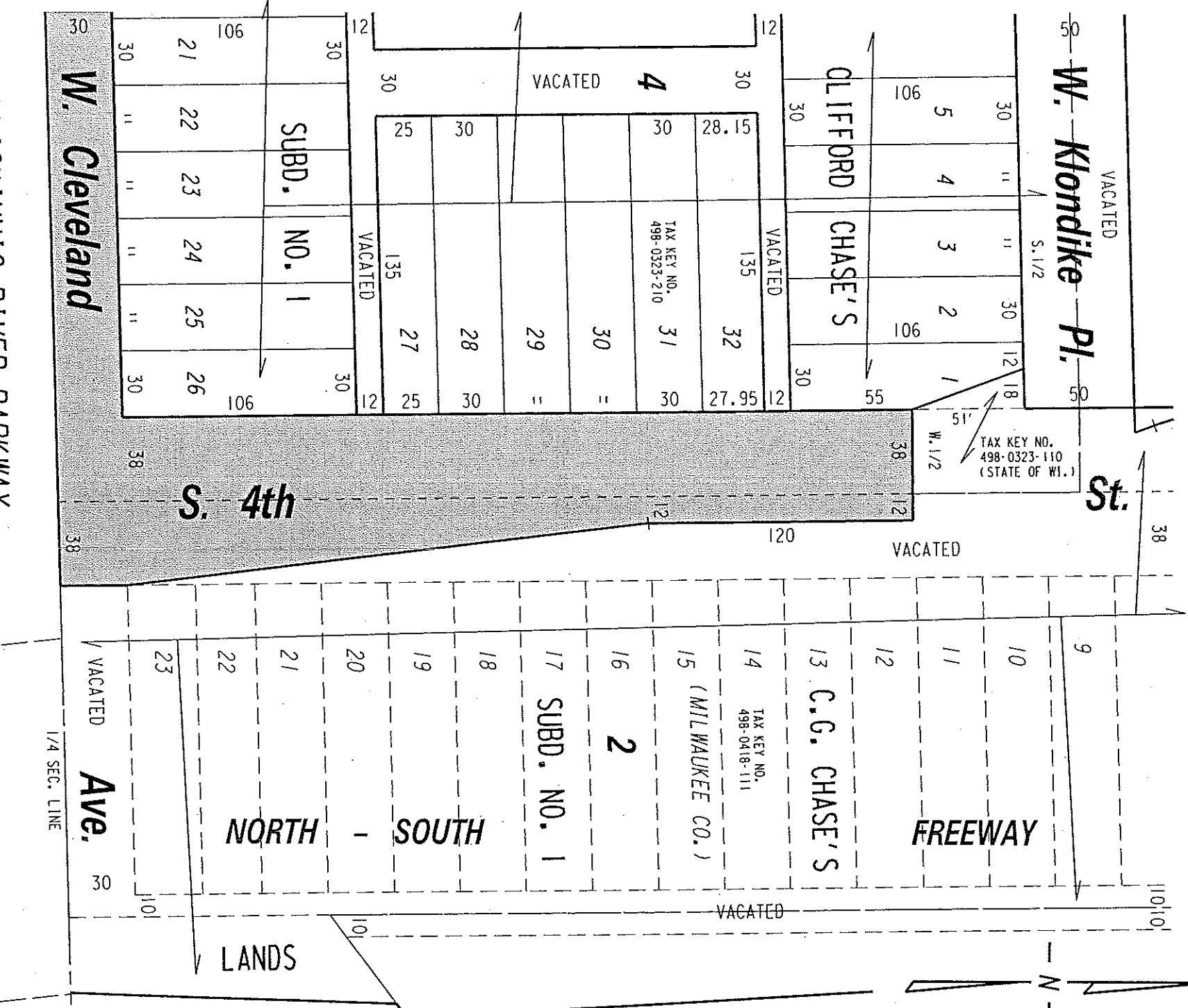
APPROVED BY:


CENTRAL DRAFTING & RECORDS MANAGER


CITY ENGINEER

N.E. 1/4 SEC. 8, T.6N., R.22E.

498



KINNICKINNIC RIVER PARKWAY

(MAP 3 OF 5)

EXHIBIT "A"

FILE NO. 150183

INFRASTRUCTURE SERVICES DIVISION

MILWAUKEE, WISCONSIN

ASSIGNED TO: W. FUCHS

CH'K'D. BY: W. FUCHS

DRAWN BY: W.F.

DATE: JUNE 18, 2015

PROJECT/GRANT NO.: WKS2337372

SCALE: 1" = 60'

APPROVED BY:

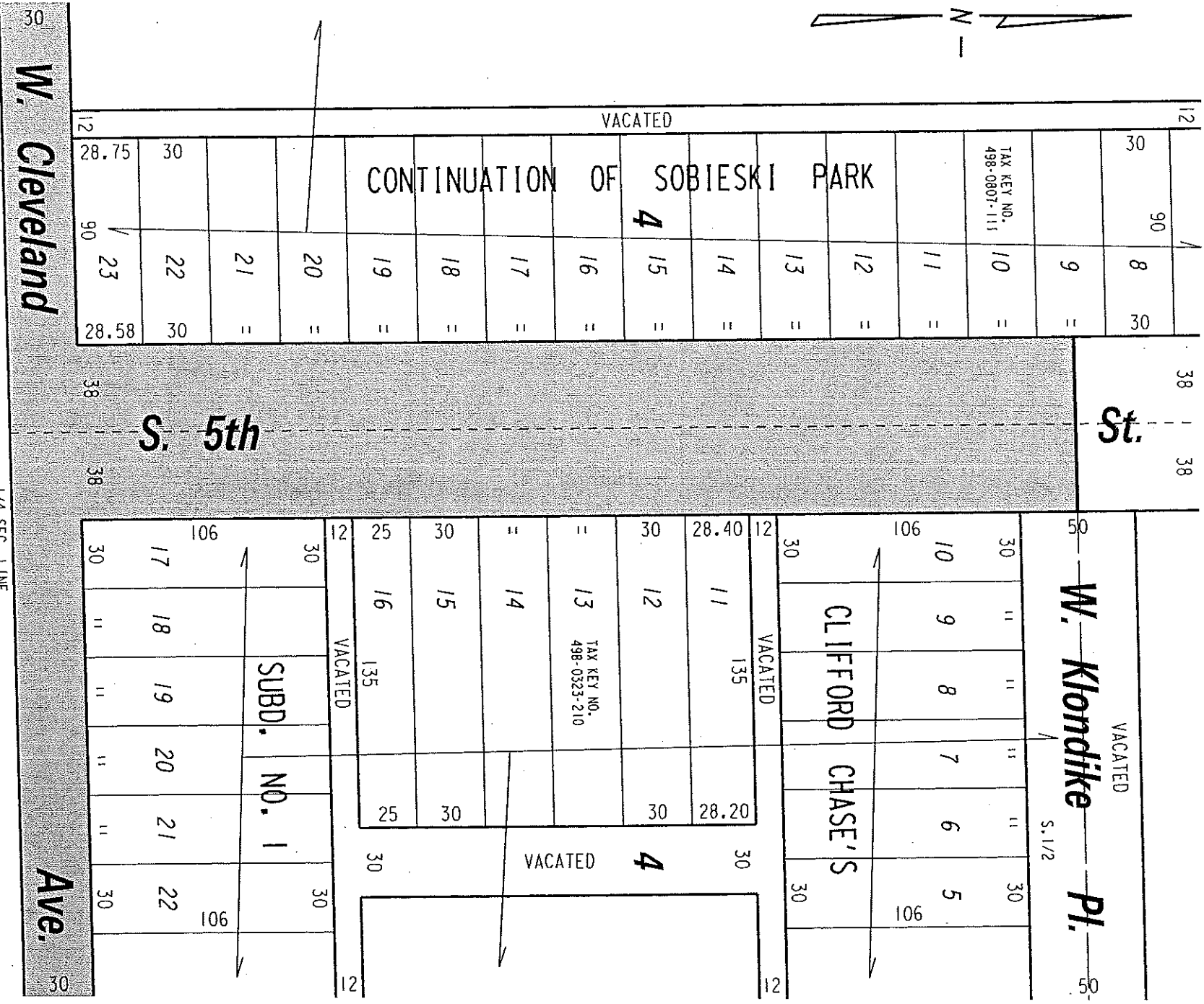
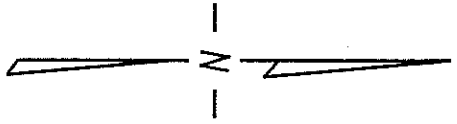
PUBLIC STREETS
PROPOSED TO
BE VACATED

CENTRAL DRAFTING & RECORDS MANAGER

CIVIL ENGINEER

N.E. 1/4 SEC. 8, T.6N., R.22E.

498




 PUBLIC STREETS
 PROPOSED TO
 BE VACATED

KINNICKINNIC RIVER PARKWAY
 (MAP 4 OF 5)

EXHIBIT "A"
 FILE NO. 150183
 INFRASTRUCTURE SERVICES DIVISION
 MILWAUKEE, WISCONSIN

ASSIGNED TO: W. FUCHS
 DRAWN BY: W.F.
 PROJECT/GRANT NO.: WK52337372
 APPROVED BY:

CH'K'D. BY: W. FUCHS
 DATE: JUNE 18, 2015
 SCALE: 1" = 60'


 CENTRAL DRAFTING & RECORDS MANAGER

 CITY ENGINEER

W. Harrison Ave.

(60' R.O.W.)

Ave.

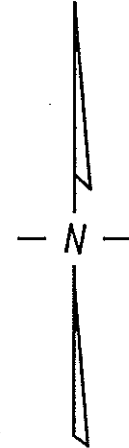
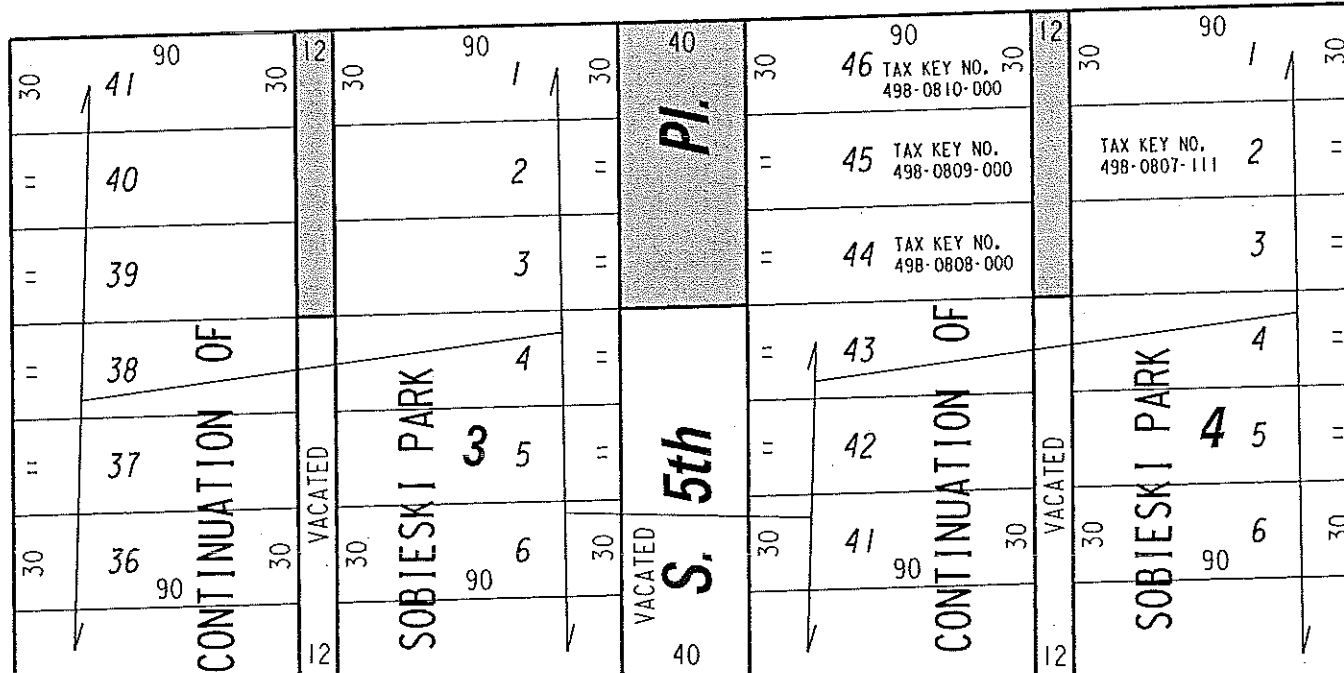
(66' R.O.W.)

S. 6th St.

1/4 SEC. LINE

33

33



(MAP 5 OF 5)

PUBLIC STREETS AND ALLEYS PROPOSED TO BE VACATED

EXHIBIT "A"
FILE NO. 150183

INFRASTRUCTURE SERVICES DIVISION

MILWAUKEE, WISCONSIN

ASSIGNED TO: W. FUCHS

CH'K'D. BY: W. FUCHS

DRAWN BY: W.F.

DATE: JUNE 18, 2015

PROJECT/GRANT NO.: WK52337372

SCALE: 1" = 60'

APPROVED BY:

[Signature]
CENTRAL DRAFTING & RECORDS MANAGER

[Signature]
CITY ENGINEER

Ave.

W. Harrison

St.

St.

St.

3

CLIFFORD CHASE'S
SUBD. NO. 1

(MILWAUKEE CO.)

W. Klondike Pl.

TAX KEY NO.
498-0418-111

CLIFFORD CHASE'S
SUBD. NO. 1

2

C.G. CHASE'S SUBD. NO. 1

4

TAX KEY NO.
498-0323-210

NORTH - SOUTH

LANDS

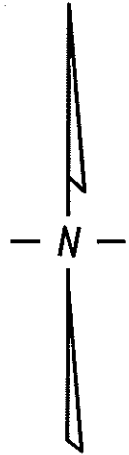
VACATED Ave.

CONTINUATION OF SOBIESKI PARK
VACATED
3
VACATED
CONTINUATION OF SOBIESKI PARK
VACATED
4
S. 5th
KINNICKINNICK RIVER
(MMSD)
S. 6th
W. Cleveland
TAX KEY NO.
498-0804-131

4

S. 5th

S. 4th



 PUBLIC STREETS AND ALLEYS PROPOSED TO BE VACATED

 LAND REVERSION AFTER VACATION

FILE NO. 150183
INFRASTRUCTURE SERVICES DIVISION
MILWAUKEE, WISCONSIN