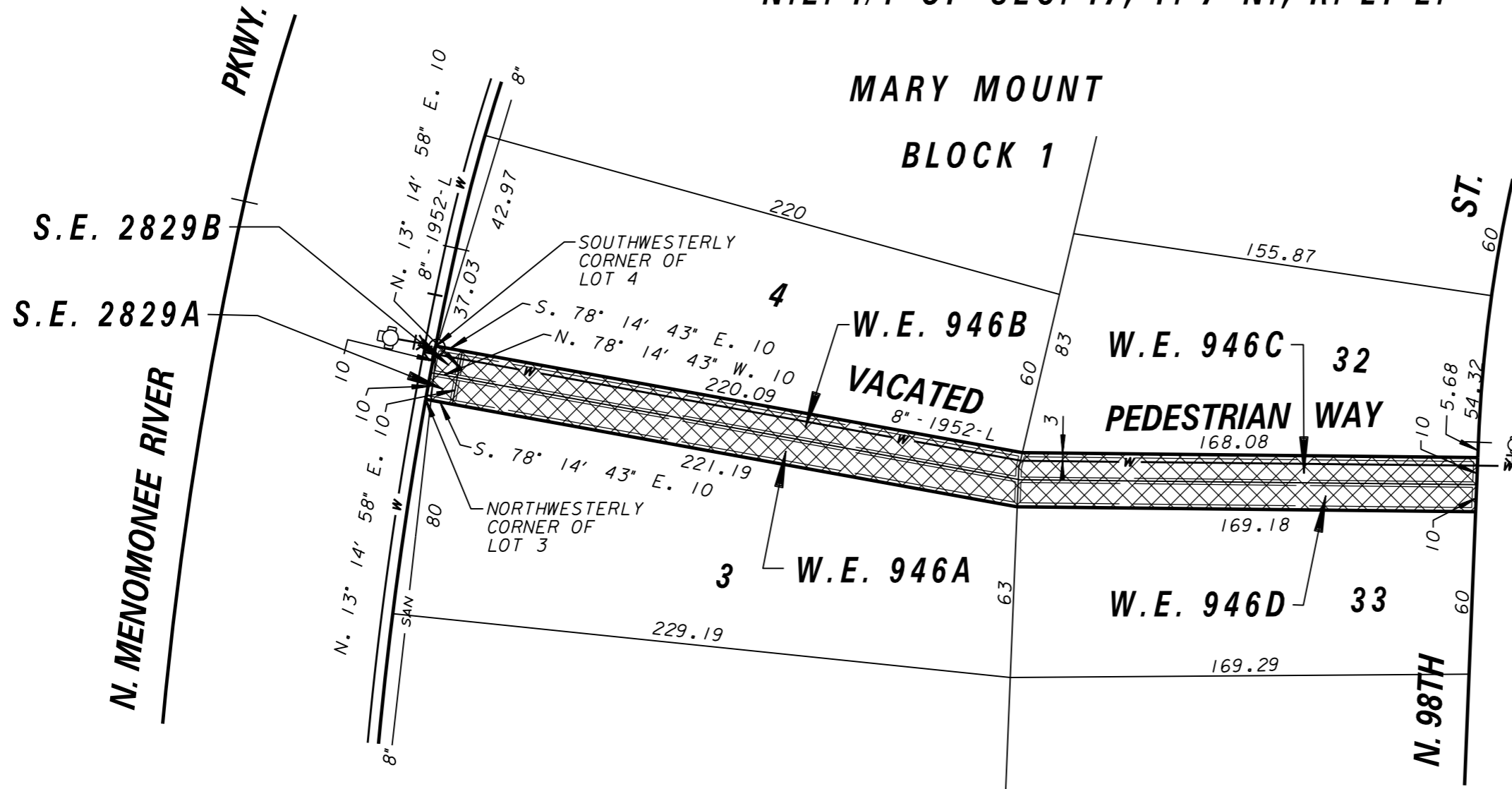


N.E. 1/4 OF SEC. 17, T. 7 N., R. 21 E.

MARY MOUNT
BLOCK 1



N. COLONIAL DR.

WATER EASEMENT W.E. 946
SEWER EASEMENT S.E. 2829



Milwaukee Water Works		Water Engineering	
		Department of Public Works Milwaukee, Wisconsin	
WATER EASEMENT			
IN	VACATED PEDESTRIAN WAY		
AT	NORTH COLONIAL DRIVE EXTENDED		
FROM	NORTH 98TH STREET		
TO	NORTH MENOMONEE RIVER PARKWAY		
SCALE	1" = 50'	APPROVED	DATE
1/4 SEC. NO.	301	<i>Michael J. Hall</i>	12-28-11
PLAN DATE	12-6-11		MAINS DESIGN ENGINEER
DRAWN BY	P.W.P.	<i>Amal S. Bant</i>	12-28-11
CHECKED BY			CHIEF DESIGN ENGINEER
REVIEWED BY		<i>C. Lewis</i>	1-4-12
WORK ORDER	0232		SPECIAL DEPUTY COMMISSIONER OF PUBLIC WORKS