



Certificate of Appropriateness

Milwaukee Historic Preservation Commission/841 N. Broadway Room B-1/Milwaukee, WI 53202/phone 414-286-5712/414-286-5722

Property	2433 N. WAHL AV. North Point North Historic District
Description of work	The new landscape plan will include portions of lawn, brick borders and walkways, a bluestone patio, an ornamental garden wall and various planting beds. There will also be an assortment of types of lighting installed, as shown. Most will be downlights with some up lighting at the house and into trees. Low wattage will be used and it will not negatively impact the neighbors.
Date issued	11/15/2022
	PTS ID 115346 COA New rear landscape

In accordance with the provisions of Section 320-21 (11) and (12) of the Milwaukee Code of Ordinances, the Milwaukee Historic Preservation Commission has issued a certificate of appropriateness for the work listed above. The work was found to be consistent with preservation guidelines. The following conditions apply to this certificate of appropriateness:

All work to use natural stone as indicated in the application. Lighting will consistently mostly of low watt fixtures, and will not negatively impact the neighbors. If the permitting section requires lower wattage and lighting, or there are complaints about the lighting, HPC staff will revisit the matter.

All work must be done in a craftsman-like manner, and must be completed within one year of the date this certificate was issued. Staff must approve any changes or additions to this certificate before work begins. Work that is not completed in accordance with this certificate may be subject to correction orders or citations. If you require technical assistance, please contact Carlen Hatala of the Historic Preservation staff as follows: Phone: (414) 286-5722; or Tim Askin at (414) 296-5722. E-mail: carlen.hatala@milwaukee.gov or Tim Askin at hpc@milwaukee.gov

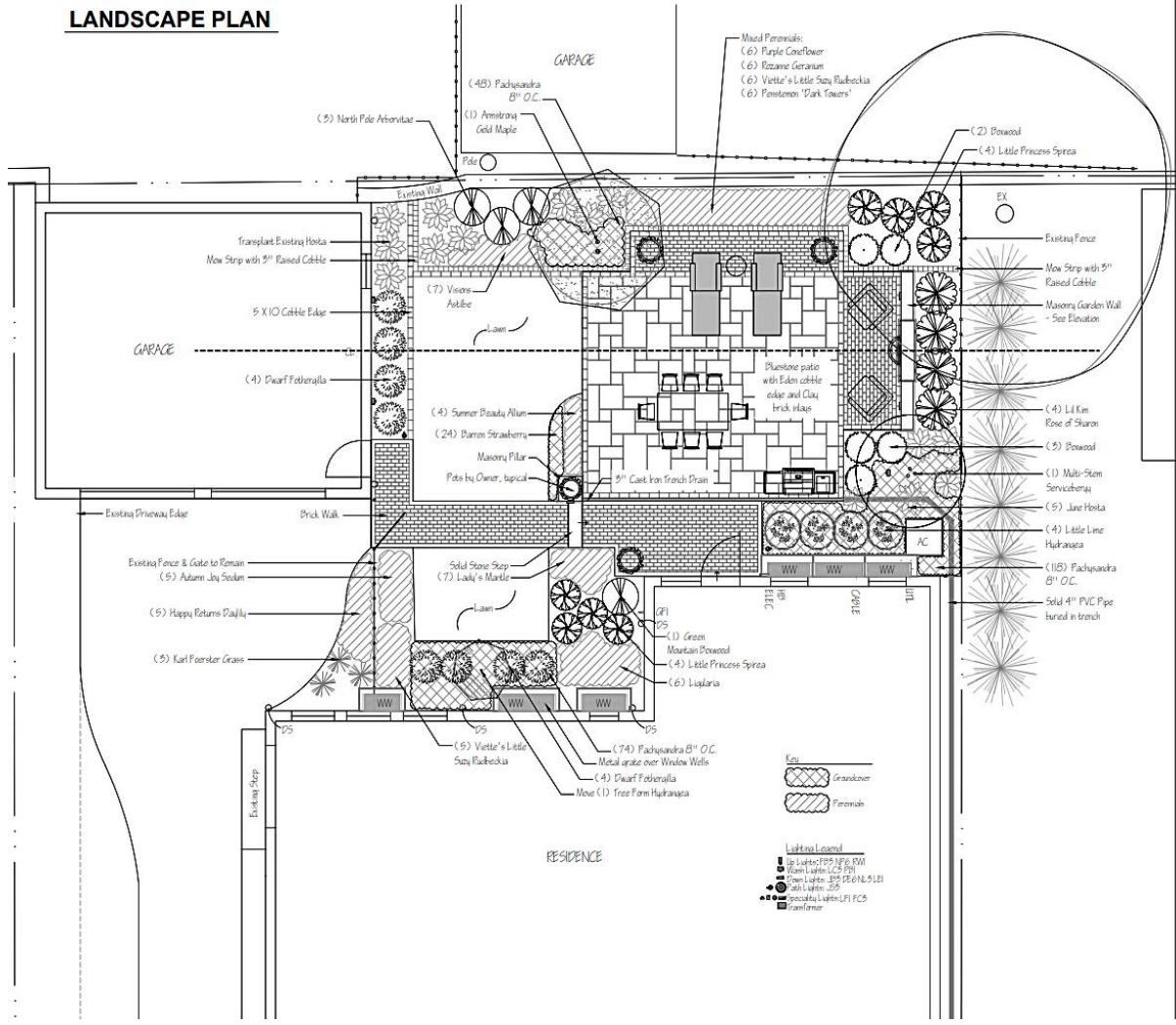
If permits are required, you are responsible for obtaining them from the Milwaukee Development Center. If you have questions about permit requirements, please consult the Development Center's web site, www.milwaukee.gov/build, or call (414) 286-8210.

Calvin Hotel

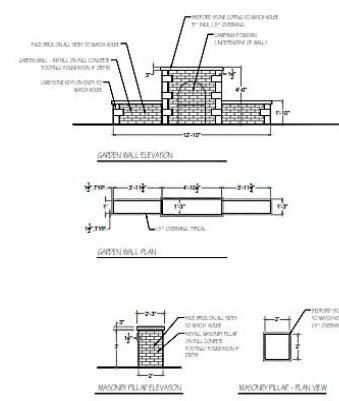
City of Milwaukee Historic Preservation Staff

Copies to: Development Center, 3rd Dist. Amanda Cervantes

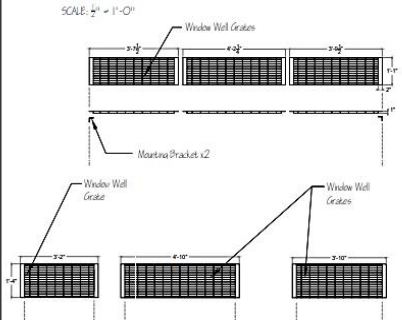
LANDSCAPE PLAN



GARDEN WALL DETAILS



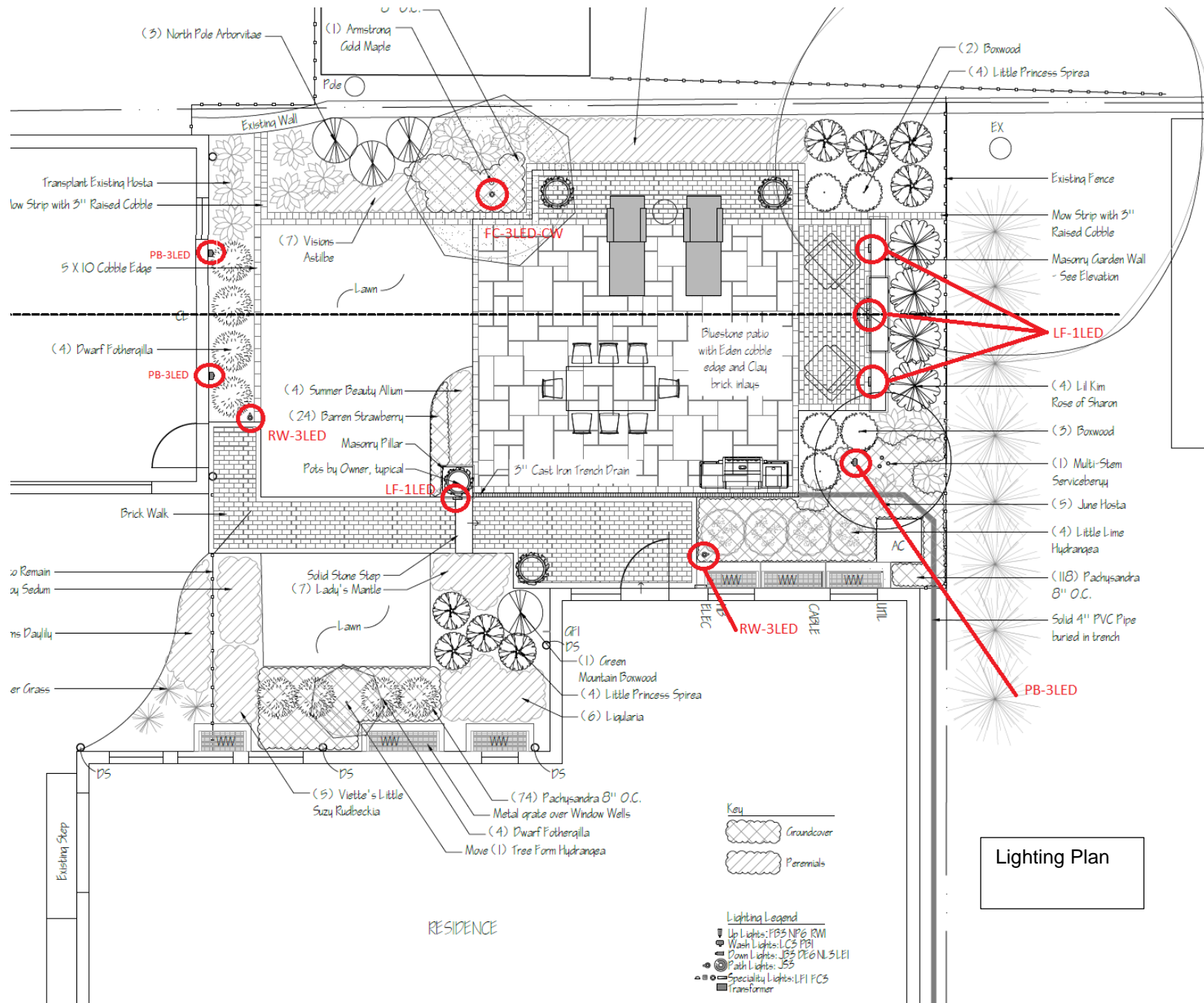
WINDOW WELL GRATES



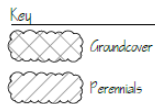
11515 W Carmen Ave.
Milwaukee, WI 53226
P: 414-897-8232
F: 414-897-8539
landcrafterslandscaping.com
Crafting Quality of Life

LANDSCAPE DEVELOPMENT PLAN
THE KUEHL RESIDENCE
2433 N Wahi Avenue
Milwaukee, WI 53211

DATE: 08/29/2022
DESIGNER: NJM
SCALE: 1/4" = 1'-0"
REVISIONS: 10.10.2022
Date Printed:



Lighting Plan



- Lighting Legend**
- Up Lights: PB5 NP6 RM
 - Wash Lights: LCS PBI
 - Down Lights: PB5 PE6 NL3LE1
 - Path Lights: J55
 - Specialty Lights: LFI PCS
 - Transformer



PROJECT _____

CATALOG # _____

TYPE _____

NOTES _____



Louver (LV)



PROJECT _____

CATALOG # _____

TYPE _____

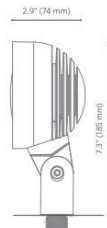
NOTES _____

RW Path/Up Light DESIGNER PLUS

Practical directional down light in 1, 3, 6, or 9 LED. Aluminum construction. An RGBW version is also available for use with Luxor® system.

Quick Facts

- Die-cast aluminum
- Two-layer marine-grade anodization and powder coat finish
- Cree® integrated LEDs
- ProAim™ adjustability
- Tamper-resistant features
- Color temperature filters
- Compatible with Luxor technology
- Phase and PWM dimmable
- Input voltage: 10-15V



LANDSCAPE LIGHTING

FC Well Light DESIGNER PREMIUM

Cylindrical in-grade fixture with versatile faceplate options in 1, 3, 6, or 9 LED. An RGBW version is also available for use with Luxor® system.

Quick Facts

- Die-cast brass or aluminum construction
- Two-layer marine-grade anodization and powder coat finish
- Cree® integrated LEDs
- Tamper-resistant features
- Color temperature filters
- Compatible with Luxor technology
- Phase and PWM dimmable
- Input voltage: 10-15V



LANDSCAPE LIGHTING

LF LED Wall Light DESIGNER PREMIUM



PROJECT _____

CATALOG # _____

TYPE _____

NOTES _____

PROJECT _____

CATALOG # _____

TYPE _____

NOTES _____



The LF is our LED under-the-cap hardscape wall light. It can easily be fitted between a block wall and capstone for a neat, clean installation. Due to its modular bracket design, the LF can even be installed under railings and existing construction.

Quick Facts

- Die-cast brass housing
- Natural, powder coated, or antiqued brass finishes
- Lumileds® Integrated LEDs
- Compatible with Luxor® technology
- Phase and PWM dimmable
- Input voltage: 10-15V

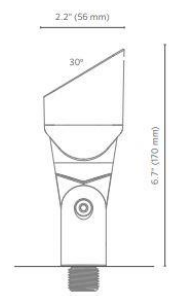


PB Up Light DESIGNER PLUS

Medium-sized wall wash light in 1 or 3 LED. Available in brass construction. RGBW capable with Luxor® ZDC systems.

Quick Facts

- Brass construction
- Natural or antique brass finishes
- Cree® integrated LEDs
- ProAim™ adjustability
- Tamper-resistant features
- Color temperature filters
- Compatible with Luxor technology
- Phase and PWM dimmable
- Input voltage: 10-15V





PROJECT _____

CATALOG # _____

TYPE _____

NOTES _____

RW Path/Up Light **DESIGNER PLUS**

Practical directional down light in 1, 3, 6, or 9 LED. Aluminum construction. An RGBW version is also available for use with **Luxor**® system.

Quick Facts

- Die-cast aluminum
- Two-layer marine-grade anodization and powder coat finish
- Cree® integrated LEDs
- ProAim™ adjustability
- Tamper-resistant features
- Color temperature filters
- Compatible with Luxor technology
- Phase and PWM dimmable
- Input voltage: 10-15V



LANDSCAPE LIGHTING