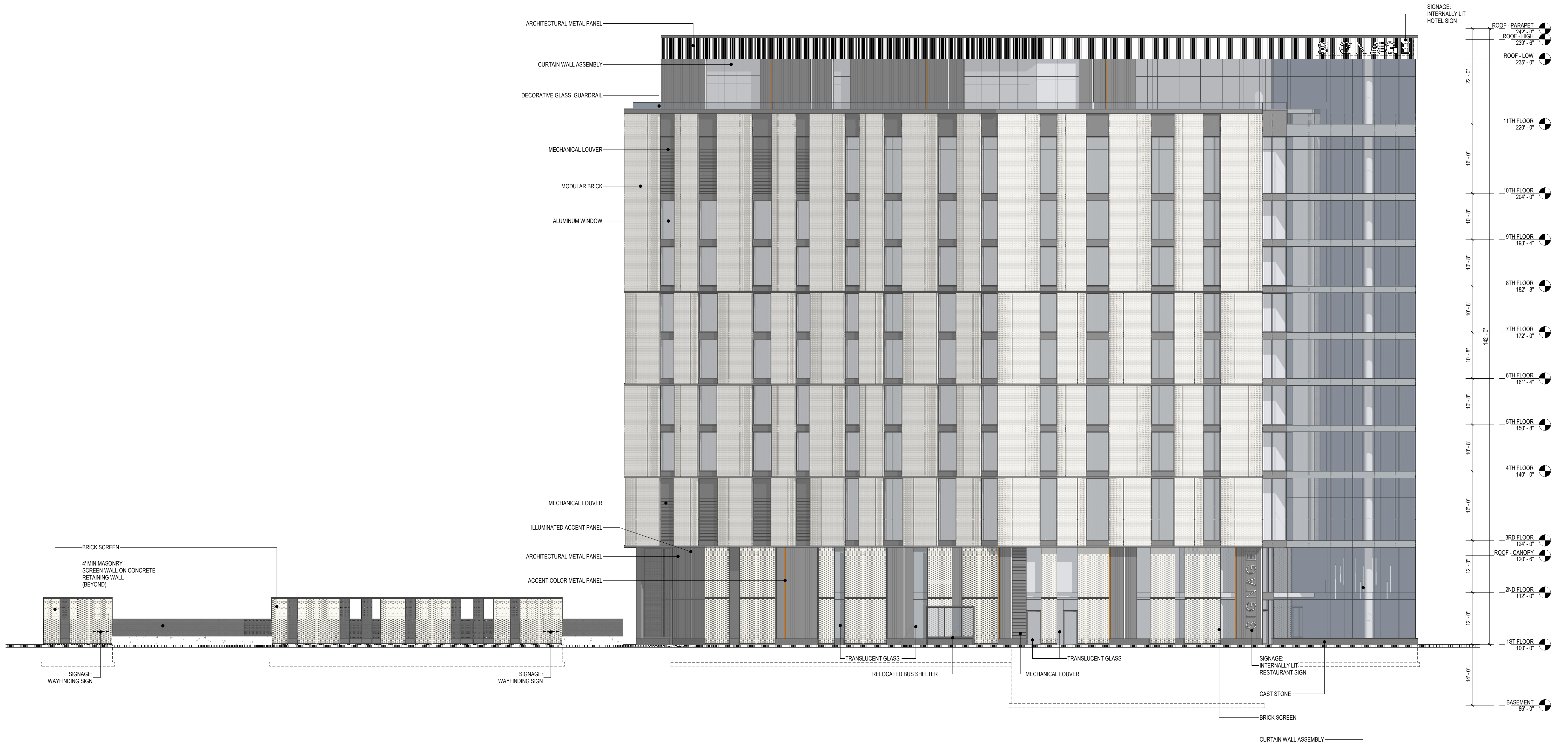


1 NORTH ELEVATION  
 3/32" = 1'-0"  
 0 4 8 16 32







1 WEST ELEVATION (CAMBRIDGE AVE)

3/32" = 1'-0"





Kahler Slater

A41

**BUILDING PERSPECTIVE**

DPD SUBMITTAL | KAHLER SLATER | COPYRIGHT 2023 | ALL RIGHTS RESERVED | 02.22.23



Kahler Slater

A42

BUILDING PERSPECTIVE

DPD SUBMITTAL | KAHLER SLATER | COPYRIGHT 2023 | ALL RIGHTS RESERVED | 02.22.23

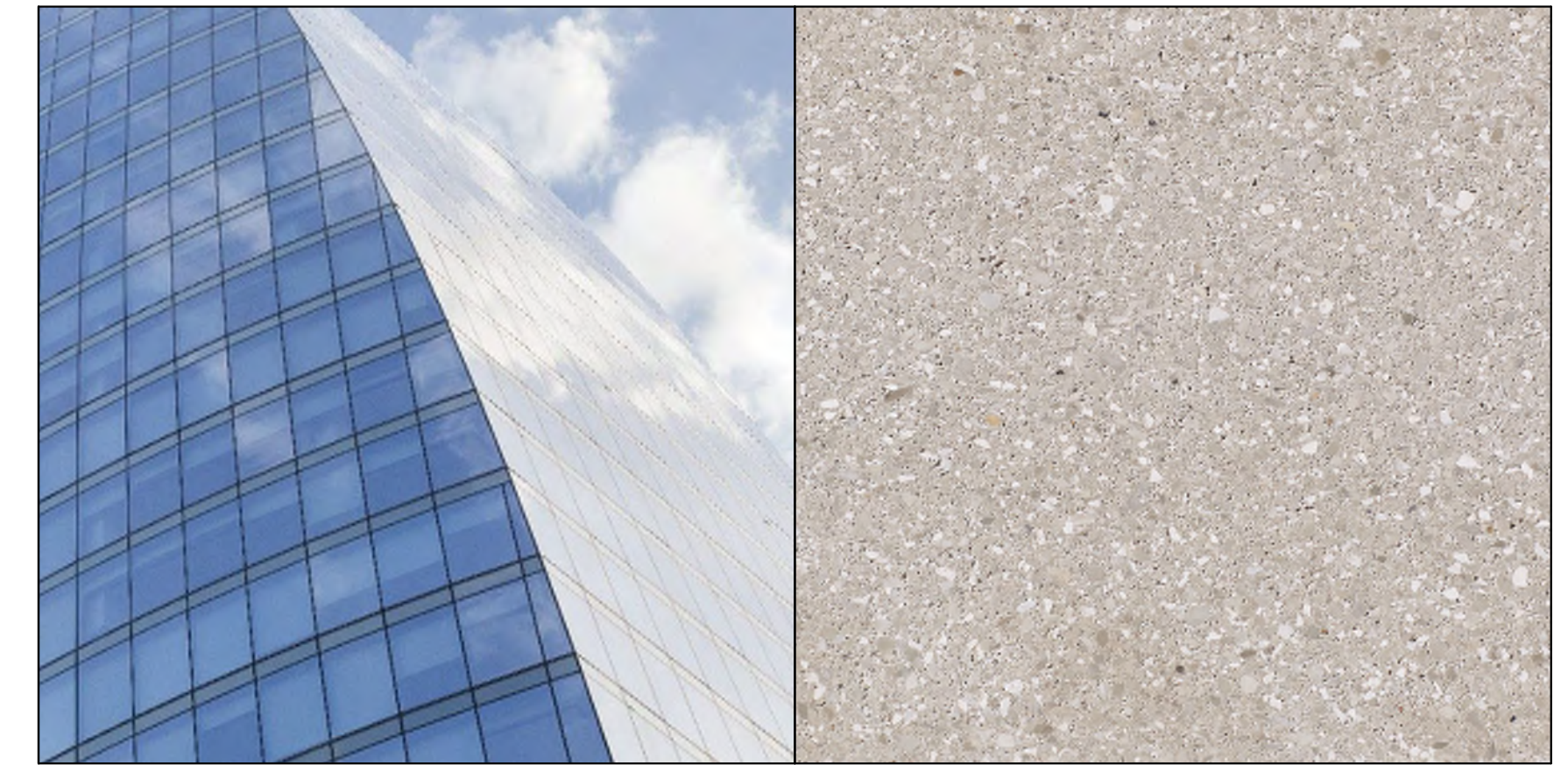


**Kahler Slater**

**A43**

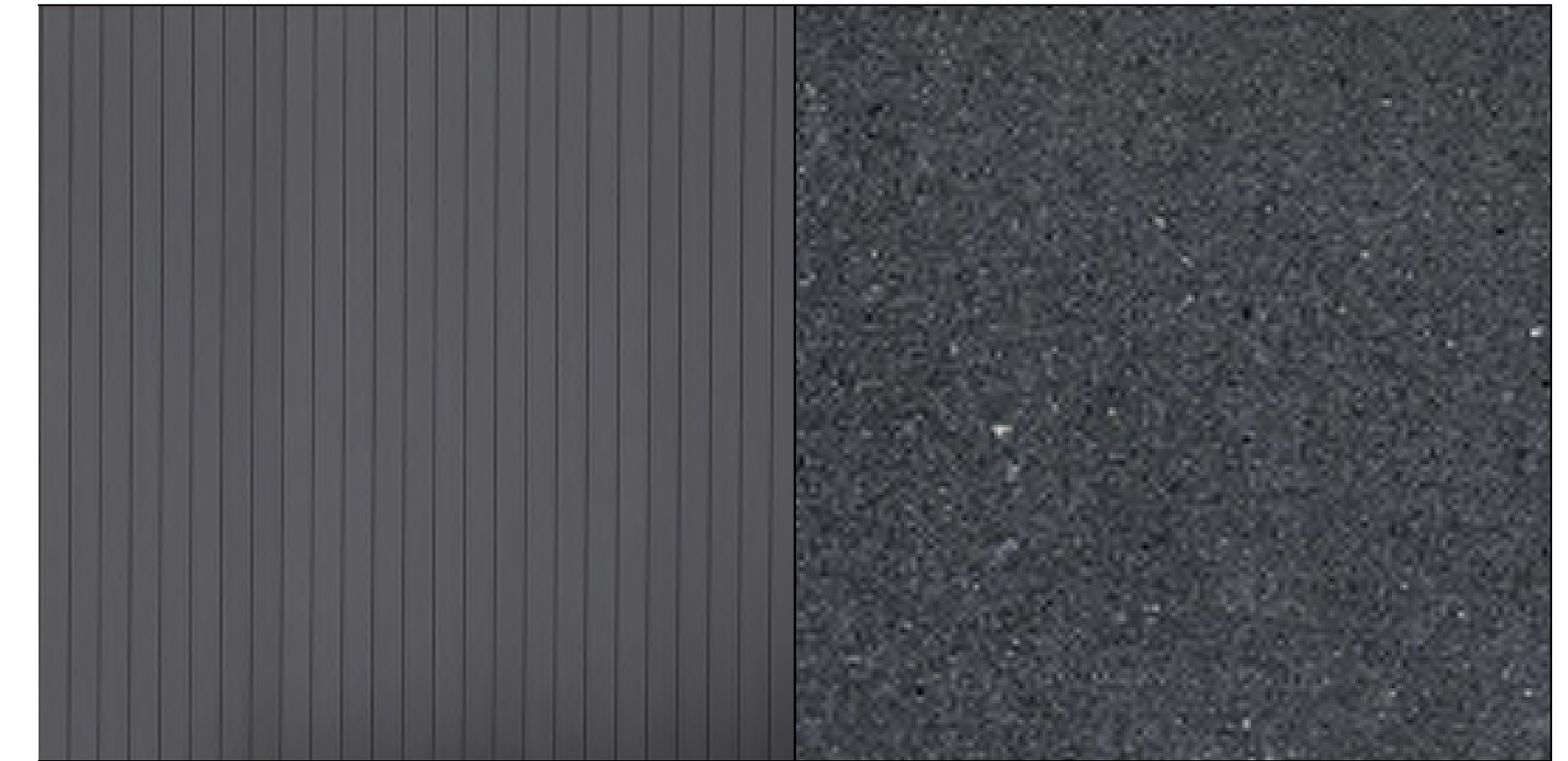
**BUILDING PERSPECTIVE**

DPD SUBMITTAL | KAHLER SLATER | COPYRIGHT 2023 | ALL RIGHTS RESERVED | 02.22.23



1: VISION AND SPANDREL GLASS  
B.O.D. GUARDIAN SNR 43

10: MASONRY SCREEN WALL  
B.O.D. COUNTY MATERIALS PREMIER ULTRA BURNISHED MASONRY UNIT



2: METAL PANEL  
B.O.D. LONGBOARD (CHARCOAL)

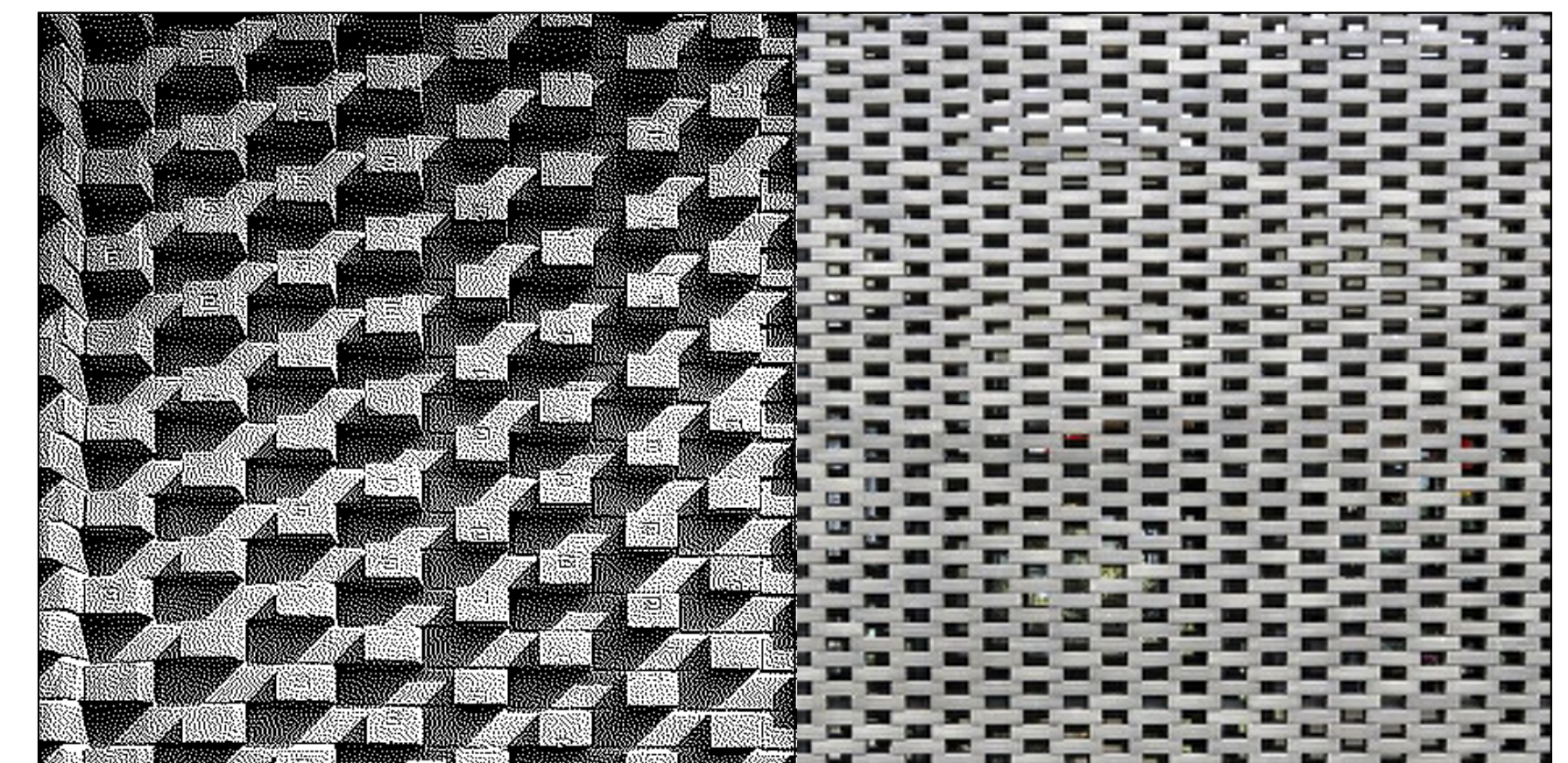
3: MASONRY BASE @ GRADE  
B.O.D. EDWARDS CAST STONE (CUSTOM COLOR)



4: MODULAR BRICK  
B.O.D. BELDEN (SALT CREEK GLAZE)

5: METAL PANEL  
B.O.D. LONGBOARD (DARK FIR)

6: FACADE LIGHTING  
SEE LIGHTING SUBMITTAL



7: BRICK FEATURE, FLOORS 3 - 10

8: BRICK SCREEN, FLOORS 1 + 2

**A44**

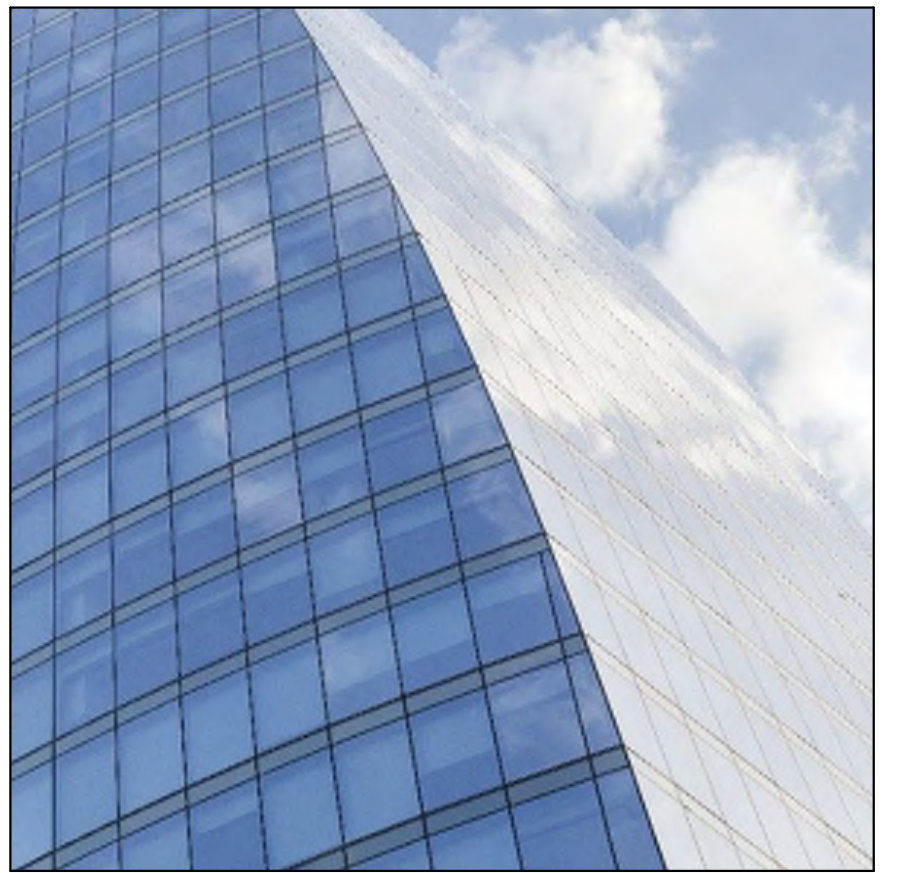
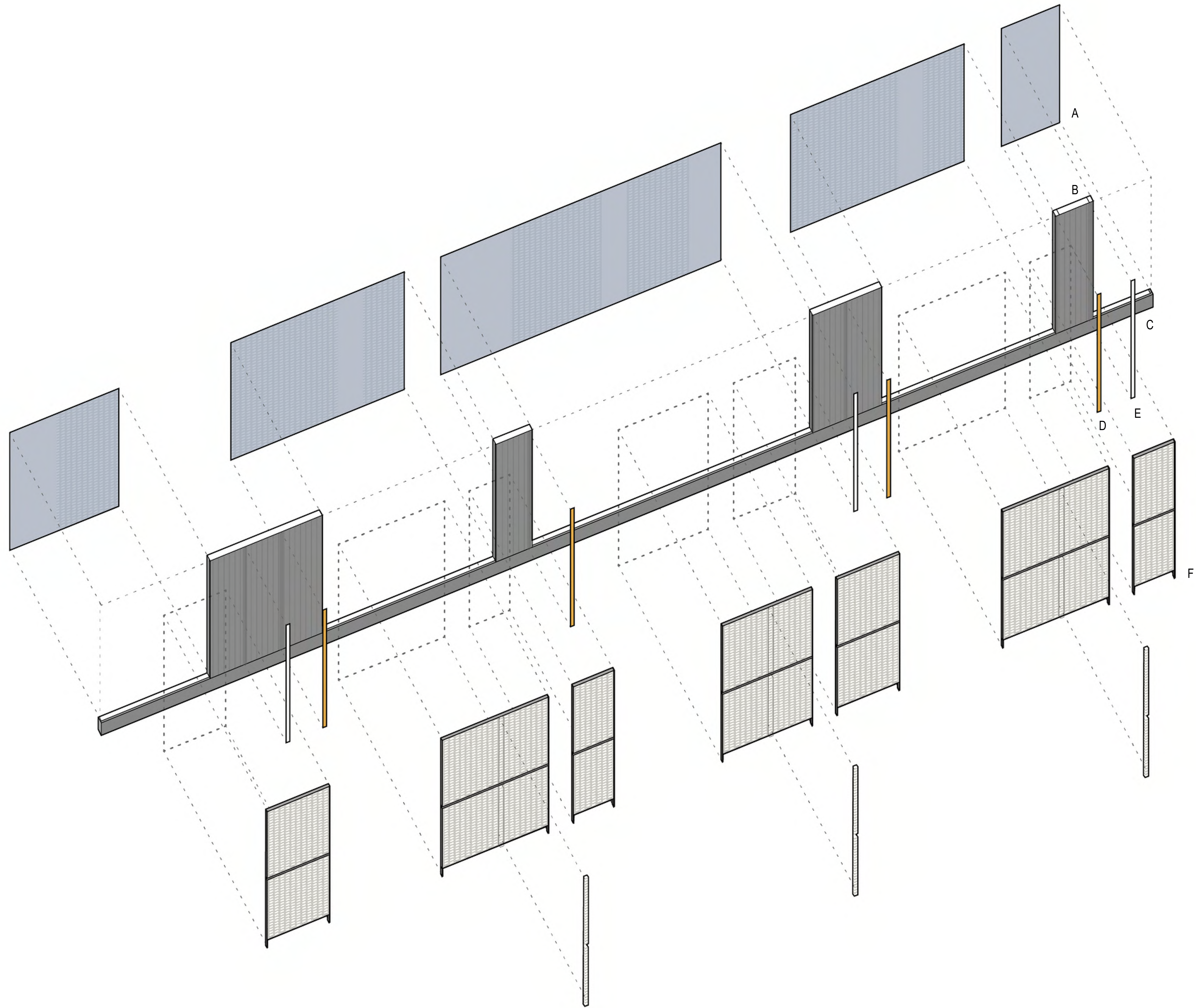
**BUILDING MATERIALS**



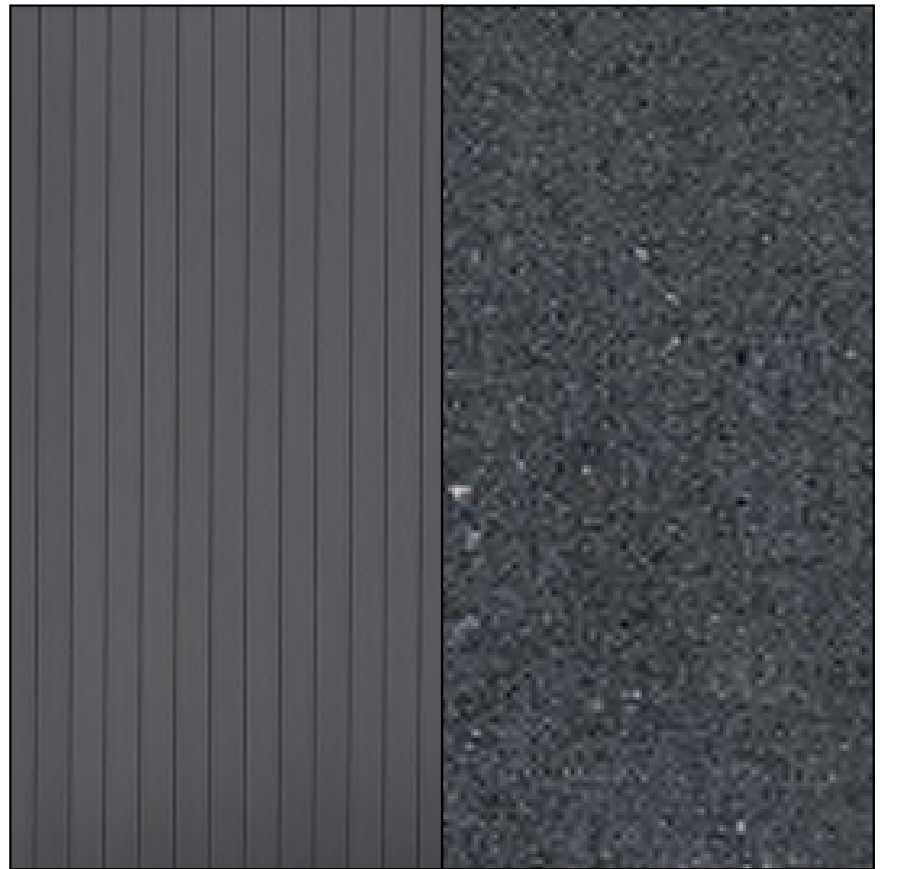




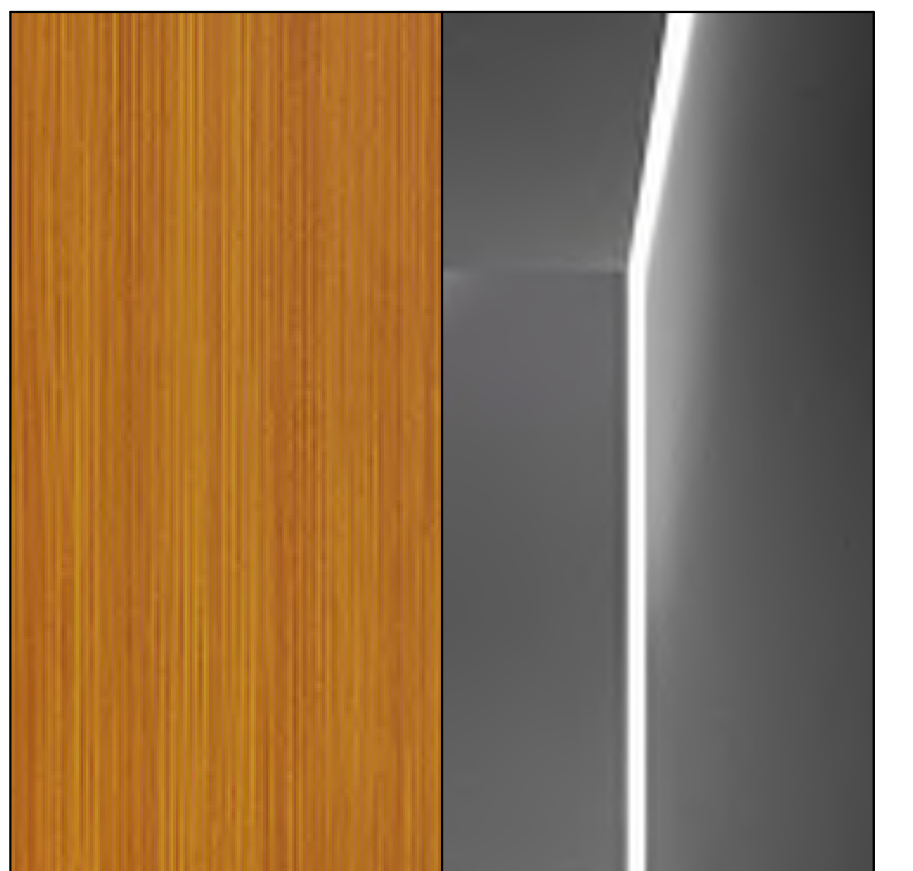
Kahler Slater



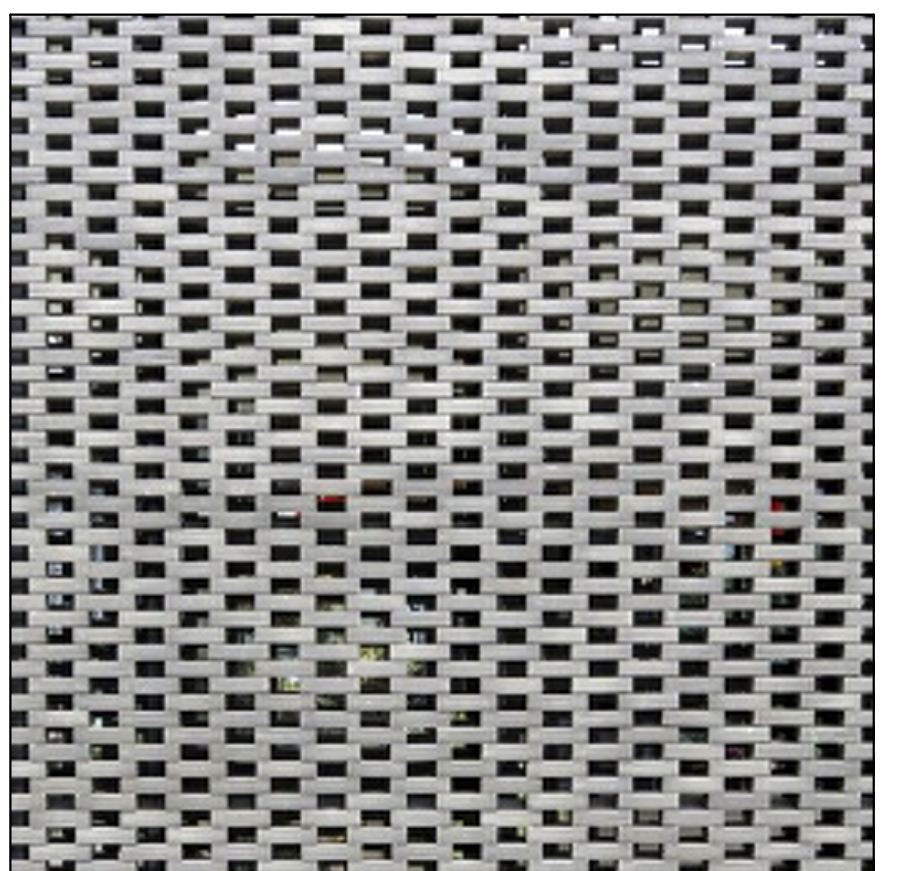
A: VISION GLASS



B: METAL PANEL C: MASONRY BASE



D: METAL PANEL E: FACADE LIGHTING



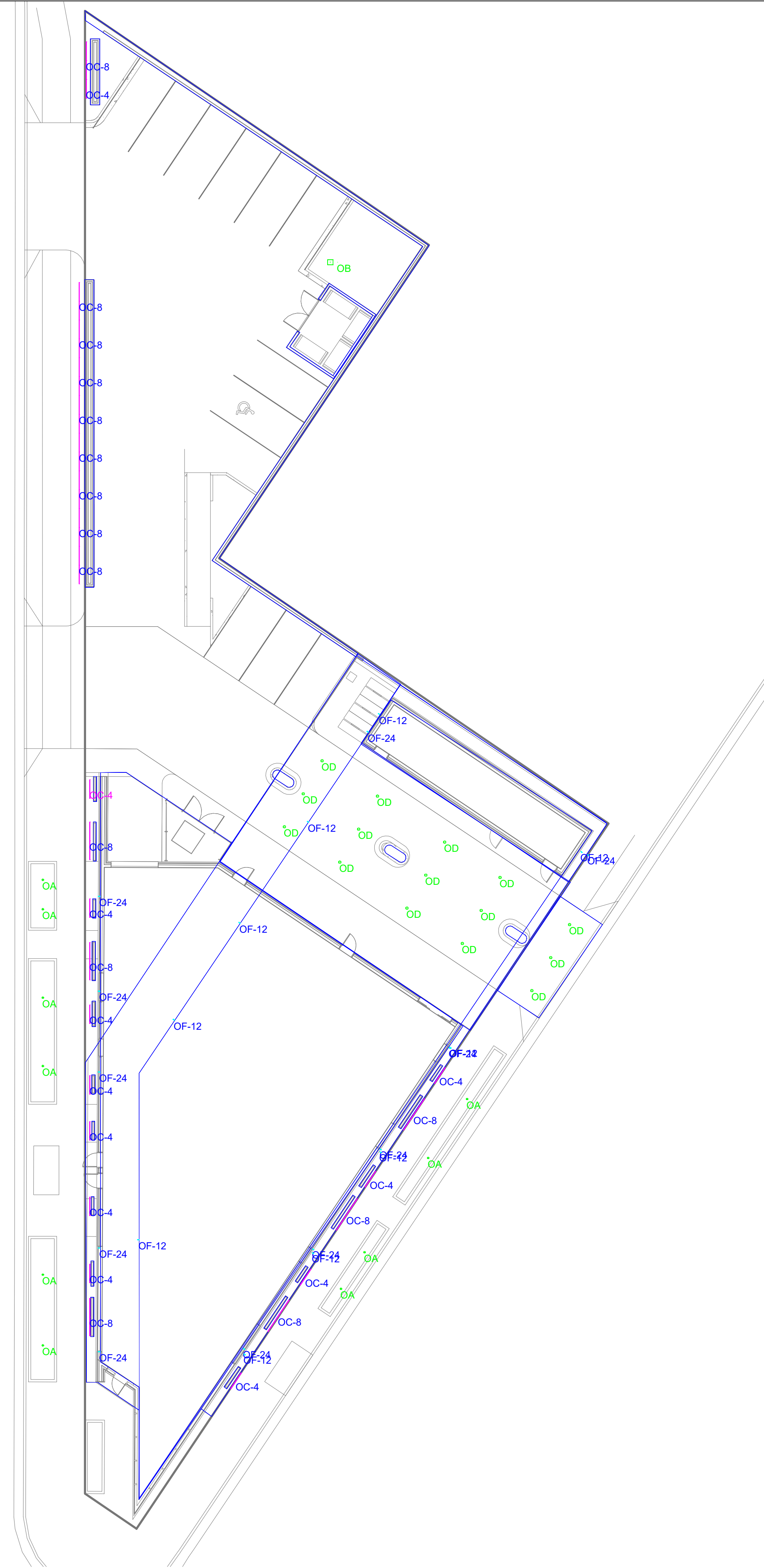
F: BRICK SCREEN, FLOORS 1 + 2

**A47**

**BRICK SCREEN AXONOMETRIC**

Luminaire Schedule								
Label	Qty	Arrangement	LLF	Tag	Description	Lum. Watts	Total Watts	Lum. Lumens
OA	10	SINGLE	0.950	TARGETTI	KPLM41HEMFL2xx	13.5	135	1420
OB	1	SINGLE	0.950	LITHONIA	DSX1 LED P2 xxK 80CRI T4M HS	67.7927	67.7927	7820
OC-4	12	SINGLE	0.950	LUMENPULSE	LOI HO-120-12-xxK-8x8-TS0-XX-XX-XX	5	60	316
OC-8	15	GROUP	0.950	LUMENPULSE	LOI HO-120-12-xxK-8x8-TS0-XX-XX-XX	N.A.	150	N.A.
OD	15	SINGLE	0.950	GOTHAM	EVO6 xx_20 AR MD LSS	19.7	295.5	1995
OF-12	10	GROUP	0.950	DADO LTG	EHL40-X-1-W-R-S-X-X-X	N.A.	150	N.A.
OF-24	11	GROUP	0.950	DADO LTG	OL40-8E-xx-1-PCW-R-288-XXX-XXX	N.A.	330	N.A.

Calculation Summary							
Label	CalcType	Units	Avg	Max	Min	Avg/Min	Max/Min
SITE	Illuminance	Fc	0.46	15.62	0.00	N.A.	N.A.



COMMENTS

DATE

#

REVISIONS

DRAWN BY : LB

DATE : FEB 06, 2023

SCALE : 1/16" = 1'-0"

BRADY STREET HOTEL

MILWAUKEE, WISCONSIN

SHEET NUMBER:

SITE LIGHTING PLAN

ES101



COMMENTS

DATE

#

REVISIONS

DRAWN BY : LB

DATE : FEB 06, 2023

SCALE : 1/16" = 1'-0"

BRADY STREET HOTEL

MILWAUKEE, WISCONSIN

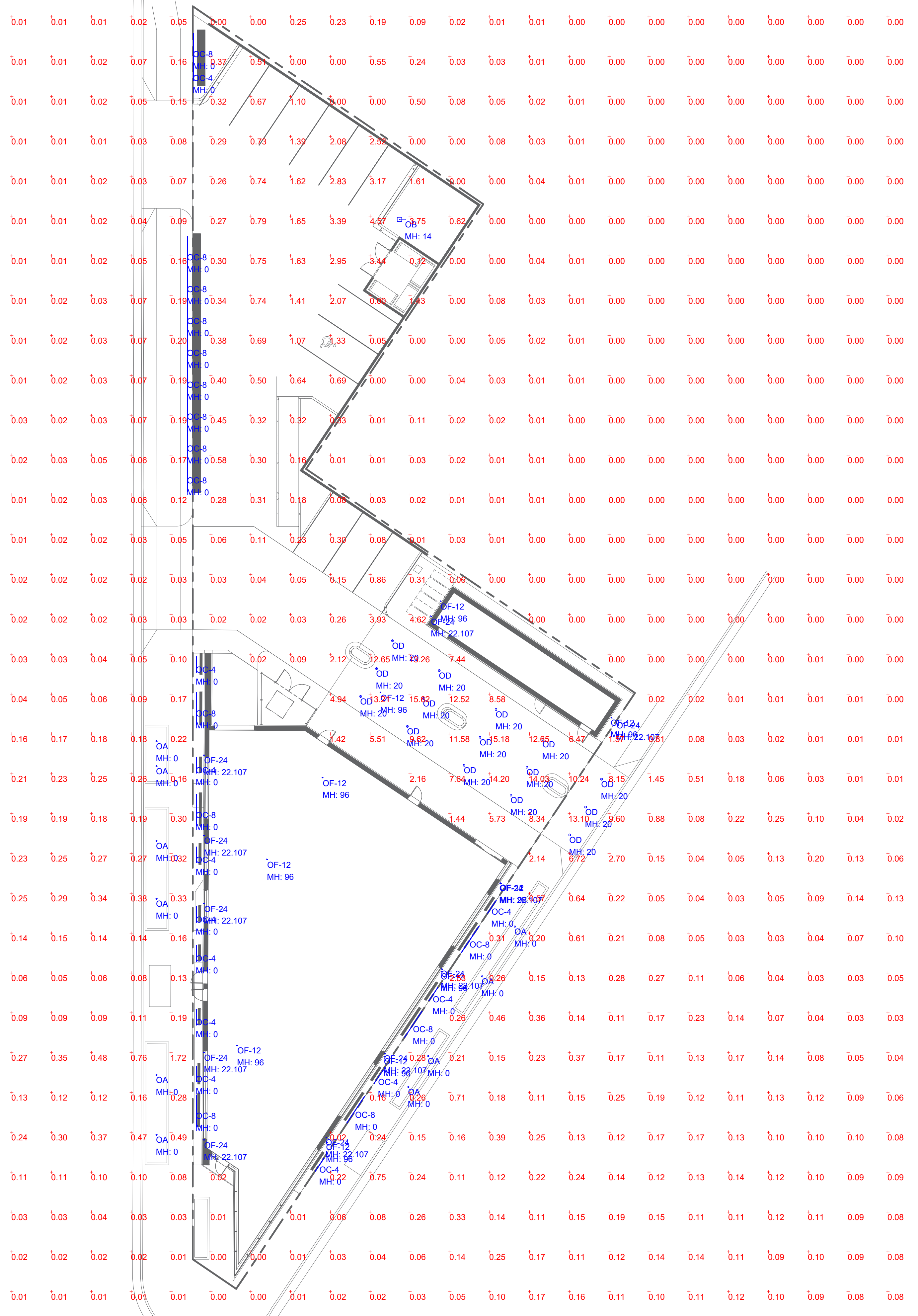
SITE LIGHTING  
PHOTOMETRIC

ES102

SHEET NUMBER:

Luminaire Schedule								
Label	Qty	Arrangement	LLF	Tag	Description	Lum. Watts	Total Watts	Lum. Lumens
OA	10	SINGLE	0.950	TARGETTI	KPLM41HEMFL2xx	13.5	135	1420
OB	1	SINGLE	0.950	LITHONIA	DSX1 LED P2 xxK 80CRI T4M HS	67.7927	67.7927	7820
OC-4	12	SINGLE	0.950	LUMENPULSE	LOI HO-120-12-xxK-8x8-TS0-XX-XX-XX	5	60	316
OC-8	15	GROUP	0.950	LUMENPULSE	LOI HO-120-12-xxK-8x8-TS0-XX-XX-XX	N.A.	150	N.A.
OD	15	SINGLE	0.950	GOTHAM	EVO6 xx_20 AR MD LSS	19.7	295.5	1995
OF-12	10	GROUP	0.950	DADO LTG	HL40-1ML-x-x-w-r-x	N.A.	150	N.A.
OF-24	11	GROUP	0.950	DADO LTG	HL40-1ML-x-x-w-r-x	N.A.	330	N.A.

Calculation Summary								
Label	CalcType	Units	Avg	Max	Min	Avg/Min	Max/Min	
SITE	Illuminance	Fc	0.46	15.62	0.00	N.A.	N.A.	







General Illumination Round Downlight 6"

- Feature Set**
- Bounding Ray™ optical design
  - Unibred optics mechanically attach the light engine to the lower reflector for complete optical alignment.
  - 45° cutoff to source and source image
  - Fully serviceable and upgradeable lensed LED light engine
  - 70% lumen maintenance at 60,000 hours
  - 2.5 MacAdam Ellipse; 85 CRI typical, 90+ CRI optional
  - Features are wet location, covered ceiling
- Distribution**
- Available with 10% dimming, 1% dimming, or dim to dark
- Bathing distribution with feathered edges provides even illumination on horizontal and vertical surfaces
- ENERGY STAR® certified product
- UGR of zero for fixtures aimed at nadir with a cut-off equal to or less than 60deg per CIE 117-1995 Discomfort Glare in Interior Lighting. UGR: 0



**Superior Performance**

Nominal Lumens	250	500	750	1000	1500	2000	2500	3000	3500	4000	4500	5000	6000	8000	10,000	12,000	15,000	17,500
Delivered Lumens	297	519	776	994	1471	2006	2537	3077	3542	4027	4533	5256	6371	8247	10637	13332	15776	17801
Wattage	3.4	6.2	8.2	9.6	14.7	19.7	24.7	29.5	33.8	39.0	47.3	48.7	57.6	74.9	97.1	115.0	150.5	175.3
Lumens per Watt	87.4	83.7	94.6	103.5	100.1	101.8	102.7	104.3	104.8	103.3	95.8	107.9	110.6	110.1	105.5	107.2	104.5	105.5

\*Based on 3500K AR 150 MMD 80CRI



EVO6-OPEN page 1 of 9 | gotham ARCHITECTURAL DOWNLIGHTING | 1400 Luster Road, Cary, NC 27513 | P: 800-705-SEEN (7376) | i@getlighting.com  
© 2014-2022 Acuity Brands Lighting Inc. All Rights Reserved. Rev. 11/09/22 Specifications subject to change without notice.

gotham | E v o General Illumination Round Downlight 6"

**EXAMPLE: EVO6 35/150 AR MWD LSS MVOLT E21**

Series	Color Temperature	Nominal Lumen Values	Reflector & Flange Color	Trim Style	Finish
EVO6	27/ 2700 K	82 250 lumens 85 500 lumens 87 750 lumens 40/ 4000 K 40/ 5000 K	AR Clear PR Pewter WTR Wheat GR Gold WR White BR Black WARM* White Anti-microbial TRALTB0†RAL paint for pricing only TCP† Custom paint color	FL Self-flanged FL Flat LS Semi-specular LS Diffuse LS Specular	

**Distribution**

VND	Very Narrow (0.5 s/m)	MD	Medium (0.5 s/m)	MWD	Medium Wide (1.0 s/m)	WD	Wide (1.2 s/m)
	120	217	347†	421	547†	677	807

**Driver\***

GVLT	0-10V driver dims to 10%	E21	0-10V driver dims to 1%	E21	0-10V SOLODriver. Linear dimming to 1% min.	E2B	0-10V SOLODriver. Logarithmic dimming to <1%.	E2AB	0-10V SOLODriver DALI. Logarithmic dimming to <1%.	E2AB	0-10V SOLODriver DALI with ROM (remote device management). Square Law dimming to <1%. Includes termination resistor. Refer to DMXR Manual. Minimum 1000 lumens/Maximum 35000 lumens.
ECDD†	Lutron Ecosystem digital Hi-Lume 1% soft-on, fade to black. Max 4000LM.										

**Control Interface**

Emergency Options	Options				
NL†	nLight™ dimming pack controls	EL†	Emergency battery pack, 10W, with integral test switch	SF	Single fuse. Specify 120V or 277V.
NL2B†	nLight™ dimming pack controls emergency circuit.	ELP†	Emergency battery pack, 10W, with remote test switch	TRW†	White painted flange
NL2A2†	nLight™ ARI enabled emergency	ELSP†	Emergency battery pack, 10W, with self-diagnostics, integral test switch	TRB†	Black painted flange
NL2A2E†	nLight™ ARI Dimming Pack Wireless Controls. Controls features on emergency circuit with battery pack.	ELW†	Emergency battery pack, 10W, with self-diagnostics, remote test switch	FRALTB†	Flange ring only RAL color for pricing only
		E10WCP†	Emergency battery pack, 10W Constant Power. CA Title 20 compliant with integrated test switch	FCPC	Flange custom paint color
		E10WCPA†	Emergency battery pack, 10W Constant Power. CA Title 20 compliant with remote test switch	NBB†	nLight™ Lumen Compensation
		B6TD	Bottom generator transfer device. Specify 120V or 277V.	STD	generator transfer device. Specify 120V or 277V
				SCRI†	High CRI (90+)
				CP†	Chicago Plenum. Specify 120V or 277V for 5000lm and above.
				HAB†	HAB High Ambient Option (40°C)
				RAL†	80°C endy luminaire connectors enable a simple and consistent factory installed option across all ABL Luminaire brands. Available only with RRA, RRAE, RRAEC, and RRAEC125. Refer to RAL spec sheet on www.acuitybrands.com for RELOC™ product specifications. Above ceiling access required.

**ACCESSORIES – order as separate catalog numbers (shipped separately)**

SC4B Sloped ceiling adapter. Degree of slope must be specified (50, 100, 150, 200, 250, 300). Ex. SC4B-100. Refer to TECH-130.

ET4-8YK 4"-8" Aperture ceiling thickness adapter. For use with 8,000LM lumens mounting frame to accommodate ceiling thickness up to 5".

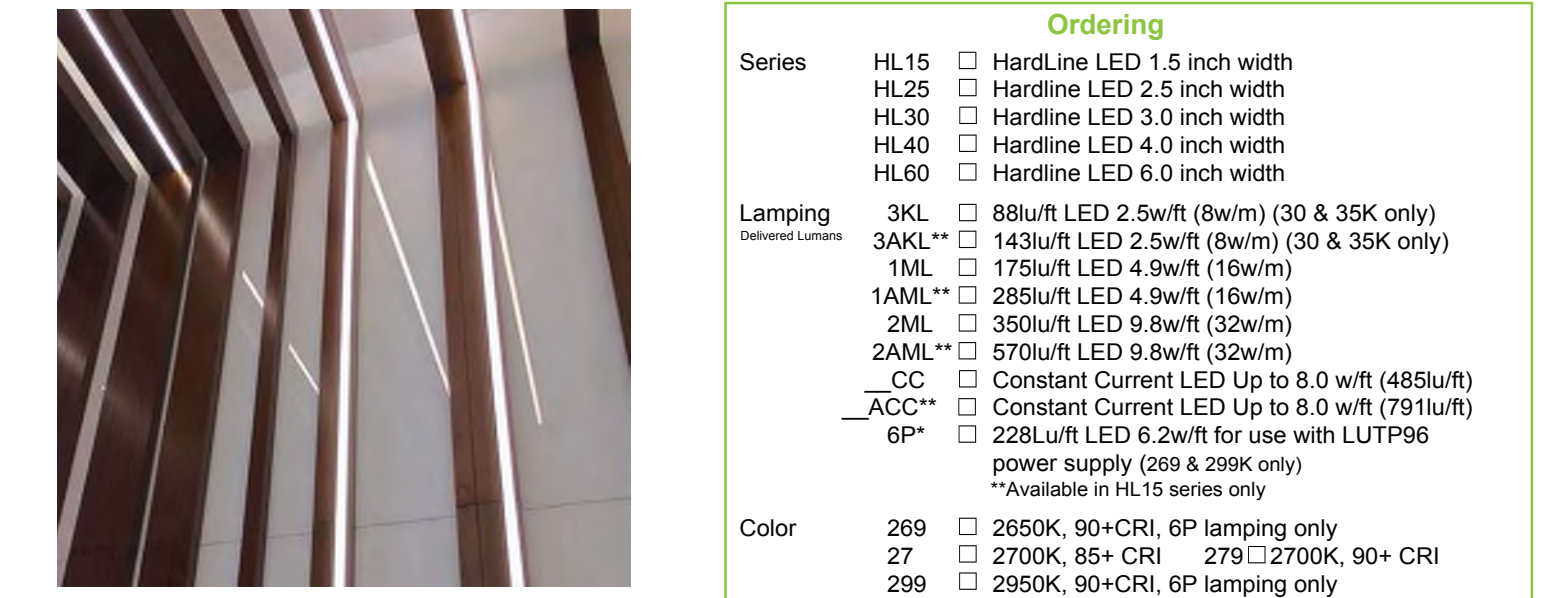
ET4-8YK 4"-8" Aperture ceiling thickness adapter for use with EDXB or CP up to 8,000LM, or rInate options (extends mounting frame to accommodate ceiling thickness up to 5"). For use with CWN/DWN trim, EDXB, CP or rInate options.

ISD-BC 0-10V wallbox dimmer. Refer to ISD-BC.

- ORDERING NOTES**
- Not available with finish.
  - Replace with applicable RAL number and finish when ready to order. See RAL 8002.
  - CSLSE for available color options. Not available with emergency battery pack options.
  - Not available with emergency battery pack options.
  - Supplied with factory installed stop down transformer.
  - Refer to TECH-130 for connector options.
  - Not available with nLight™.
  - Specify voltage.
  - For use with different reflector finish only (i.e. AR, PR, WTR, GR options). Not applicable with BR (black reflector) or FL (flangeless) option.
  - For use with generator supply power. Will require an emergency hot lead and normal hot lead.
  - Fixture begins at 80% light level. Must be specified with NL† or NL2B†.
  - 12,000LM max with EL† or nLight™ options, 5,000LM max with Lutron drivers combined with EL†. Not available with ELR, H40, or DAB, or any lighter ARI dimming options.
  - Only available 5000LM - 15,000LM with 0-10V driver.
  - Not available DALI or DMX drivers. Not available with CP or NBD options. Not recommended for metal ceiling installations.
  - When combined with the E21, E21B, or E2B option, normal luminaires (non-emergency) can be used as a normal power sensing device for nearby light ARI drivers and luminaires with EM emergency options.

EVO6-OPEN page 2 of 9 | gotham ARCHITECTURAL DOWNLIGHTING | 1400 Luster Road, Cary, NC 27513 | P: 800-705-SEEN (7376) | i@getlighting.com  
© 2014-2022 Acuity Brands Lighting Inc. All Rights Reserved. Rev. 11/09/22 Specifications subject to change without notice.

dado HardLineLED x1-3/4" Type: 0F12



Shallow lines of light mount on or within hard surfaces, e.g. metal, stone, wood, tile or glass

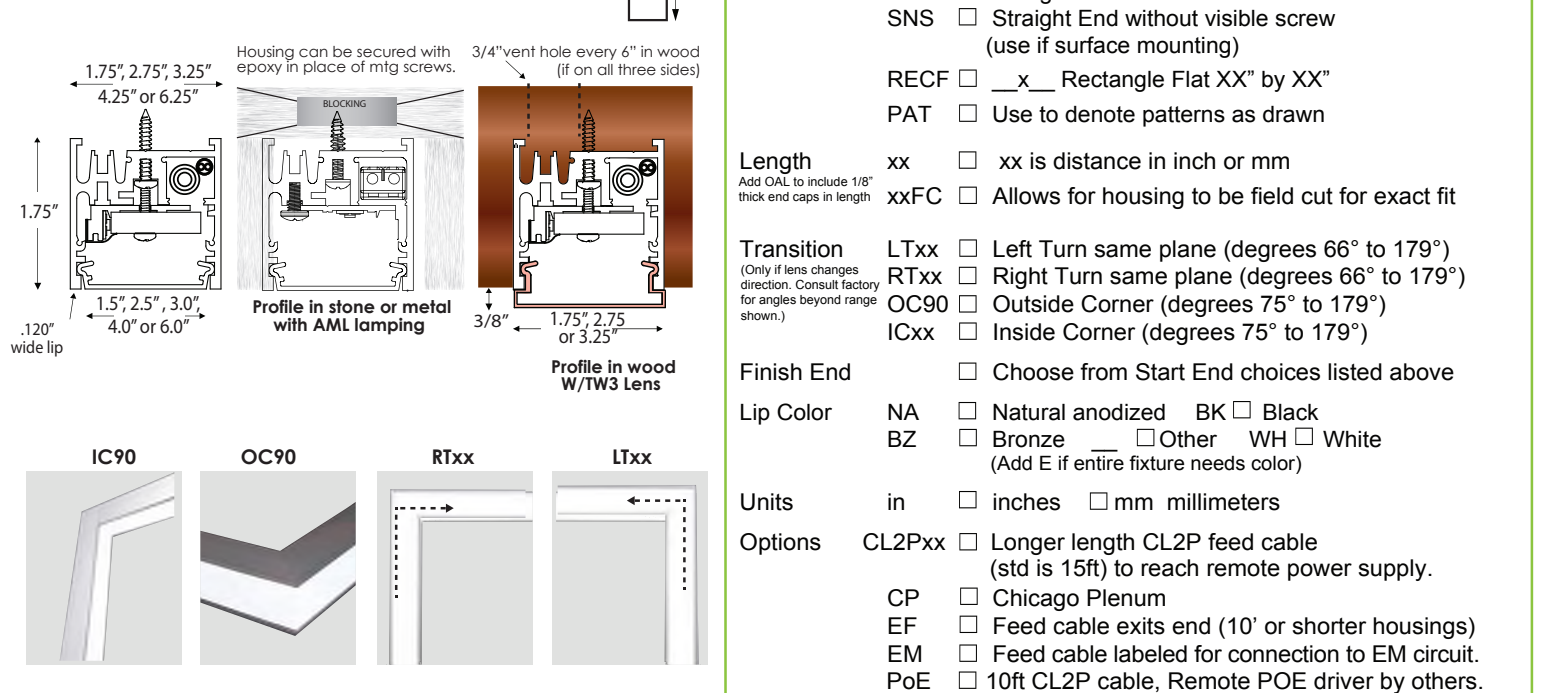
Order in any length or field cut for precise fit

1.75" depth meets ADA when surface mounted

Optional tall lens extends over lips (see pg 3)

Socket shadow free illumination

Illuminated corners: Inside, Outside, Left or Right



**Environmental Data**

For 3KL & 3AKL lamping at 3000K: W: 2.5W/ft (8W/m) LLD: 50,000hrs @ 70%lm 40H (12M) on one 100w driver

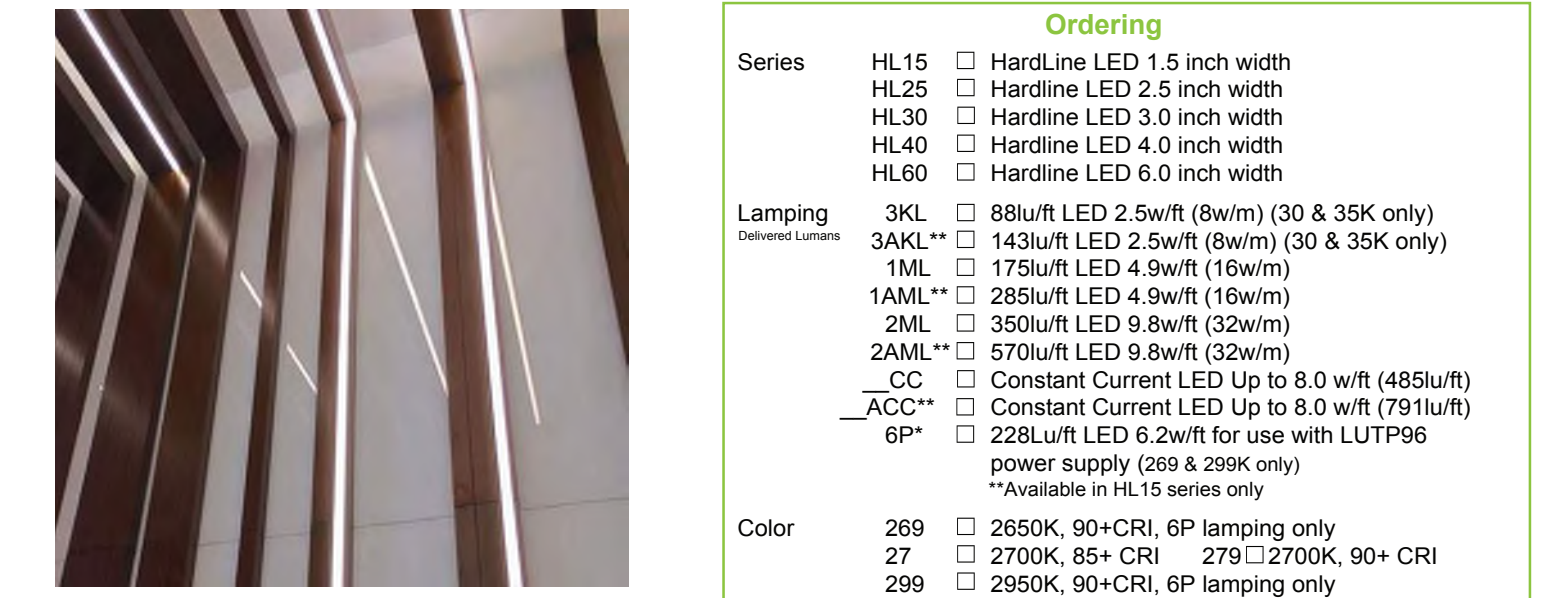
For 1ML & 1AML lamping at 3000K: W: 4.9W/ft (16W/m) LLD: 50,000hrs @ 70%lm 20H (6M) on one 100w driver

For 2ML & 2AML lamping at 3000K: W: 9.8W/ft (32W/m) LLD: 50,000hrs @ 70%lm 10H (3M) on one 100w driver

Temp range: 0° - 90°F (-20 - 30°C) No Mercury, No UV, No Flicker Warranty: 5 years cETLus Damp Listed IC Rofed Contact factory for construction details to install in environments with ambient temperatures above 90°F for more than 5 hours.

Specifications and dimensions subject to change without notice. Protected under U.S. Pat. 8109197 and other patents pending. info@dadodesigning.com v1#877.323.4584

dado HardLineLED x1-3/4" Type: 0F24



Shallow lines of light mount on or within hard surfaces, e.g. metal, stone, wood, tile or glass

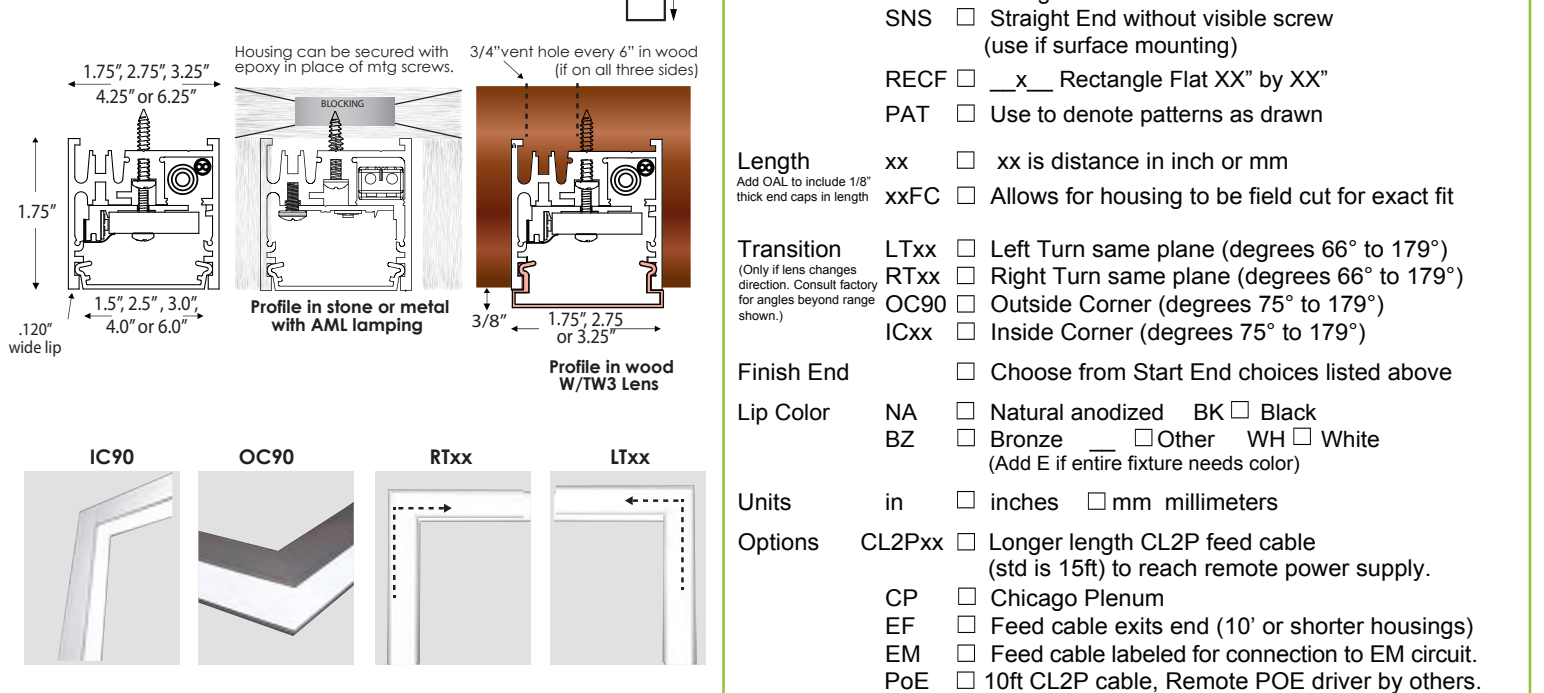
Order in any length or field cut for precise fit

1.75" depth meets ADA when surface mounted

Optional tall lens extends over lips (see pg 3)

Socket shadow free illumination

Illuminated corners: Inside, Outside, Left or Right



**Environmental Data**

For 3KL & 3AKL lamping at 3000K: W: 2.5W/ft (8W/m) LLD: 50,000hrs @ 70%lm 40H (12M) on one 100w driver

For 1ML & 1AML lamping at 3000K: W: 4.9W/ft (16W/m) LLD: 50,000hrs @ 70%lm 20H (6M) on one 100w driver

For 2ML & 2AML lamping at 3000K: W: 9.8W/ft (32W/m) LLD: 50,000hrs @ 70%lm 10H (3M) on one 100w driver

Temp range: 0° - 90°F (-20 - 30°C) No Mercury, No UV, No Flicker Warranty: 5 years cETLus Damp Listed IC Rofed Contact factory for construction details to install in environments with ambient temperatures above 90°F for more than 5 hours.

Specifications and dimensions subject to change without notice. Protected under U.S. Pat. 8109197 and other patents pending. info@dadodesigning.com v1#877.323.4584

dado HardLineLED x1-3/4" Type: 0F12

**BALLabs** Independent Test No. 17940.0

Candepower Distribution (cd)

Angle	Along	45°	Across
0°	259	259	259
5°	262	259	256
10°	256	252	251
15°	252	247	246
20°	240	236	234
25°	230	225	225
30°	219	214	211
35°	202	199	197
40°	186	180	179
45°	166	163	162
50°	149	144	145
55°	128	124	125
60°	107	105	104
65°	85	84	82
75°	43	42	40
85°	9	7	10
90°	0	0	0

**Zonal Lumen Summary**

Zone	Lumen	% Luminance
0-30°	198	28.4%
0-40°	322	46.1%
0-60°	560	80.2%
0-90°	139	19.8%
90-180°	0	0%
0-180°	699	100%

**Luminance Data (cd/m²)**

Angle	Along	45°	Across
45°	607	595	588
55°	5713	5529	5575
65°	5128	5065	5003
75°	4288	4186	3982
85°	2729	2122	3032

**Photometric Data**

**BALLabs** Independent LM-79 Test No. 17943.0

This is an absolute test per LM-79-08  
Luminous Length: 24" Width: 1.5"

**Zonal Lumen Summary**

Zone	Lumen	% Luminance
0-30°	315	27.7%
0-40°	512	45.1%
0-60°	894	78.7%
0-90°	242	21.3%
90-180°	0	0%
0-180°	1138.0	100%

**Luminance Data (cd/m²)**

Angle	Along	45°	Across
45°	243	234	229
55°	16411	16065	15660
65°	15530	14960	14604
75°	14986	14213	13826
85°	13262	12788	12539
85°	11252	10783	11721

dado HardLineLED x1-3/4" Type: 0F24

**BALLabs** Independent Test No. 17940.0

Candepower Distribution (cd)

Angle	Along	45°	Across
0°	259	259	259
5°	262	259	256
10°	256	252	251
15°	252	247	246
20°	240	236	234
25°	230	225	225
30°	219	214	211
35°	202	199	197
40°	186	180	179
45°	166	163	162
50°	149	144	145
55°	128	124	125
60°	107	105	104
65°	85	84	82
75°	43	42	40
85°	9	7	10
90°	0	0	0

**Zonal Lumen Summary**

Zone	Lumen	% Luminance
0-30°	198	28.4%
0-40°	322	46.1%
0-60°	560	80.2%
0-90°	139	19.8%
90-180°	0	0%
0-180°	699	100%

**Luminance Data (cd/m²)**

Angle	Along	45°	Across
45°	607	595	588
55°	5713	5529	5575
65°	5128	5065	5003
75°	4288	4186	3982
85°	2729	2122	3032

**Photometric Data**

**BALLabs** Independent LM-79 Test No. 17943.0

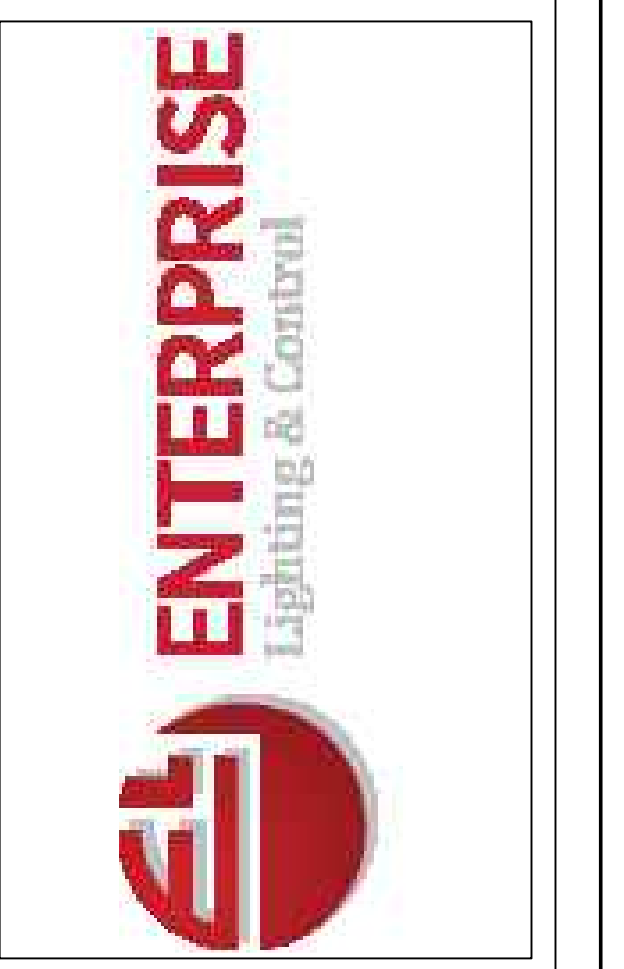
This is an absolute test per LM-79-08  
Luminous Length: 24" Width: 1.5"

**Zonal Lumen Summary**

Zone	Lumen	% Luminance
0-30°	315	27.7%
0-40°	512	45.1%
0-60°	894	78.7%
0-90°	242	21.3%
90-180°	0	0%
0-180°	1138.0	100%

**Luminance Data (cd/m²)**

Angle	Along	45°	Across
45°	243	234	229
55°	16411	16065	15660
65°	15530	14960	14604
75°	14986	14213	13826
85°	13262	12788	12539
85°	11252	10783	11721

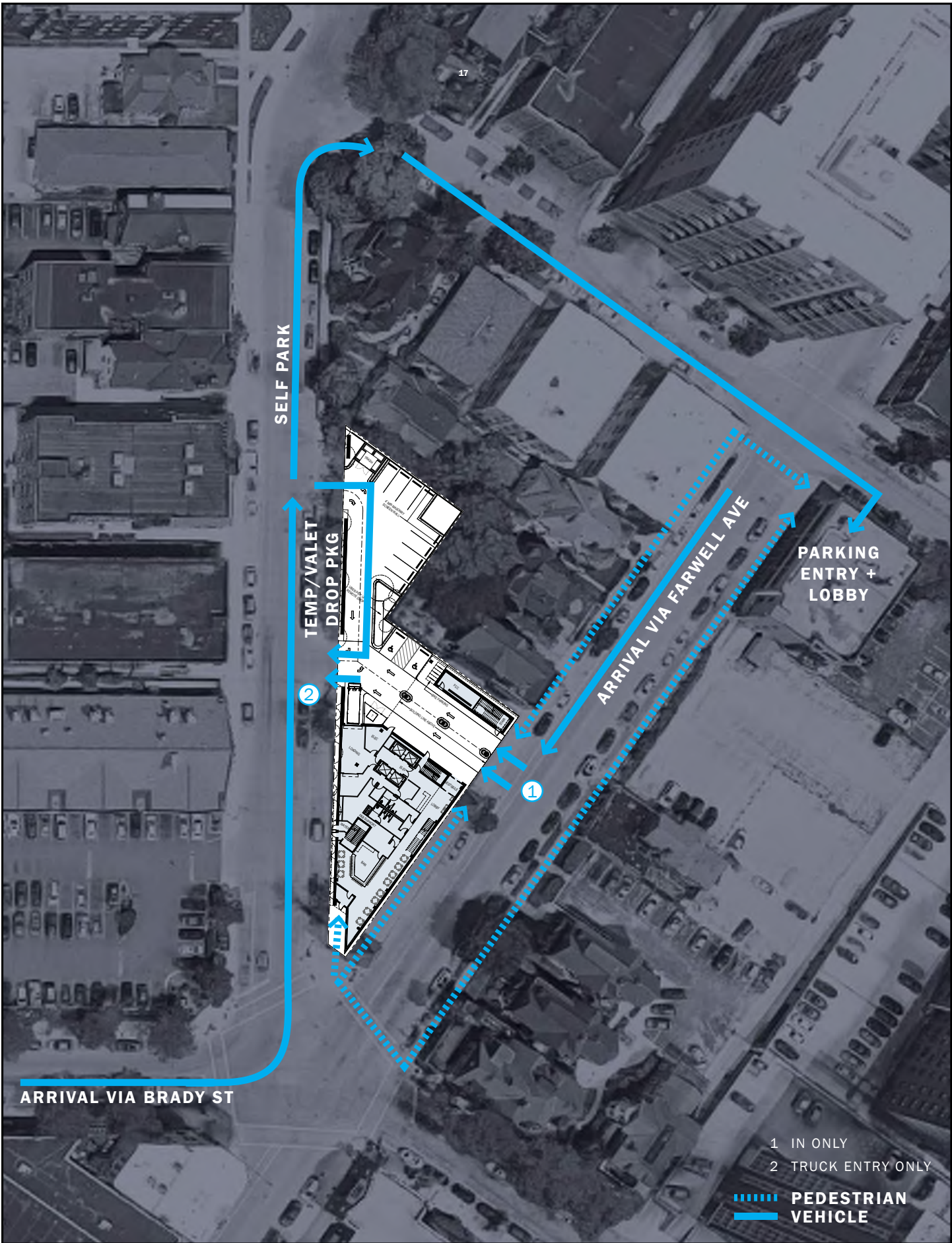


COMMENTS	DATE	#

DRAWN BY : LB  
DATE : FEB 06, 2023  
SCALE : NTS

BRADY STREET HOTEL  
MILWAUKEE, WISCONSIN  
SHEET NUMBER: ES105  
LUMINAIRE DETAILS





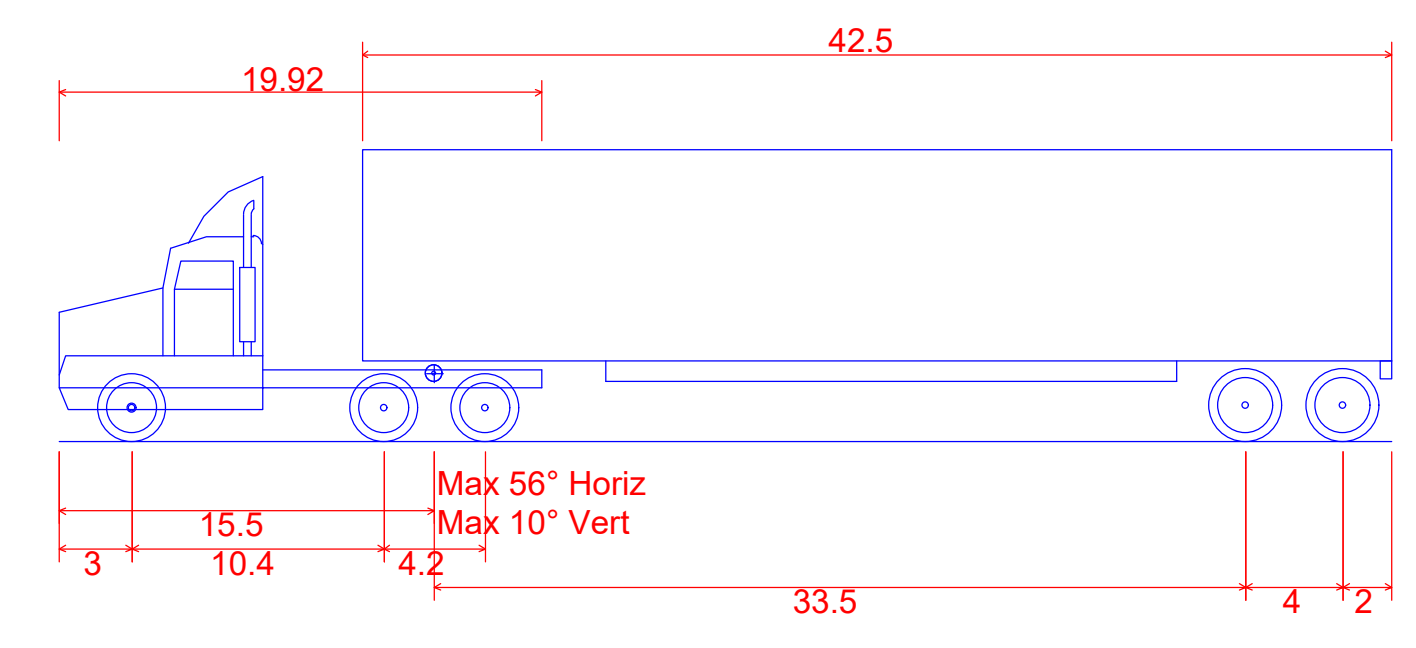
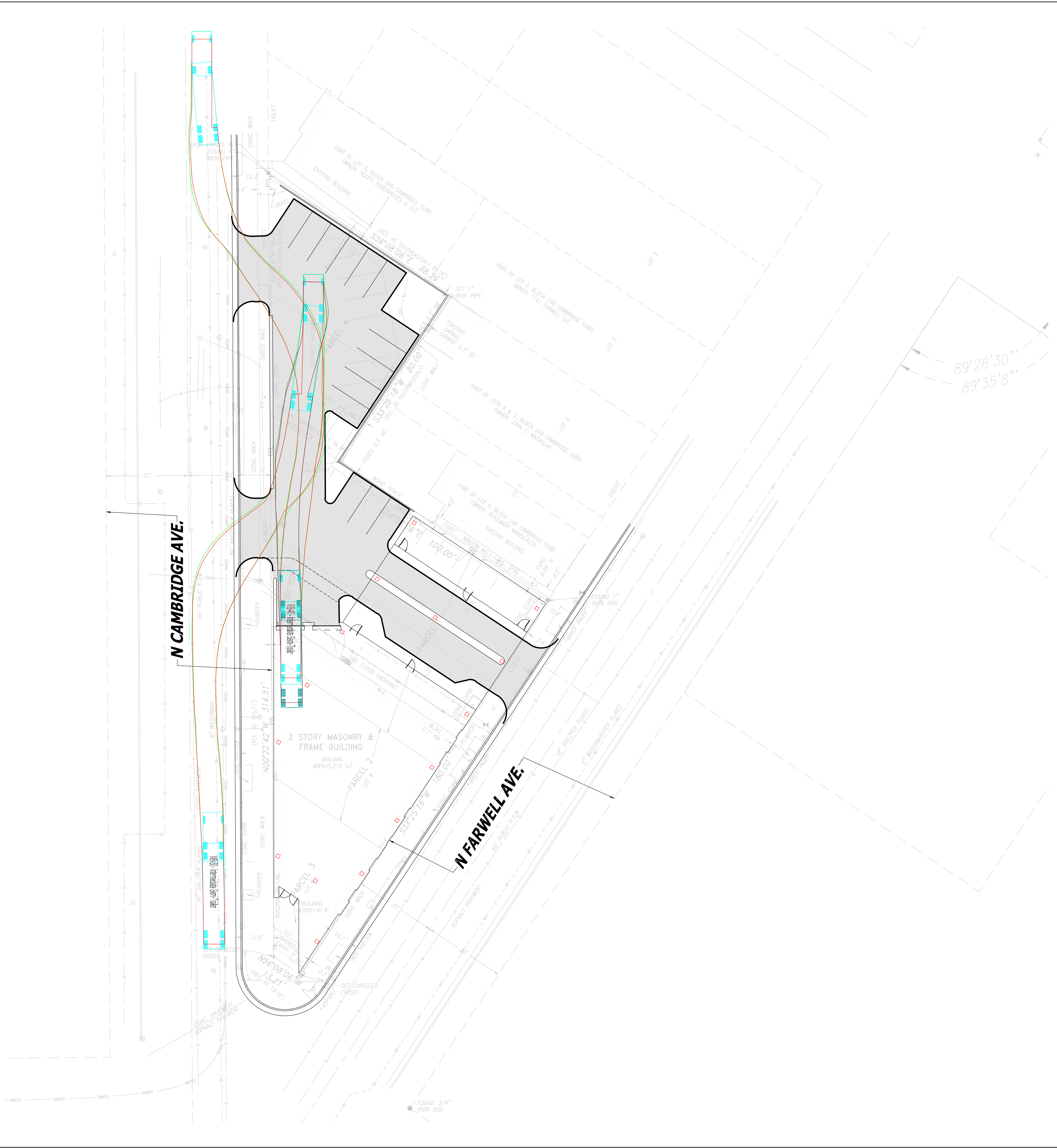
# GUEST CIRCULATION

1709 - 1723 N FARWELL AVE. DPD

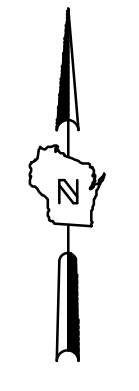
EXB.1



# VALET CIRCULATION



**WB-50 - Intermediate Semi-Trailer**  
 Overall Length 42.5  
 Overall Width 8.5  
 Overall Body Height 12.052  
 Min Body Ground Clearance 1.334  
 Max Track Width 8.5  
 Lock-to-lock time 6.00s  
 Curb to Curb Turning Radius 45.000ft



BRADY AND FARWELL AND ST JOHNS PARCEL

VEHICLE TURNING MOVEMENT

**PRELIMINARY  
 NOT FOR  
 CONSTRUCTION**

SCALE:	
PROJECT NO:	21385
DESIGN DATE:	---
PLOT DATE:	11/1/2022
DRAWN BY:	---
CHECKED BY:	---
APPROVED BY:	---
SHEET NO:	

**EXB.3**