



NIDC Healthy Neighborhoods 2015 Project Year Overview

Presented to Community & Economic Development Committee February 1, 2016

NIDC RESOURCES

- **Common Council allocated funds to NIDC for implementation of Healthy Neighborhoods CIPs and Citywide CIPs**
 - **44 projects were approved in 2015 for over \$180,000 leveraging over \$260,000**
- **Funding is available to operate the program at the same level in 2016**

A photograph of a blue-painted wooden lattice fence. The fence is made of thick wooden slats arranged in a diamond pattern. A yellow diamond-shaped sign with a blue and green design is attached to the fence. A colorful, multi-colored object, possibly a piece of fabric or a small sculpture, is hanging from the fence. The background shows green trees and a grey roof. The text "NIDC Citywide Community Improvement Projects" is overlaid on the bottom of the image in white, bold, sans-serif font.

NIDC Citywide Community Improvement Projects

CLARKE SQUARE ART IN THE ALLEYS



GROUNDWORK MILWAUKEE CLARKE STREET GARDEN



MILWAUKEE PUBLIC THEATRE BUFFALO TRAIL TOPIARY



UNITED METHODIST CHILDREN'S SERVICES WASHINGTON PARK NEIGHBORHOOD ENTRYWAY ART



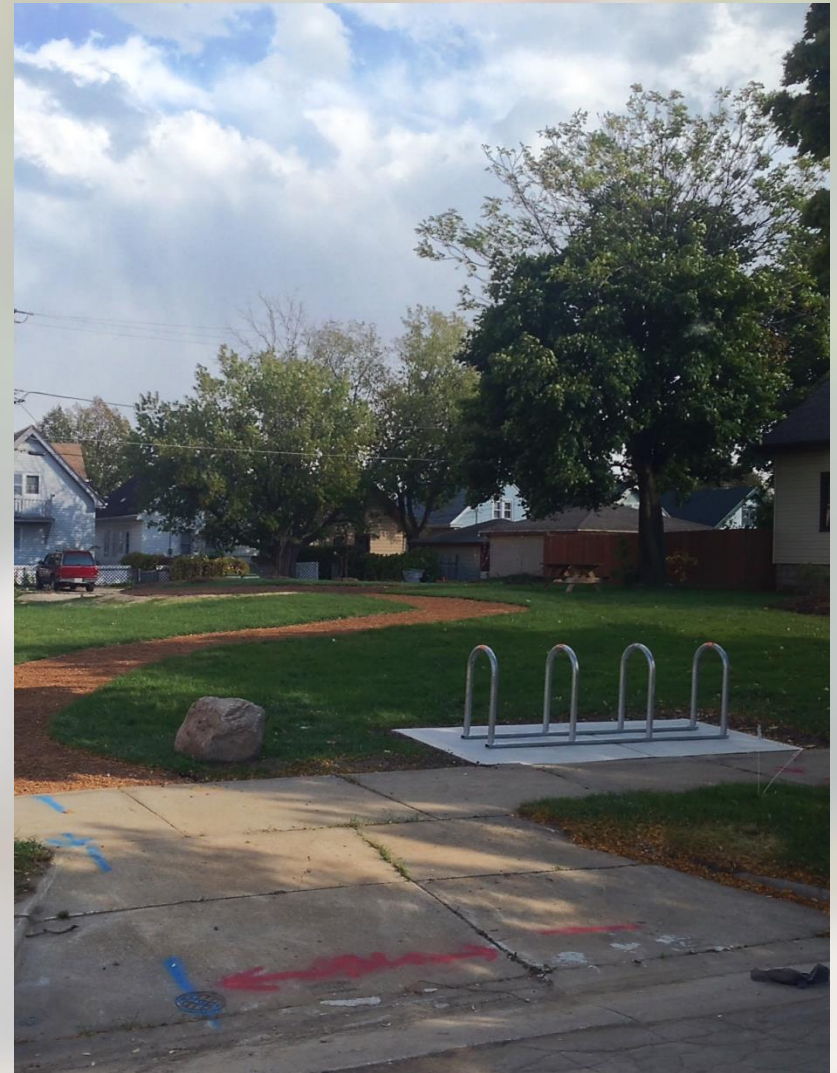
RIVERWEST WALKABLE NEIGHBORHOODS



BREWERS HILL NEIGHBORHOOD ASSOCIATION NEIGHBORHOOD GATEWAY SIGN



PARTNERS FOR PLACES MINI-PARKS



MERRILL PARK NEIGHBORHOOD ASSOCIATION COMMUNITY WATCH SIGNS



MUJERES CON PODER REDUCE, REUSE, AND RECYCLE



MARTIN DRIVE RAINWATER HARVESTING PAVILION



WASHINGTON PARK PARTNERS WASHINGTON PARK POOL ART

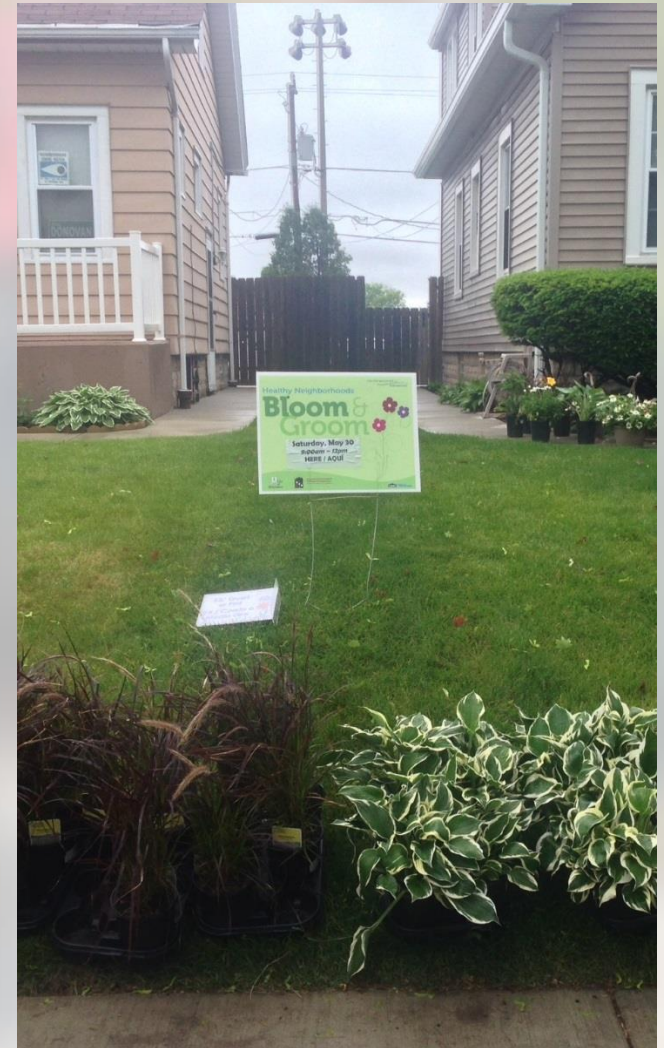




5th Annual Bloom & Groom 2015

BLOOM & GROOM 2015

- 20 neighborhood sites citywide
- Over 100 volunteers
- Over 600 participating residents



BLOOM & GROOM 2015

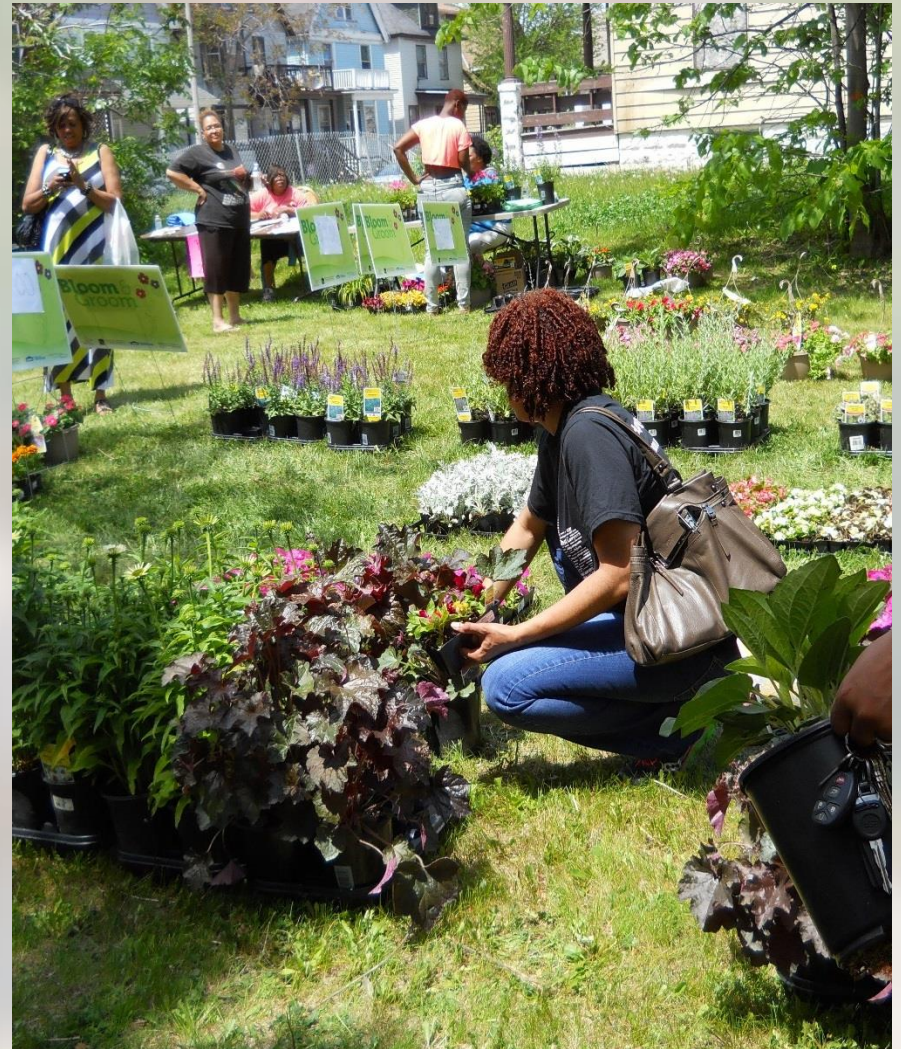


**NIDC Contribution
\$19,707**



BLOOM & GROOM 2015

Community Contribution
\$19,707



BLOOM & GROOM 2015



Lowe's Contribution
\$25,845



BLOOM & GROOM 2015

**Total Bloom & Groom
investment \$65,259**





NIDC – GM F Healthy Neighborhood Partnership

HEALTHY NEIGHBORHOODS

PARTNERSHIP NIDC & GMF

- **Since 2006 the City of Milwaukee has partnered with the Greater Milwaukee Foundation to collaboratively and strategically maximize resources of the Healthy Neighborhood Initiative**
 - **Financial & technical support (NIDC & GMF)**
 - **\$10,000 matching grant (NIDC)**
 - **Target Investment Neighborhood resources (NIDC)**
 - **Professional development & Training (GMF)**
- **In 2016 GMF will continue to operate the Healthy Neighborhood Program**



GMF HEALTHY NEIGHBORHOODS REDESIGN

2015 DESIGNATED NEIGHBORHOODS

Agape Community Center

Thurston Woods

Old North Milwaukee

Albright Methodist Church

Capitol Heights

Havenwoods Economic Development Corporation

Havenwoods

Layton Boulevard West Neighbors

Silver City

Burnham Park

Layton Park

Riverworks Development Corporation

Harambee

Riverwest

Sherman Park Community Association

Sherman Park

Sixteenth Street Community Health Center

Kinnickinnic River Neighborhoods

UW Extension Waukesha

Dunbar Oak

Tower Hill

Urban Anthropology

Lincoln Village

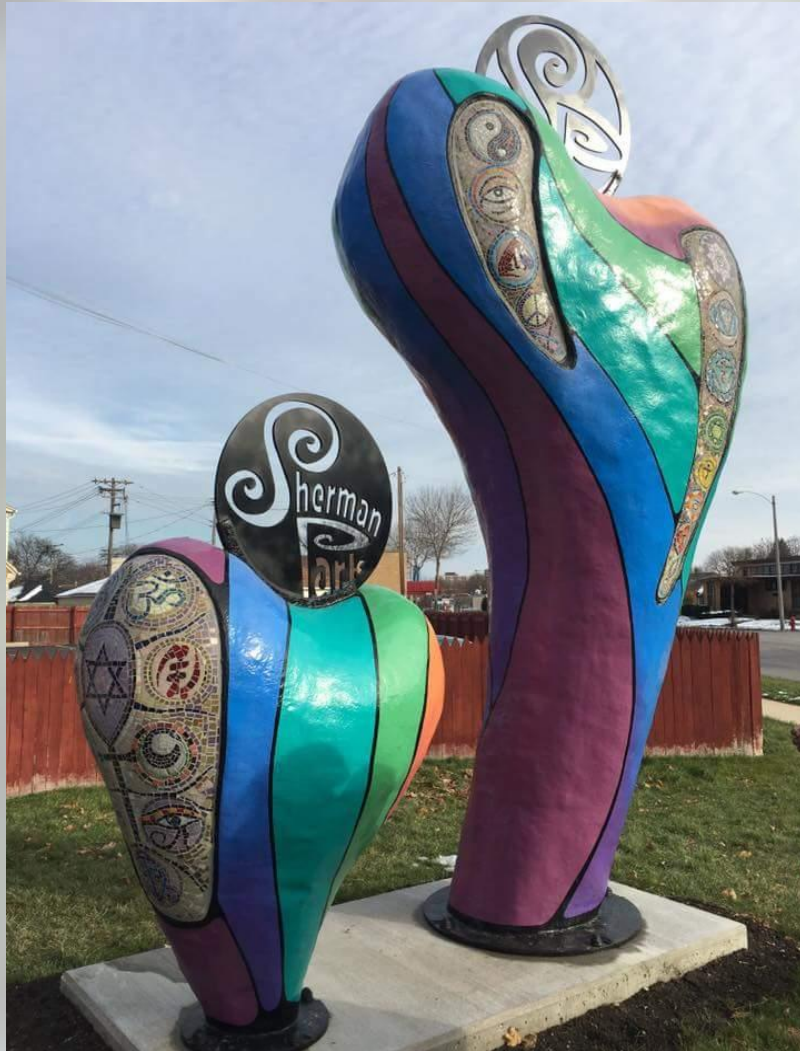
Baran Park

Polonia



2015 Healthy Neighborhood Projects

SHERMAN PARK COMMUNITY SCULPTURE



LINCOLN VILLAGE BEAUTIFUL BLOCKS V



RIVERWORKS FREE LITTLE LIBRARIES



THURSTON WOODS YELLOW CHAIR PROJECT



CAPITAL HEIGHTS CAPITAL HEIGHTS COMMUNITY CLEAN-UP



LINCOLN VILLAGE SOUTH 5TH PLACE PROJECT



HAVENWOODS ART BENCHES PROJECT



BURNHAM PARK TROWBRIDGE SQUARE SATELLITE STUDIO



RIVERWORKS SUPERHERO MURALS



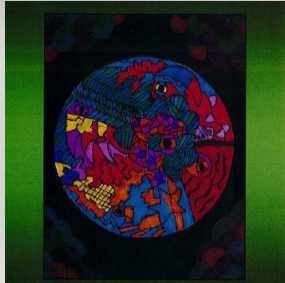
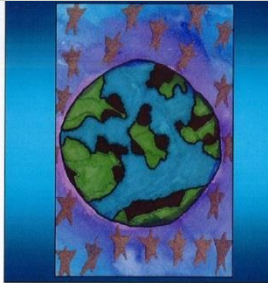
SHERMAN PARK TEMPLES OF PEACE



See What I See

In my community of my neighborhood, people in my family want changes in it. I want changes from the arguing, fighting, killing, violence, and bullying. Every time I see fighting, I feel in my heart that those two people forgive each other; they don't have to become best friends, but just become friends and stop the violence. If somebody kills a person and I am right there or anywhere in the world and I hear about it, I just feel tears in my eyes and I feel sad for person because that person just lost his/her life over someone else's actions or feelings. If they need to kill other people, maybe it's because something happened in their lives or to somebody they loved so much. Bullying is the hardest thing to deal with at school. If you get bullied over how you look, how tall you are, or what you don't have, you don't have to worry about that. Just say, "I am glad about how I look, I am glad about how tall I am, I am glad about what I do have" and then go tell a teacher if they are still bullying you.

By Truman Stroud



As Far as the Eye Could See

As far as the eye could see, the world was once a place of peace. Where we joined hands when work was done and complete. But now as far as they eye could see, there is more hate than love. Lost faith, way above what we failed to realize is what this world could be. One day, the world would have peace.

By Raven Cooper



There is a storm brewing
Brewing in the world all around me
The words of peers, I've lightning
In their tone, I hear thunder
But even as the torrents of hate crush against my vessel
There is a still small voice that crams my heart and gives shalom.

By Alegra Washington

PULASKI PARK PUBLIC ART



2015 GOALS MET

- ❑ **Continue to refine application and reporting process with optimal customer service in mind.**
 - ✓ **Ongoing review of guidelines and application**
- ❑ **Offer information sessions, twice each month, in the community to provide program information & offer technical assistance.**
 - ✓ **Information sessions were held twice each month through November**
- ❑ **Increase effective communication with Council members about CIPs in their districts.**
 - ✓ **Ongoing efforts to connect with Council members on neighborhood projects**

GOALS FOR 2016

- Identify new neighborhood partners to apply for CIP grants**
- Continue to find opportunities to collaborate with other city departments on projects**
- Assess 2015 updates to application and reporting processes for grants**

THANK YOU!

