

30 YR. RAISED PROFILE ASPHALT SHINGLES  
15# ROOF FELT  
ICE AND WATER SHIELD

5/4" X 6" CEDAR FRIEZE BOARD  
CEDAR FASCIA  
PLYWOOD SOFFITS

VINYL PANELED SHUTTERS  
HARDPLANK SIDING  
5/4" X 6" CEDAR TRIM (FRONT ONLY)  
CAPITAL DBL. HUNG VINYL WINDOWS  
(GRILLES ON FRONT ONLY)

ALUMINUM GUTTERS

16X8 DBL STEEL OVERHEAD DOOR  
1/0-3/0-1/0 6-PANEL STEEL FRONT  
ENTRY DOOR UNIT W/12" TRANSOM

4X4 GR. TR. POSTS WRAPPED  
IN 1X8 CEDAR

CONTINUOUS RIDGE VENT



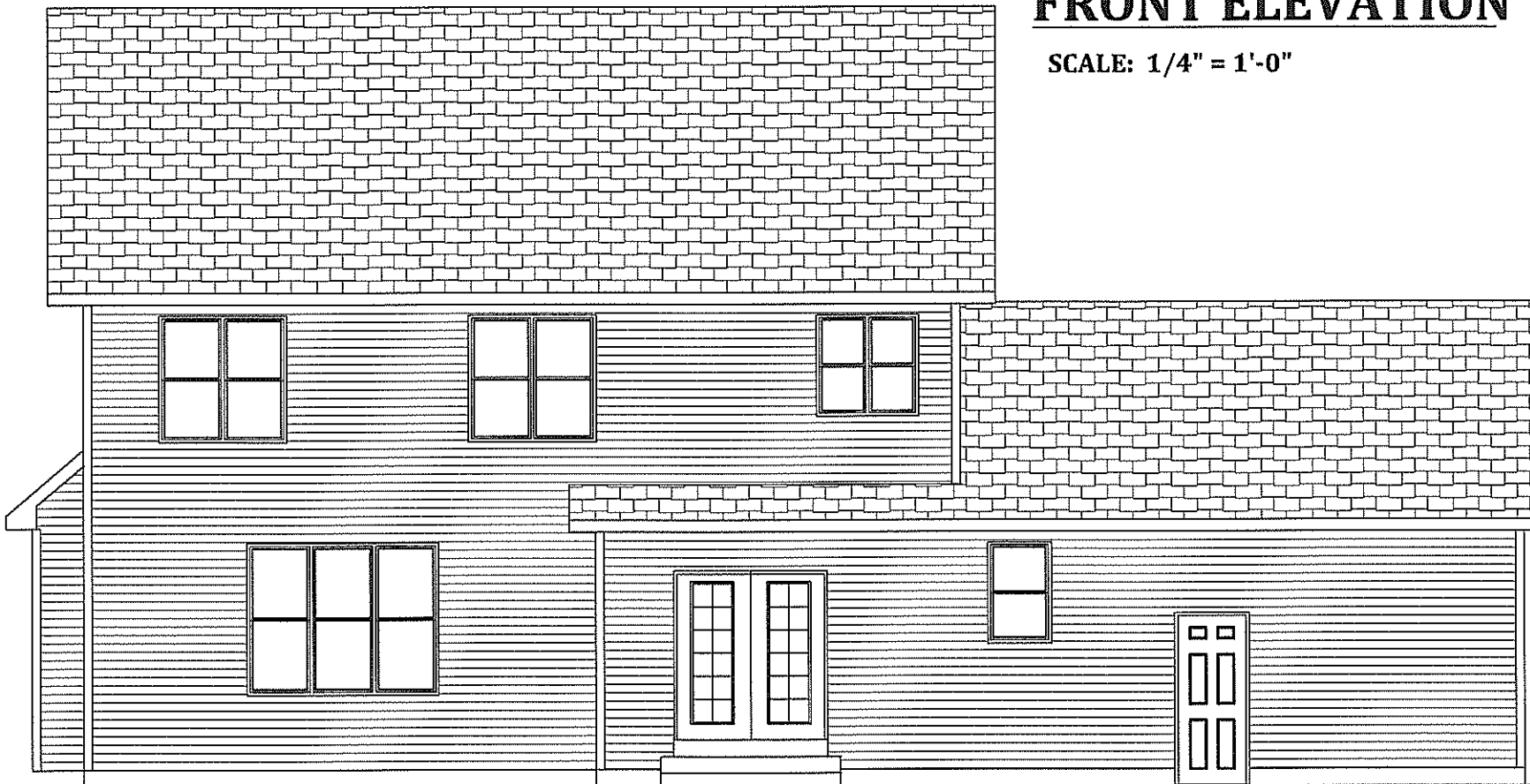
2ND FL. CLG HT.

1ST FL. CLG HT.

8'-1 1/8"  
1'-0 5/8"  
7'-10 7/8"  
9'-1 1/8"  
1'-2 1/8"  
29'-6 3/8"

**FRONT ELEVATION**

SCALE: 1/4" = 1'-0"



**REAR ELEVATION**

SCALE: 1/4" = 1'-0"

**6865 MODEL**

JANUARY 11, 2008

REVISED: 1/17/08

**6865 N. 107TH ST.  
MILWAUKEE**



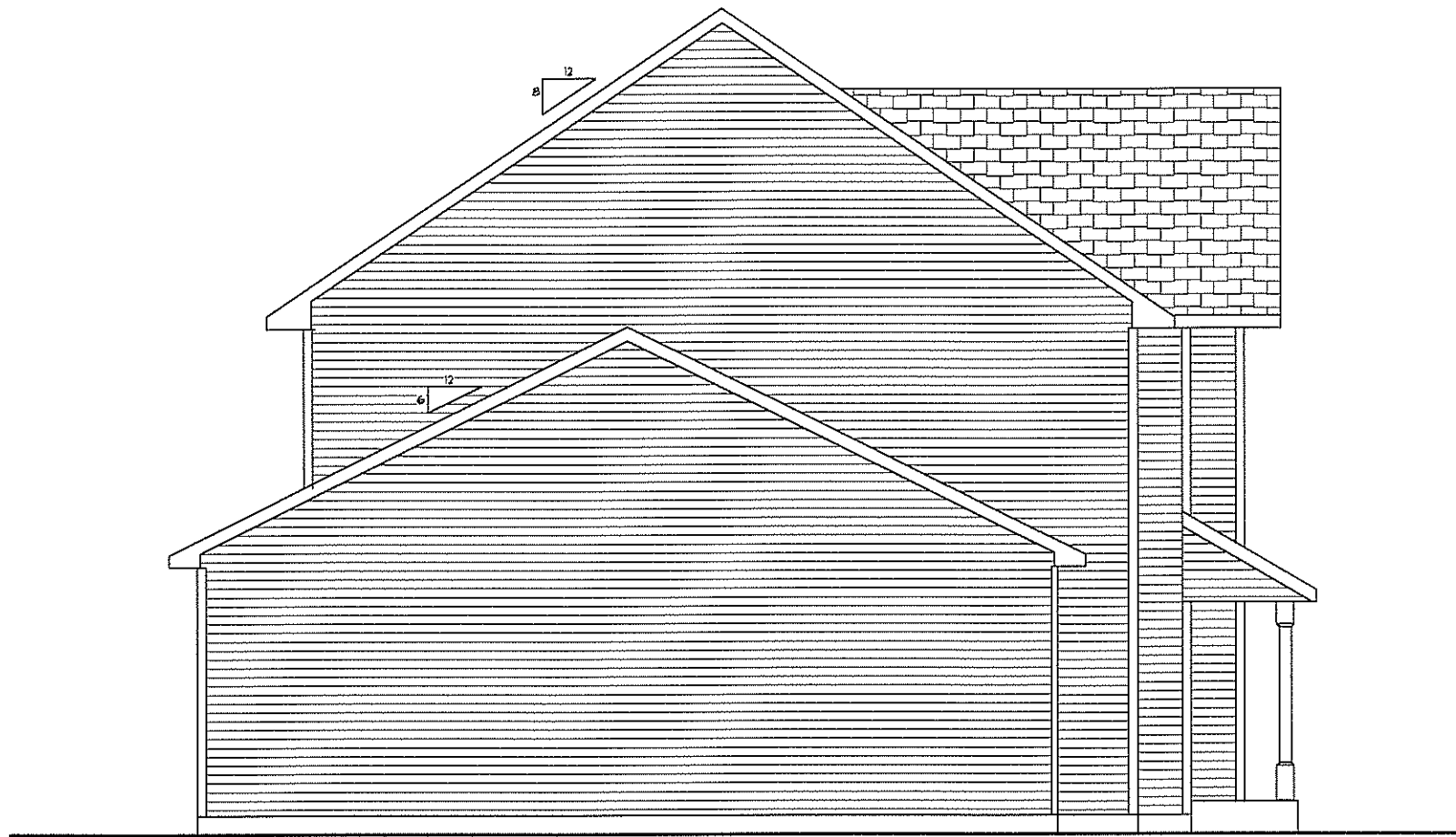
**QUALITY HOMES, INC.**

**DESIGN \* BUILD \* REALTOR**

Community Pride and Forward Vision

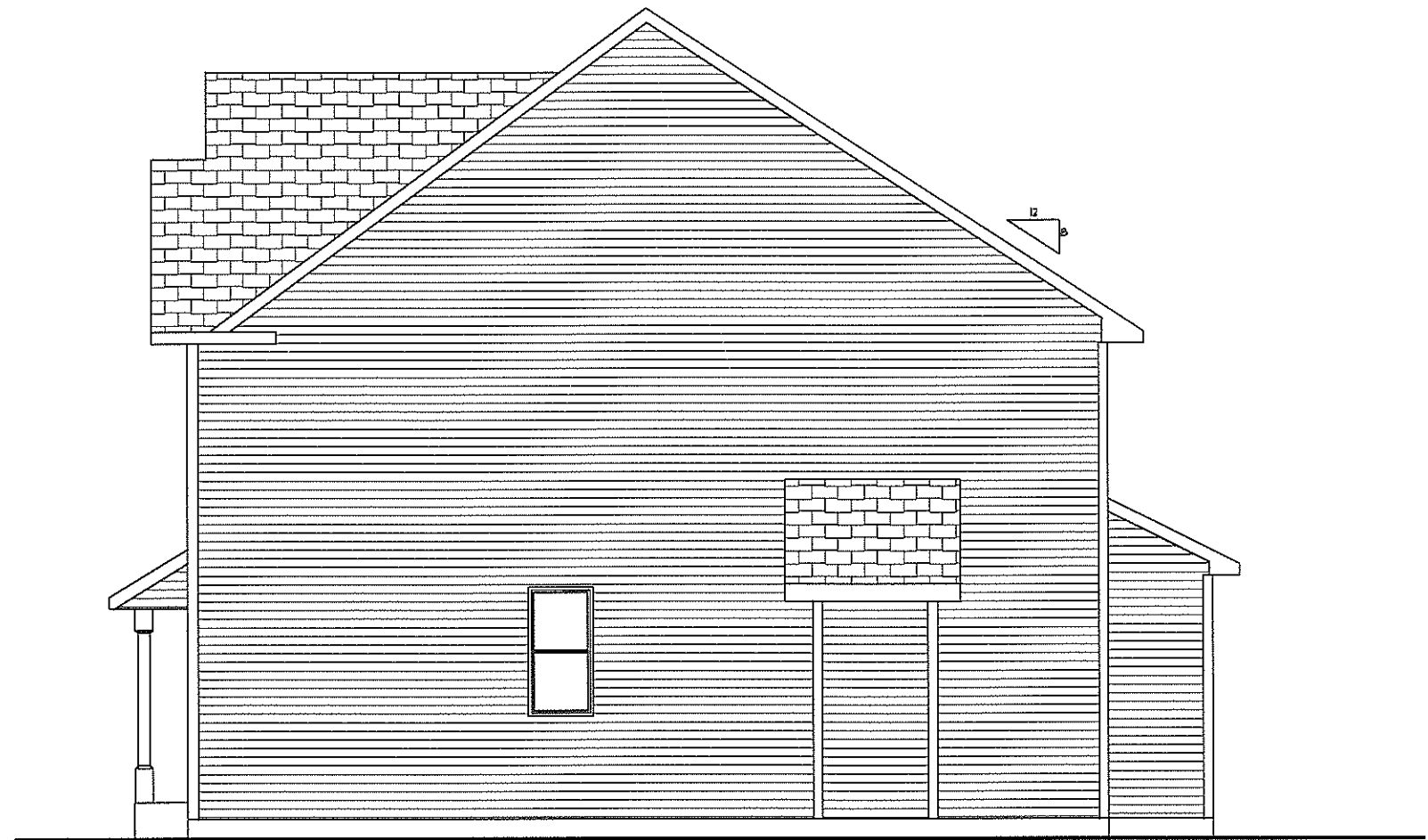
(414) 333-7212 OFFICE (414) 427-2524 FAX

WWW.KUHSHOMES.COM



**LEFT ELEVATION**

SCALE: 1/4" = 1'-0"



**RIGHT ELEVATION**

SCALE: 1/4" = 1'-0"

ENGINEERED ROOF TRUSSES (24" O.C.)  
 LATERAL BRACING AS REQUIRED  
 R-50 CEILING INSULATION (BLOWN IN)  
 5/8" DRYWALL ON CEILING

30 YR. RAISED PROFILE ASPHALT SHINGLES  
 15# ROOF FELT  
 ICE & WATER SHIELD IN VALLEYS  
 ROOF INTERSECTIONS, & 3' UP EAVES  
 RIDGE VENT (PER CODE)  
 15/32" O.S.B. SHEATHING

2'X4' PROPER VENT  
 2X6 SUB FASCIA  
 1X8 CEDAR FASCIA  
 3/8" SMOOTH PLYWOOD SOFFITS  
 SOFFITS VENTED PER CODE

7/16" O.S.B. SHEATHING  
 TYVEK HOUSE WRAP (TAPE SEAMS)  
 HARDPLANK SIDING  
 5/4" X 6" R.S. CEDAR WINDOW &  
 DOOR TRIM (FRONT ELEVATION)

TOP OF 1ST FLOOR WINDOW  
 CAPITAL VINYL CLAD DRL. HUNG  
 LOW-E W. ARGON  
 WINDOWS (GRIDS FRONT ELEVATION)

1/2" DRYWALL W/SQUARE CORNERS  
 SAND TEXTURE  
 (1) COAT INTERIOR LATEX FLAT  
 WALL PAINT  
 PRE-FINISHED OAK COLONIAL  
 MILLWORK  
 PRE-FINISHED 11.C. OAK FLUSH  
 INTERIOR DOORS

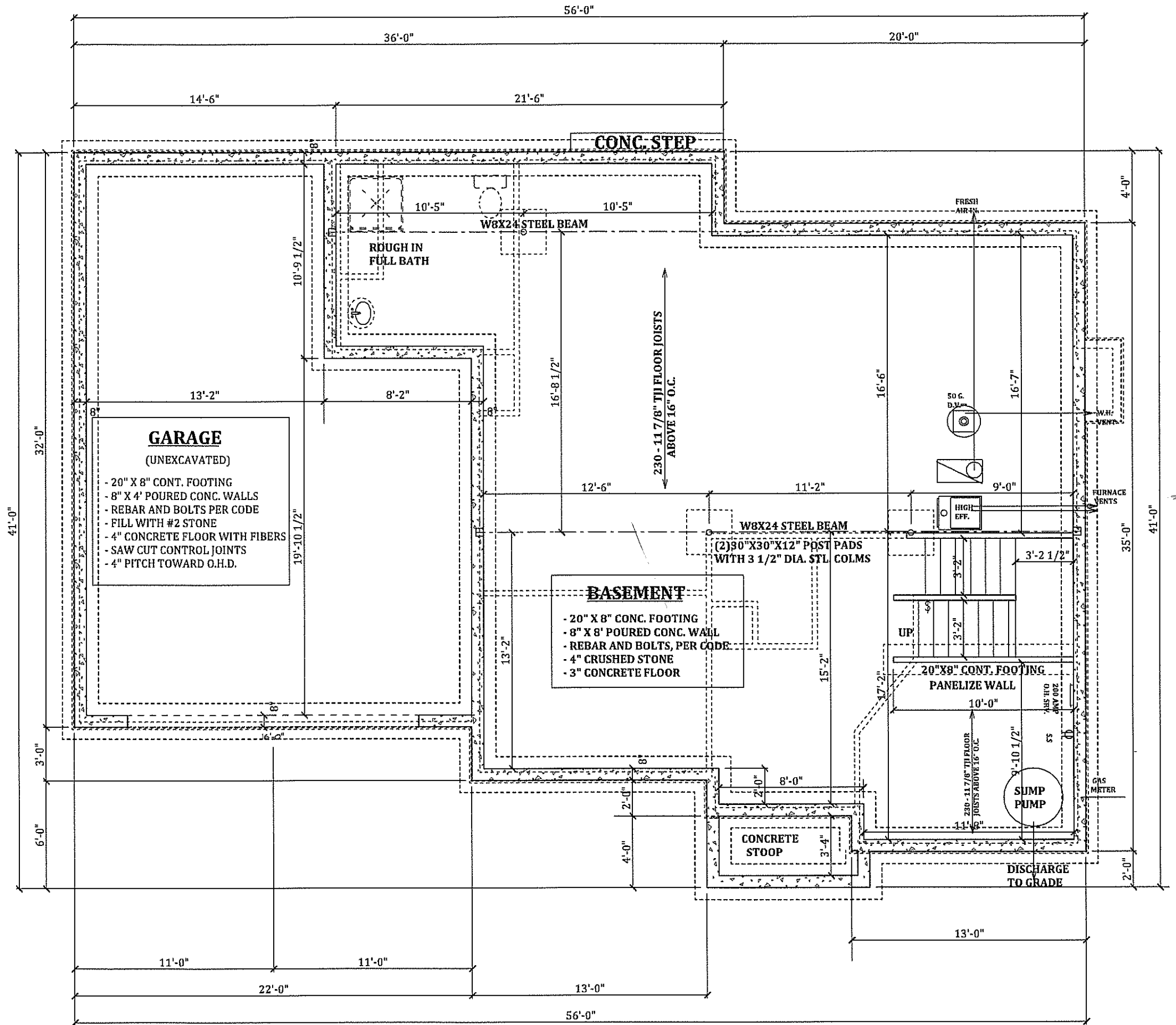
1" RIGID INSULATION (R-5) GRADE  
 DOWN TO FOOTING  
 WATERPROOF EXTERIOR OF  
 FOUNDATION

12" CRUSHED STONE  
 OVER FORM-A-DRAIN  
 (PER CODE)

20" X 8" CONTINUOUS FOOTING

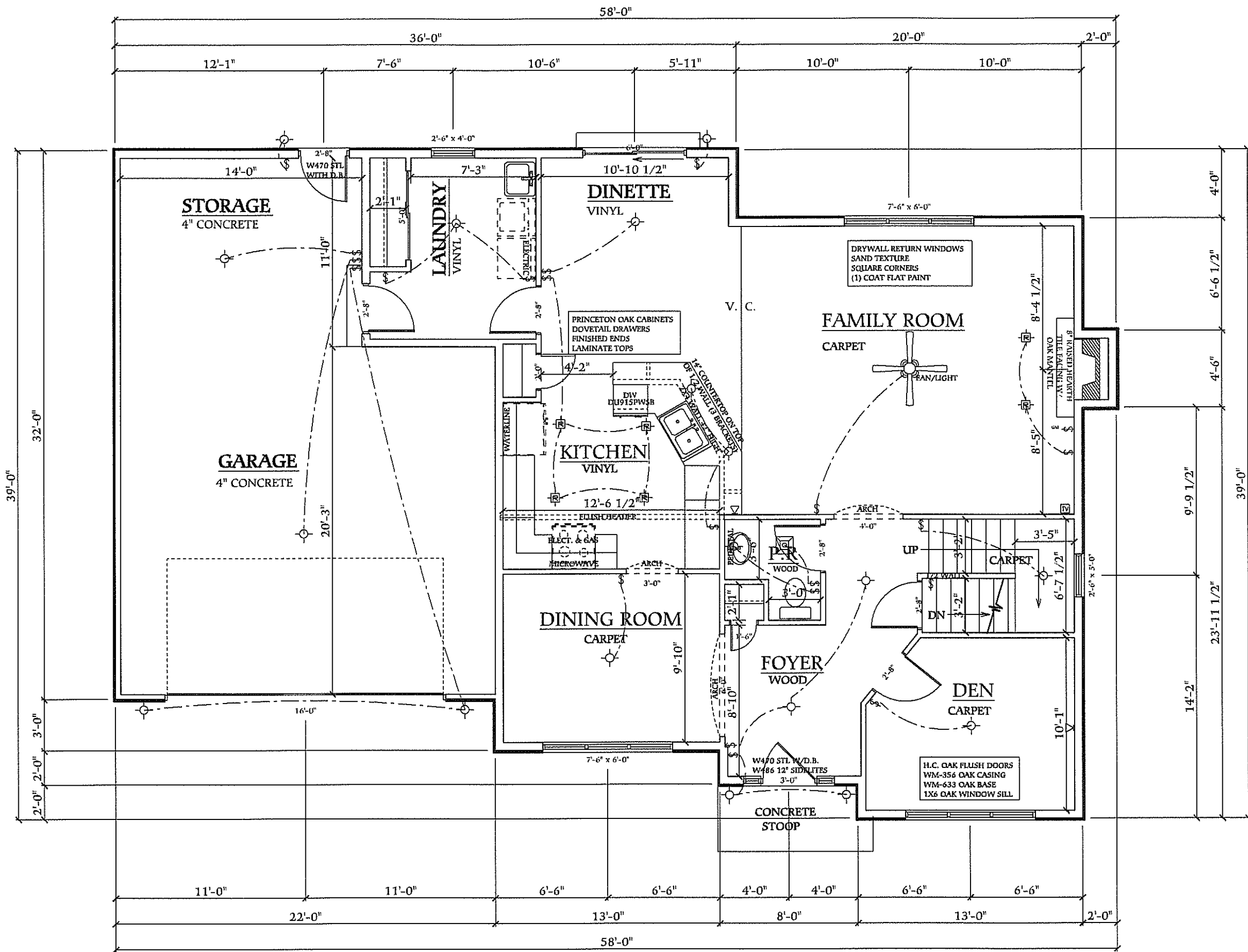
**SECTION DRAWING**

SCALE: 1/2" = 1'-0"



**FOUNDATION PLAN**

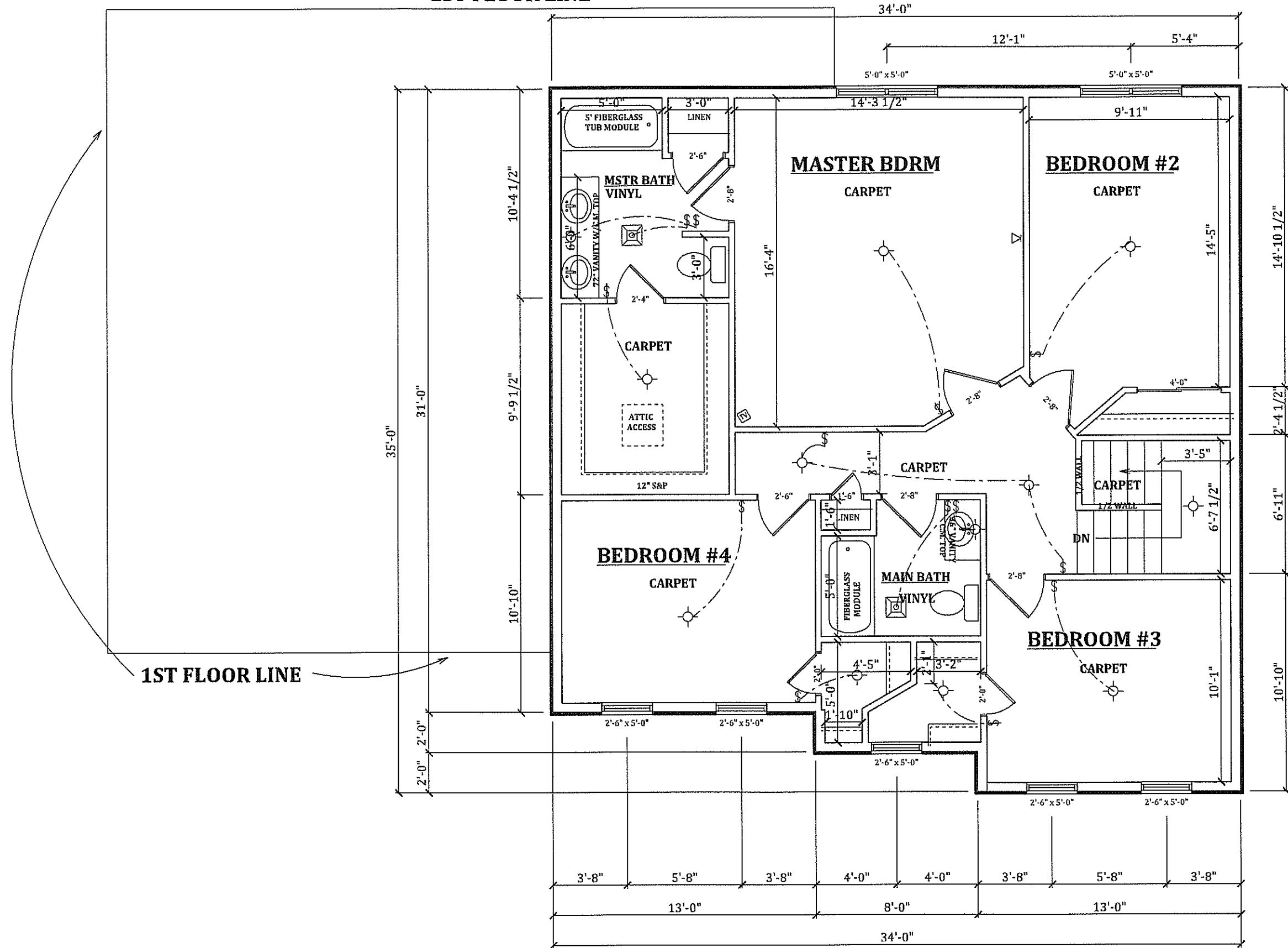
SCALE: 1/4" = 1'-0"



# 1ST FLOOR PLAN

SCALE: 1/4" = 1'-0" 1261 SQ. FT.

**1ST FLOOR LINE**



**2ND FLOOR PLAN**

SCALE: 1/4" = 1'-0" 1063 SQ. FT.