

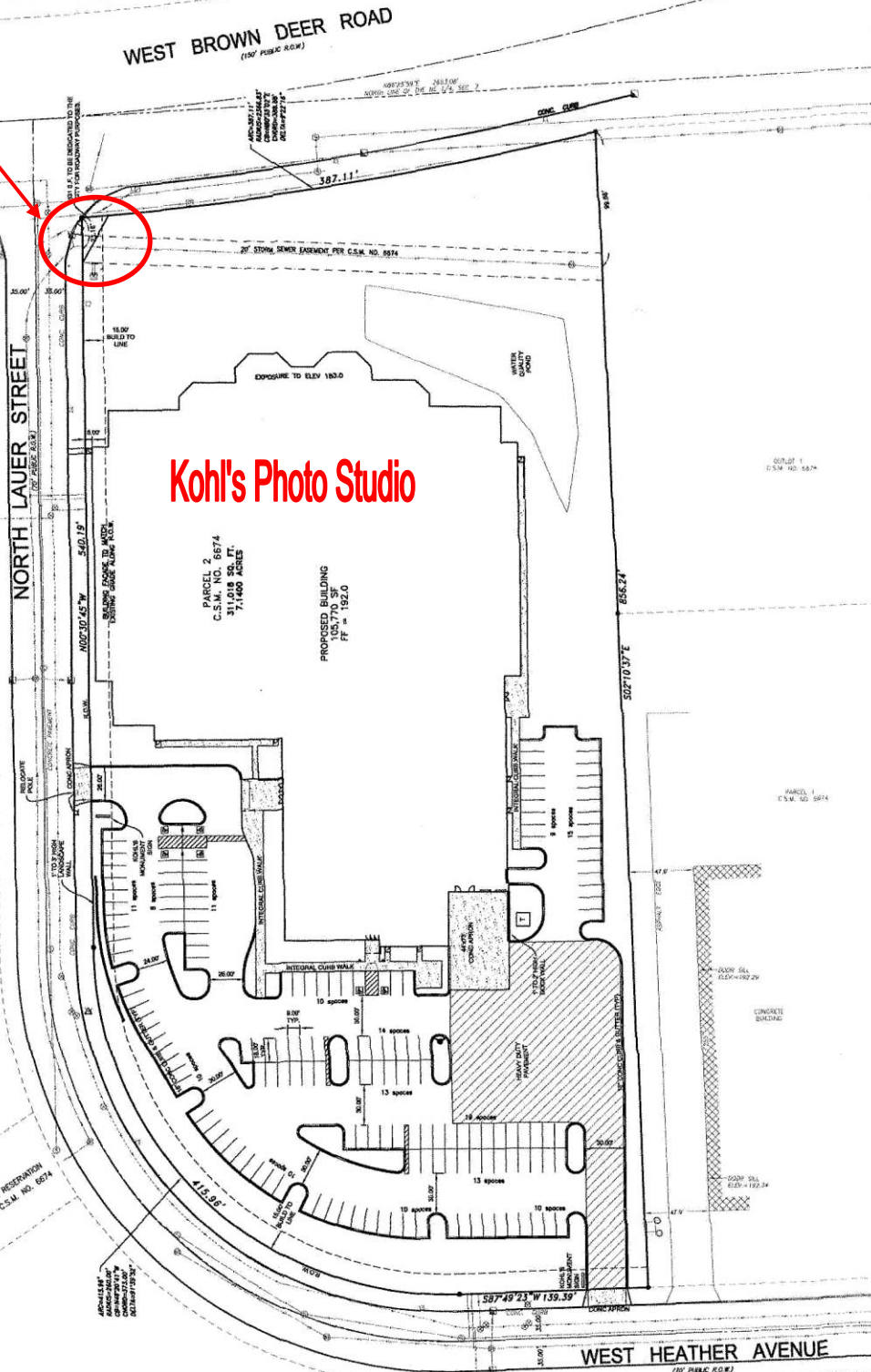
Exhibit A

PROJECT NO. 060425, 01-SP-010MG - KOHL'S PHOTO STUDIO, SHEET 1 OF 3, CITY OF MILWAUKEE, MILWAUKEE COUNTY, WISCONSIN

Dedication

PARKING SUMMARY

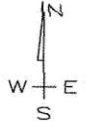
REGULAR STALLS	38
BIKE STALLS	1
TOTAL PARKING STALLS	39
ADA STALLS	2
ADA STALLS - 1	1
TOTAL PARKING STALLS IN ACCORDANCE WITH ADA	3
REGULAR STALLS	17
BIKE STALLS	1
TOTAL PARKING STALLS	18



PRELIMINARY SITE PLAN
 KOHL'S PHOTO STUDIO
 CITY OF MILWAUKEE, MILWAUKEE COUNTY, WISCONSIN

DESIGNED BY: A. KOCH
 CHECKED BY: A. KOCH
 APPROVED BY: [Signature]
 PROJECT NO.: 060425 - REV. DATE: JAN 25, 2007
 HOR SCALE: 1" = 40'

DIGGERS HOTLINE
 CALL DIGGER'S HOTLINE 1-800-484-6411



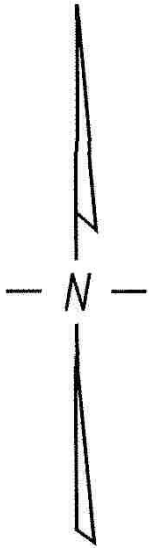
ASSURANCES
 I, THE UNDERSIGNED, A PROFESSIONAL ENGINEER, HEREBY CERTIFY THAT I AM A LICENSED PROFESSIONAL ENGINEER IN THE STATE OF WISCONSIN AND THAT I AM THE DESIGNER OF THE ABOVE DESCRIBED PROJECT. I HAVE REVIEWED THE PLANS AND SPECIFICATIONS AND AM SURE THAT THEY COMPLY WITH ALL APPLICABLE LAWS, ORDINANCES, AND REGULATIONS. I HAVE ALSO REVIEWED THE SURVEY AND FOUND IT TO BE ACCURATE AND COMPLETE. I HAVE ALSO REVIEWED THE ENGINEERING CALCULATIONS AND FOUND THEM TO BE CORRECT AND COMPLETE. I HAVE ALSO REVIEWED THE CONSTRUCTION RECORD AND FOUND IT TO BE ACCURATE AND COMPLETE.

NOTES
 1. ALL LAYOUTS AS SHOWN ON THIS PLAN ARE BASED ON THE CENTER-TO-CENTER OF INTERSECTIONS.
 2. THE LOCATION AND SIZE OF INTERSECTIONS ARE APPROXIMATE AND THE LOCATION OF THE CENTER-TO-CENTER OF INTERSECTIONS IS APPROXIMATE.
 3. THE LOCATION AND SIZE OF INTERSECTIONS ARE APPROXIMATE AND THE LOCATION OF THE CENTER-TO-CENTER OF INTERSECTIONS IS APPROXIMATE.
 4. THE LOCATION AND SIZE OF INTERSECTIONS ARE APPROXIMATE AND THE LOCATION OF THE CENTER-TO-CENTER OF INTERSECTIONS IS APPROXIMATE.
 5. THE LOCATION AND SIZE OF INTERSECTIONS ARE APPROXIMATE AND THE LOCATION OF THE CENTER-TO-CENTER OF INTERSECTIONS IS APPROXIMATE.

Copyright 2007, Landcraft Survey and Engineering, Inc. All Rights Reserved.

N.E. 1/4 SEC. 7, T.8N., R.21E.

39

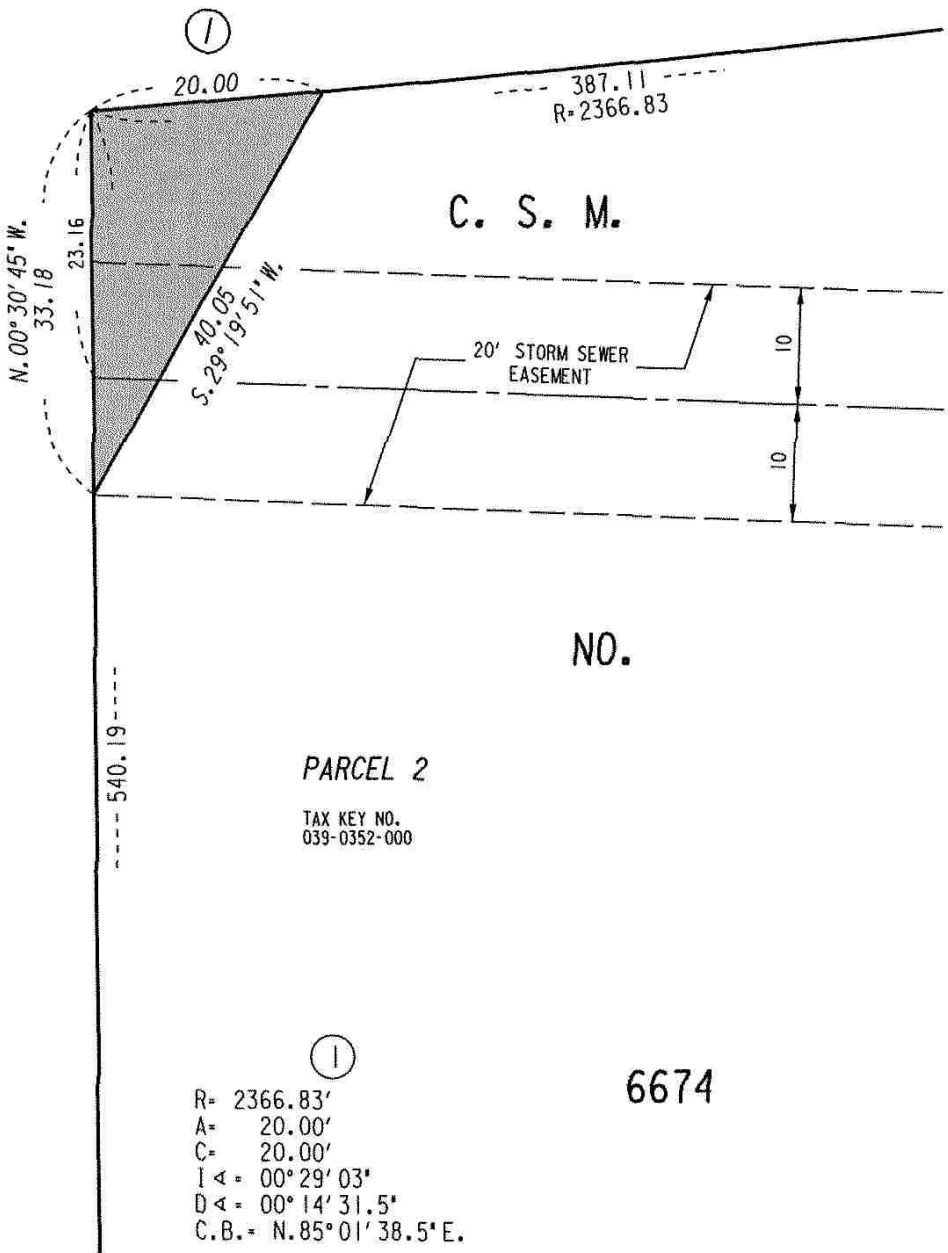


W. Brown Deer Rd.
(R.O.W. VARIES)

St.

(70' R.O.W.)

N. Lauer



①
 R= 2366.83'
 A= 20.00'
 C= 20.00'
 I < = 00° 29' 03"
 D < = 00° 14' 31.5"
 C.B. = N. 85° 01' 38.5" E.

6674



PROPERTY TO BE
ACQUIRED FOR PUBLIC
STREET PURPOSES

FILE NO.

INFRASTRUCTURE SERVICES DIVISION

MILWAUKEE, WISCONSIN

ASSIGNED TO: W.E. FUCHS

CH'K'D. BY: W.E. FUCHS

DRAWN BY: W.E.F.

DATE: MARCH 29, 2007

PROJECT/GRANT NO.: WK52360067

SCALE: 1" = 15'

APPROVED BY:

Marica Lindholm

CENTRAL DRAFTING & RECORDS MANAGER

[Signature]
CITY ENGINEER