



MILWAUKEE
HISTORIC
PRESERVATION
COMMISSION

LIVING WITH HISTORY

Certificate of Appropriateness

Milwaukee Historic Preservation Commission/200 E. Wells Street/Milwaukee, WI 53202/phone 414-286-5712/fax 414-286-3004

Property 1230 E. BRADY ST. **Brady Street Historic District**
Description of work Remove brick infill. Install new large storefront windows, transoms, awnings and doors.
Date issued 11/8/2011 PTS ID 52419 COA, storefront alterations

In accordance with the provisions of Section 320-21 (11) and (12) of the Milwaukee Code of Ordinances, the Milwaukee Historic Preservation Commission has issued a certificate of appropriateness for the work listed above. The work was found to be consistent with preservation guidelines. The following conditions apply to this certificate of appropriateness:

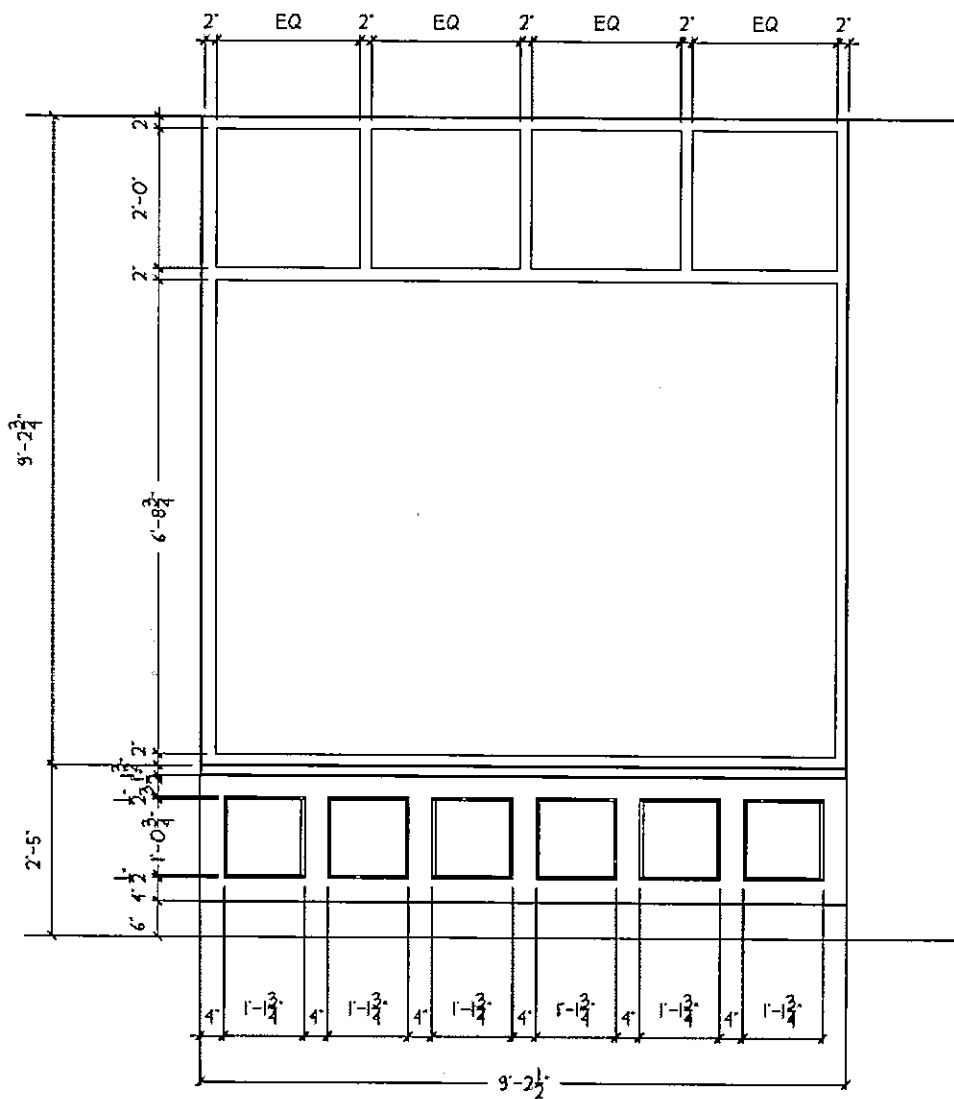
All work will be done according to attached drawings and photos. Brick on street level storefront will be stained match as closely as possible the brick on the second story. The underside of the canopy cannot be lighted. A light fixture to light the door is allowed.

All work must be done in a craftsman-like manner, and must be completed within one year of the date this certificate was issued. Staff must approve any changes or additions to this certificate before work begins. Work that is not completed in accordance with this certificate may be subject to correction orders or citations. If you require technical assistance, please contact Paul Jakubovich of the Historic Preservation staff as follows: Phone: (414) 286-5712 Fax: (414) 286-3004 E-mail: pjakub@milwaukee.gov.

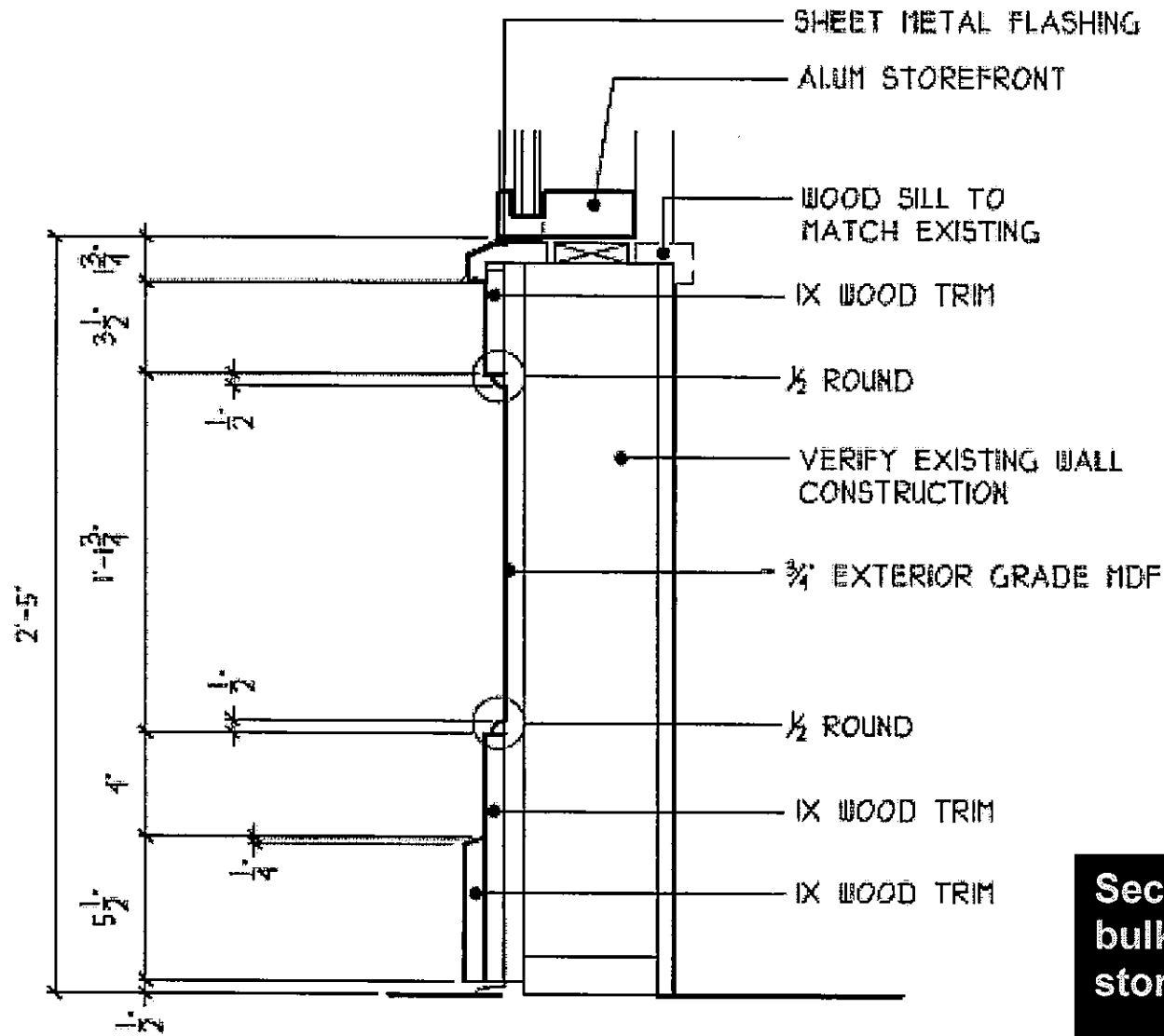
If permits are required, you are responsible for obtaining them from the Milwaukee Development Center. If you have questions about permit requirements, please consult the Development Center's web site, www.mkedcd.org/build, or call (414) 286-8210.

Paul Jakubovich
City of Milwaukee Historic Preservation

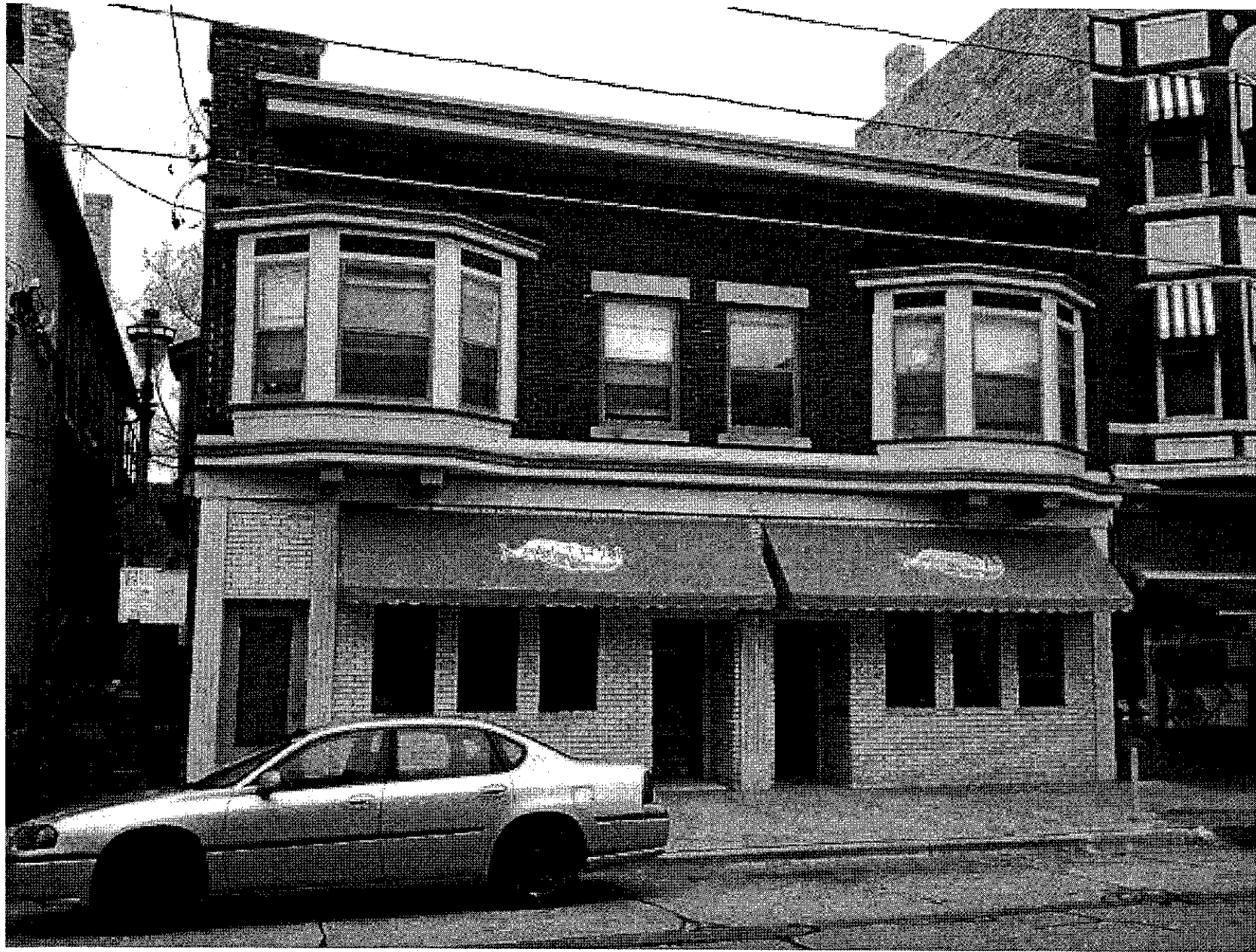
Copies to: Development Center, Ald. Nik Kovac, Inspector Jim Friedrichs (286-5982)



Elevation of new storefront windows with wood bulkhead



Section of new wood bulkhead beneath new storefront windows



1230 E. Brady Street with existing storefront



Cross-hatched areas show where material will be removed for new storefront windows

