

S.W. 32-7-22
ATLAS P. 732

432 WALKER'S POINT ADDITION

432-30

SCALE 50 FT. = 1 INCH

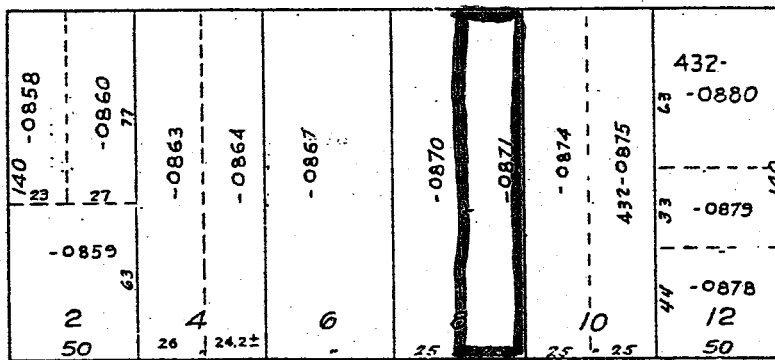


W. NATIONAL AVE. 1039 1037 1035 1033 1031 1029 1027 1025 1021 1019 1017 1015 1013 1011 1007 1003

ST.

808

812
814



ST.

809

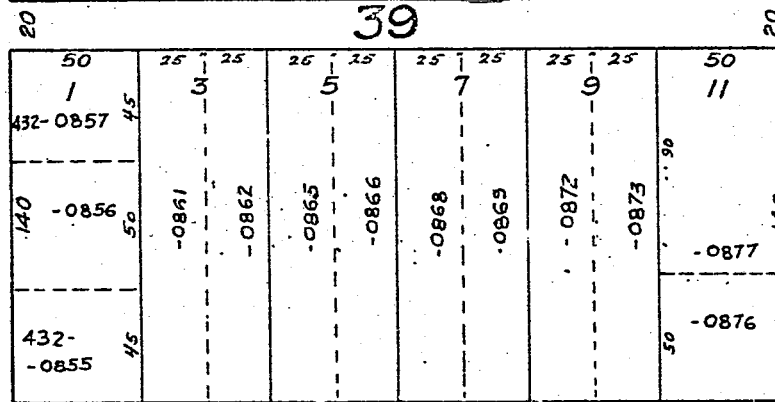
815

S. 11TH

824

828

836



823-7

S. 10TH

837

W. WALKER ST. 1032 1028 1024 1022 1016 1018 1014 1010 1008

MICROFILMED

157
206