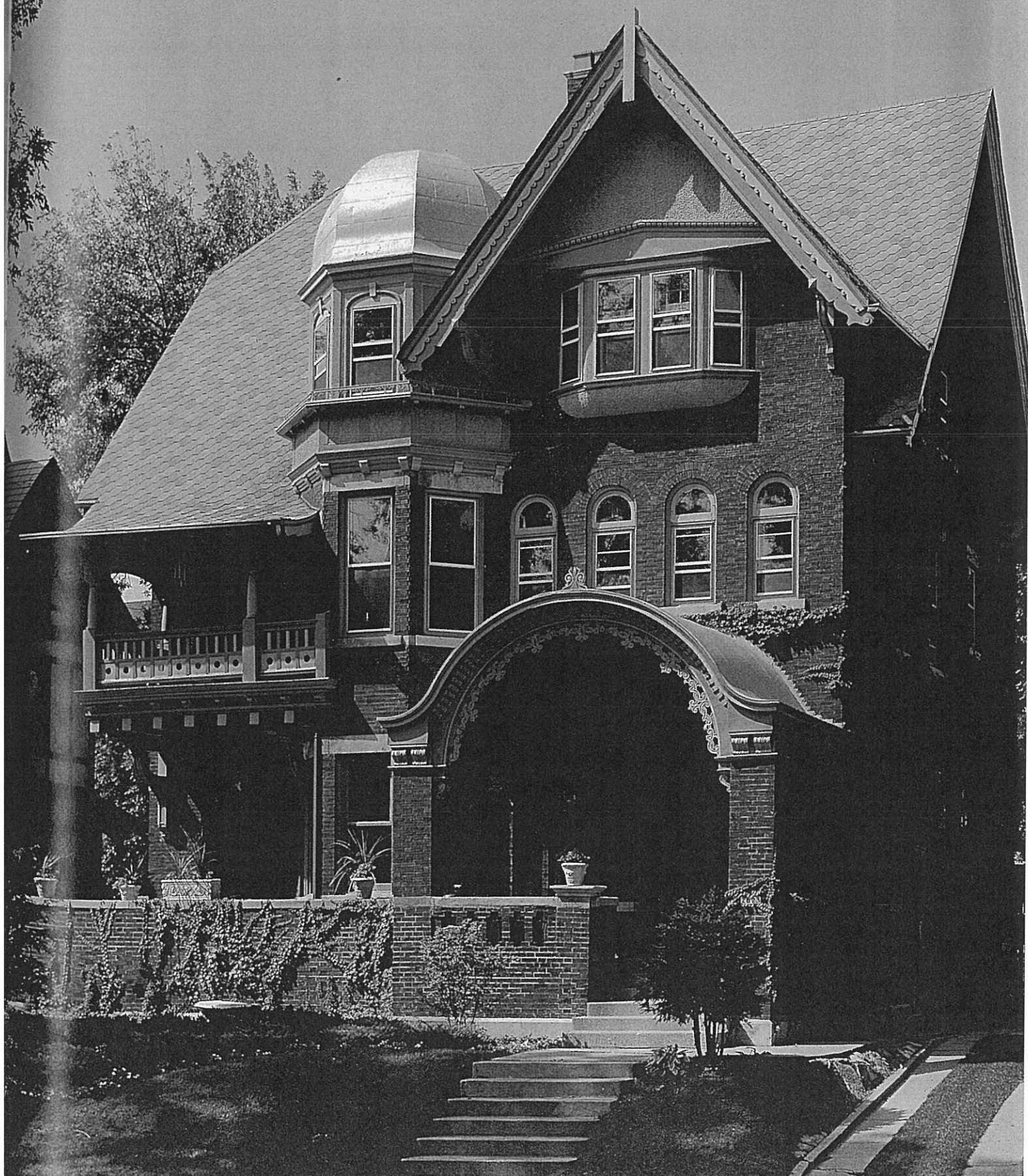


Daughter of Painted Ladies  
copyright 1987 by Elisabeth Pomada + Michael Larsen.

51,



DAUGHTER of PAINTED LADIES  
copyright 1987 by Elizabeth Pomada and Michael Larsen



BARRINGTON

(Above). 216 West Street. Queen Anne. 1891. The owners of this red, white, and blue home, painted during the Bicentennial, were looking for new ideas when we met. The three Queen Annes on this street were all built by a Mr. Halvey for his daughters. The house next door, seen through the trees, once pea green, red, and gold, had recently been painted a soft dainty yellow, trimmed in white and blue—and the neighbors were aghast.

WISCONSIN

MILWAUKEE

(Opposite). 2623 Wahl. Queen Anne/German Victorian. 1904. The delicious gingerbread on the porch and “consumption porch” of this blue and red brick building were given a lacy peach, cream, and blue luster by Landmark Painting. Although Milwaukee was called “the cream city” because of its cream-colored building bricks, this is a splendid example of the homes constructed at the turn of the century. Consumption porches were built so tubercular family members could remain at home but spend most of their time in the invigorating fresh air.