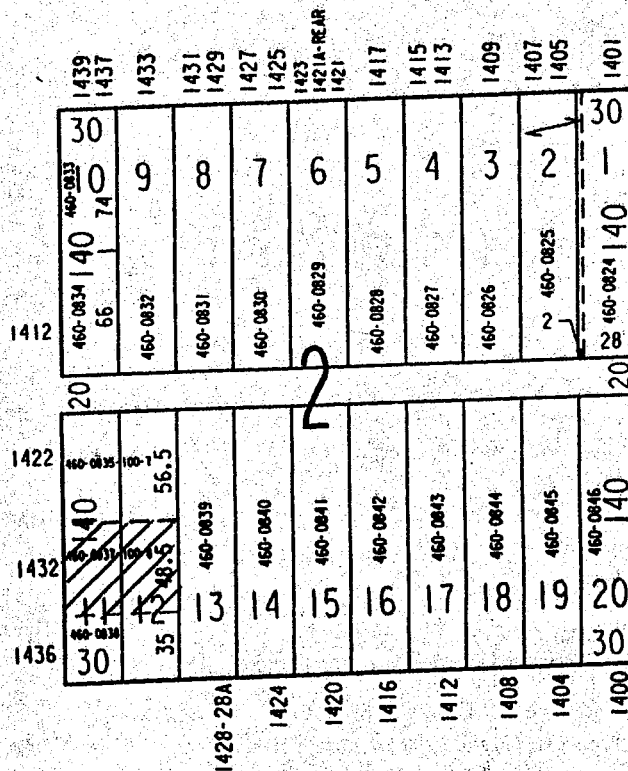


D. B. ROGERS & GEO. BURNHAM'S SUBDIVISION

W GREENFIELD AV

S 15TH ST

S 14TH ST



W ORCHARD ST

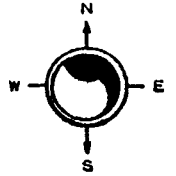
NE 18-7-22

ATLAS P. 311

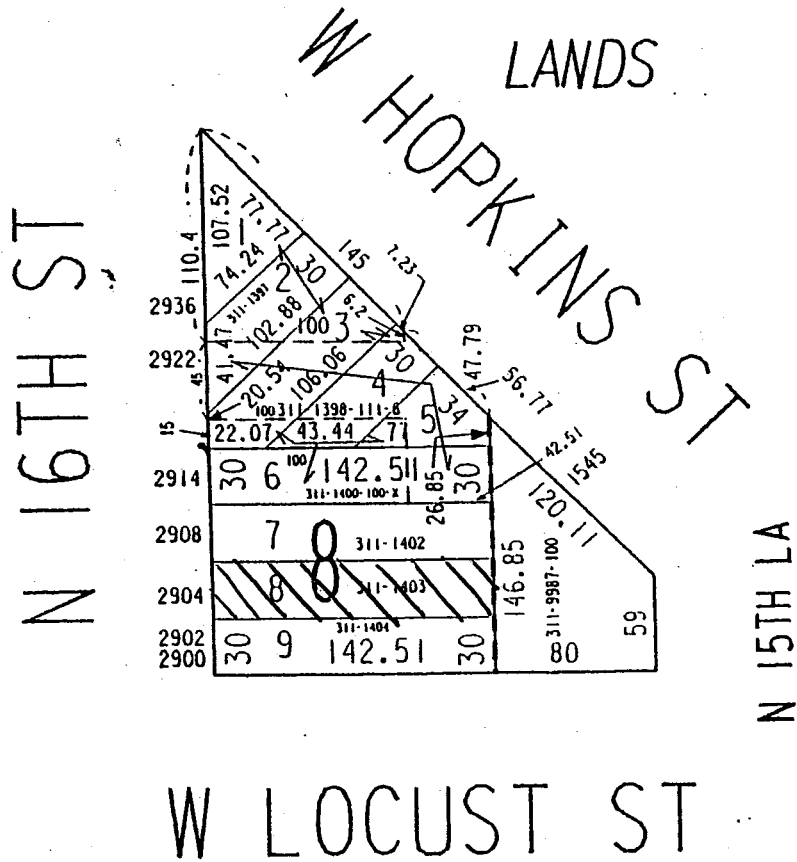
311

311-23

SCALE 1" = 80'



H.
HAERTEL'S
ADDITION
NO. 2



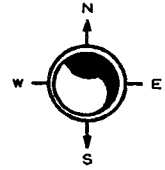
NE 24-7-21

349

349-47

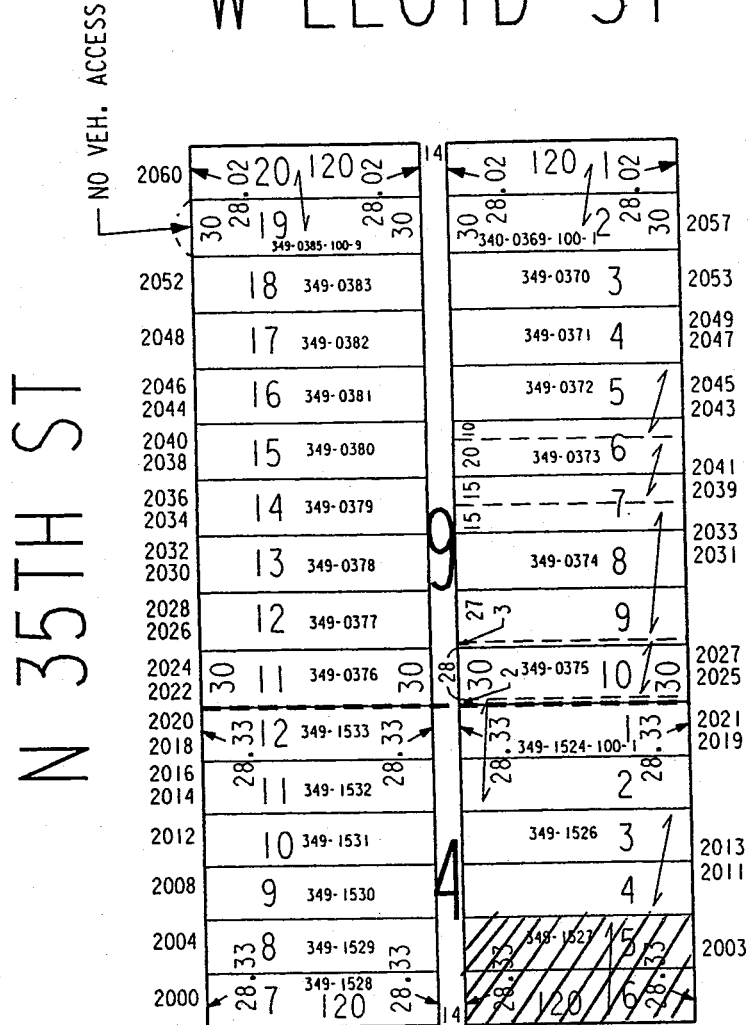
ATLAS P. 349

SCALE 1" = 80'



COLUMBIA PARK

W LLOYD ST



W BROWN ST

MALLORY & KERN'S ADDITION

S.E. 2-7-21
Atlas P. 248

248
PLEASANT GARDENS
Vol. 37 Page 47
W. HOPE AVE.

248-11



4176	117 248-0371 30	20	117 1 248-0342	4177
4170	-0370 29		2 -0343	4178
4166	-0369 28		3 -0344	4167
4160-2	-0368 27		4 -0345	4161-63
4154	-0367 26		5 -0346	4155-7
4150	-0366 25		6 -0347	4151
4144	-0365 24		7 -0348	4145
4140	-0364 23	5	8 -0349	4141
4134	-0363 22		9 -0350	4135
4128	-0362 21		10 -0351	4129
4124	-0361 20		11 -0352	4125
4118	-0360 19		12 -0353	4119-A
4112	-0359 18		13 -0354	4113
4106	-0358 17		14 -0355	4107
4100	-0357 16		15 -0356	4103
	117	20	117	

N. 48TH ST.

N. 47TH ST.

SIC-FOIL-MED 1-27-69

W. FIEBRANTZ AVE.

S.E. 11-6-21
ATLAS 7, 512

RESUBD OF LOTS 1,2,3,4,5 & 6
JACKSON PARK REALTY COS. SUBD.
512

512-23



W. MONTANA

ST.

2800	123.44 512-0459 1 .46	20	123.45 30 512-0487 .47	2803
2800	-0460 2 .48		29 -0486 .49	2807
2802	-0461 3 .50		28 -0485 .51	2813
2806	-0462 4 .52		27 -0484 .53	2819
2822	-0463 5 .54		26 -0483 .55	2825
2828	-0464 6 .56		25 -0482 .57	2829
2832	-0465 7 .58		24 -0481 .59	2835
2834	-0466 8 .61	5	23 -0480 .61	2839
2842-6	-0467 9 .62		22 -0479 .63	2843
2848-52	-0468 10 .65		21 -0478 .65	2849
2854-6	-0469 11 .67		20 -0477 .67	2855
2860-2	-0470 12 .69		19 -0476-200 .69	2861
2864-8	-0471 13 .71		18 -0476-180 .71	2867
2870	-0472 14 .73		17 -0475 .73	2871
2876	-0473 15 123.75	20	16 -0474 123.75	2877

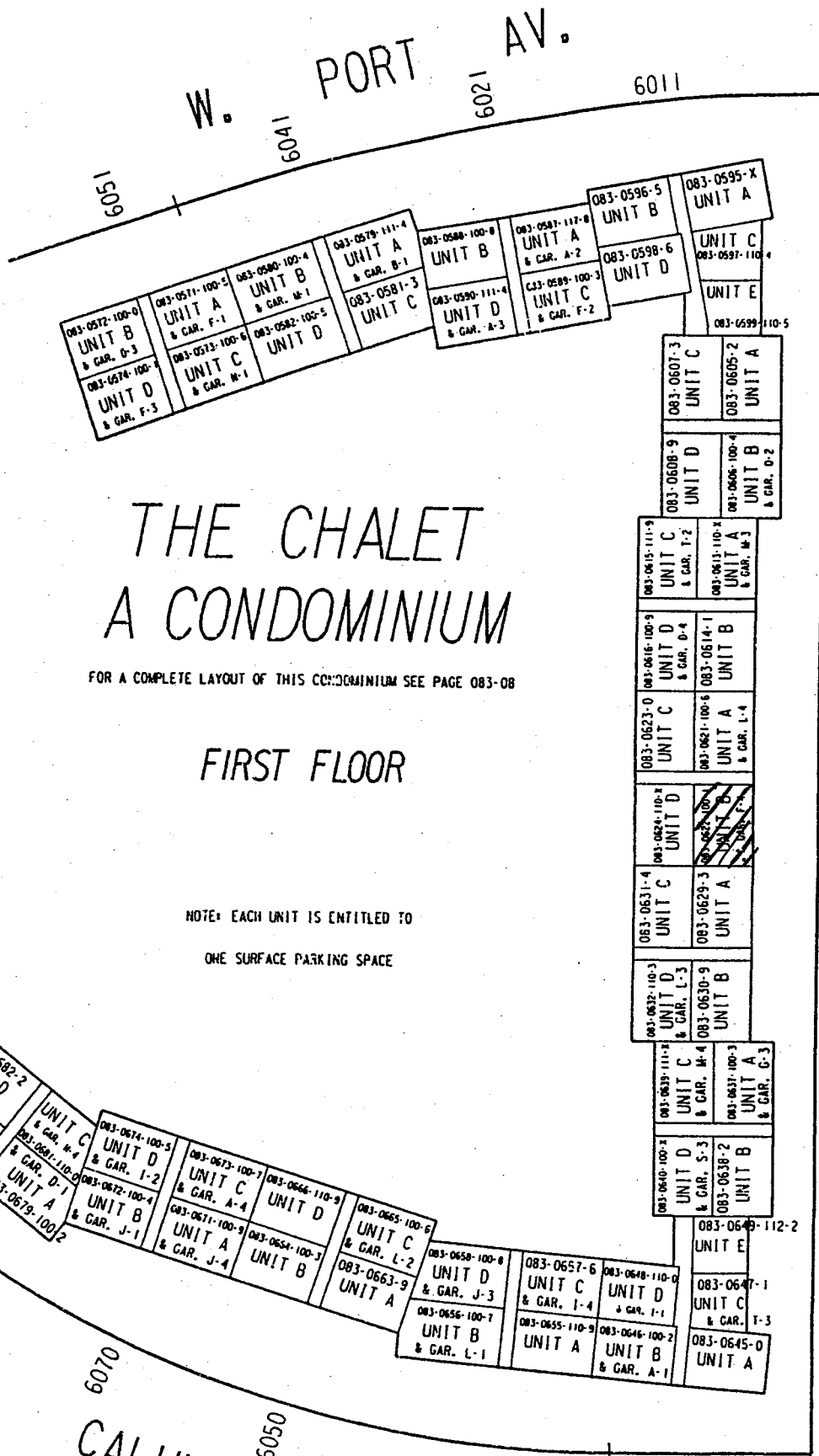
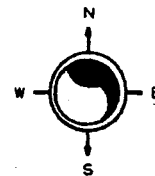
S. 49th ST.

S. 48th ST.

MICROFILMED 3-25-51

W. DAKOTA

ST.



THE CHALET A CONDOMINIUM

FOR A COMPLETE LAYOUT OF THIS CONDOMINIUM SEE PAGE 083-08

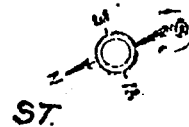
FIRST FLOOR

NOTE: EACH UNIT IS ENTITLED TO
ONE SURFACE PARKING SPACE

SW 20-8-21
ATLAS PAGE 145

145

145-18
SCALE 1" = 80'



N. BOURBON
ST.

AVE. 10306

10313-15

10321-23

10327
10329

10403
10405

W KIEHNAU
10413
10419
10421
10427
10429

ST

N. 105TH

6027

6619

6617

6605

6603

6601

ST.

W. DAPHNE

N. 106TH

ST.

10404
10412

10422

10430

10438

10446

10502

10510

10520

MILLWOOD PARK
W. JONEN

