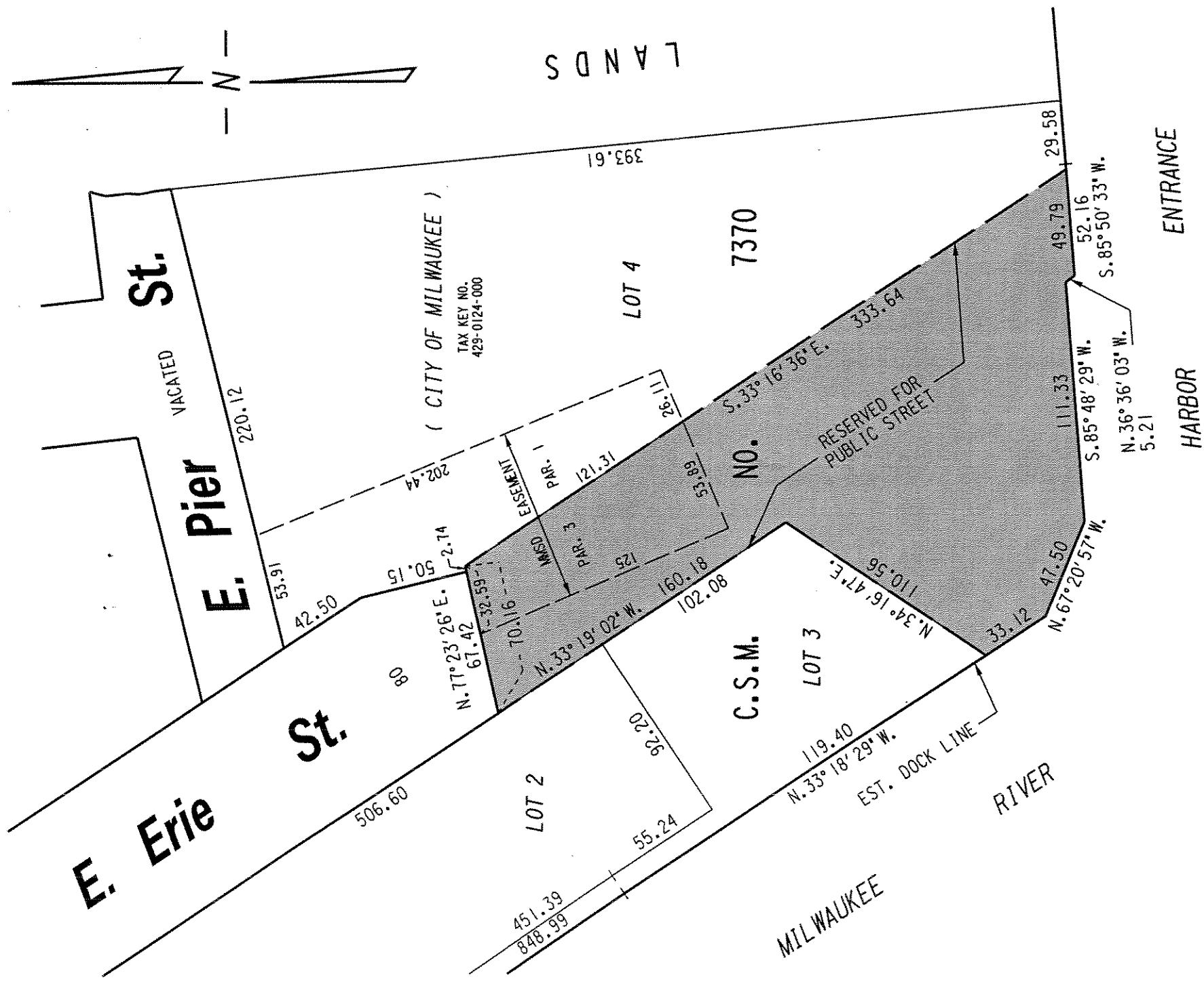


429

N.W. 1/4 SEC. 33, T.7N., R.22E.



TAX KEY NO.
429-0124-000

(CITY OF MILWAUKEE)

RESERVATION FOR
PUBLIC STREET PURPOSES
TO BE ACCEPTED

REVISED: 1-25-2007
NORTH LINE LIMITS REVISED

FILE NO. 060565

INFRASTRUCTURE SERVICES DIVISION

MILWAUKEE, WISCONSIN

ASSIGNED TO: W.E. FUCHS

CH'K'D. BY: W.E. FUCHS

DRAWN BY: W.E.F.

DATE: AUG. 31, 2006

PROJECT/GRANT NO.: WK52360063

SCALE: 1" = 60'

APPROVED BY:

Mauro Lindholm
CENTRAL DRAFTING & RECORDS MANAGER

Jeffrey Palmsky
CITY ENGINEER