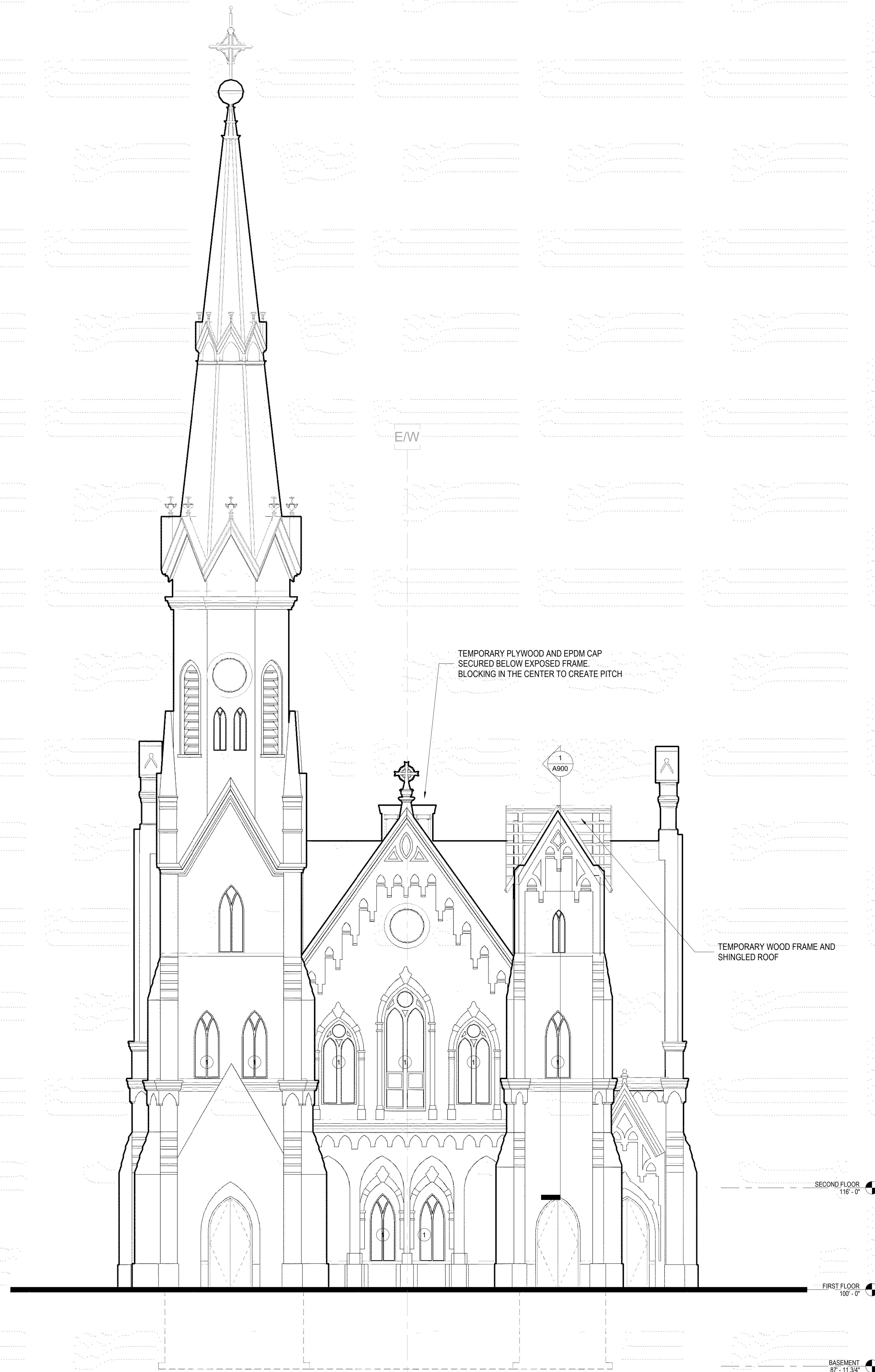


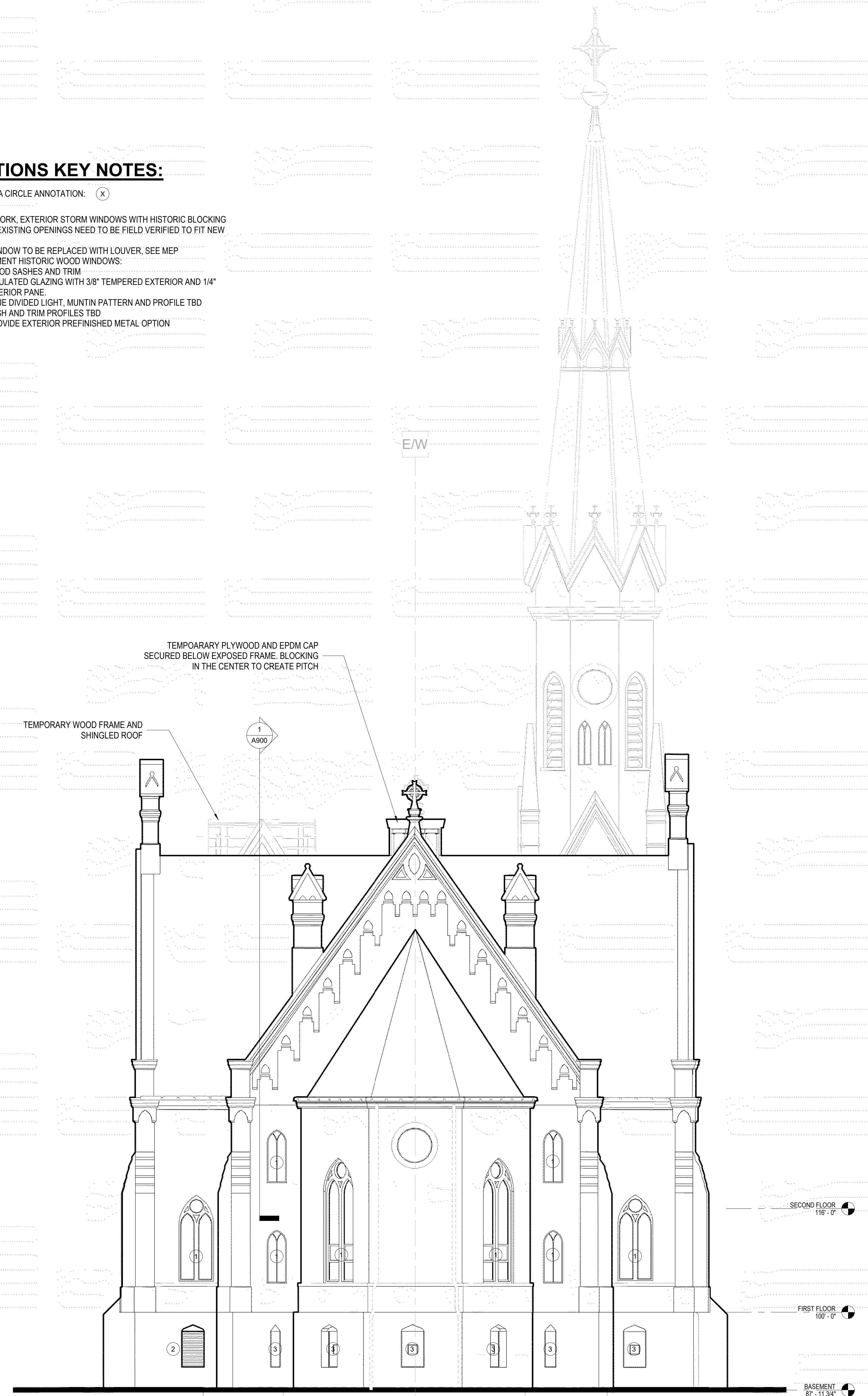
ELEVATIONS KEY NOTES:

INDICATED WITH A CIRCLE ANNOTATION: (X)

1. FUTURE WORK, EXTERIOR STORM WINDOWS WITH HISTORIC BLOCKING PROFILE. EXISTING OPENINGS NEED TO BE FIELD VERIFIED TO FIT NEW STORM
2. BLOCK WINDOW TO BE REPLACED WITH LOUVER. SEE MEP
3. REPLACEMENT HISTORIC WOOD WINDOWS:
 - A. WOOD SASHES AND TRIM
 - B. INSULATED GLAZING WITH 3/8" TEMPERED EXTERIOR AND 1/4" INTERIOR PANE.
 - C. TRUE DIVIDED LIGHT, MUNTIN PATTERN AND PROFILE TBD
 - D. SASH AND TRIM PROFILES TBD
 - E. PROVIDE EXTERIOR PREFINISHED METAL OPTION



1 BUILDING ELEVATION - WEST
SCALE: 1/8" = 1'-0"



2 BUILDING ELEVATION - EAST
SCALE: 1/8" = 1'-0"

ELEVATIONS KEY NOTES:

INDICATED WITH A CIRCLE ANNOTATION: (X)

1. FUTURE WORK, EXTERIOR STORM WINDOWS WITH HISTORIC BLOCKING PROFILE. EXISTING OPENINGS NEED TO BE FIELD VERIFIED TO FIT NEW STORM
2. BLOCK WINDOW TO BE REPLACED WITH LOUVER. SEE MEP
3. REPLACEMENT HISTORIC WOOD WINDOWS:
 - A. WOOD SASHES AND TRIM
 - B. INSULATED GLAZING WITH 3/8" TEMPERED EXTERIOR AND 1/4" INTERIOR PANE.
 - C. TRUE DIVIDED LIGHT, MUNTIN PATTERN AND PROFILE TBD
 - D. SASH AND TRIM PROFILES TBD
 - E. PROVIDE EXTERIOR PREFINISHED METAL OPTION



1 BUILDING ELEVATION - WEST
SCALE: 1/8" = 1'-0"



2 BUILDING ELEVATION - EAST
SCALE: 1/8" = 1'-0"