

CHANNEL LETTER SPECIFICATIONS :

Scope of Work : (Side) Manufacture and install (1) set of channel letters and tagline sign on raceways as shown.

Letters : Routed .040" aluminum backs, .040" x 5" tall returns, flanged & crimped construction.

Colors : Letter interiors prefinished White, returns prefinished Wrisco "Black".

Letter Faces : Routed 3/16" "Red" acrylic (#2283), 1" Jewelite "Black" trimcap.

Raceway : fabricated aluminum raceway painted to match wall color (color to be determined)

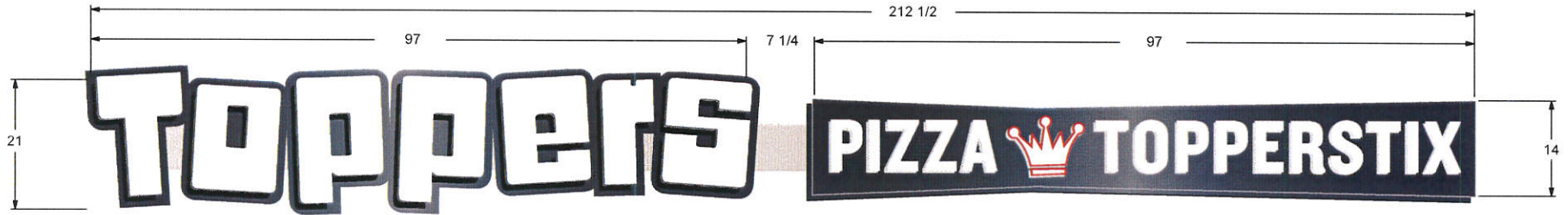
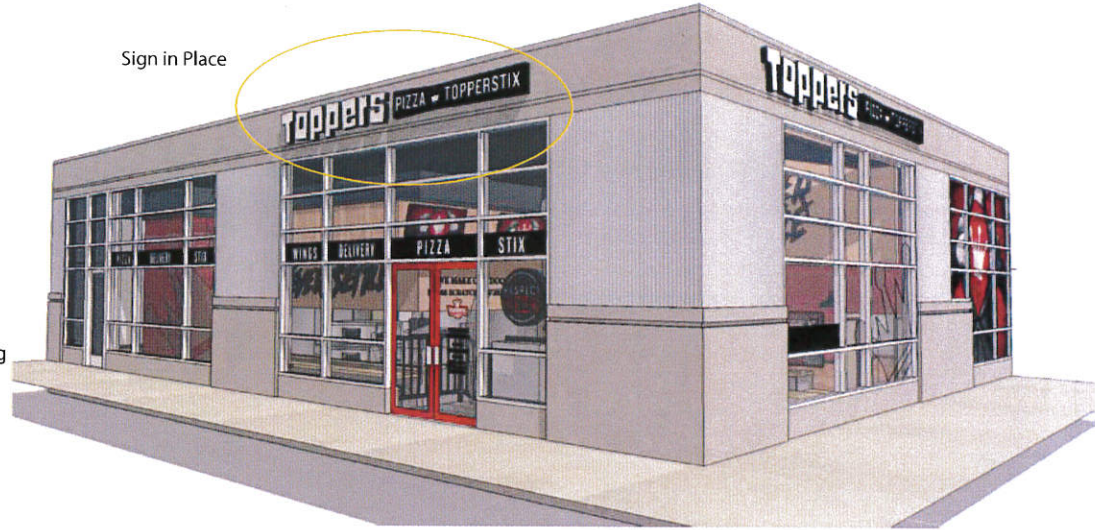
Backers : Routed oversized .040" Black aluminum backs

Tagline : Routed .080" white aluminum back, aluminum angle riveted around perimeter for mounting of face thru returns of routed .090" aluminum face, .090" x 5" returns, returns welded to backside of face, exterior along with face painted "Black", interior painted white, tagline copy and crown to be 3/4" routed clear "Push-Thru" individual acrylic letters, faces covered with overlay of Gerber translucent White vinyl, "Crown" to have additional layer of Gerber translucent "Cardinal Red" (230-53) vinyl border, all backs covered with white light diffuser vinyl, letters installed from backside using studs welded to rear of face. (studs welded to backside of face prior to welding of returns).

Lighting : Letters and cabinet internally-lit using Sloan white LED modules.

Electrical : 120 volt, UL listed & labeled, power supplies inside raceways.

Location : Sign centered left to right on back wall as shown.



VOLTAGE
 120 Volts
 277 Volts



UL Listed
 © Copyright

JNB SIGNS INCORPORATED 1221 Venture Drive, Suite 1, Janesville, WI 53546 Phone : 1-800-243-7997 Fax : 1-608-754-7822
This original and unpublished design is copyrighted and the exclusive property of JNB Signs, Inc. and is not to be exhibited, copied or reproduced in whole or in part without written permission. All sizes and dimensions are shown for clients conception of a current project and are not to be understood as being exact size or exact scale.
JNB Signs is not responsible for differences in colors between this print and final product, we will attempt to match colors as closely as possible but final choices will be made by using vinyl and paint samples when possible, but we cannot guarantee exact color matches due to differing surfaces, materials and paints being applied.

CLIENT Toppers Pizza

SALESMAN Kevin Cook

CUSTOMERS SIGNATURE X _____ DATE _____

JOB SITE Milwaukee, WI

ARTIST Mike

DATE 03-14-16

DRAWING 06178-15

CHANNEL LETTER SPECIFICATIONS :

Scope of Work : (Side) Manufacture and install (1) set of channel letters and tagline sign on raceways as shown.

Letters : Routed .040" aluminum backs, .040" x 5" tall returns, flanged & crimped construction.

Colors : Letter interiors prefinished White, returns prefinished Wrisco "Black".

Letter Faces : Routed 3/16" "Red" acrylic (#2283), 1" Jewelite "Black" trimcap.

Raceway : fabricated aluminum raceway painted to match wall color (color to be determined)

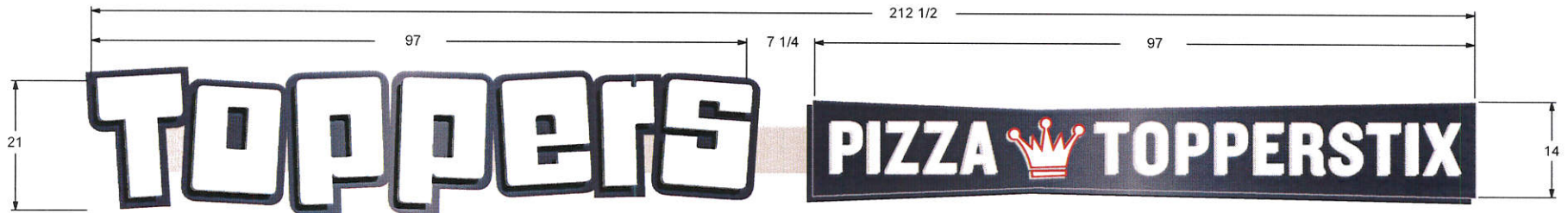
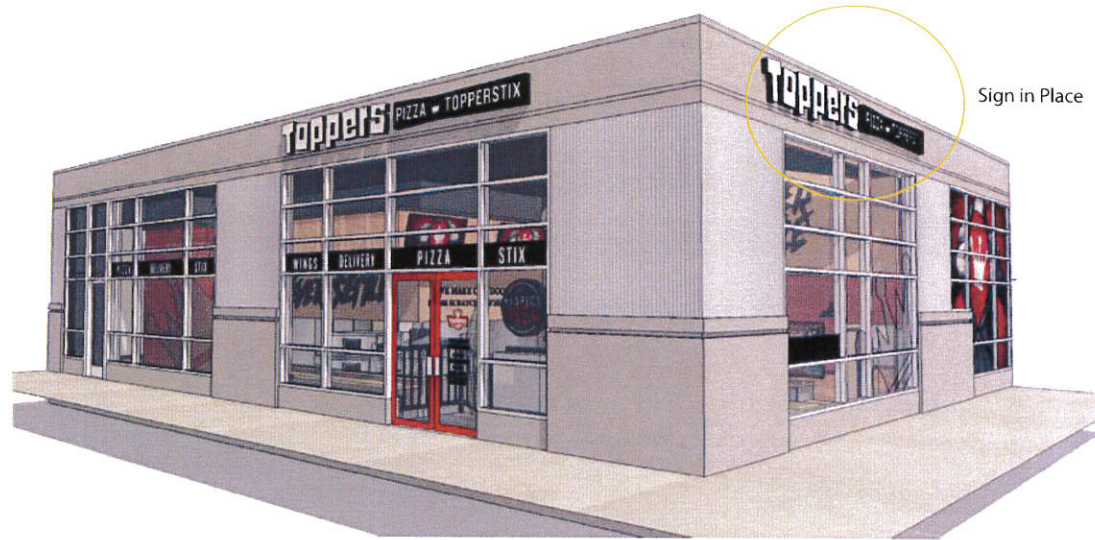
Backers : Routed oversized .040" Black aluminum backs

Tagline : Routed .080" white aluminum back, aluminum angle riveted around perimeter for mounting of face thru returns of routed .090" aluminum face, .090" x 5" returns, returns welded to backside of face, exterior along with face painted "Black", interior painted white, tagline copy and crown to be 3/4" routed clear "Push-Thru" individual acrylic letters, faces covered with overlay of Gerber translucent White vinyl, "Crown" to have additional layer of Gerber translucent "Cardinal Red" (230-53) vinyl border, all backs covered with white light diffuser vinyl, letters installed from backside using studs welded to rear of face. (studs welded to backside of face prior to welding of returns).

Lighting : Letters and cabinet internally-lit using Sloan white LED modules.

Electrical : 120 volt, UL listed & labeled, power supplies inside raceways.

Location : Sign centered left to right on back wall as shown.



VOLTAGE
 120 Volts
 277 Volts



UL Listed
 Copyright

JNB SIGNS INCORPORATED 1921 Venture Drive, Suite 1, Janesville, WI 53546 Phone : 1-800-243-7997 Fax : 1-608-754-7822
This original and unpublished design is copyrighted and the exclusive property of JNB Signs, Inc. and is not to be exhibited, copied or reproduced in whole or in part without written permission. All sizes and dimensions are shown for clients conception of a current project and are not to be understood as being exact size or exact scale.
 JNB Signs is not responsible for differences in colors between this print and final product, we will attempt to match colors as closely as possible but final choices will be made by using vinyl and paint samples when possible, but we cannot guarantee exact color matches due to differing surfaces, materials and paints being applied.

CLIENT Toppers Pizza

SALESMAN Kevin Cook

JOB SITE Milwaukee, WI

ARTIST Mike

CUSTOMERS SIGNATURE X _____ DATE _____

DATE 03-14-16

DRAWING 06178-14

DOOR GRAPHIC SPECIFICATIONS :

Scope of Work : Manufacture and install (1) vinyl door graphic as shown.

Graphic : Applied 1st surface vinyl, Gerber opaque "Cardinal Red" (220-53), "Metallic Gold" (220-131) & "White" (220-10)

Installation Directions : Graphic will be separated by colors, apply white graphic layer to window first then apply red and gold vinyls using white graphics as a guide, Gold vinyls will overlap white graphic approximately 1/8" for shrinkage.

Location : Graphic located approx. 47" from floor to bottom of graphic, exact location to be finalized at install.



Listed
© Copyright

JNB SIGNS INCORPORATED 1221 Venture Drive, Suite 1, Janesville, WI 53546 Phone : 1-800-243-7997 Fax : 1-608-754-7892
This original and unpublished design is copyrighted and the exclusive property of JNB Signs, Inc. and is not to be exhibited, copied or reproduced in whole or in part without written permission. All sizes and dimensions are shown for clients conception of a current project and are not to be understood as being exact size or exact scale.
 JNB Signs is not responsible for differences in colors between this print and final product, we will attempt to match colors as closely as possible but final choices will be made by using vinyl and paint samples when possible, but we cannot guarantee exact color matches due to differing surfaces, materials and paints being applied.

CLIENT Toppers Pizza

SALESMAN Kevin Cook

CUSTOMERS SIGNATURE X _____ DATE _____

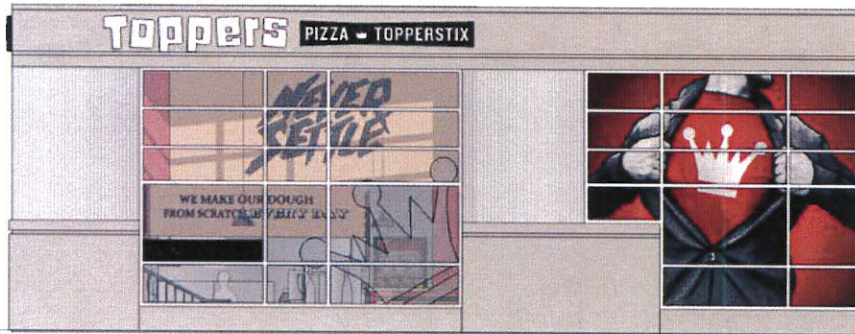
JOB SITE Milwaukee, WI

ARTIST Mike

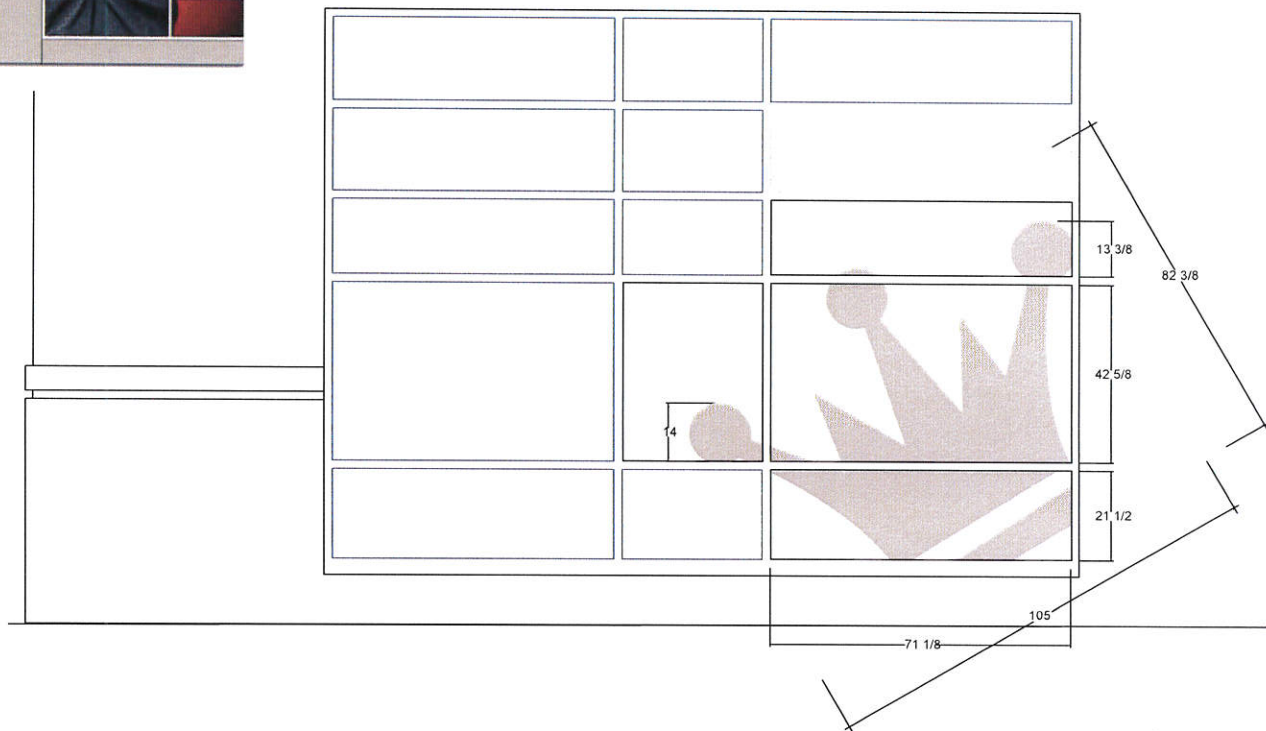
DATE 03-08-16

DRAWING 06178-05

WINDOW GRAPHIC SPECIFICATIONS :



Scope of Work : Cut and apply (1) one "Crown" window graphic as shown.
applied 2nd surface vinyl, Gerber "Frosted Crystal" (210-324)



Listed
Copyright

JNB SIGNS INCORPORATED 1221 Venture Drive, Suite 1, Janesville, WI 53546 Phone : 1-800-243-7997 Fax : 1-608-754-7822
This original and unpublished design is copyrighted and the exclusive property of JNB Signs, Inc. and is not to be exhibited, copied or reproduced in whole or in part without written permission. All sizes and dimensions are shown for clients conception of a current project and are not to be understood as being exact size or exact scale.
JNB Signs is not responsible for differences in colors between this print and final product, we will attempt to match colors as closely as possible but final choices will be made by using vinyl and paint samples when possible, but we cannot guarantee exact color matches due to differing surfaces, materials and paints being applied.

CLIENT Toppers Pizza

SALESMAN Kevin Cook

CUSTOMERS SIGNATURE X _____ DATE

JOB SITE Milwaukee, WI

ARTIST Mike

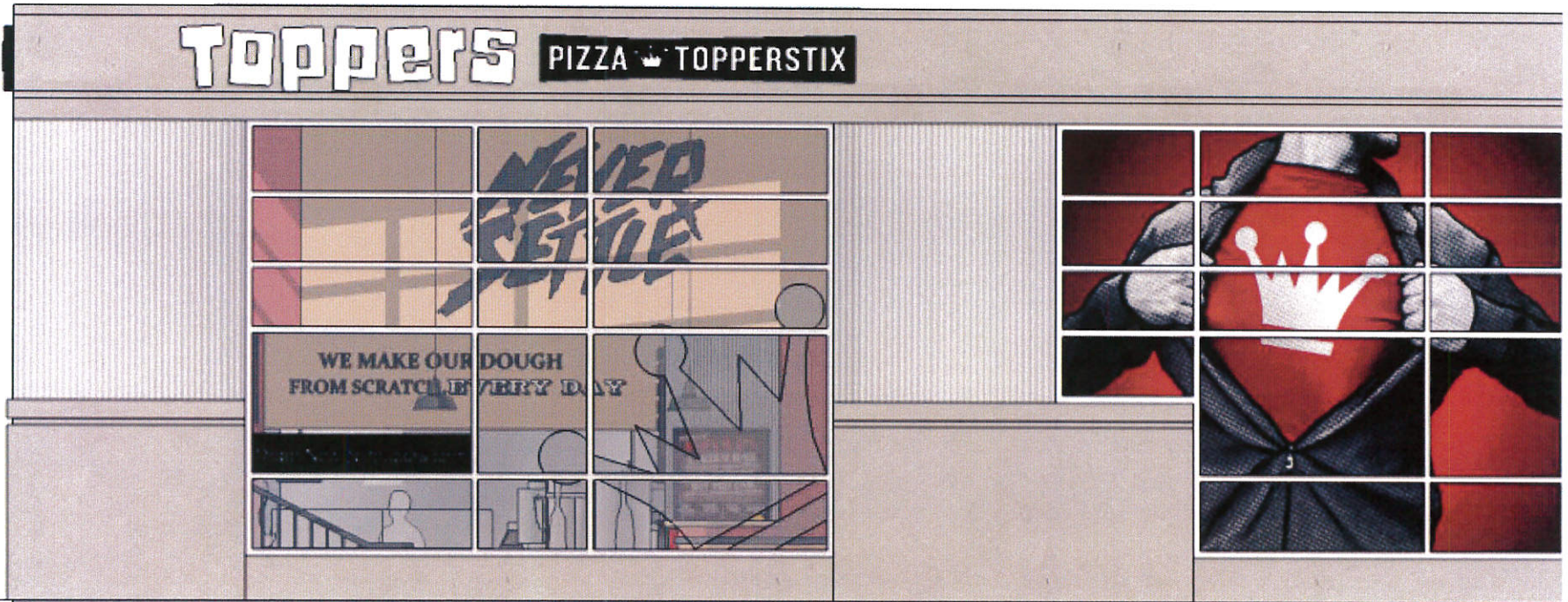
DATE 03-11-16

DRAWING 06178-12

HERO GRAPHIC SPECIFICATIONS :

Scope of Work : Manufacture and install (1) 143.5 W x 129 H vinyl window graphic as shown.

Graphic : Applied 1st surface vinyl, digital print.



Listed
Copyright

JNB SIGNS INCORPORATED 1221 Venture Drive, Suite 1, Janesville, WI 53546 Phone : 1-800-243-7997 Fax : 1-608-754-7822

This original and unpublished design is copyrighted and the exclusive property of JNB Signs, Inc. and is not to be exhibited, copied or reproduced in whole or in part without written permission. All sizes and dimensions are shown for clients conception of a current project and are not to be understood as being exact size or exact scale.

JNB Signs is not responsible for differences in colors between this print and final product, we will attempt to match colors as closely as possible but final choices will be made by using vinyl and paint samples when possible, but we cannot guarantee exact color matches due to differing surfaces, materials and paints being applied.

CLIENT Toppers Pizza

SALESMAN Kevin Cook

CUSTOMERS SIGNATURE X _____ DATE

JOB SITE Milwaukee, WI

ARTIST Mike

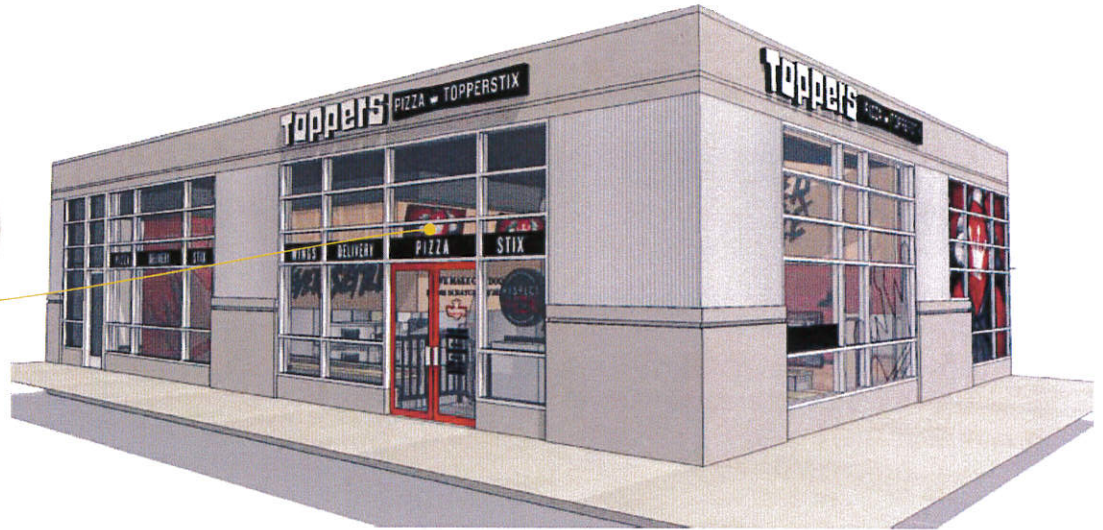
DATE 03-08-16

DRAWING 06178-07

WINDOW SIGN SPECIFICATIONS :

Scope of Work : Manufacture and install seven vinyl graphics and white address to windows as shown. Cut to fit on location

Graphics : (2nd surface application) Opaque black vinyl to have copy reverse weeded from panel, panel applied to windows and 2nd layer of opaque white vinyl copy applied (1/8" overlap for shrinkage)



Graphics in Place



JNB SIGNS INCORPORATED 1921 Venture Drive, Suite 1, Janesville, WI 53546 Phone : 1-800-243-7997 Fax : 1-608-754-7822

This original and unpublished design is copyrighted and the exclusive property of JNB Signs, Inc. and is not to be exhibited, copied or reproduced in whole or in part without written permission. All sizes and dimensions are shown for clients conception of a current project and are not to be understood as being exact size or exact scale.

JNB Signs is not responsible for differences in colors between this print and final product, we will attempt to match colors as closely as possible but final choices will be made by using vinyl and paint samples when possible, but we cannot guarantee exact color matches due to differing surfaces, materials and paints being applied.

CLIENT Toppers Pizza SALESMAN Kevin Cook CUSTOMERS SIGNATURE X _____ DATE _____

JOB SITE Milwaukee, WI ARTIST Mike DATE 03-09-16 DRAWING 06178-06

© Copyright 