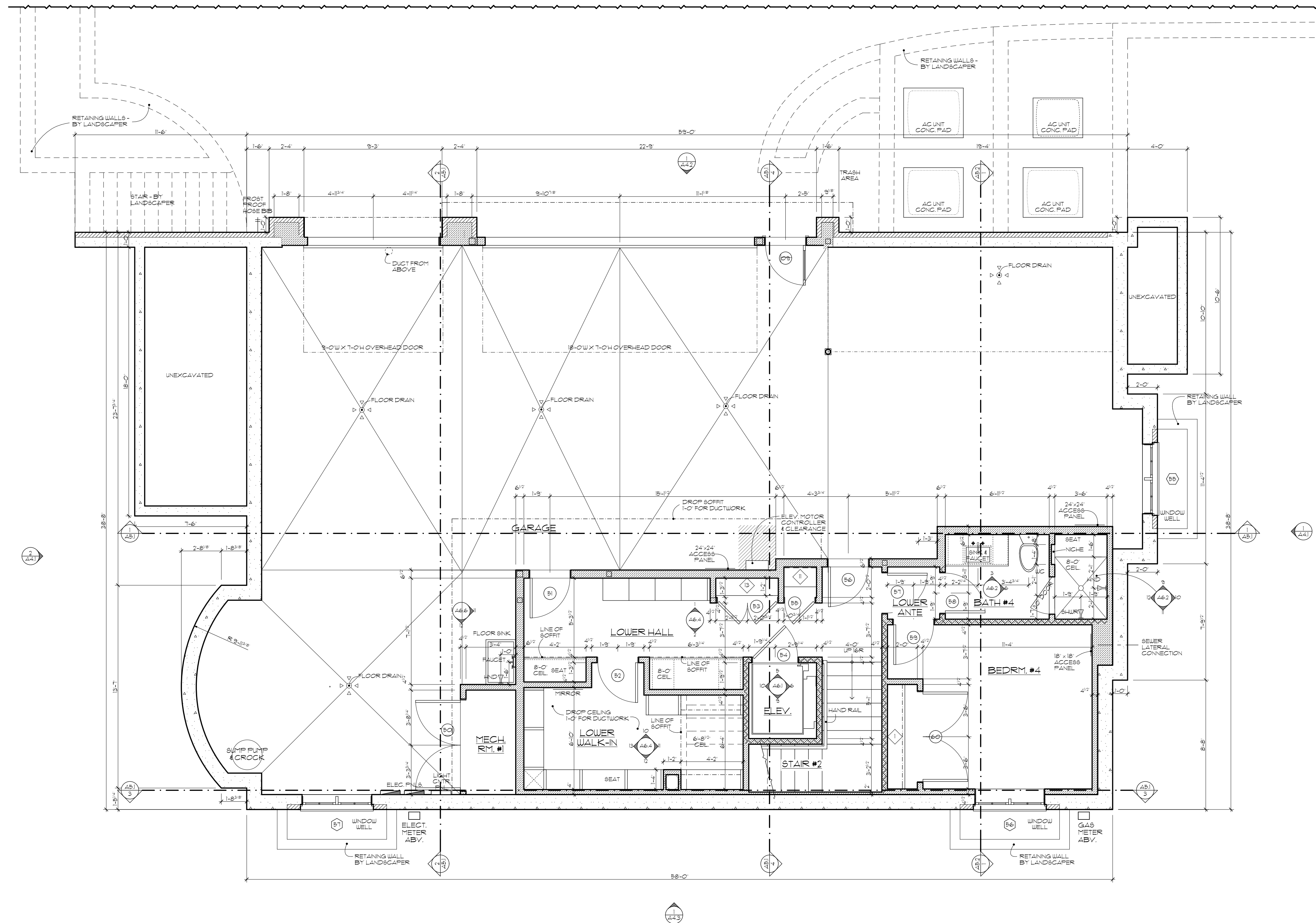
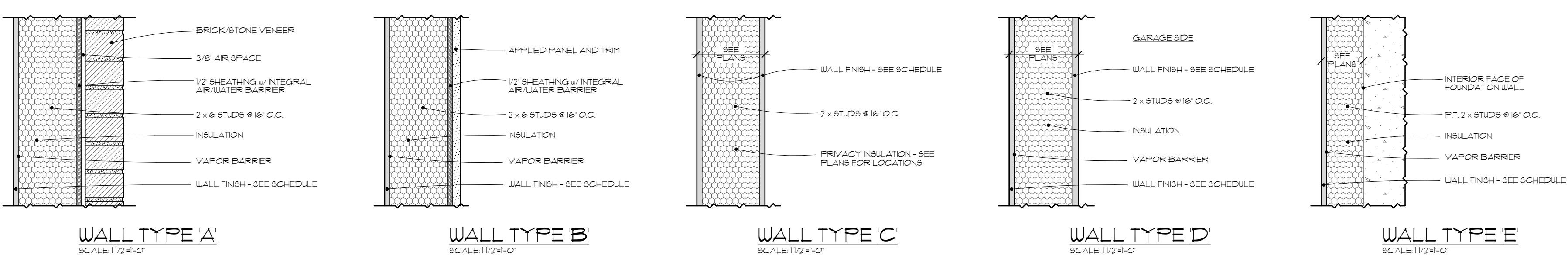




DEEP RIVER PARTNERS



1 LOWER LEVEL FLOOR PLAN
SCALE: 1/4" = 1'-0"



2 WALL TYPES
SCALE: 1/2" = 1'-0"

CLOSET KEY NOTES

GENERAL NOTES:
 (A) SHELVES 3/4" OR LONGER TO HAVE 1 x 2 STRIP EN 1/4" FROM FRONT EDGE OF SHELF.
 (B) NOT ALL NOTES MAY BE USED.
 (C) ALL ADJUSTABLE SHELF UNITS TO HAVE EITHER (A) FIXED SHELF AND CLOSET CONDITION TOE KICK AT CARPET FLOORING OR (B) FIXED SHELF AT 18" AFF. AT HARD SURFACE FLOORING. UNLESS NOTED OTHERWISE ON ELEVATED DETAILS. SEE CLOSET CONDITION TOE KICK DETAIL.

1	POLE # 8-6" AFF. w/ 1/4" HOOKSTRIP 1/4" DEEP SHELF ABOVE METAL SUPPORTS OR DIVIDER	2	1 x 4 HOOKSTRIP # 8-6" AFF.
3	6" DEEP INT. FIXED TOP SHELF # 1'-0" AFF. w/ FIVE (5) ADJ. SHELVES AND FIXED BOTTOM SHELF. SEE GENERAL NOTES.	9	FIVE (5) FIXED SHELVES ON 1 x 2 CLEATS 18" O.C. 18" AFF. SEE PLAN FOR DEPTH.
4	12" DEEP INT. FIXED TOP SHELF # 1'-0" AFF. w/ FIVE (5) ADJ. SHELVES AND FIXED BOTTOM SHELF. SEE GENERAL NOTES.	31	TWO (2) ADJ. POLES AND ONE (1) 6" DEEP ADJ. SHELF w/ VERTICAL DIVIDERS ENDS TO 1'-0" AFF. w/ TOE KICK AND FIXED TOP PREP. UNIT FOR ALL SHELVES.
6	18" DEEP INT. FIXED TOP SHELF # 1'-0" AFF. w/ FIVE (5) ADJ. SHELVES AND FIXED BOTTOM SHELF. SEE GENERAL NOTES.	32	ONE (1) ADJ. POLE AND TWO (2) 6" DEEP ADJ. SHELVES w/ VERT. DIVIDERS ENDS TO 1'-0" AFF. w/ TOE KICK AND FIXED TOP PREP. UNIT FOR ALL SHELVES.
7	FIVE (5) 1/2" DEEP FIXED SHELVES ON 1 x 2 CLEATS 15" O.C. 18" AFF. w/ 1/2" SQUARE SUPPORTS	41	DRAWER BANK w/ FIXED SHELF AND TOP FOUR (4) ADJUSTABLE SHELVES w/ VERTICAL SIDES TO 1'-0" AFF. DEPTH AND WIDTH VARY - SEE PLAN.
8	FIVE (5) 18" DEEP FIXED SHELVES ON 1 x 2 CLEATS 15" O.C. 18" AFF.		
9	1 x 4 HOOKSTRIP # 8-6" AFF. w/ 1/2" DEEP FIXED SHELF ABOVE		

NOTE

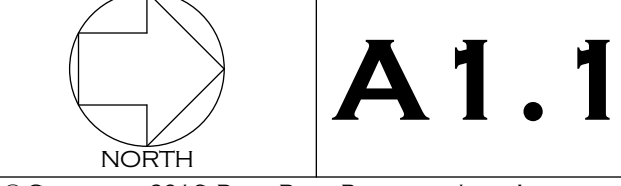
ALTHOUGH EVERY EFFORT HAS BEEN MADE IN PREPARING THESE CONTRACT DOCUMENTS AND CHECKING THEM FOR ACCURACY, THE CONTRACTORS MUST CHECK ALL DETAILS AND DIMENSIONS AND BE RESPONSIBLE FOR SAME. THE CONTRACTORS SHALL BE RESPONSIBLE FOR MAKING SURE THAT ALL WORK IS DONE IN ACCORDANCE WITH ALL STATE AND LOCAL CODES. THE CONTRACT DOCUMENTS UTILIZE A PROCESS CALLED FREE DESIGN OR DESIGN/BUILD FOR ROOF WINDOW PLUMBING ELECTRICAL HVAC DETAILS AND AS DESIGNATED IN THE SPECIFICATIONS TO BE COMPLETED ON A DESIGN/BUILD BASIS. THIS MEANS THAT THE CONTRACT DOCUMENTS DO NOT INCLUDE ALL REQUIRED DETAILS AND THAT THE CONTRACTORS SHALL USING THEIR OWN STAFF OR QUALIFIED SUBCONTRACTORS DESIGN AND BUILD THE FREE DESIGN AND DESIGN/BUILD PORTIONS OF THE WORK. THE CLIENT IS DIRECTLY CONTRACTING WITH THE CONTRACTORS AND THEREFORE THE CLIENT AND THE CONTRACTORS ARE ASSUMING THE DESIGN AND BUILD RESPONSIBILITY FOR THE FREE DESIGN AND DESIGN/BUILD PORTIONS OF THE PROJECT. DEEP RIVER PARTNERS LTD IS NOT RESPONSIBLE FOR INSPECTING ANY ASPECT OF THE CONTRACTORS' WORK OR FOR OBSERVATION OF THE CONTRACTORS WORK FOR COMPLIANCE WITH THE CONTRACT DOCUMENTS.

DEEP RIVER PARTNERS, LTD.
 338 N. MILWAUKEE STREET
 SUITE #505
 MILWAUKEE, WI 53202
 TELL 414-276-8550
 FAX 414-276-8560

Description	Date
REDLINE ISSUE	3/17/2016
1/4' OWNER APPROVAL	7/6/2015
HISTORICAL SUBMITTAL	5/5/2016
INTERIOR ELEVATIONS	12/17/2015
A/V REVIEW ISSUE	
BID ISSUE	
PERMIT ISSUE	
CONSTRUCTION ISSUE	
ARCHITECTURAL REVIEW	

1501
LAFAYETTE TOWN HOME
 2115 E. LAFAYETTE PLACE
 MILWAUKEE, WISCONSIN
 53202

LOWER LEVEL FLOOR PLAN



© COPYRIGHT 2016 DEEP RIVER PARTNERS, LTD. ALL RIGHTS RESERVED. THIS DOCUMENT, IDEAS AND DESIGN INCORPORATED HEREIN ARE THE PROPERTY OF DEEP RIVER PARTNERS, LTD. AND ARE NOT TO BE USED WHOLE OR IN PART WITHOUT THE WRITTEN CONSENT OF DEEP RIVER PARTNERS, LTD.