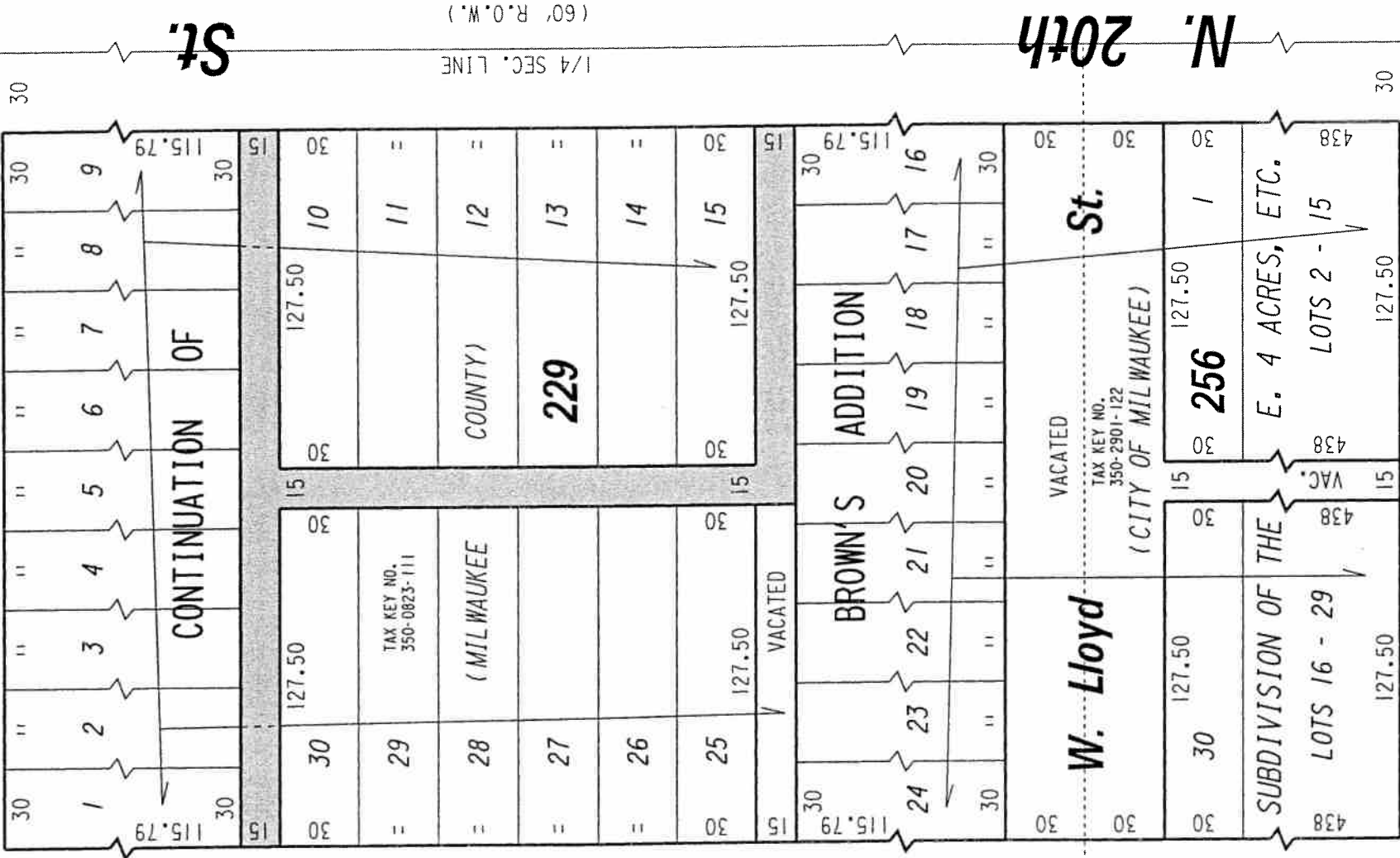
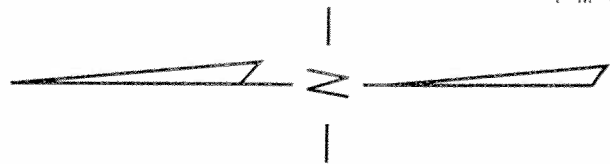


W. Garfield Ave.

(60' R.O.W.)



St.



(60' R.O.W.)

St.

1/4 SEC. LINE
(60' R.O.W.)

N. 20th

N. 21st

W. Lloyd

VACATED

TAX KEY NO.
350-2901-122
(CITY OF MILWAUKEE)

St.

W. Brown

St.

PUBLIC ALLEYS
PROPOSED TO
BE VACATED



EXHIBIT "A" FILE NO. 090886

INFRASTRUCTURE SERVICES DIVISION

MILWAUKEE, WISCONSIN

ASSIGNED TO: W.E. FUCHS

DRAWN BY: W.E.F.

PROJECT/GRANT NO.: WK52337288

APPROVED BY:

CH'K'D. BY: W.E. FUCHS

DATE: JAN. 26, 2010

SCALE: 1" = 60'

Marcia Cornell

CENTRAL DRAFTING & RECORDS MANAGER

CITY ENGINEER