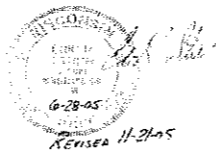


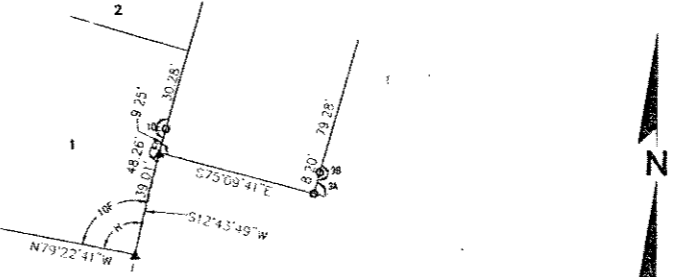
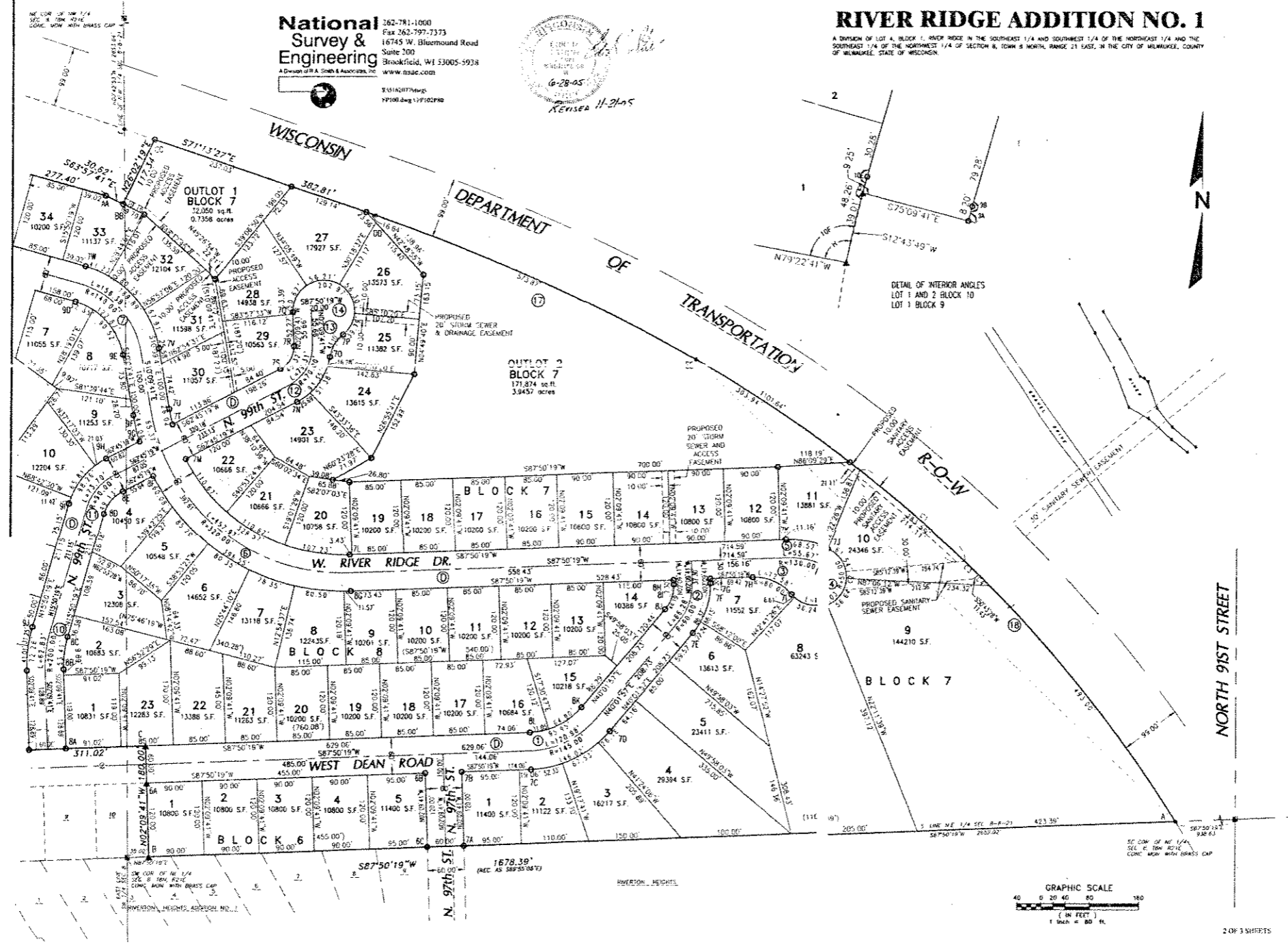
**National Survey & Engineering**  
 A Division of H.A. Smith & Associates, Inc.  
 262-781-1000  
 Fax 262-797-7373  
 16745 W. Bluemound Road  
 Suite 200  
 Brookfield, WI 53005-5938  
 www.nseae.com

3/14/2005  
 77100.dwg 1/2/05/05



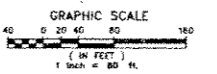
# RIVER RIDGE ADDITION NO. 1

A DIVISION OF LOT 4, BLOCK 1, RIVER RIDGE IN THE SOUTHWEST 1/4 AND SOUTHWEST 1/4 OF THE NORTHEAST 1/4 AND THE SOUTHWEST 1/4 OF THE NORTHWEST 1/4 OF SECTION 8, TOWN 8 NORTH, RANGE 21 EAST, IN THE CITY OF MILWAUKEE, COUNTY OF MILWAUKEE, STATE OF WISCONSIN.



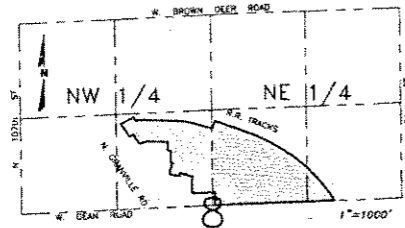
### INTERIOR ANGLES

A	45°57'54.5"
B	35°00'00"
C	225°30'00"
D	307°00'00"
E	166°17'56"
F	286°47'44"
G	272°30'00"
H	12°00'00"
I	102°47'00"
J	162°30'00"
K	272°30'00"
L	36°11'58"
M	476°26'00"
N	90°00'00"
O	270°00'00"
P	304°14'52"
Q	102°48'28"
R	270°00'00"
S	90°00'00"
T	83°37'54"
U	90°00'00"
V	270°00'00"
W	149°27'25"
X	127°35'00"
Y	174°19'00"
Z	174°35'00"
AA	168°40'00"
BB	270°00'00"
CC	97°15'46"
DD	174°41'30"
EE	160°27'00"
FF	90°00'00"
GG	90°00'00"
HH	203°54'11"
II	203°54'11"
JJ	203°54'11"
KK	203°54'11"
LL	203°54'11"
MM	203°54'11"
NN	203°54'11"
OO	203°54'11"
PP	203°54'11"
QQ	203°54'11"
RR	203°54'11"
SS	203°54'11"
TT	203°54'11"
UU	203°54'11"
VV	203°54'11"
WW	203°54'11"
XX	203°54'11"
YY	203°54'11"
ZZ	203°54'11"
AAA	203°54'11"
BBB	203°54'11"
CCC	203°54'11"
DDD	203°54'11"
EEE	203°54'11"
FFF	203°54'11"
GGG	203°54'11"
HHH	203°54'11"
III	203°54'11"
JJJ	203°54'11"
KKK	203°54'11"
LLL	203°54'11"
MMM	203°54'11"
NNN	203°54'11"
OOO	203°54'11"
PPP	203°54'11"
QQQ	203°54'11"
RRR	203°54'11"
SSS	203°54'11"
TTT	203°54'11"
UUU	203°54'11"
VVV	203°54'11"
WWW	203°54'11"
XXX	203°54'11"
YYY	203°54'11"
ZZZ	203°54'11"
AAA	203°54'11"
BBB	203°54'11"
CCC	203°54'11"
DDD	203°54'11"
EEE	203°54'11"
FFF	203°54'11"
GGG	203°54'11"
HHH	203°54'11"
III	203°54'11"
JJJ	203°54'11"
KKK	203°54'11"
LLL	203°54'11"
MMM	203°54'11"
NNN	203°54'11"
OOO	203°54'11"
PPP	203°54'11"
QQQ	203°54'11"
RRR	203°54'11"
SSS	203°54'11"
TTT	203°54'11"
UUU	203°54'11"
VVV	203°54'11"
WWW	203°54'11"
XXX	203°54'11"
YYY	203°54'11"
ZZZ	203°54'11"



# RIVER RIDGE ADDITION NO. 1

A DIVISION OF LOT 4, BLOCK 1, RIVER RIDGE IN THE SOUTHEAST 1/4 AND SOUTHWEST 1/4 OF THE NORTHEAST 1/4 AND THE SOUTHWEST 1/4 OF THE NORTHWEST 1/4 OF SECTION 8, TOWN 8 NORTH, RANGE 21 EAST, IN THE CITY OF MILWAUKEE, COUNTY OF MILWAUKEE, STATE OF WISCONSIN.



VICINITY MAP  
NW 1/4 & NE 1/4 OF SEC. 8  
T 8 N, R 21 E.

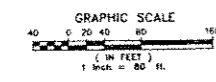
APPROVING AGENCIES  
CITY OF MILWAUKEE

### NOTES

1. ALL LOTS TO BE SERVED WITH SANITARY SEWER AND WATERMAIN.
2. THIS SUBDIVISION CONTAINS 44,712 ACRES.
3. THIS SUBDIVISION CONTAINS 104 LOTS AND 2 OUTLOTS.
4. EASEMENTS SE-2753, SE-2754 AND THE 30' TEMPORARY ACCESS EASEMENT ALONGS LOTS 44 AND 45 SHALL BE RELEASED UPON THE CITY OF MILWAUKEE COMMON COUNCIL APPROVAL. EASEMENTS SE-2753 AND SE-2754 TO BE RELEASED BY SEPARATE DOCUMENT AFTER REQUIRED STORM SEWERS HAVE BEEN INSTALLED AND ARE OPERATIONAL.
5. EACH INDIVIDUAL LOT OWNER SHALL HAVE AN UNDIVIDABLE FRACTIONAL OWNERSHIP IN OUTLOT 1, BLOCK 1, IN RIVER RIDGE, AND OUTLOTS 1 AND 2, BLOCK 7, IN RIVER RIDGE ADDITION NO. 1, MILWAUKEE COUNTY OR THE CITY OF MILWAUKEE SHALL NOT BE LIABLE FOR ANY FEES OR SPECIAL ASSESSMENTS IN THE EVENT THEY BECOME AN OWNER OF ANY LOTS IN THE SUBDIVISION FOR THE REASON OF TAX DEFICIENCY.

### LEGEND

- INDICATES 1.315" OUTSIDE DIAMETER IRON PIPE FOUND.
- INDICATES 1.27" REBAR, WT. 4.303 LBS. PER LINEAL FOOT, 18" IN LENGTH FOUND.
- INDICATES 1.23" REBAR, WT. 4.303 LBS. PER LINEAL FOOT, 18" IN LENGTH SET.
- ALL OTHER LOT CORNERS HAVE 1.315" OUTSIDE DIAMETER 4" IRON PIPE, WT. 1.98 LBS. PER LINEAL FOOT, SET UNLESS OTHERWISE NOTED.
- ALL DIMENSIONS MEASURED AND SHOWN TO THE NEAREST HUNDREDTH OF A FOOT.
- PLAT REFERENCED TO THE SOUTH LINE OF THE NW 1/4 OF SECTION 8, TOWN 8 NORTH, RANGE 21 EAST BEARS N67°40'31"E.
- DEDICATED TO THE CITY OF MILWAUKEE FOR PUBLIC STREET PURPOSES.

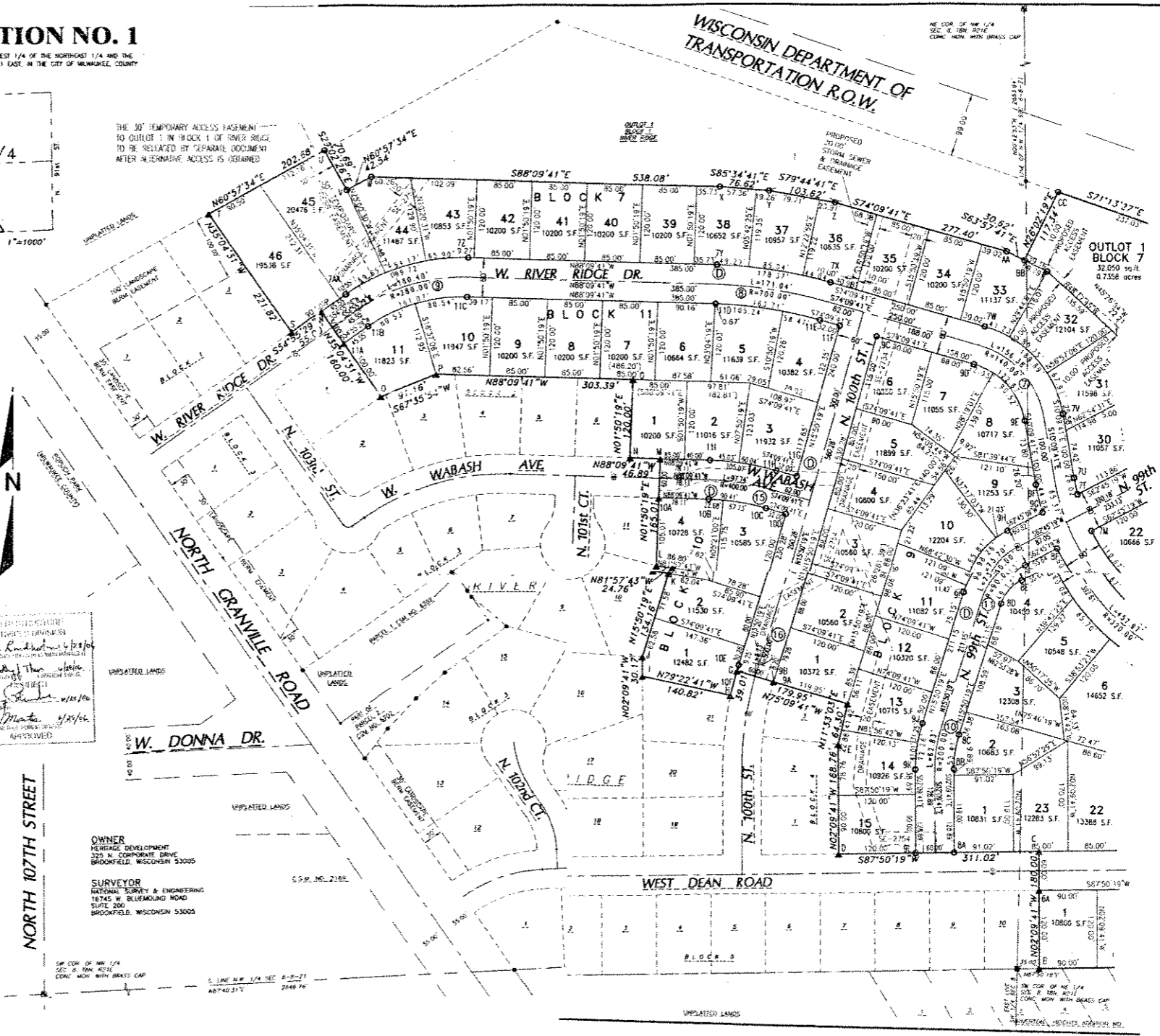


**National Survey & Engineering**  
262-781-1000  
Fax 262-797-7373  
16745 W. Bluemound Road  
Suite 206  
Brookfield, WI 53005-5938  
www.nseco.com

5/16/2007 dwg  
11:06 dwg 1/10/10 PRD

1 OF 3 SHEETS

THE 30' TEMPORARY ACCESS EASEMENT TO OUTLOT 1 IN BLOCK 1 OF RIVER RIDGE TO BE RELEASED BY SEPARATE DOCUMENT AFTER ALTERNATIVE ACCESS IS OBTAINED.



OWNER  
HERITAGE DEVELOPMENT  
325 N. CORPORATE DRIVE  
BROOKFIELD, WISCONSIN 53005

SURVEYOR  
NATIONAL SURVEY & ENGINEERING  
16745 W. BLUEMOUND ROAD  
SUITE 206  
BROOKFIELD, WISCONSIN 53005

SW COR. OF NW 1/4  
SEC. 8, TOWN 8N  
RANGE 21E, COUNTY OF MILWAUKEE, WISCONSIN

S. 1/4 NW 1/4 SEC. 8, TOWN 8N, RANGE 21E  
A6740.517 2048 76'

WISCONSIN DEPARTMENT OF  
TRANSPORTATION R.O.W.

NE COR. OF NW 1/4  
SEC. 8, TOWN 8N  
RANGE 21E, COUNTY OF MILWAUKEE, WISCONSIN

OUTLOT 1  
BLOCK 7  
32,050 sq. ft.  
0.7356 acres

SW COR. OF NW 1/4  
SEC. 8, TOWN 8N  
RANGE 21E, COUNTY OF MILWAUKEE, WISCONSIN