

N.E. 8-6-22
ATLAS P. 498

W. HAYES 498 AVE.

498-22

SCALE 80 FT. = 1 INCH



2400 2402	96 498-0501	100 100	80 60-0558	2401
*2404	-0502-100	2	59	2403
*2408-2408A *2408B	-0503	3	58-0556	2411 PL.
*2412-12A	-0504	4	57-0555	2415
ST. 2414	-0505	5	56-0554	2417
*2416-16A	-0506	6	55-0553	2421
2420	-0507	7	54-0552	2425-25A
*2424-24B	-0508	8	53-0551	2427
*2428-28A	-0509	9	52-0550	2431
2430 2432	-0510	10	51-0549	2435
2434	-0511	11	50-0548	*2439-39A
*2436-36A *2436B-36C	-0512	12	49-0547	*2441-41A
2442	-0513	13	48-0546	2445
2444	-0514	14	47-0545	*2449-49A
2446	-0515	15	46-0544	*2451-51A
2452	-0516	16	45-0543	2455
*2454-54A	-0517	17	44-0542	*2457-57A
2458	-0518	18	43-0541	*2463-63A
2460	-0519	19	42-0540	2465
2464	-0520	20	41-0539	*2467
*2468-68A	-0521	21	40-0538	*2471-71A
*2472-72A	-0522	22	39-0537	*2475-75A
2474-74A	-0523	23	38-0536	2479
2480	-0524	24	37-0535	2481
2484	-0525	25	36-0534	*2485-85A
		26	35-0533	2489
		27	34-0532	*2493
		28	33-0531	
		29	32-0530	
		30	31-0529	
		31	30-0528	
		32	29-0527	
		33	28-0526	

DR. E. CHASE'S SUBD. NO. 2

S. 6TH

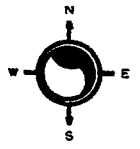
S. 5TH

MICROFILMED 3-19-79

572
574
W. ARTHUR
562
564
568
560
558
554
556
550
AVE.

NW 17-7-22 312 & 313
 ATLAS P. 312
 NE 17-7-22
 ATLAS P. 313

312-03
 SCALE 1" = 80'

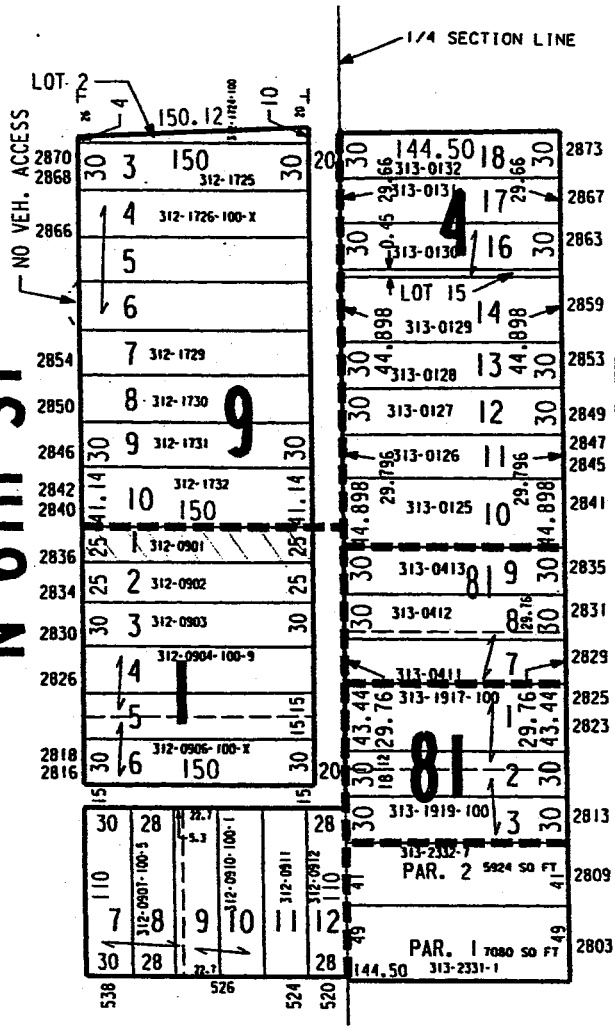


W LOCUST ST

JOY'S J. SAM
 RINDSKOPF'S &
 CHAS HARPKE'S
 SUBDIVISION

FIELD'S SUBDIVISION

N 6TH ST



ASSESSMENT
 SUBDIVISION
 NO. 28

H. W.
 BENJAMIN'S
 SUBDIVISION

C.S. MAP SUBDIVISION
 NO 6526 OF LOT "I"

W HADLEY ST

SW 08-7-22

ATLAS P. 283

283

283-05

SCALE 1" = 100'

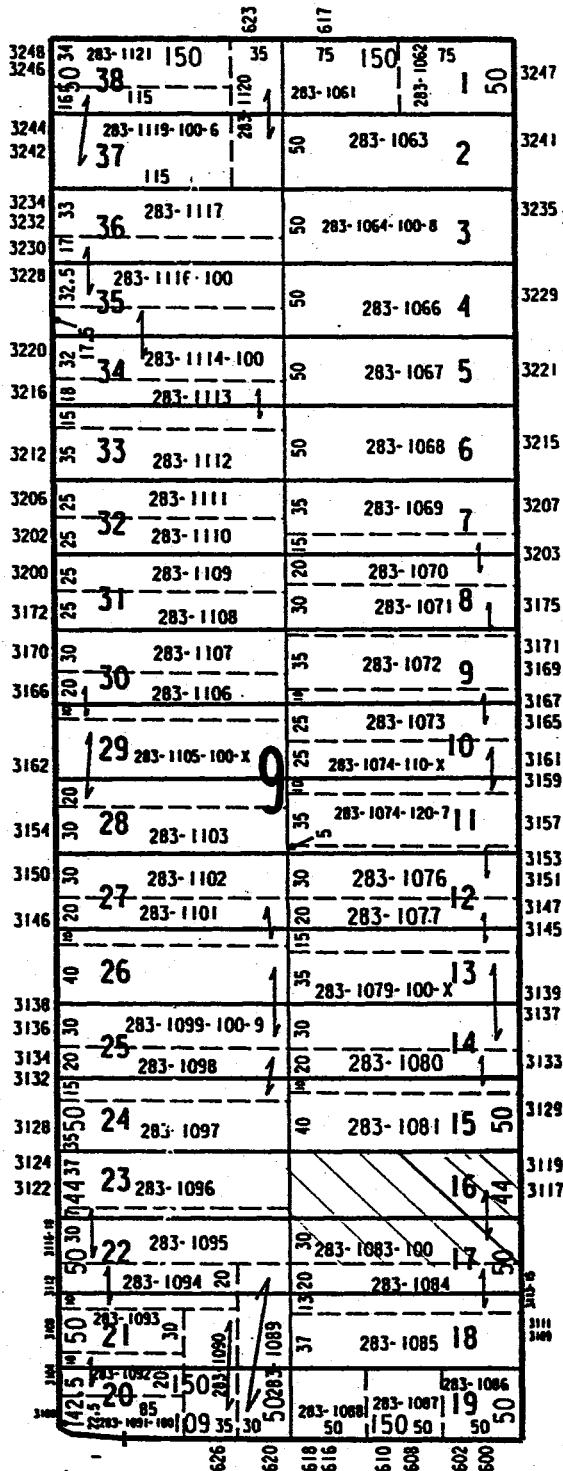
PEIRCE & DAVIS' ADD'N.

W RING ST



N 7TH ST

N 6TH ST



W RIRIE ST

08-21-98

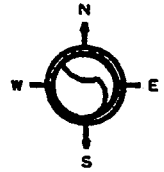
SW 08-7-22

ATLAS P. 283

283

283-15

SCALE 1" = 80'

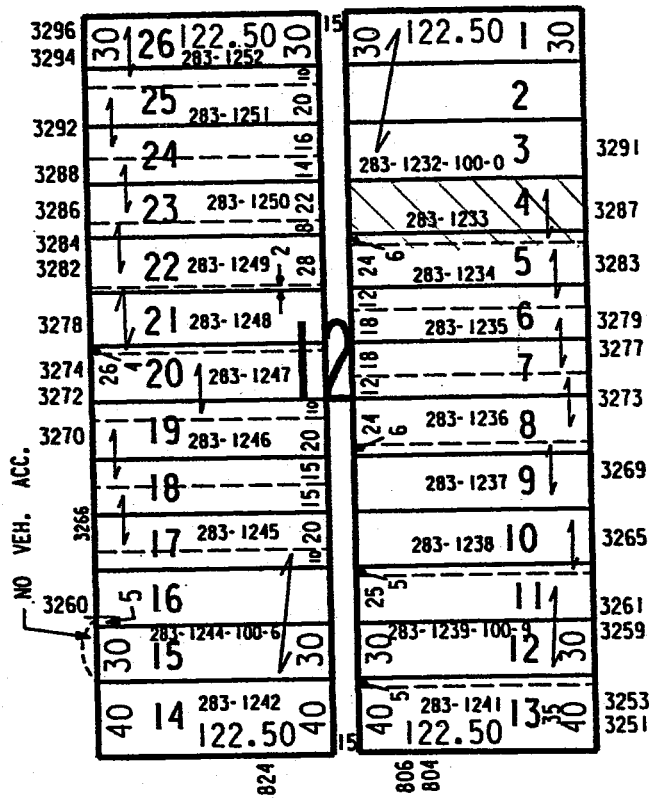


PEIRCE & DAVIS' ADD'N NO. 3

W CONCORDIA AV

N 9TH ST

N 8TH ST



W RING ST

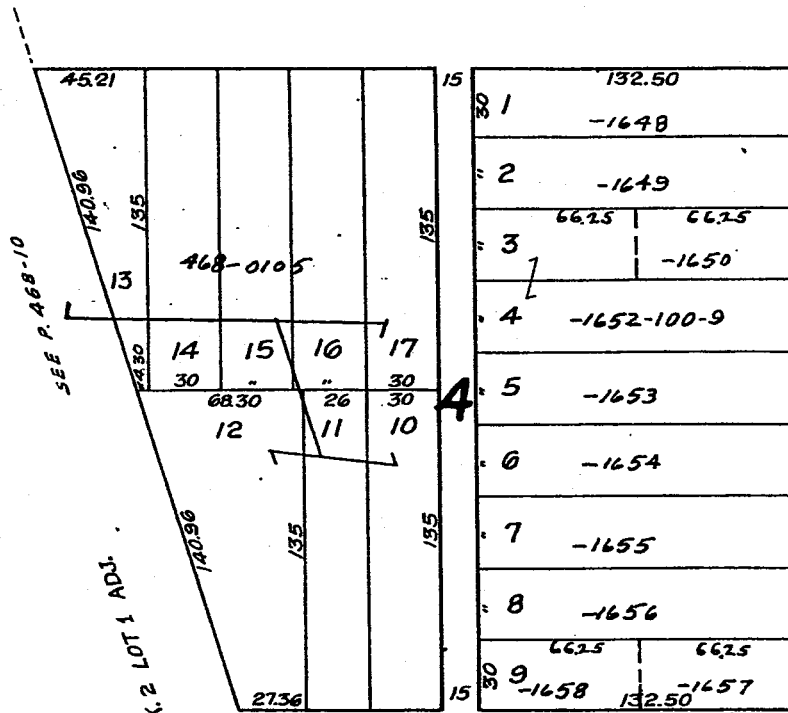
S.W. 5-6-22
ATLAS R 468

468

468-09

W. ROGERS
839 829

ST.



2001

2005

2009 **ST.**

2013

* 2019-19A FRONT
* 2019 B REAR

2023

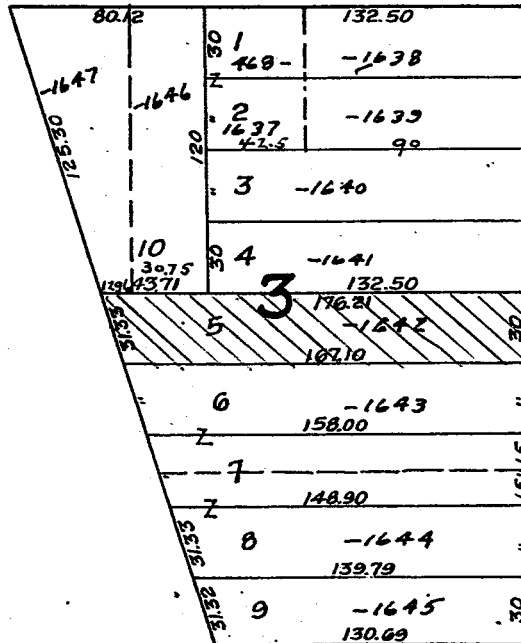
2025

2031

2035

WOOTSCH'S SUBD.

826 828 824 820 822 814 815 814 815
W. ALMA ST. 60



2045

2051

2055

2059

2063

2065
2067 **5.8TH**

2071

2077
2079

W. BECHER ST.

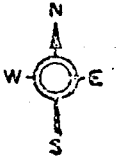
50-87

N.W. 17-6-22
ATLAS P. 536

536
J. S. STROZYK CO'S. SUBD.

536-25

W. OKLAHOMA AVE.
1133 1129 1125 1123 1119 1115 1107 1103



ST.

ST.

120	120	120	120	120	120	120
8	7	6	5	4	3	2
536-1407	-1406	-1405	-1404	-1403	-1402	536-1401
32	40	40	40	40	40	32

3118
3124
3130
3134
3140
3142
3144
3146
3150
3156
3156A
S. 12TH 3162
3160
3172

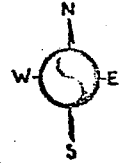
3119
3125
3131-31A
3135
3141
3145
3151
3157
3161
3167
S. 11TH
3175

15	122	20	122	15
9	536-1408	40	30	536-1429
10	-1409	29	-1428	
11	-1410	28	-1427	
12	-1411	27	-1426	
13	-1412	26	-1425	
14	-1413	25	-1424	
15	-1414	24	-1423	
16	-1415	23	-1422	
17	-1416	22	-1421	
18	-1417	21	-1420	
19	536-1418	20	536-1419	
122		122		

W. EUCLID AVE.

MICROFILMED 7-23-67

9



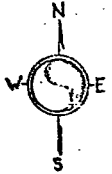
W. KEEFE AVE

3466 3464	2880	127.50 284-2124 50	14	2876	127.50 284-2085	2873	3467
		2		1			
3462 3460		49 -2123		2			3463 3461
		2		3			
3456		48 -2122		4			3457 3455
		2		5			
3452		47 -2121		6			3451 3449
		2		7			
3448 3446		46 -2120		8			3447 3445
		2		9			
3444 3442		45 -2119		10			3441
		2		11			
3438 3436		44 -2118		12			3437 3435
		2		13			
3434		43 -2117		14			3431 3429
		2		15			
3430 3428		42 -2116		16			3425
		2		17			
3424 3422		41 -2115		18			3421 3419
		2		19			
3420		40 -2114		20			
		2		21			
		39 794-2114		22			
		2		23			
		38 127.50		24			
				25			
				26			
				27			
				28			
				29			
				30			
				31			
				32			
				33			
				34			
				35			
				36			
				37			
				38			
				39			
				40			
				41			
				42			
				43			
				44			
				45			
				46			
				47			
				48			
				49			
				50			
				51			
				52			
				53			
				54			
				55			
				56			
				57			
				58			
				59			
				60			
				61			
				62			
				63			
				64			
				65			
				66			
				67			
				68			
				69			
				70			
				71			
				72			
				73			
				74			
				75			
				76			
				77			
				78			
				79			
				80			
				81			
				82			
				83			
				84			
				85			
				86			
				87			
				88			
				89			
				90			
				91			
				92			
				93			
				94			
				95			
				96			
				97			
				98			
				99			
				100			

S.E. 7-7-22
ATLAS P. 284

Vol. 2 Page 12
(R.P. Houghton's) Subd. into
1 & 5 ACRE LOTS

Vol. 18 Page 10
Littlejohn Heights



W. Ring St.
1421 1413

N. 15TH ST.

N. 14TH ST.

3246	284-0747	15	284-1013	3249
3240	-0748	32	-1014	3243
3236	-0749	32	-1015	3237
3232	-0750	32	4 -1017	3233
3228	-0752	32	5 -1018	3229
3224	-0753	32	6 2 -1019	3225
3218	-0754	32	7 -1020	3221
3214	LOT 19 -0755	LOT 20	8 -1021	3217
3210	-0756	32	9 -1022	3215
3206	-0757	32	10 -1023	3209
3202	-0758	32	11 -1024	3205
3196	284-0759	32	12 -1025	3201
		20	13 284-1026	3193

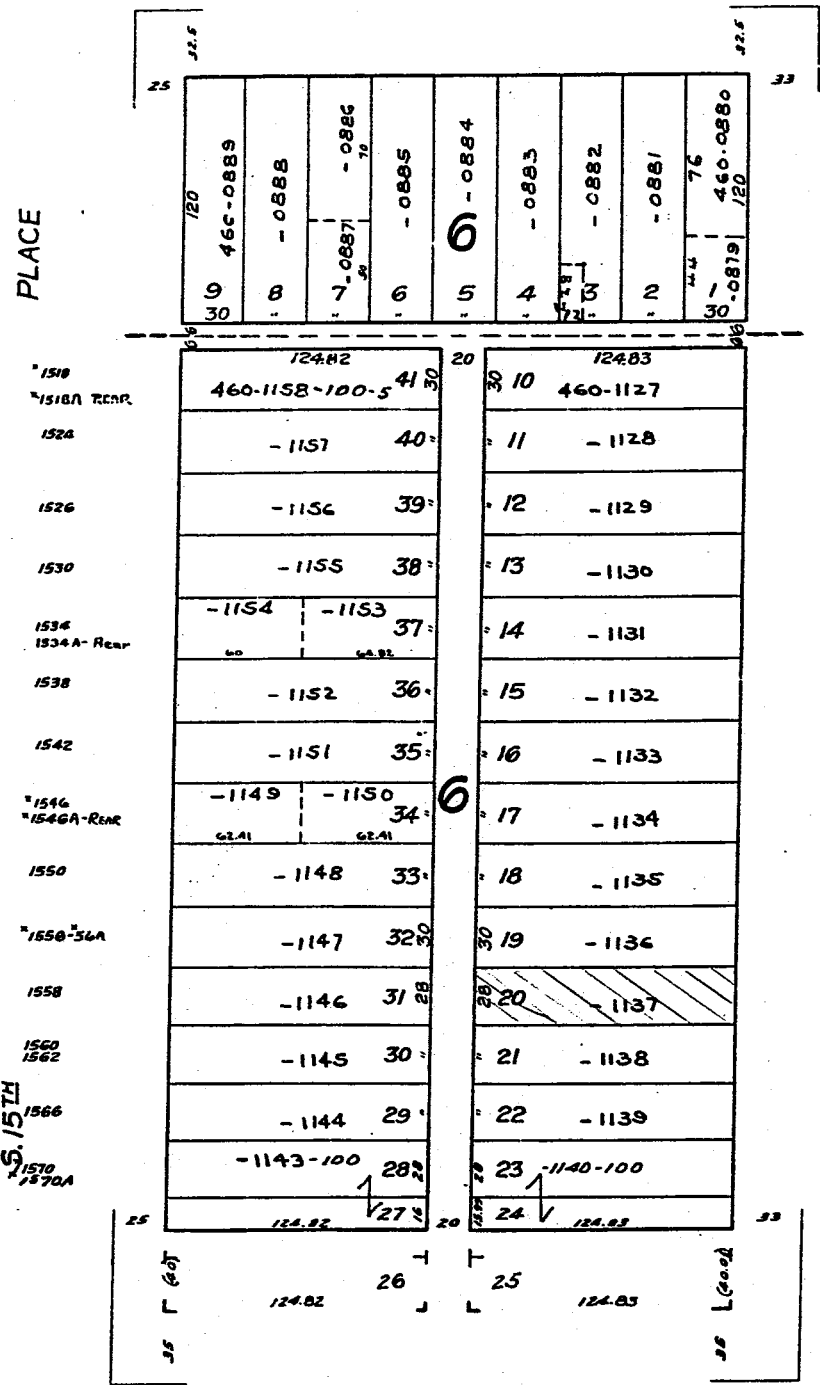
RECORDED S-10-72

N.E. 6-6-22
ATLAS P. 460

D.G. ROGERS & GEO. BURNHAM'S SUBD.
460

460-14

W. ORCHARD ST.
1533A 1529 1525 1523 1519 1515 1509 1505 1501
1533 1525A
REAR



W. LAPHAM BLVD.
D.G. ROGERS & GEO. BURNHAM'S SUBD. No 3

4-3-35

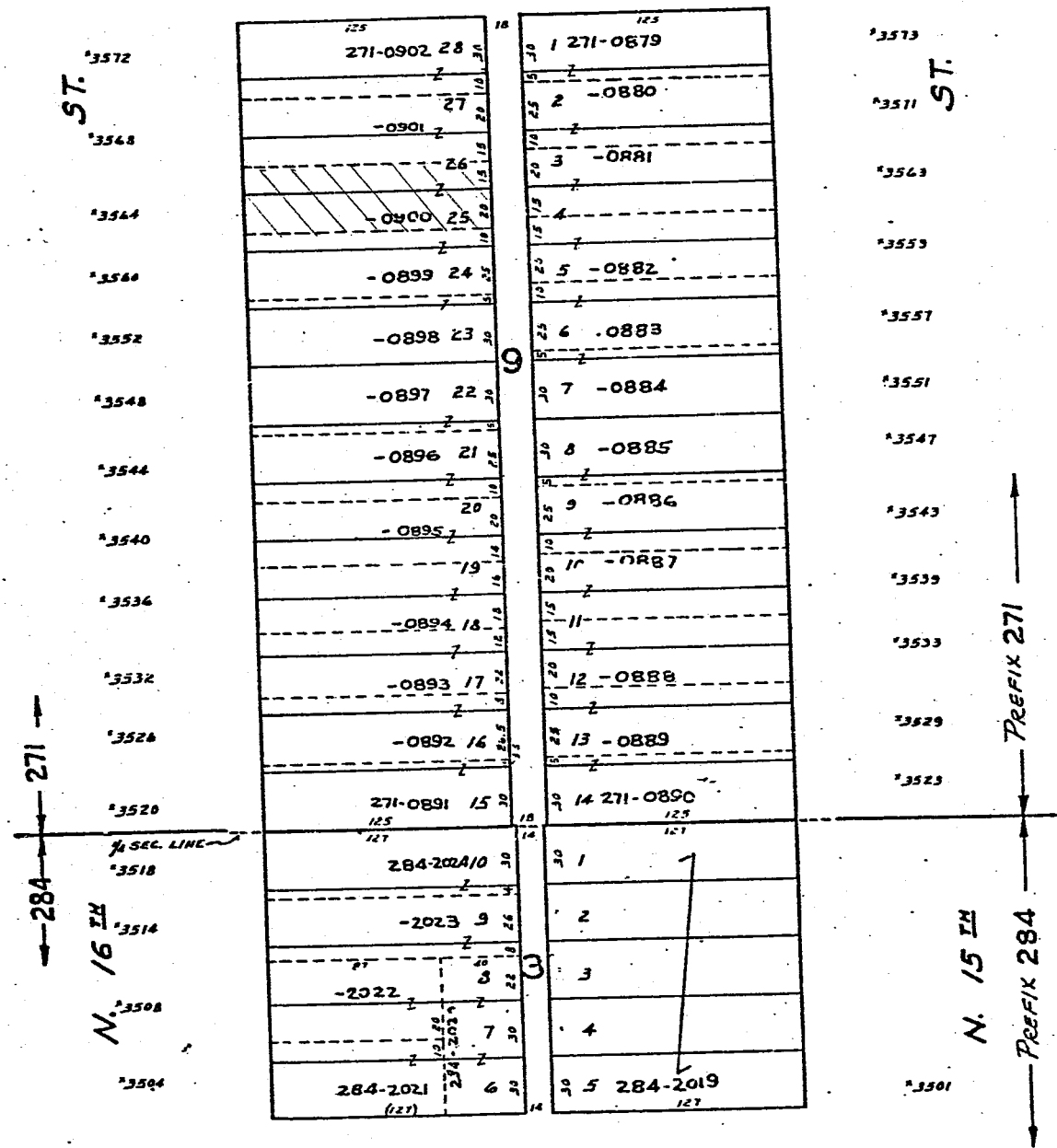
N.E. & S.E. 7-7-22
ATLAS PAGES 271 & 284

271-284

271-15

IRVING PARK
VOL. 16 P. 38
W. FINN

PL.



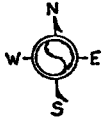
W. KEEFE AVE.
TEUTONIA HEIGHTS
VOL. 9 P. 31

NET-7-22
ATLAS P. 271

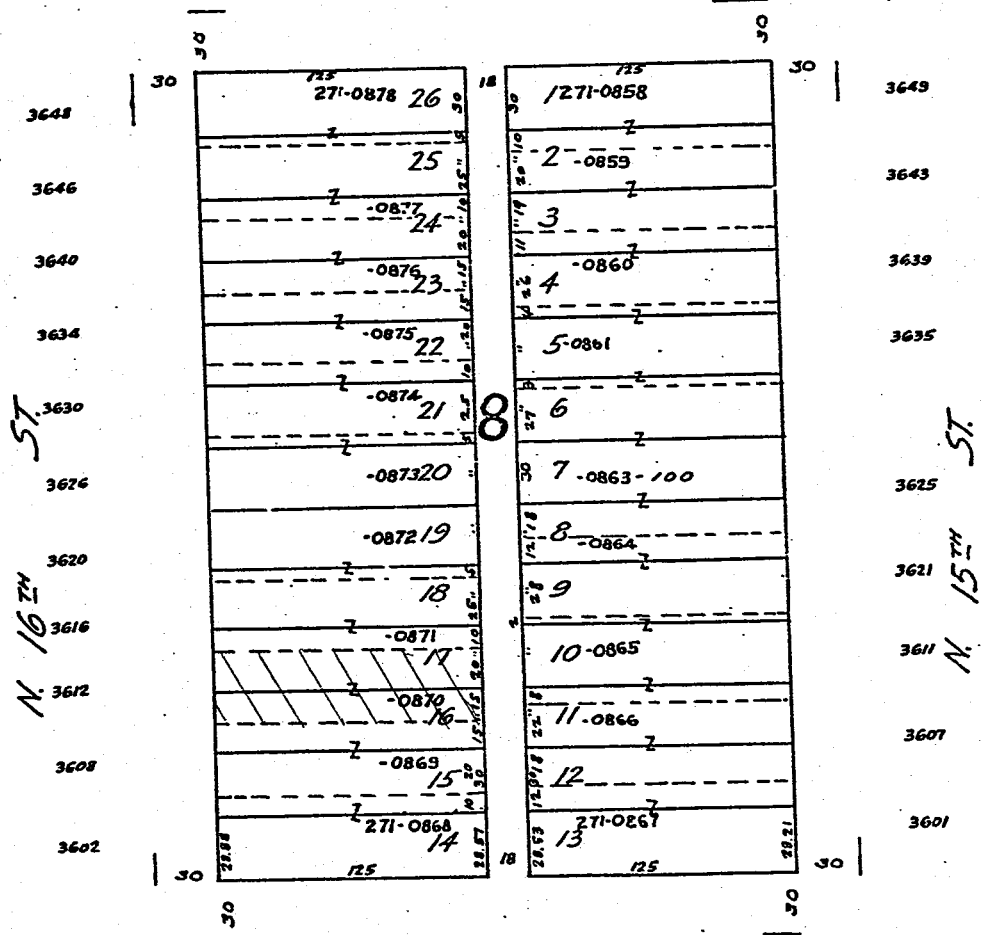
271

271-14

IRVING PARK



W. NASH ST.



2-1-57
MICROFILMED

W. FINN PL.

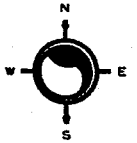
SW 07-7-22

ATLAS P. 285

285

285-02

SCALE 1" = 80'

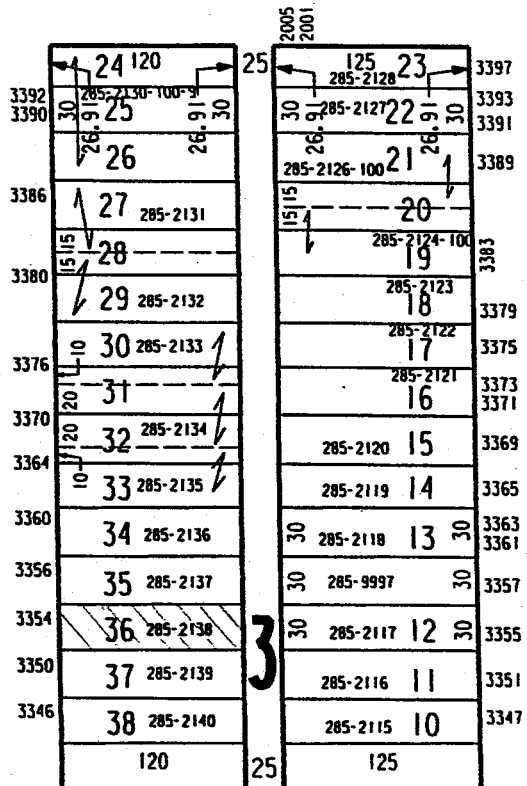


WECHSELBERG'S SUBDIVISION

W TOWNSEND ST

N 21ST ST

N 20TH ST



PAGE 285-03 ADJ.

S.W. 31-8-22
ATLAS P. 206

206

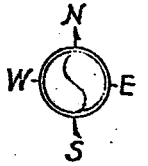
206-25

TAUBERT DEVELOPMENT CO'S. SUBD.

W. FAIRMOUNT

AVE.

*201



*4974	120 206-1316	16	4.482	18	120 1	206-1301	*4969
ST *4968	-1315	15	4.0	40	2	-1302	
*4962	-1314	14			3	-1303	4965 4963
*4956	-1313	13			4	-1304	*4959
*4952	-1312	12		3	5	-1305	*4953
*4946	-1311	11			6	-1306	*4947
*4940	-1310	10			7	-1307	*4941
*4936	-1309	9	4.0		8	-1308	*4937
	120				120		
*4930	206-1613	1	4.578	18	4.578	12	*4331
						206-1624	
*4924	-1614	2	4.2	42	11	-1623	*4925
*4918	-1615	3			10	-1622	*4919
N. 22ND *4912	-1616	4		2	9	-1621	*4915
*4908	-1617	5			8	-1620	*4909
							N. 21ST
*4902	-1618	6	4.2	42	7	-1619	*4901
	120			18	120		

MICROFILMED 11-12-68

W. STARK ST.
WILSON & MEYER'S SUBD. No 1

SW 18-7-22

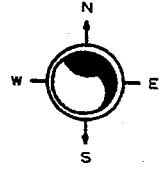
ATLAS P. 325

325

325-10

SCALE 1" = 10'

MANN, BURKE & SOMERS
SUBDIVISION



W CLARKE ST

N 23RD ST

N 22ND ST

2233	2231	2223	2221	2219	2217	2215	2213	2211	2207	2205	2203	2201
30	20	10	6	5	4	3	2	1	30			
26.97	26.97	100	100	14.97	325-0778	325-0777	325-0776	325-0775	325-0774	325-0774	120	30
325-0781	325-0782-100	325-0779-100	325-0779-100	325-0778	325-0777	325-0776	325-0775	325-0774	325-0774	325-0774	120	30
2566	2566	2566	2566	2566	2566	2566	2566	2566	2566	2566	2566	2566
53	20	10	6	5	4	3	2	1	30			
2558	10	126	30	30	126	19	30	2561				
325-0783	325-0783	30	30	325-0793	325-0792	18	2557					
2554	11	325-0784	30	30	325-0792	18	2555					
2550B-REAR	75	51	30	30	325-0791	17	2551					
2550	325-0785	325-0786	30	30	325-0791	17	2551					
2542	13	30	30	30	325-0790	16	2549					
325-0788-100	325-0788-100	30	30	325-0790	16	2547						
2542	14	30	30	30	325-0789	15	2543					
325-0788-100	325-0788-100	30	30	325-0789	15	2543						
2536	12	30	30	30	325-0342	1	2537					
325-0343-100	325-0343-100	30	30	325-0342	1	2537						
2536	13	30	30	30	325-0345	4	2533					
325-0343-100	325-0343-100	30	30	325-0345	4	2533						
2528	16	325-0347-100	30	30	325-0346	5	2529					
325-0347-100	325-0347-100	30	30	325-0346	5	2529						
2528	17	325-0351-100-1	30	30	325-0349-100	8	2527					
325-0351-100-1	325-0351-100-1	30	30	325-0349-100	8	2527						
2520	10	30	30	30	325-0354-100	12	2523					
325-0351-100-1	325-0351-100-1	30	30	325-0354-100	12	2523						
2516	11	30	30	30	325-0354-100	12	2521					
325-0352-100-7	325-0352-100-7	30	30	325-0354-100	12	2521						
2514	14	30	30	30	325-0354-100	12	2515					
325-0352-100-7	325-0352-100-7	30	30	325-0354-100	12	2515						
2508	15	325-0356	30	30	325-0357	16	2511					
325-0356	325-0356	30	30	325-0357	16	2511						
2506	18	325-0359	30	30	325-0358	17	2509					
325-0359	325-0359	30	30	325-0358	17	2509						
2504	18	325-0359	30	30	325-0358	17	2507					
325-0359	325-0359	30	30	325-0358	17	2507						
2502	19	325-0360	30	30	325-0361	20	2505					
325-0360	325-0360	30	30	325-0361	20	2505						
2500	19	126	30	30	325-0361	20	2503					
126	126	30	30	325-0361	20	2503						

14.97

W WRIGHT ST

FRITZE'S SUBDIVISION

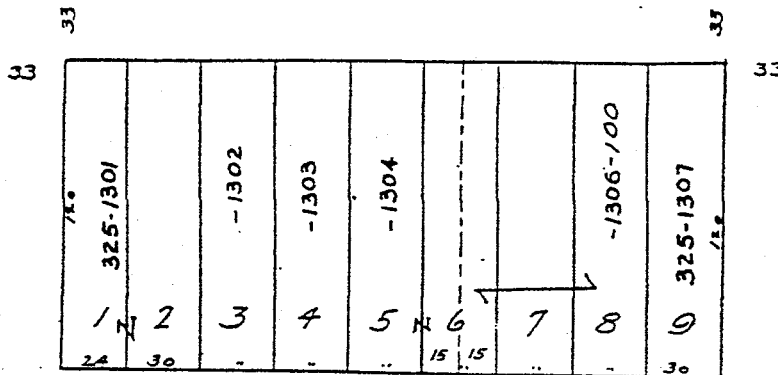
Subd. Lots 9x10 WILLIAMS SUBD.

W. CENTER

2431 2427 2423 2419 2407 57.
2429 2425 2421 2417 2405 2403 2401

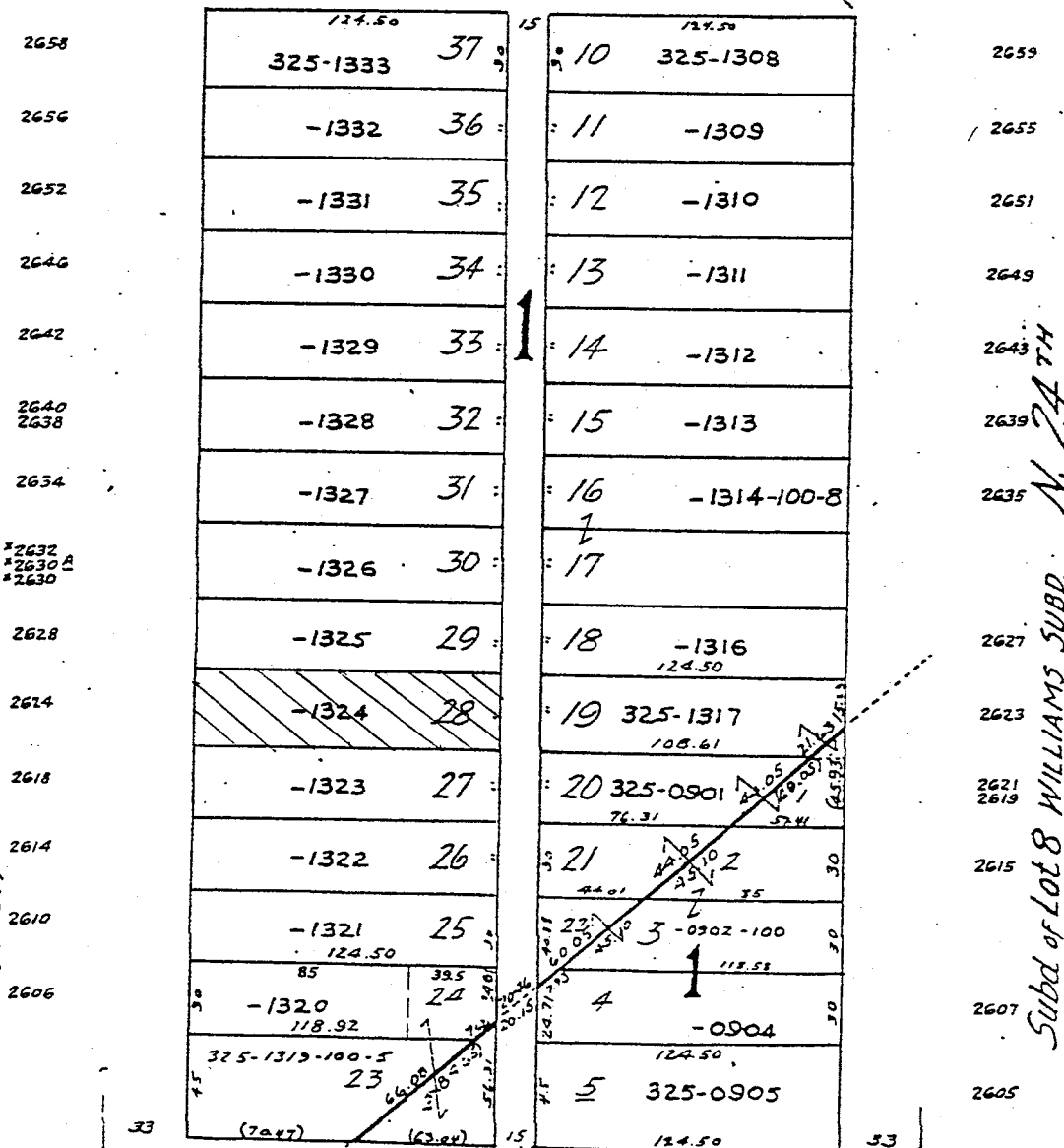


PL:



57.

N. 24 TH



N. 24 TH
Subd. of Lot 8 WILLIAMS SUBD.

33

33

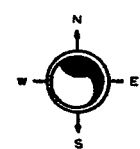
30

30

NW 18-7-22 310
 ATLAS P. 310

310-18
 SCALE 1"=80'

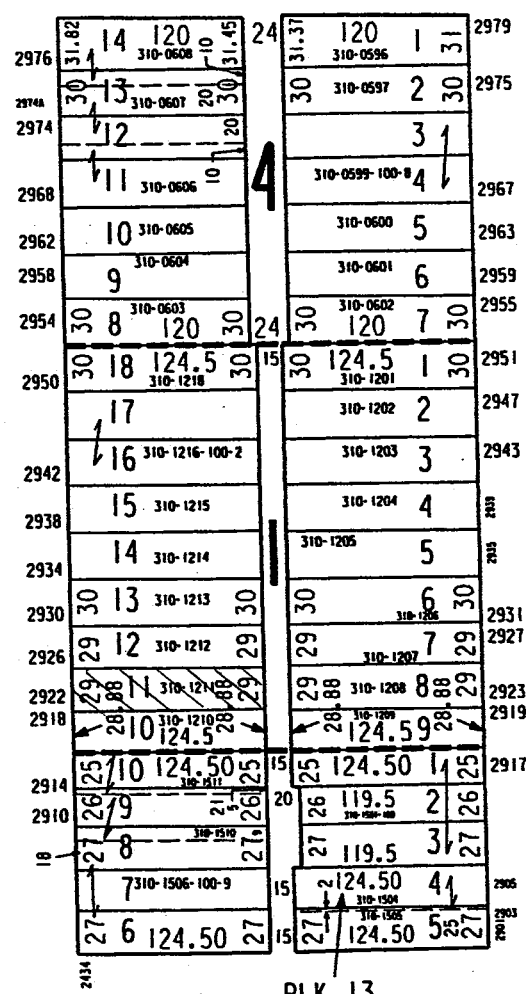
CAWKER'S SUBDIVISION "B"
 W CHAMBERS ST



N 24TH PL

N 24TH ST

LEVING'S SUBDIVISION



BLK. 13

W LOCUST ST

A. K. MAYHEW'S SUBDIVISION NO. 2

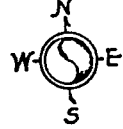
S.W. 31-7-22
Atlas p. 434

434

W. SCOTT

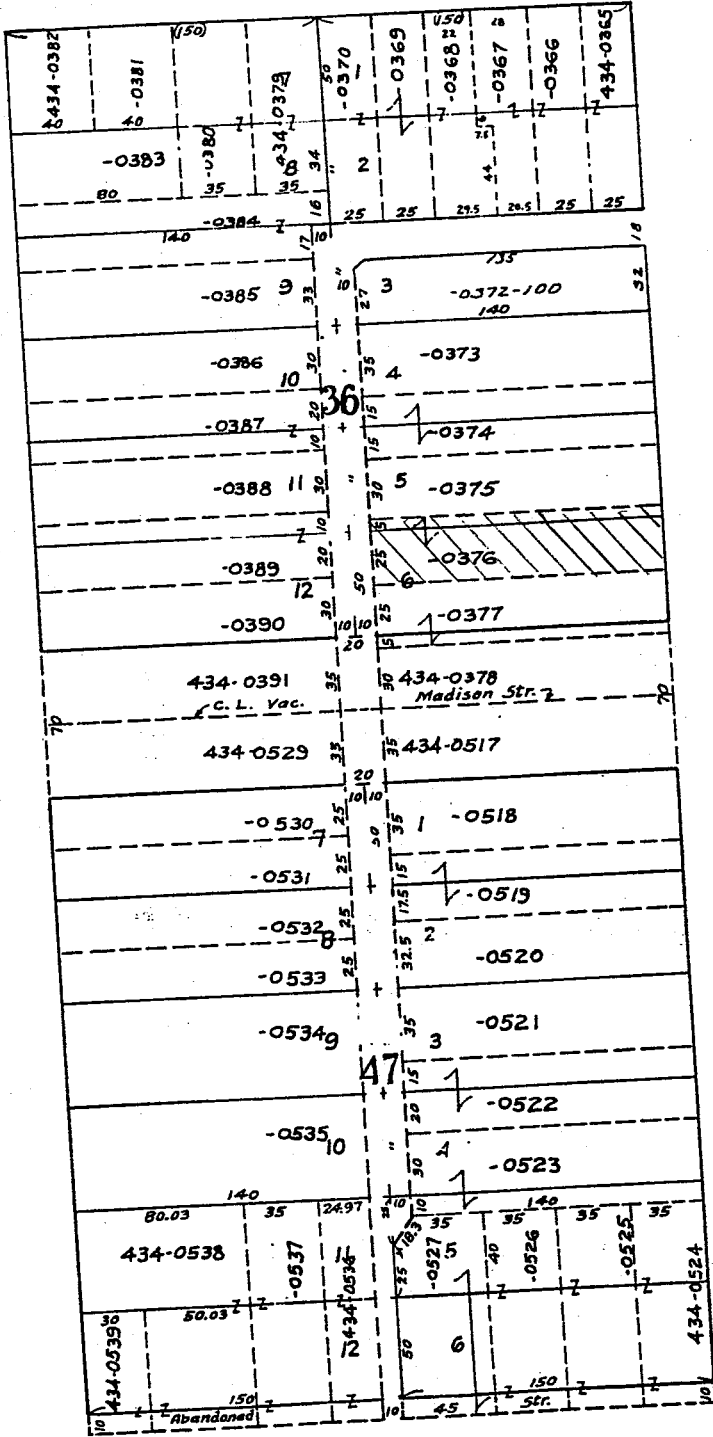
ST.

434-22



*2537 *2533 *2529 *2523 *2519 *2515 *2511 *2509 *2505 *2501
*2535 *2531 *2527 *2521

ST.
1206



ST.

*1217
*1221
*1223
*1227
*1229
*1231
*1233
*1235
*1239 & A
*1241
*1243
*1301
*1305
*1307
*1309
*1311
*1317
*1319
*1323
*1325
*1331

CLARK'S ADDITION

S. 25TH

S. 26TH

4-3-55

*2538 *2534 *2526 *2522 *2516 *2512 *2506 *2502
*2528 *2521

W. GREENFIELD

AVE.

7

W. ORCHARD
*2535-39

2517

2509

ST.
*2507-07A



ST.

ST.

S. 26TH

S. 25TH

	140		20						
	459-1369-100	1	30		30	40	140		
1504	-1369-200	2			39	459-1409	140		
1508	-1370	3			38	1408	459-1407		
1512 1514	-1371	4			37				
1516	-1372	5			36				
1520	-1373	6			35				
*1526-26A	-1374	7			34				
*1530-30A	-1375	8			33				
*1532-32A	-1376	9			32				
*1538-38A	-1377	10	7		31				
1540	-1378	11			30				
1546	-1379	12			29				
1548	-1380	13			28				
*1554	-1381-100	14			27				
		15			26				
					25				
1560	-1383	16			24				
1564	-1384	17			23				
1568	-1385	18			22				
1572 1574	-1386	19			21				
1576	459-1387	20	20		20	459-1389	140		

N.W.-6-6-22
ATLAS P. 459

MARK S. TYSON'S SUBD. NO. 2
459

459-23



W. ORCHARD

2435 2433 2429 2425

2417

2413

2407

ST.

2403

1502	459-1327	140	20	39	40	140	
	-1326			-1328			
ST. 1508 1510	459-1328		3	38			
1512 1514	-1329		4	37		-1364	
1518 1518A RMA	-1330		5	36	-1363	-1362	1513 1515
1522 1522A-RMA	-1332		6	35		-1361	1517-19 1519A (RMA)
1528	-1333		7	34		-1360	1521
1532	-1334		8	33		-1359	1527 1529
1536 1538	-1335		9	32			1531
1542	-1336		10	31		-1358	1537
1544	-1337		11	30		-1357	1543
1550	-1338		12	29		-1356	1545 1547
1554	-1339		13	28		-1355	1549
1558	-1340		14	27		-1354	1553
1562 1564	-1341		15	26		-1353	1559
1568 1570	-1342		16	25		-1352	1563
1572	-1343		17	24		459-1351	1567
1574	459-1344	140	20	23	35	35	S. 25TH
				22	35	35	
				21	35	35	S. 24TH

MICROFILMED 8-1-72

W. LAPHAM

2422

2416

2410

2404
2406

2400
2402

ST.

160
204

SW 20-8-21
ATLAS PAGE 145

145

W. JONEN

145-21
SCALE 1" = 80'

ST.



ST. 6484

6490

6476

6468

6462

6454

6448

6440

6434

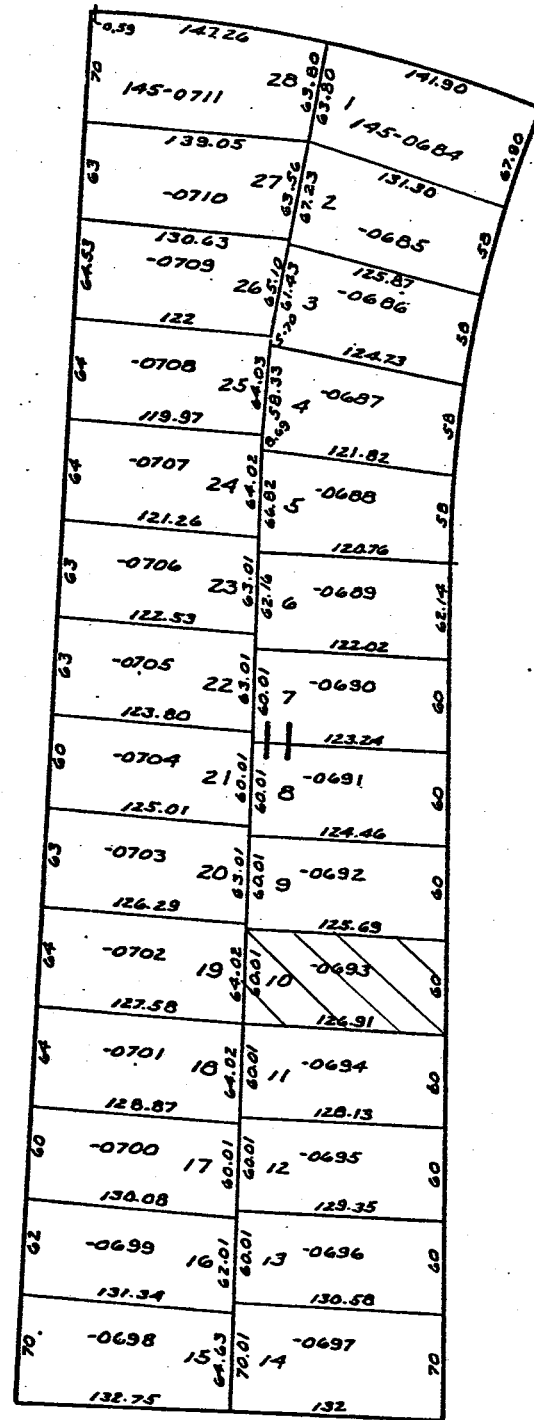
6426

6420

N 106TH
6414

6408

6402



ST. 6491

6483

6477

6469

6463

6455

6449

6441

6435

6427

6421

6413

6407

6401

MILLWOOD PARK

N. 105TH

MICROFILMED

W. MILL

DN

1/4 SEC

SW 20-8-21
ATLAS PAGE 145

145

145-18
SCALE 1" = 80'



N. BOURBON
ST.

AVE. 10305

10313-15

10321-23

10327
10329

10403
10405

10413

10419
10421

10427
10429

ST

N. 105TH
6627
6619
6611
6603
6601

ST.

W. DAPHNE

6552

N. 106TH
6550
6559

6579

6576

ST. 6504

10404

10412

10422

10430

10438

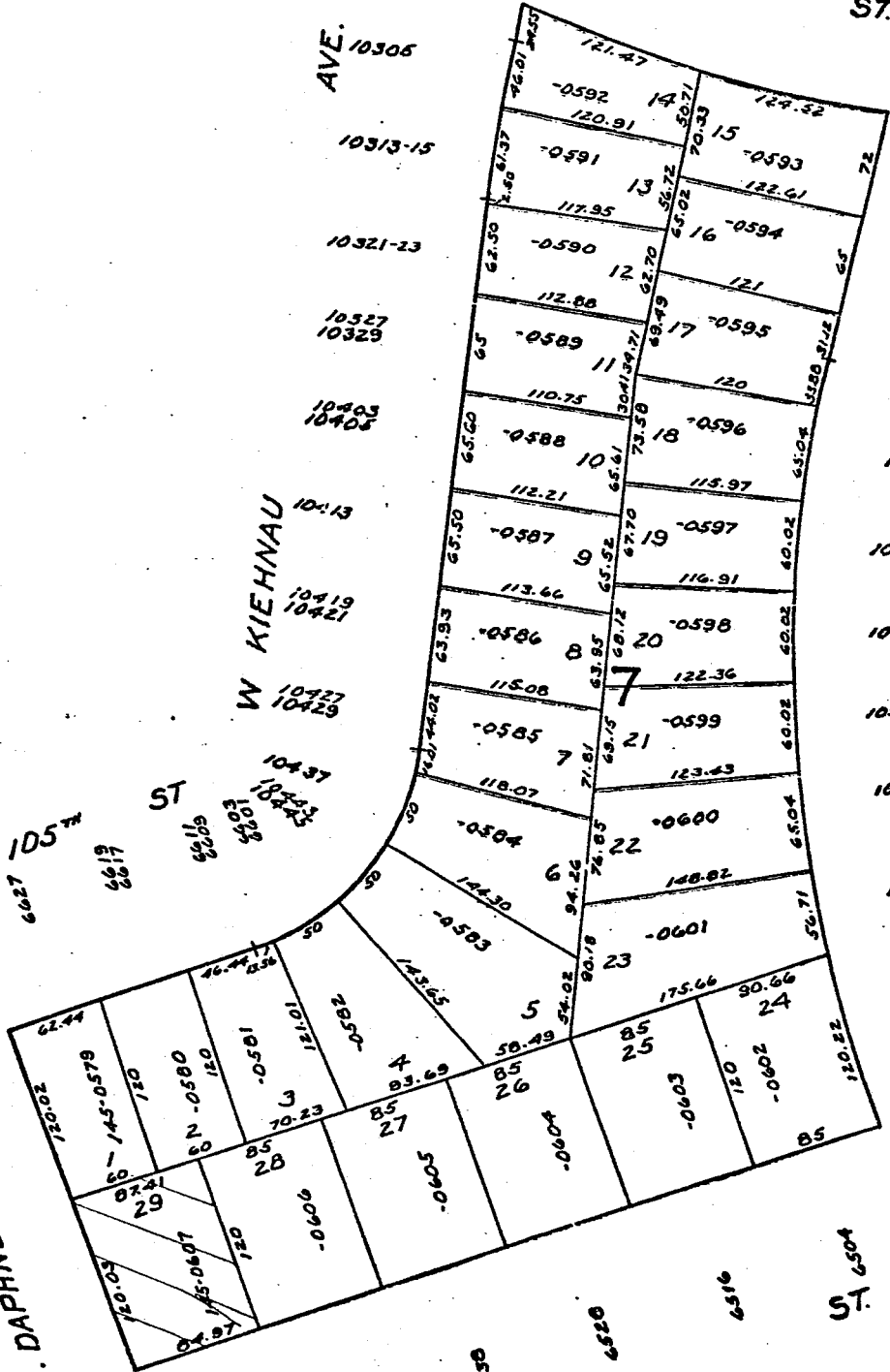
10440

10502

10510

10520

W. JONEN
MILLWOOD PARK

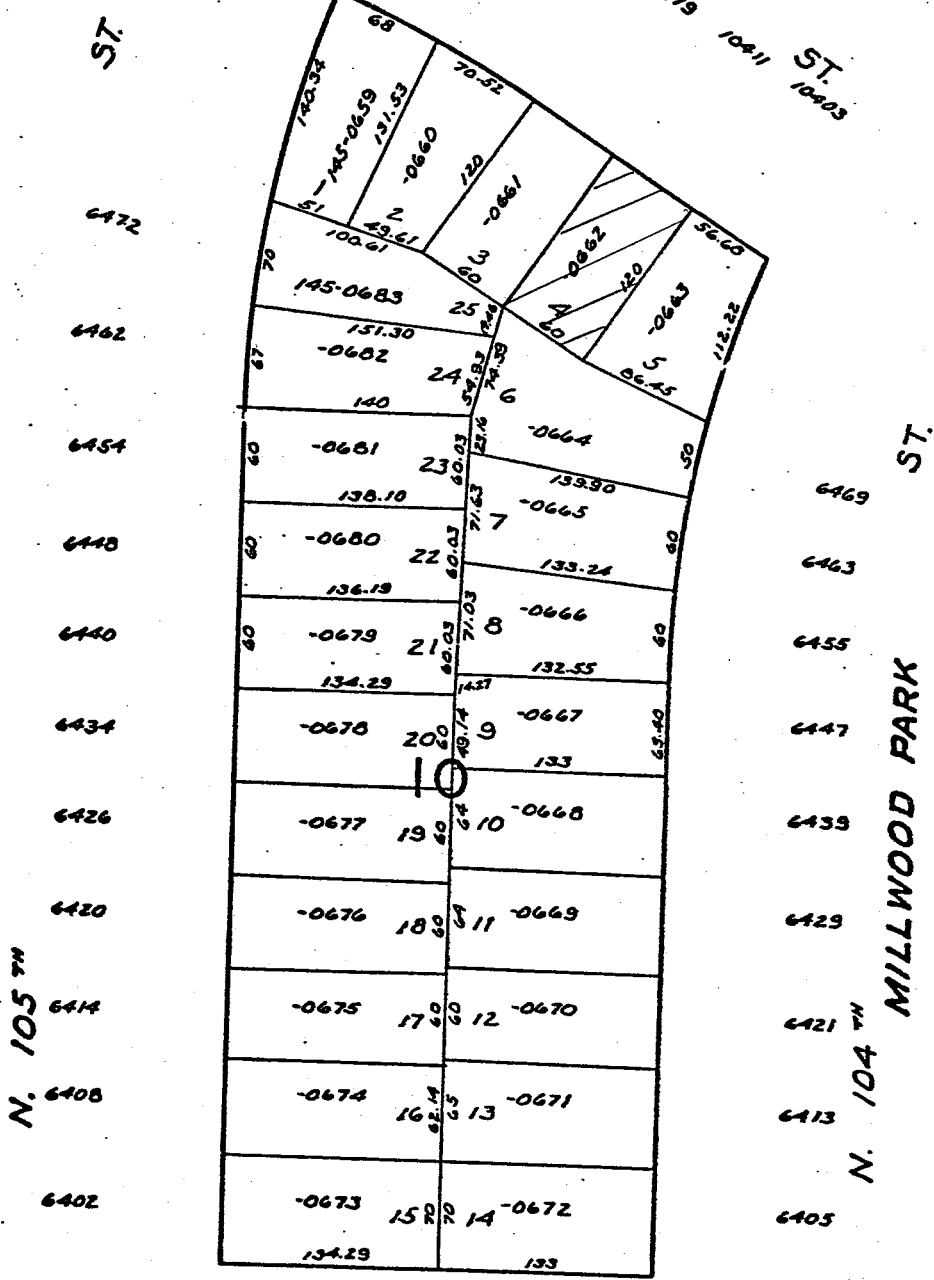


SW 20-8-21
ATLAS PAGE 145

145

145-20
SCALE 1" = 80'

W. JONEN
10-27



MICROFILMED 4-17-79

W MILL RD

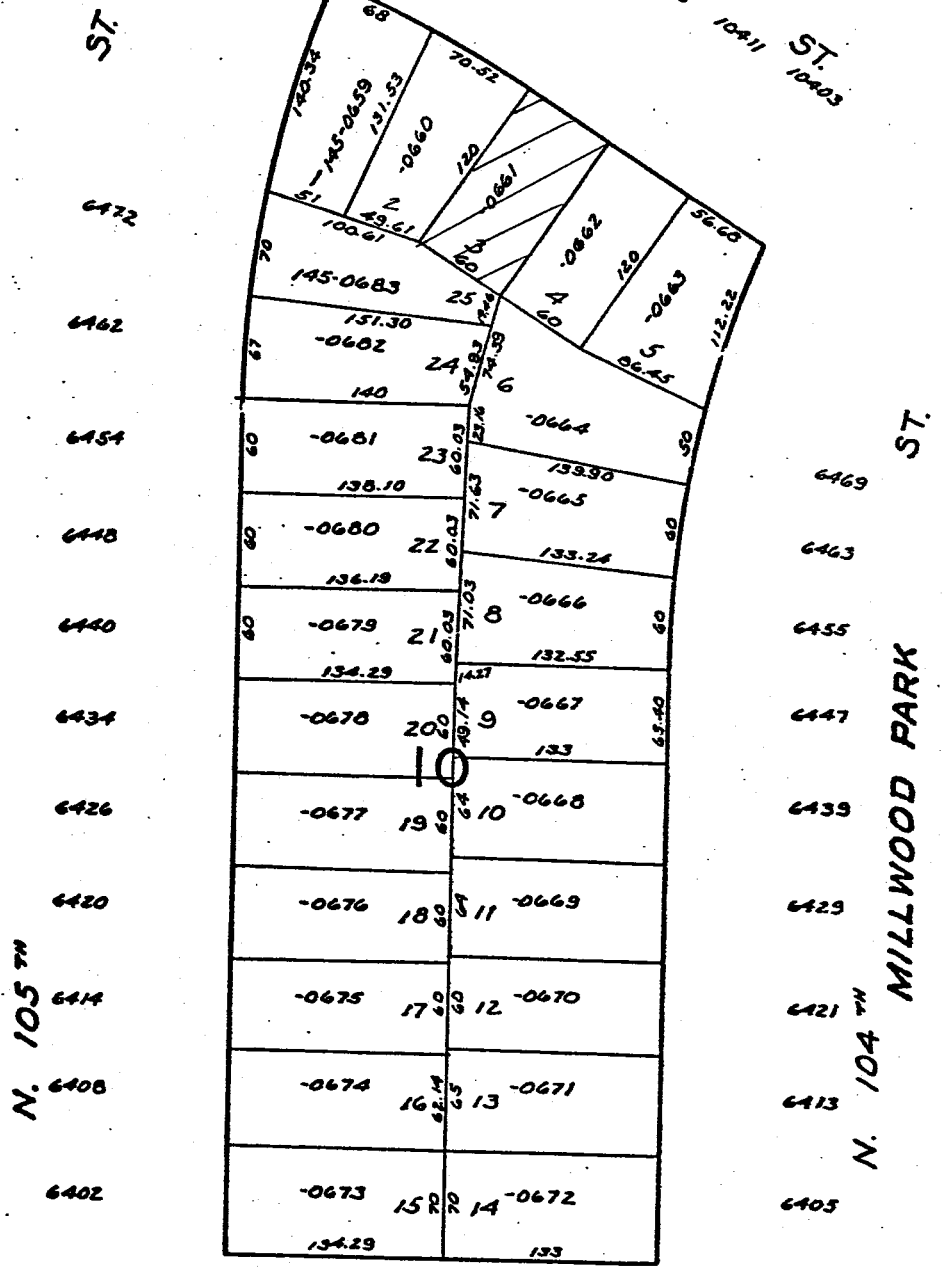
1/5 LI 1/4 SEC

SW 20-8-21
ATLAS PAGE 145

145

145-20
SCALE 1" = 80'

W. JONEN
10437



MICROFILMED 4-17-77

W MILL RD

1/5 LI 1/2 SEC

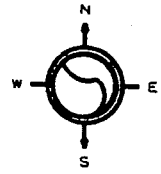
NE 06-6-22

ATLAS P. 460

460

460-03

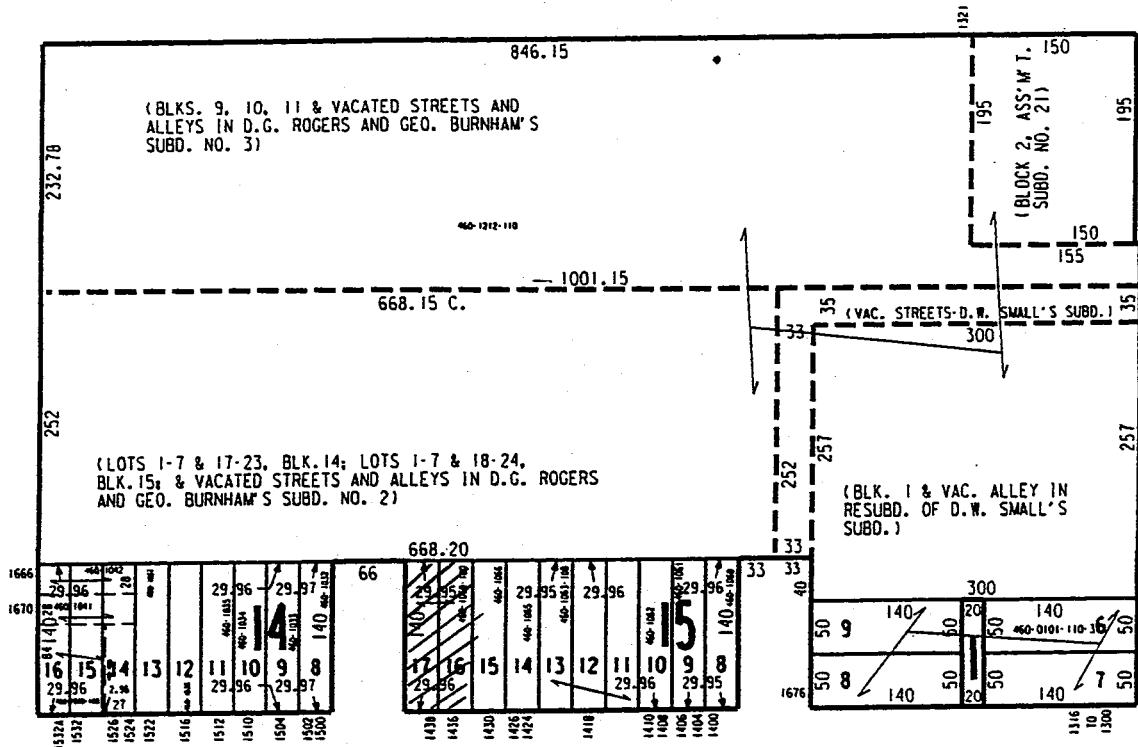
SCALE 1" = 140'



W LAPHAM BL

S 15TH PL

S 13TH ST



W HISTORIC MITCHELL ST

D. G. ROGERS & GEO.
BURNHAM'S SUBD NO. 2

BURNHAM, ROGERS, &
BECHER'S SUBD