

**E. PITTSBURGH**

**AVE.**

LANDS IN THE N.E. 1/4 SEC. 32,  
T. 7 N., R. 22 E.

LANDS IN THE N.W. 1/4 SEC. 33,  
T. 7 N., R. 22 E.

**ST.**

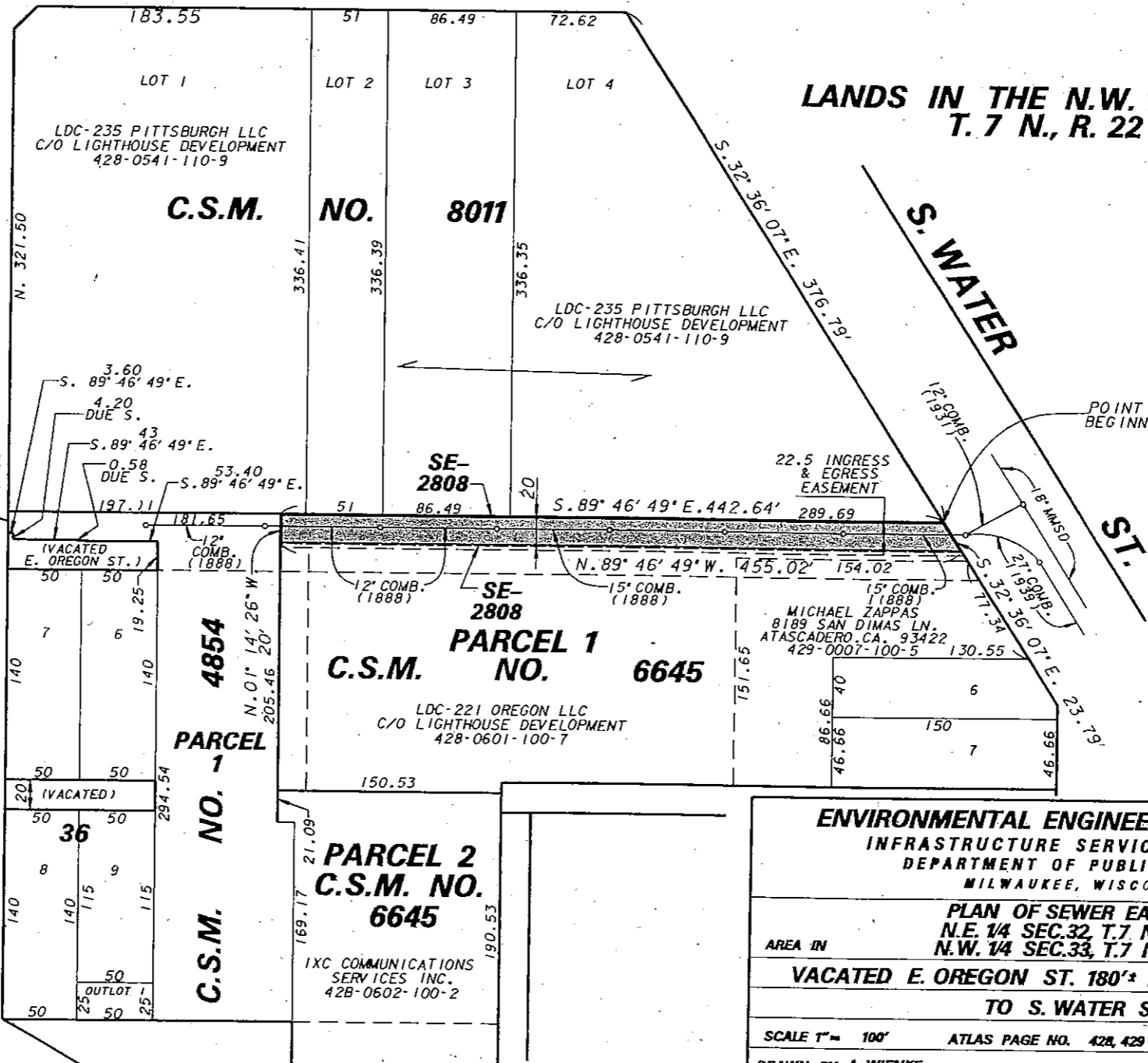
**S. BARCLAY**

9

34

**E. OREGON ST.**

**E. FLORIDA ST.**



<b>ENVIRONMENTAL ENGINEERING SECTION</b>		
INFRASTRUCTURE SERVICES DIVISION		
DEPARTMENT OF PUBLIC WORKS		
MILWAUKEE, WISCONSIN		
<b>PLAN OF SEWER EASEMENT</b>		
N.E. 1/4 SEC. 32, T. 7 N., R. 22 E.		
N.W. 1/4 SEC. 33, T. 7 N., R. 22 E.		
<b>AREA IN</b>		
<b>VACATED E. OREGON ST. 180'± E. OF S. BARCLAY ST.</b>		
<b>TO S. WATER ST.</b>		
SCALE 1" = 100'	ATLAS PAGE NO. 428, 429	EASE. NO. SE 2808
DRAWN BY A. WIENKE	CHKD. BY A. MUNOZ	W.O. NO.
APPROVED	<i>Marlin Segura</i>	DATE 9/16/08
APPROVED		FILE NO. 198-6-68