

N.W. 1/4 SEC. 9, T.6N., R.22E.

499

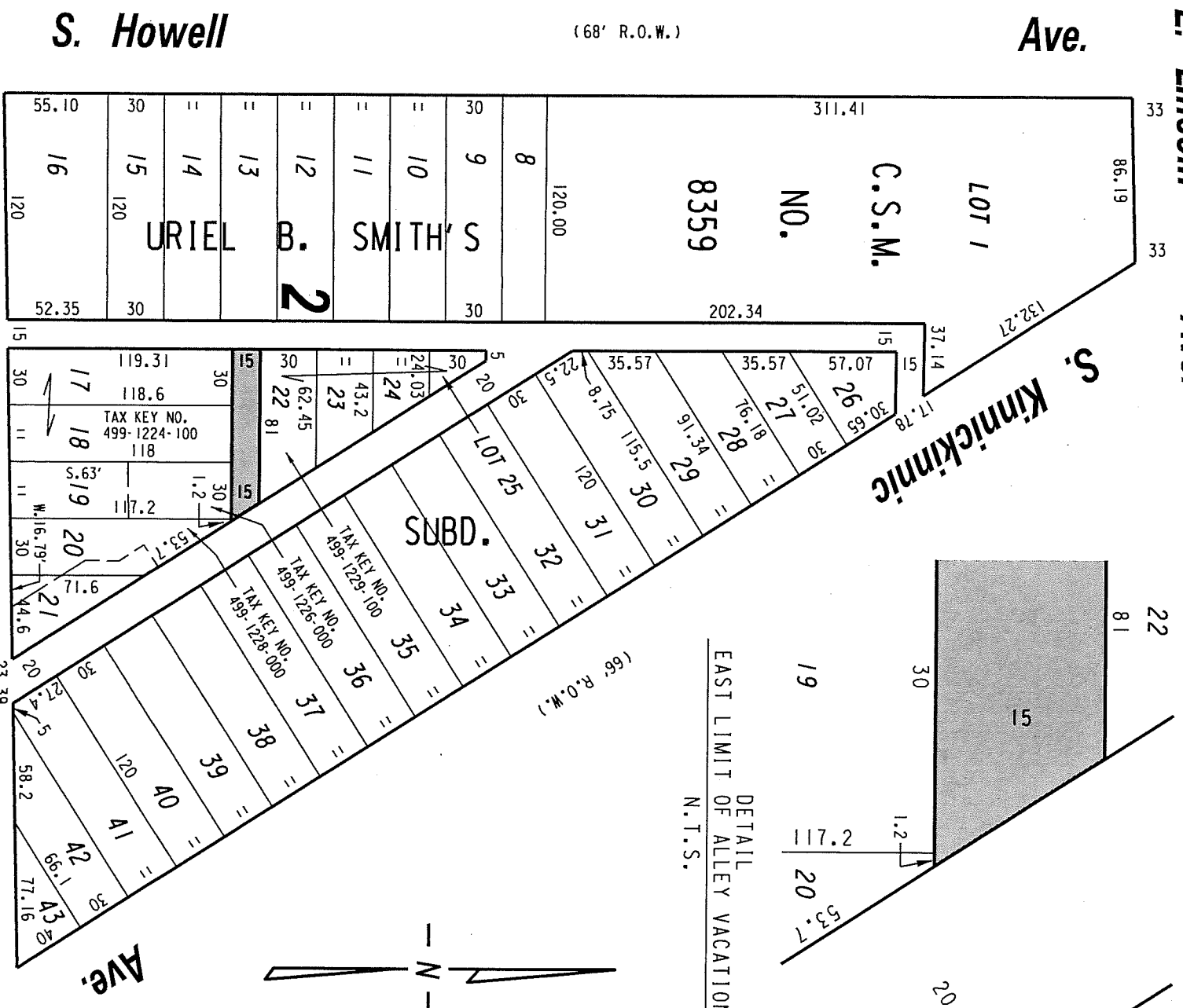
E. Lincoln Ave. (R.O.W. VARIES)

SEC. LINE

Ave.

S. Kinnickinnic Ave.

DETAIL EAST LIMIT OF ALLEY VACATION N.T.S.



PORTION OF PUBLIC ALLEY PROPOSED TO BE VACATED

EXHIBIT "A"
FILE NO. 170165
INFRASTRUCTURE SERVICES DIVISION

ASSIGNED TO: W. FUCHS
DRAWN BY: W.F.
PROJECT/GRANT NO.: WK52337398
APPROVED BY:
MILWAUKEE, WISCONSIN
CH'K'D. BY: W. FUCHS
DATE: JUNE 9, 2017
SCALE: 1" = 80'

CENTRAL DRAFTING & RECORDS MANAGER
Duty ENGINEER