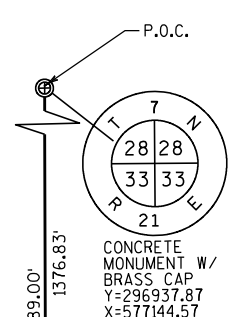


# EXHIBIT A

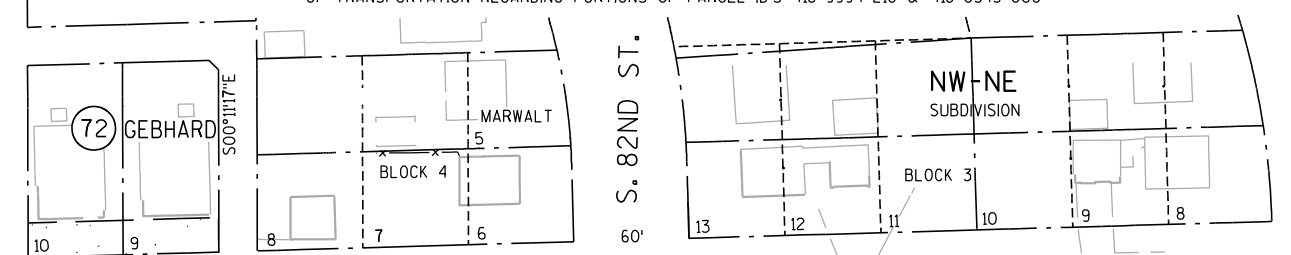
TO QUIT CLAIM DEED BETWEEN THE CITY OF MILWAUKEE AND THE WISCONSIN DEPARTMENT OF TRANSPORTATION REGARDING PORTIONS OF PARCEL ID'S 418-9994-210 & 418-0543-000



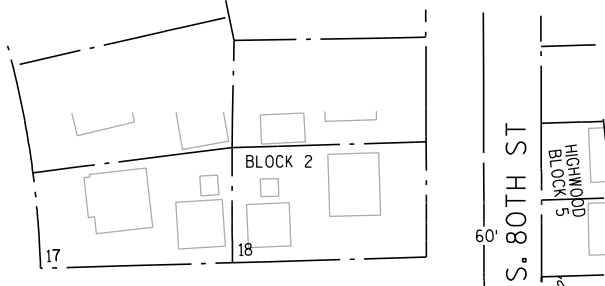
70  
TRUSTEES OF MILWAUKEE BOY SCOUT FUND

TLE FOR SLOPES  
CSM 4008  
PARCEL 2  
R.1370, L.412  
DOC. 5470002

S. 83RD ST.



S. HONEY CREEK DRIVE

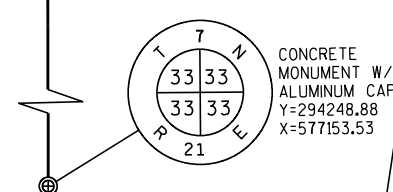


4

4

RL IH-94  
PI STA. 248+40.53  
Y : 295289.25  
X : 578195.08  
DELTA = 31°30'38"  
D = 1°14'44"  
T = 1297.79'  
L = 2529.83  
R = 4600.00

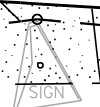
1/4 LINE  
300°1127'E  
2689.00'  
1376.83'  
1312.18'



20' MMSD SEWER EASEMENT  
DOC. 1343984

CSM 7867  
LOT 2  
DOC. 9365725

10  
PETTIT NATIONAL ICE CENTER



SW-NE

W. KEARNEY STREET

R/L IH 94

R = 3395.58'  
L = 60.18'  
C = 60.18'  
CB = N 85°17'39" E

PKNG GRAVEL

60' CITY OF MILWAUKEE SEWER & STORM EASEMENT  
DOC. 2013578

418-0543-000

11  
WISCONSIN STATE FAIR BOARD

66' MMSD EASEMENT  
DOC. 4076631 & 8161997

SE-NE

COORDINATES AND BEARINGS SHOWN ON THIS PLAT ARE REFERENCED TO THE WISCONSIN COUNTY COORDINATE SYSTEM, MILWAUKEE COUNTY ZONE, NAD83 (2007) ADJUSTMENT. THE COORDINATES SHOWN ARE GRID COORDINATES AND ARE TO BE USED AS GRID OR GROUND VALUES ON THIS PLAT.

RIGHT-OF-WAY MONUMENTS ARE TYPE 2 (TYPICAL 3/4" REBAR) AND WILL BE PLACED PRIOR TO THE COMPLETION OF THE PROJECT BY WISCONSIN DOT SOUTHEAST REGION SURVEY.

RIGHT-OF-WAY BOUNDARIES ARE DEFINED WITH COURSES OF THE PERIMETER OF THE HIGHWAY LANDS REFERENCED TO THE U.S. PUBLIC LAND SURVEY SYSTEM OR OTHER "SURVEYS OF PUBLIC RECORD".

FOR THE LATEST ACCESS / DRIVEWAY INFORMATION, CONTACT THE PLANNING UNIT OF THE WISCONSIN DEPARTMENT OF TRANSPORTATION OFFICE OF WAUKESHA.

I-94 REFERENCE LINE IS CENTERLINE OF MEDIAN.

P.O.C. = POINT OF COMMENCING  
P.O.B. = POINT OF BEGINNING

HWY	BASIS OF EXISTING R/W	YEAR	WIDTH
IH 94	194-41261303	1970	VARIES
80TH STREET	HIGHWOOD	1921	30' EAST
80TH STREET	MARWALT SUBDIVISION	1937	30' WEST
S. HONEY CREEK DR.	MARWALT SUBDIVISION	1937	90'
S. 82ND STREET	MARWALT SUBDIVISION	1937	60'
S. 83RD STREET	CSM 4008	1980	VARIES

REVISION DATE	DATE AUGUST 22, 2013	SCALE, FEET 0 50 100	HWY: IH 94	STATE R/W PROJECT NUMBER 1060-33-24	PLAT SHEET N/A
			COUNTY: MILWAUKEE	CONSTRUCTION PROJECT NUMBER	PS&E SHEET 2 OF 2 E