

Sasaki Associates, Inc.

Planning / Architecture / Landscape Architecture
Urban Design / Transportation Planning / Civil Engineering
Environmental Services / Interior Design / Graphic Design
84 Pleasant Street, Wellesley, Massachusetts 02157
617/235 3300 Telex 872101 Fax 617/235 3348

- SYMBOLS LEGEND**
- PARKING LIGHT
 - ⊕ FIELD LIGHT
 - ⊕ PEDESTRIAN LIGHT
 - BOLLARD LIGHT
 - BOLLARD
 - SANITARY MANHOLE
 - DRAIN MANHOLE
 - CLEANOUT
 - CATCH BASIN
 - ⊞ HAYBALE CATCH BASIN
 - ⊞ TRANSFORMER PAD
 - SERVICE RECEPTACLE
 - ⊕ SCOREBOARD / TIMING OUTLET
 - ⊕ WATER VALVE
 - ⊕ DRINKING FOUNTAIN
 - ⊕ FLUSH HYDRANT

No.	Description	Date
REVISIONS		

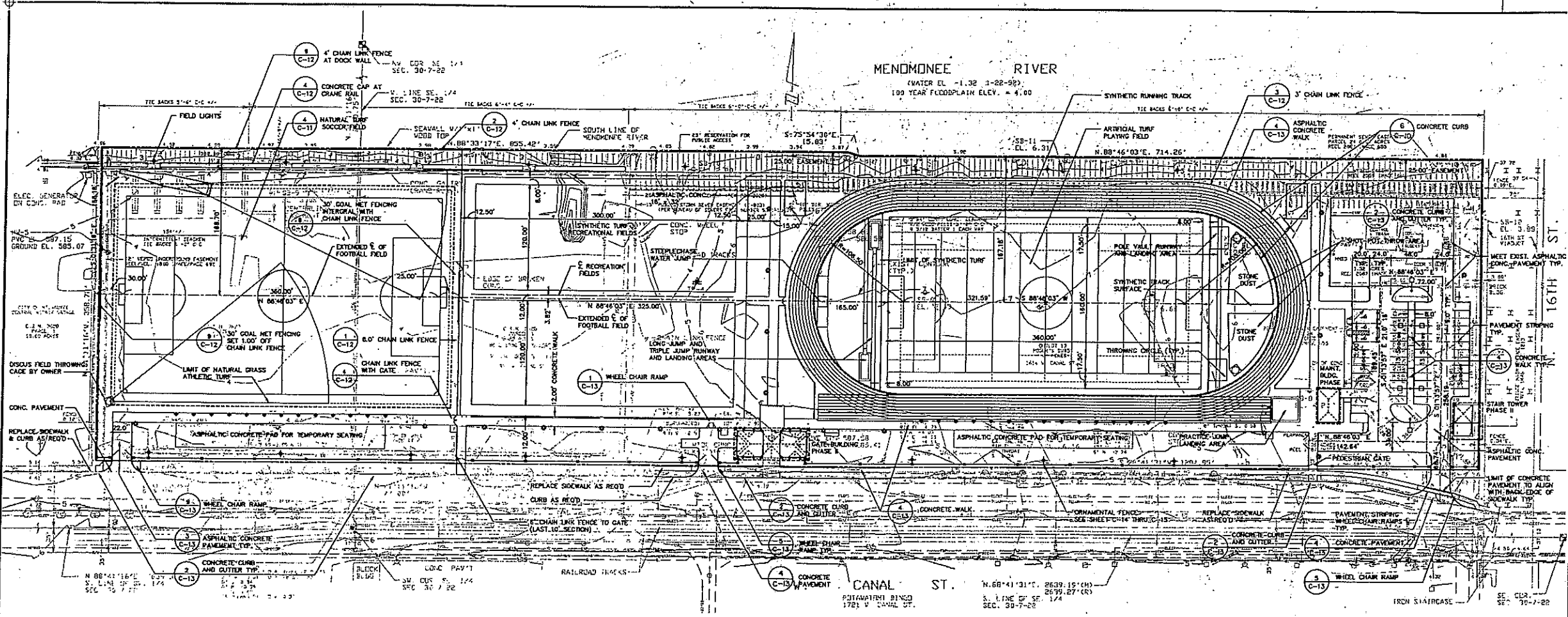
VALLEY LANDS PLAYING FIELDS PHASE I

Milwaukee Medical Research Foundation

TITLE
LAYOUT & MATERIALS

Scale 1"=50'-0" Date 8-24-92
Drawn By
Checked By
Approved By
Project No. 11385.00

DWG No. C-3



FOR ADDITIONAL LAYOUT AND MATERIALS INFORMATION SEE SHEET C-3A AND C-3B

LEGEND

- 1. 1/2" CONC. CURB
- 2. 1/2" CONC. CURB AND OUTER TYP.
- 3. ASPHALTIC CONCRETE PAVEMENT TYP.
- 4. ASPHALTIC CONCRETE PAVEMENT FOR TEMPORARY SEATING
- 5. 6" CONC. CURB
- 6. 6" CONC. CURB AND OUTER TYP.
- 7. 1/2" CONC. CURB
- 8. 1/2" CONC. CURB AND OUTER TYP.
- 9. 1/2" CONC. CURB
- 10. 1/2" CONC. CURB AND OUTER TYP.
- 11. 1/2" CONC. CURB
- 12. 1/2" CONC. CURB AND OUTER TYP.
- 13. 1/2" CONC. CURB
- 14. 1/2" CONC. CURB AND OUTER TYP.
- 15. 1/2" CONC. CURB
- 16. 1/2" CONC. CURB AND OUTER TYP.
- 17. 1/2" CONC. CURB
- 18. 1/2" CONC. CURB AND OUTER TYP.
- 19. 1/2" CONC. CURB
- 20. 1/2" CONC. CURB AND OUTER TYP.
- 21. 1/2" CONC. CURB
- 22. 1/2" CONC. CURB AND OUTER TYP.
- 23. 1/2" CONC. CURB
- 24. 1/2" CONC. CURB AND OUTER TYP.
- 25. 1/2" CONC. CURB
- 26. 1/2" CONC. CURB AND OUTER TYP.
- 27. 1/2" CONC. CURB
- 28. 1/2" CONC. CURB AND OUTER TYP.
- 29. 1/2" CONC. CURB
- 30. 1/2" CONC. CURB AND OUTER TYP.
- 31. 1/2" CONC. CURB
- 32. 1/2" CONC. CURB AND OUTER TYP.
- 33. 1/2" CONC. CURB
- 34. 1/2" CONC. CURB AND OUTER TYP.
- 35. 1/2" CONC. CURB
- 36. 1/2" CONC. CURB AND OUTER TYP.
- 37. 1/2" CONC. CURB
- 38. 1/2" CONC. CURB AND OUTER TYP.
- 39. 1/2" CONC. CURB
- 40. 1/2" CONC. CURB AND OUTER TYP.
- 41. 1/2" CONC. CURB
- 42. 1/2" CONC. CURB AND OUTER TYP.
- 43. 1/2" CONC. CURB
- 44. 1/2" CONC. CURB AND OUTER TYP.
- 45. 1/2" CONC. CURB
- 46. 1/2" CONC. CURB AND OUTER TYP.
- 47. 1/2" CONC. CURB
- 48. 1/2" CONC. CURB AND OUTER TYP.
- 49. 1/2" CONC. CURB
- 50. 1/2" CONC. CURB AND OUTER TYP.
- 51. 1/2" CONC. CURB
- 52. 1/2" CONC. CURB AND OUTER TYP.
- 53. 1/2" CONC. CURB
- 54. 1/2" CONC. CURB AND OUTER TYP.
- 55. 1/2" CONC. CURB
- 56. 1/2" CONC. CURB AND OUTER TYP.
- 57. 1/2" CONC. CURB
- 58. 1/2" CONC. CURB AND OUTER TYP.
- 59. 1/2" CONC. CURB
- 60. 1/2" CONC. CURB AND OUTER TYP.
- 61. 1/2" CONC. CURB
- 62. 1/2" CONC. CURB AND OUTER TYP.
- 63. 1/2" CONC. CURB
- 64. 1/2" CONC. CURB AND OUTER TYP.
- 65. 1/2" CONC. CURB
- 66. 1/2" CONC. CURB AND OUTER TYP.
- 67. 1/2" CONC. CURB
- 68. 1/2" CONC. CURB AND OUTER TYP.
- 69. 1/2" CONC. CURB
- 70. 1/2" CONC. CURB AND OUTER TYP.
- 71. 1/2" CONC. CURB
- 72. 1/2" CONC. CURB AND OUTER TYP.
- 73. 1/2" CONC. CURB
- 74. 1/2" CONC. CURB AND OUTER TYP.
- 75. 1/2" CONC. CURB
- 76. 1/2" CONC. CURB AND OUTER TYP.
- 77. 1/2" CONC. CURB
- 78. 1/2" CONC. CURB AND OUTER TYP.
- 79. 1/2" CONC. CURB
- 80. 1/2" CONC. CURB AND OUTER TYP.
- 81. 1/2" CONC. CURB
- 82. 1/2" CONC. CURB AND OUTER TYP.
- 83. 1/2" CONC. CURB
- 84. 1/2" CONC. CURB AND OUTER TYP.
- 85. 1/2" CONC. CURB
- 86. 1/2" CONC. CURB AND OUTER TYP.
- 87. 1/2" CONC. CURB
- 88. 1/2" CONC. CURB AND OUTER TYP.
- 89. 1/2" CONC. CURB
- 90. 1/2" CONC. CURB AND OUTER TYP.
- 91. 1/2" CONC. CURB
- 92. 1/2" CONC. CURB AND OUTER TYP.
- 93. 1/2" CONC. CURB
- 94. 1/2" CONC. CURB AND OUTER TYP.
- 95. 1/2" CONC. CURB
- 96. 1/2" CONC. CURB AND OUTER TYP.
- 97. 1/2" CONC. CURB
- 98. 1/2" CONC. CURB AND OUTER TYP.
- 99. 1/2" CONC. CURB
- 100. 1/2" CONC. CURB AND OUTER TYP.

NOTE:
All elevations are based on City of Milwaukee Datum and converted to NGVD Datum by adding 989.60.
Monitoring well elevations are at NGVD Datum.

LEGAL DESCRIPTION:
That part of Parcels 2 and 3 of Certified Survey Map No. 362B, and Parcel 12 of Regier's Subdivision in the Southwest One-quarter (1/4) of the Southwest One-quarter (1/4) of Section 30, TOWNSHIP 7 NORTH, RANGE 22 EAST, in the CITY OF MILWAUKEE, MILWAUKEE COUNTY, WISCONSIN, bounded and described as follows:

Commencing at the Southwest Corner of said Southwest One-quarter (1/4), thence NORTH 01°11'52" WEST, on and along the West line of said Southwest One-quarter (1/4), 27.00 feet to a point on the North right-of-way line of West Canal Street; thence SOUTH 88°41'16" WEST, on and along said right-of-way line, 27.00 feet to a point on the South line of said Parcel 2, and parallel to the South line of said Southwest One-quarter (1/4), 303.00 feet to a point on the West line of Parcel 2, and along the West line of said Parcel 2, 100.00 feet to the West line of said Southwest One-quarter (1/4), 328.00 feet to a point on the South line of said line of Menomonee River, thence NORTH 88°41'16" EAST, on and along said right-of-way line of the Menomonee River, 27.00 feet to a point on the North line of Parcel 2, and along said North line of Parcel 2, 100.00 feet to a point on the North line of Parcel 12, 15.87 feet to a point, thence NORTH 88°46'03" EAST, on and along said North line of the Menomonee River, and said North line of Parcel 12, 714.26 feet to a point on the West right-of-way line of South 16th Street, thence SOUTH 01°11'52" WEST, on and along said West right-of-way line and parallel to the West line of said Southwest One-quarter (1/4), 328.00 feet to a point on the North right-of-way line of West Canal Street, thence SOUTH 88°41'16" WEST, on and along said right-of-way line, and parallel to the West line of Parcel 2, 100.00 feet to the Southwest Corner of said Southwest One-quarter (1/4), 199.00 feet to the point of beginning.

SURVEYORS CERTIFICATE

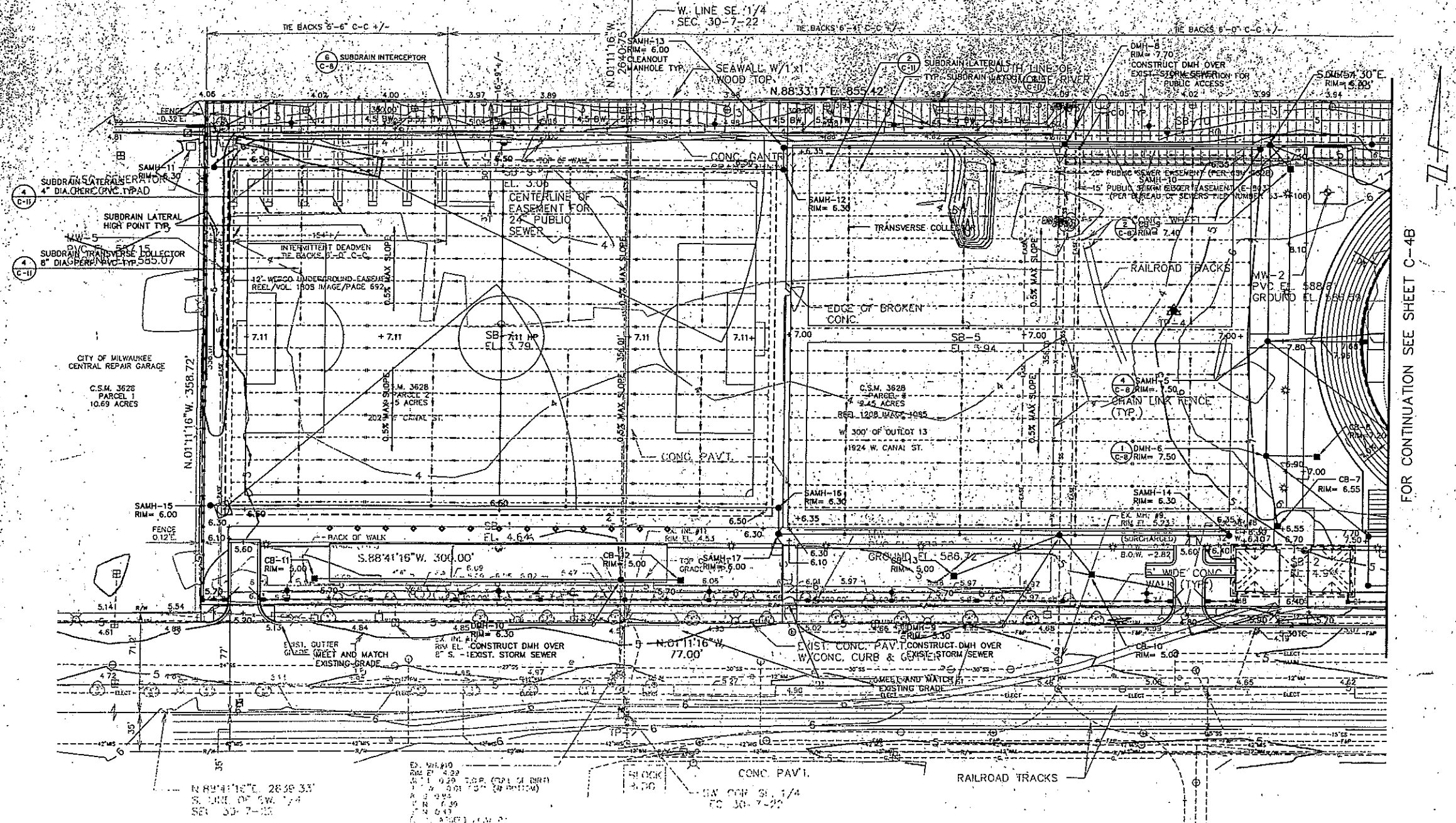
I, JEFFREY W. WILSON, Surveyor, do hereby certify that I have surveyed the above described property and that the map hereon is a true and correct representation of the same, showing the size and location of the parcels, and the location and dimensions of all visible structures thereon, fences, appurtenant easements, rights-of-way and visible physical obstructions, if any.

This survey was made for the Milwaukee City of Milwaukee, Wisconsin, and is a part of the City of Milwaukee's Public Works Department's files. The survey was made on 8/24/92.

JEFFREY W. WILSON
Surveyor

Sasaki Associates, Inc.

Planning / Architecture / Landscape Architecture
 Urban Design / Transportation Planning / Civil Engineering
 Environmental Science / Interior Design / Graphic Design
 64 Pleasant Street, Boston, Massachusetts 02111
 617/261-3300 Fax 617/261-3301



FOR CONTINUATION SEE SHEET C-4B

- SYMBOLS LEGEND**
- PARKING LIGHT
 - ⊕ FIELD LIGHT
 - PEDESTRIAN LIGHT
 - BOLLARD LIGHT
 - BOLLARD
 - SANITARY MANHOLE
 - DRAIN MANHOLE
 - CLEANOUT
 - CATCH BASIN
 - ⊙ HAYBALE CATCH BASIN
 - ⊞ TRANSFORMER PAD
 - ⊕ SERVICE RECEPTACLE
 - ⊕ SCOREBOARD / TIMING OUTLET
 - ⊕ WATER VALVE
 - ⊕ DRINKING FOUNTAIN
 - ⊕ FLUSH HYDRANT

No.	Description	Date
REVISIONS		

VALLEY LANDS PLAYING FIELDS PHASE I

Milwaukee Medical Research Foundation

DRAINAGE AND GRADING PLAN

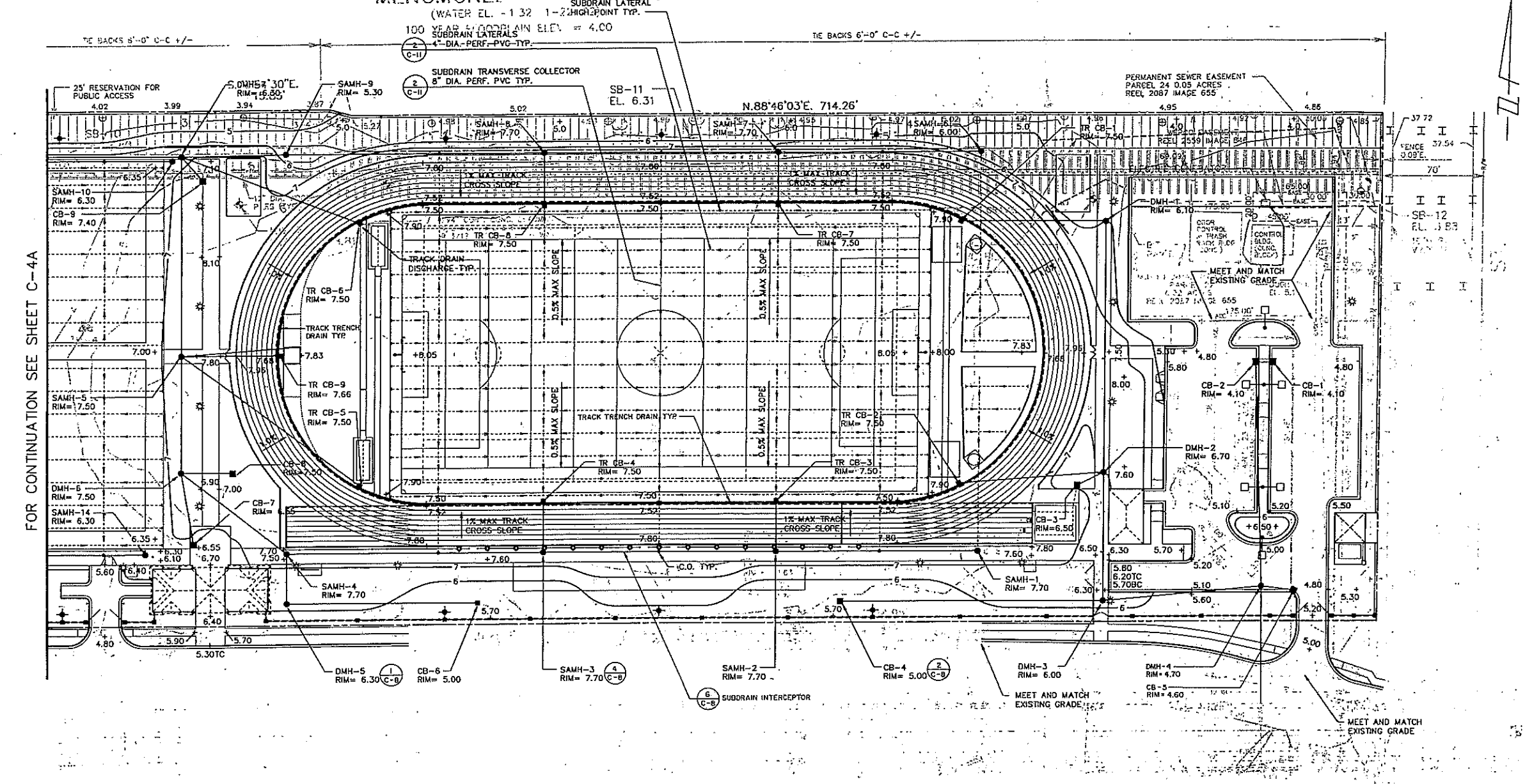
Scale 1" = 30' Date 8-24-92
 Drawn By
 Checked By
 Approved By
 Project No. 11835.00
 DWG No. C4-A

DRAINAGE STRUCTURES						
STR. NO.	FROM RIM	TO RIM	LENGTH (FT.)	DIA. (IN.)	SLOPE (FT./FT.)	INVERT ELEVATION FROM TO
CB-1	4.10	CB-2	4.10	10.0	12.0	0.010 0.10 0.00
CB-2	4.10	DMH-4	4.70	160.0	15.0	0.005 -0.25 -1.05
TR. CB-1	7.50	DMH-1	6.10			
DMH-1	6.10	DMH-2	6.70	170.0	12.0	0.010 2.10 0.40
TR. CB-2	7.50	DMH-2	6.70			
CB-3	6.50	DMH-2	6.70	15.0	12.0	0.010 2.50 2.35
DMH-2	6.70	DMH-3	6.00	90.0	15.0	0.010 2.10 1.20
CB-4	5.00	DMH-3	6.00	185.0	15.0	0.005 0.75 -0.18
DMH-3	6.00	DMH-4	4.70	108.0	15.0	0.010 -0.18 -1.26
CB-5	4.60	DMH-4	4.70	15.0	12.0	0.010 0.60 0.45
DMH-4	4.70	EX. DMH		82.0	18.0	0.010 -1.26 -2.08
SAMH-1	7.70	SAMH-2	7.70	140.0	8.0	0.005 5.40 4.70
TR. CB-3	7.50	SAMH-2	7.70			
SAMH-2	7.70	SAMH-3	7.70	160.0	12.0	0.010 4.68 3.08
TR. CB-4	7.50	SAMH-3	7.70			
SAMH-3	7.70	SAMH-4	7.70	180.0	12.0	0.010 3.08 1.28
CB-6	5.00	DMH-5	6.30	135.0	12.0	0.005 2.00 1.33
DMH-5	6.30	SAMH-4	7.70	35.0	12.0	0.005 1.33 1.15
SAMH-4	7.70	DMH-6	7.50	90.0	18.0	0.005 0.65 0.20
CB-7	6.55	DMH-6	7.50	50.0	12.0	0.010 2.55 2.05
DMH-6	7.50	DMH-7	7.50	37.0	12.0	0.010 3.20 2.83
DMH-7	7.50	SAMH-5	7.50	82.0	18.0	0.005 0.20 -0.21
TR. CB-5	7.50	SAMH-5	7.50			
SAMH-5	7.50	DMH-7	6.30	140.0	18.0	0.007 -0.21 -1.19

DRAINAGE STRUCTURES						
STR. NO.	FROM RIM	TO RIM	LENGTH (FT.)	DIA. (IN.)	SLOPE (FT./FT.)	INVERT ELEVATION FROM TO
CB-9	7.40	DMH-7	6.30	20.0	12.0	0.010 3.40 3.20
TR. CB-6	7.50	DMH-7	6.30			
SAMH-6	6.00	SAMH-7	7.70	140.0	8.0	0.005 3.33 2.63
TR. CB-7	7.50	SAMH-7	7.70			
SAMH-7	7.70	SAMH-8	7.70	160.0	12.0	0.005 2.30 1.50
TR. CB-8	7.50	SAMH-8	7.70			
SAMH-8	7.70	SAMH-9	5.30	180.0	12.0	0.010 1.50 -0.30
SAMH-9	5.30	DMH-7	6.30	74.0	12.0	0.010 -0.30 -1.04
DMH-7	6.30	DMH-8	6.30	145.0	24.0	0.005 -2.04 -2.76
SAMH-10	6.30	DMH-8	6.30	90.0	12.0	0.005 3.30 2.85
SAMH-11	6.30	SAMH-12	6.30	340.0	12.0	0.005 3.30 1.60
SAMH-12	6.30	SAMH-13	6.00	15.0	12.0	0.005 1.60 1.53
SAMH-13	6.00	DMH-8	6.30	200.0	15.0	0.005 1.53 0.53
SAMH-14	6.30	DMH-9	6.30	90.0	12.0	0.005 3.30 2.85
SAMH-15	6.00	SAMH-16	6.30	340.0	12.0	0.005 3.00 1.50
SAMH-16	6.30	SAMH-17	6.00	15.0	12.0	0.005 1.30 1.23
SAMH-17	6.00	DMH-9	6.30	200.0	15.0	0.005 1.23 0.23
CB-13	5.00	DMH-9	6.30	80.0	12.0	0.010 2.00 1.20
CB-10	5.00	DMH-9	6.30	40.0	12.0	0.010 2.00 1.60
CB-11	5.00	DMH-10	5.00	215.0	12.0	0.005 2.00 0.93
CB-12	5.00	DMH-10	5.00	42.0	12.0	0.010 2.00 1.58
TR. CB-9	7.66	SAMH-5	7.50			

• AS PER TRACK DRAINAGE INSTALLER REQUIREMENTS

MENOMONIE RIVER



FOR CONTINUATION SEE SHEET C-4A

Sasaki Associates, Inc.

Planning / Architecture / Landscape Architecture
 Urban Design / Transportation Planning / Civil Engineering
 Environmental Services / Interior Design / Graphic Design
 84 Pleasant Street, Wellesley, Massachusetts 02157
 617/934 3300 Telex 972471 Fax 617/934 2746

- SYMBOLS LEGEND**
- PARKING LIGHT
 - ⊕ FIELD LIGHT
 - PEDESTRIAN LIGHT
 - BOLLARD LIGHT
 - BOLLARD
 - SANITARY MANHOLE
 - DRAIN MANHOLE
 - CLEANOUT
 - CATCH BASIN
 - ⊙ HAYBALE CATCH BASIN
 - ⊠ TRANSFORMER PAD
 - SERVICE RECEPTACLE
 - ⊕ SCOREBOARD / TIMING OUTLET
 - ⊕ WATER VALVE
 - ⊕ DRINKING FOUNTAIN
 - ⊕ FLUSH HYDRANT

DRAINAGE STRUCTURES

STR. NO.	FROM RIM	TO RIM	LENGTH (FT.)	DIA. (IN.)	SLOPE (FT./FT.)	INVERT ELEVATION FROM	INVERT ELEVATION TO
CB-1	4.10	CB-2 4.10	10.0	12.0	0.010	0.10	0.00
CB-2	4.10	DMH-4 4.70	160.0	15.0	0.005	-0.25	-1.05
TR. CB-1	7.50	DMH-1 6.10					
DMH-1	6.10	DMH-2 6.70	170.0	12.0	0.010	2.10	0.40
TR. CB-2	7.50	DMH-2 6.70					
CB-3	6.50	DMH-2 6.70	15.0	12.0	0.010	2.50	2.35
DMH-2	6.70	DMH-3 6.00	90.0	15.0	0.010	2.10	1.20
CB-4	5.00	DMH-3 6.00	185.0	15.0	0.005	0.75	-0.18
DMH-3	6.00	DMH-4 4.70	108.0	15.0	0.010	-0.18	-1.26
CB-5	4.60	DMH-4 4.70	15.0	12.0	0.010	0.60	0.45
DMH-4	4.70	EX. DMH	82.0	18.0	0.010	-1.26	-2.08
SAMH-1	7.70	SAMH-2 7.70	140.0	8.0	0.005	5.40	4.70
TR. CB-3	7.50	SAMH-2 7.70					
SAMH-2	7.70	SAMH-3 7.70	160.0	12.0	0.010	4.68	3.08
TR. CB-4	7.50	SAMH-3 7.70					
SAMH-3	7.70	SAMH-4 7.70	180.0	12.0	0.010	3.08	1.28
CB-6	5.00	DMH-5 6.30	135.0	12.0	0.005	2.00	1.33
DMH-5	6.30	SAMH-4 7.70	35.0	12.0	0.005	1.33	1.15
SAMH-4	7.70	DMH-6 7.50	90.0	18.0	0.005	0.65	0.20
CB-7	6.55	DMH-6 7.50	50.0	12.0	0.010	2.55	2.05
DMH-6	7.50	SAMH-5 7.50	37.0	12.0	0.010	3.20	2.83
TR. CB-5	7.50	SAMH-5 7.50	82.0	18.0	0.005	0.20	-0.21
SAMH-5	7.50	DMH-7 6.30	140.0	18.0	0.007	-0.21	-1.19

DRAINAGE STRUCTURES

STR. NO.	FROM RIM	TO RIM	LENGTH (FT.)	DIA. (IN.)	SLOPE (FT./FT.)	INVERT ELEVATION FROM	INVERT ELEVATION TO
CB-9	7.40	DMH-7 6.30	20.0	12.0	0.010	3.40	3.20
TR. CB-6	7.50	DMH-7 6.30					
SAMH-6	6.00	SAMH-7 7.70	140.0	8.0	0.005	3.33	2.63
TR. CB-7	7.50	SAMH-7 7.70					
SAMH-7	7.70	SAMH-8 7.70	160.0	12.0	0.005	2.30	1.50
TR. CB-8	7.50	SAMH-8 7.70					
SAMH-8	7.70	SAMH-9 5.30	180.0	12.0	0.010	1.50	-0.30
SAMH-9	5.30	DMH-7 6.30	74.0	12.0	0.010	-0.30	-1.04
DMH-7	6.30	DMH-8 6.30	145.0	24.0	0.005	-2.04	-2.76
SAMH-10	6.30	DMH-8 6.30	90.0	12.0	0.005	3.30	2.85
SAMH-11	6.30	SAMH-12 6.30	340.0	12.0	0.005	3.30	1.60
SAMH-12	6.30	SAMH-13 6.00	15.0	12.0	0.005	1.60	1.53
SAMH-13	6.00	DMH-8 6.30	200.0	15.0	0.005	1.53	0.53
SAMH-14	6.30	DMH-9 6.30	90.0	12.0	0.005	3.30	2.85
SAMH-15	6.00	SAMH-16 6.30	340.0	12.0	0.005	3.00	1.30
SAMH-16	6.30	SAMH-17 6.00	15.0	12.0	0.005	1.30	1.23
SAMH-17	6.00	DMH-9 6.30	200.0	15.0	0.005	1.23	0.23
CB-13	5.00	DMH-9 6.30	80.0	12.0	0.010	2.00	1.20
CB-10	5.00	DMH-9 6.30	40.0	12.0	0.010	2.00	1.60
CB-11	5.00	DMH-10 5.00	215.0	12.0	0.005	2.00	0.93
CB-12	5.00	DMH-10 5.00	42.0	12.0	0.010	2.00	1.58
TR. CB-9	7.66	SAMH-5 7.50					

• AS PER TRACK DRAINAGE INSTALLER REQUIREMENTS

VALLEY LANDS PLAYING FIELDS PHASE I

Milwaukee Medical Research Foundation

DRAINAGE AND GRADING PLAN

Scale 1" = 30' Date 8-24-92
 Drawn By
 Checked By
 Approved By
 Project No. 11636.00

DWG No. C4-B

ISSUED FOR BID

DRAWING NAME:
 CREATED BY:
 LAST REV. DATE:

Sasaki Associates, Inc.

Planning / Architecture / Landscape Architecture
 Urban Design / Transportation Planning / Civil Engineering
 Environmental Services / Interior Design / Graphic Design

84 Phoenix Street, Watertown, Massachusetts 02172
 617/978 3300 Tele 617/2471 Fax 617/914 3748

- SYMBOLS LEGEND**
- PARKING LIGHT
 - ⊕ FIELD LIGHT
 - PEDESTRIAN LIGHT
 - BOLLARD LIGHT
 - BOLLARD
 - SANITARY MANHOLE
 - DRAIN MANHOLE
 - CLEANOUT
 - CATCH BASIN
 - ⊞ HAYBALE CATCH BASIN
 - ⊞ TRANSFORMER PAD
 - SERVICE RECEPTACLE
 - ⊕ SCOREBOARD / TIMING OUTLET
 - ⊞ WATER VALVE
 - ⊞ DRINKING FOUNTAIN
 - ⊞ FLUSH HYDRANT

No.	Description	Date
-----	-------------	------

REVISIONS

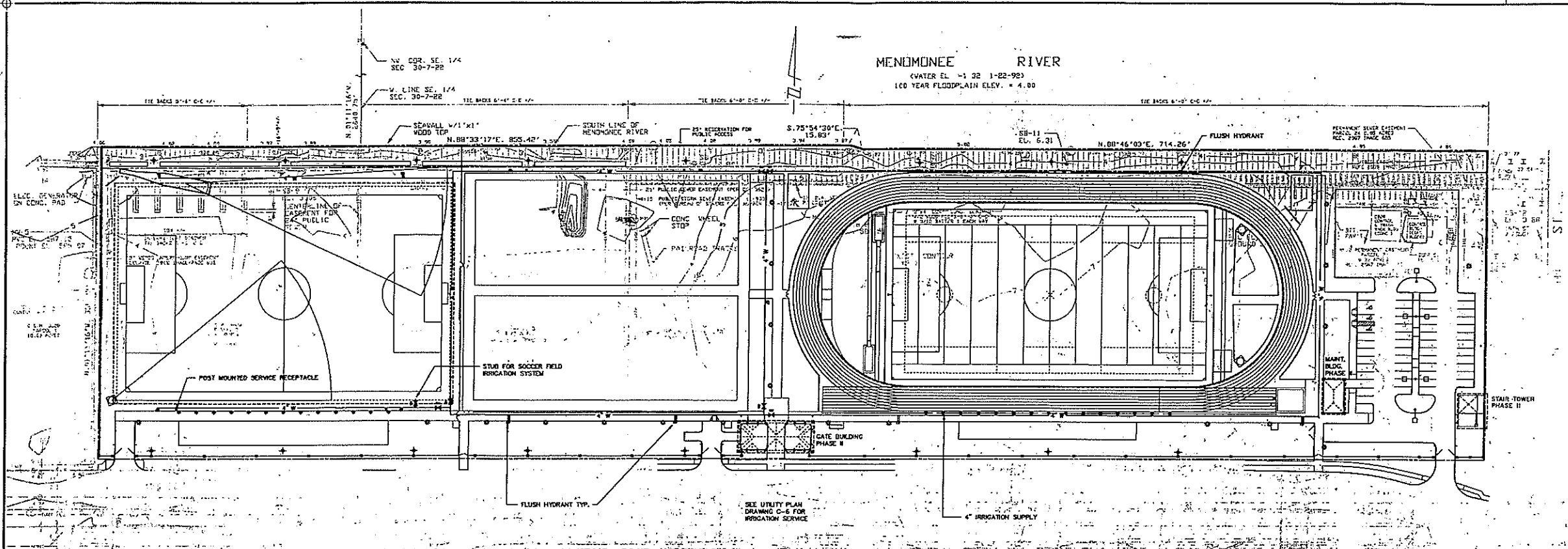
**VALLEY LANDS
 PLAYING FIELDS
 PHASE I**

Milwaukee Medical
 Research Foundation

TITLE:
 IRRIGATION SUPPLY
 PLAN

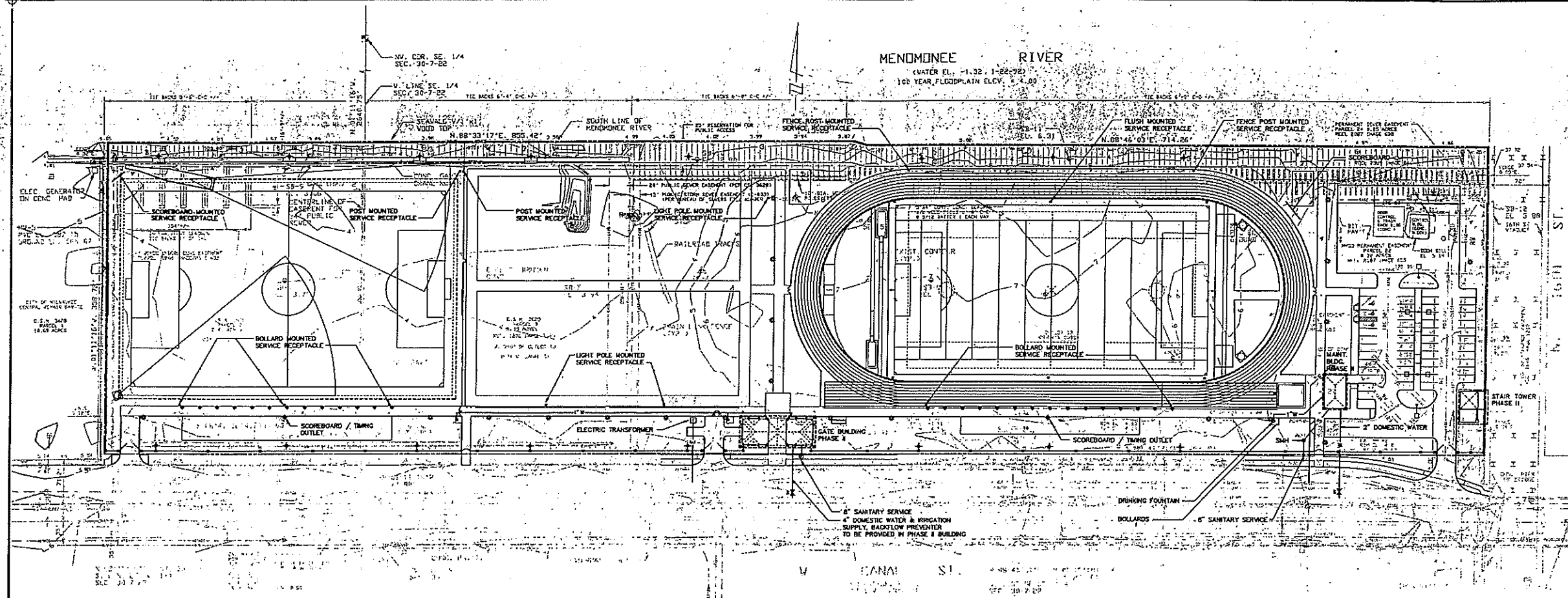
Scale 1"=50' Date 8-24-92
 Drawn By
 Checked By
 Approved By
 Project No. 11836.00

DWG No. C-5



DRAWING NAME
 CREATED BY
 LAST REV. DATE

ISSUED FOR BID



Sasaki Associates, Inc.
 Planning / Architecture / Landscape Architecture
 Urban Design / Transportation Planning / Civil Engineering
 Environmental Services / Interior Design / Graphic Design
 84 Pleasant Street, Milwaukee, Wisconsin 53226
 414/224-2300 - Telex 972473 Fax 414/224-2748

- SYMBOLS LEGEND**
- PARKING LIGHT
 - ⊕ FIELD LIGHT
 - PEDESTRIAN LIGHT
 - ⊕ BOLLARD LIGHT
 - BOLLARD
 - SANITARY MANHOLE
 - DRAIN MANHOLE
 - CLEANOUT
 - CATCH BASIN
 - ⊙ HAYBALE CATCH BASIN
 - TRANSFORMER PAD
 - ◆ SERVICE RECEPTACLE
 - ◆ SCOREBOARD / TIMING OUTLET
 - ⊕ WATER VALVE
 - ⊕ DRINKING FOUNTAIN
 - ⊕ FLUSH HYDRANT

No.	Description	Date
REVISIONS		

**VALLEY LANDS
PLAYING FIELDS
PHASE I**

Milwaukee Medical
Research Foundation

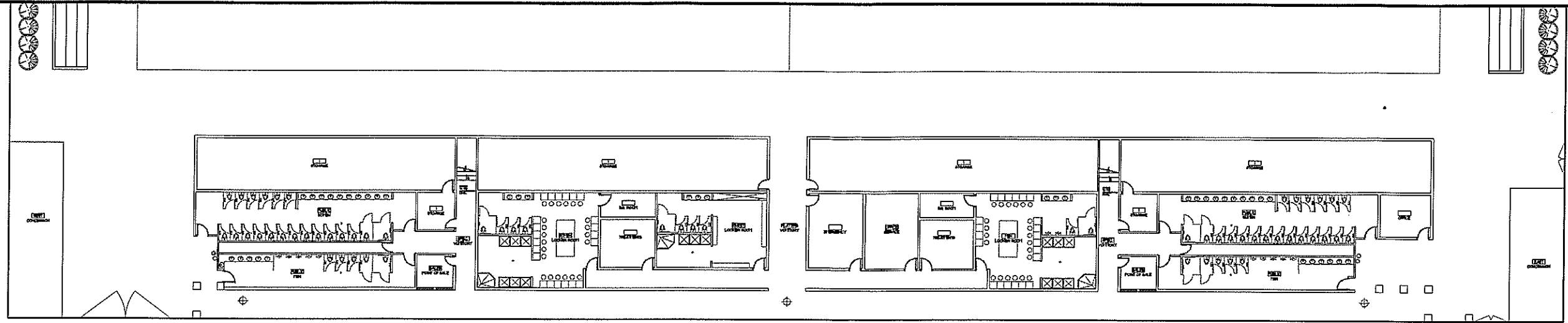
TITLE:
UTILITY PLAN

Scale 1"=50' Date 8-24-92
 Drawn By
 Checked By
 Approved By
 Project No. 11836.00

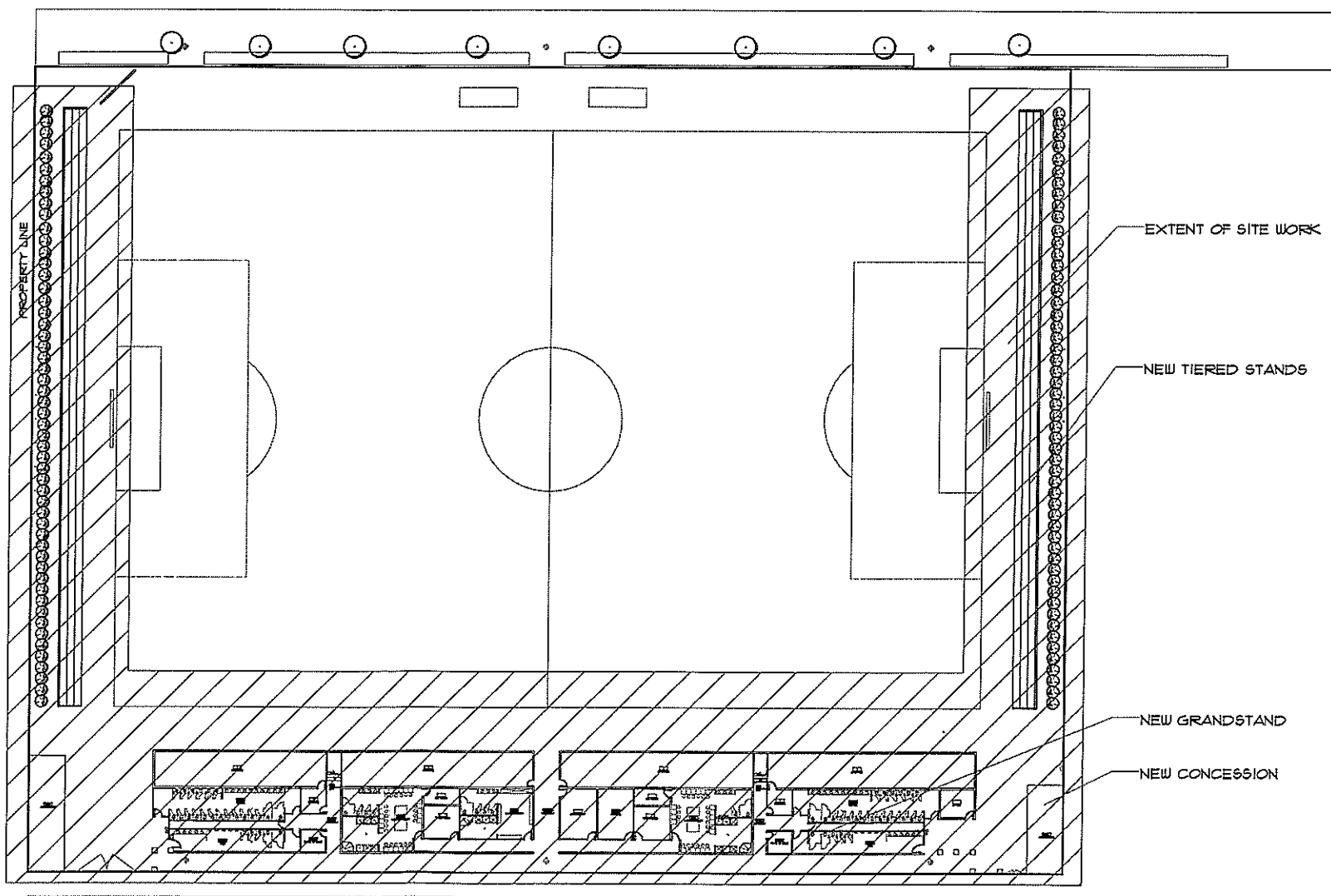
DWG No. **C-6**

DRAWING NAME
CREATED BY
LAST REV. DATE

ISSUED FOR BID



ENLARGED LOWER LEVEL FLOOR PLAN
SCALE: 1/32" = 1'-0" (A1.0)



EXTENT OF SITE WORK

NEW TIERED STANDS

NEW GRANDSTAND

NEW CONCESSION

PROPERTY LINE

LOWER LEVEL FLOOR PLAN
SCALE: 1/8" = 1'-0" (A1.0)

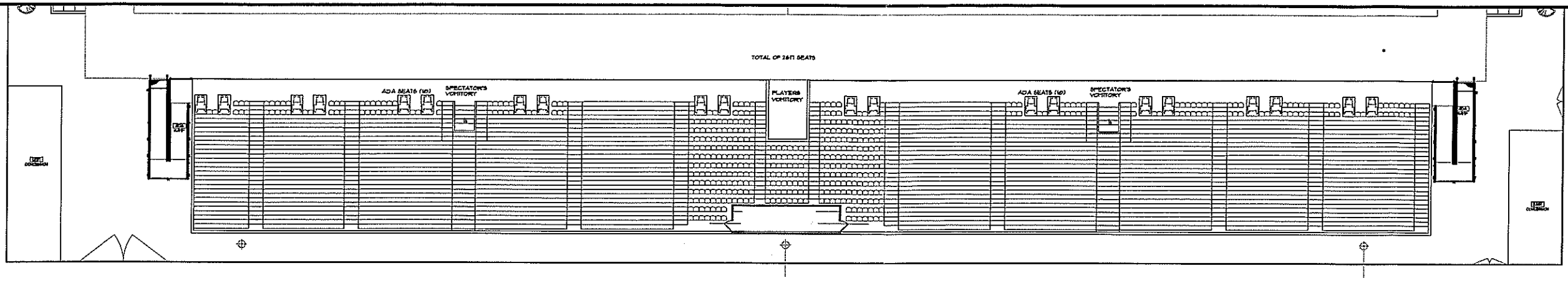
△	_____	_____
△	_____	_____
△	_____	_____
△	_____	_____
△	_____	_____
△	_____	_____
△	_____	_____
△	_____	_____
△	_____	_____
△	_____	_____
△	_____	_____
△	_____	_____
No.	DATE	ACTION
REVISIONS		
WORK BY:		

BARRIENTOS
Design & Consulting, INC
205 W Highland, Suite 303
Milwaukee, WI 53203
(414) 271-1812
FAX: (414) 271-1830

**MARQUETTE UNIVERSITY
VALLEY FIELDS**
PROJECT TITLE

BDC JOB NO.:
50374
DATE: 06.09.06
CONTENTS:
FLOOR PLANS

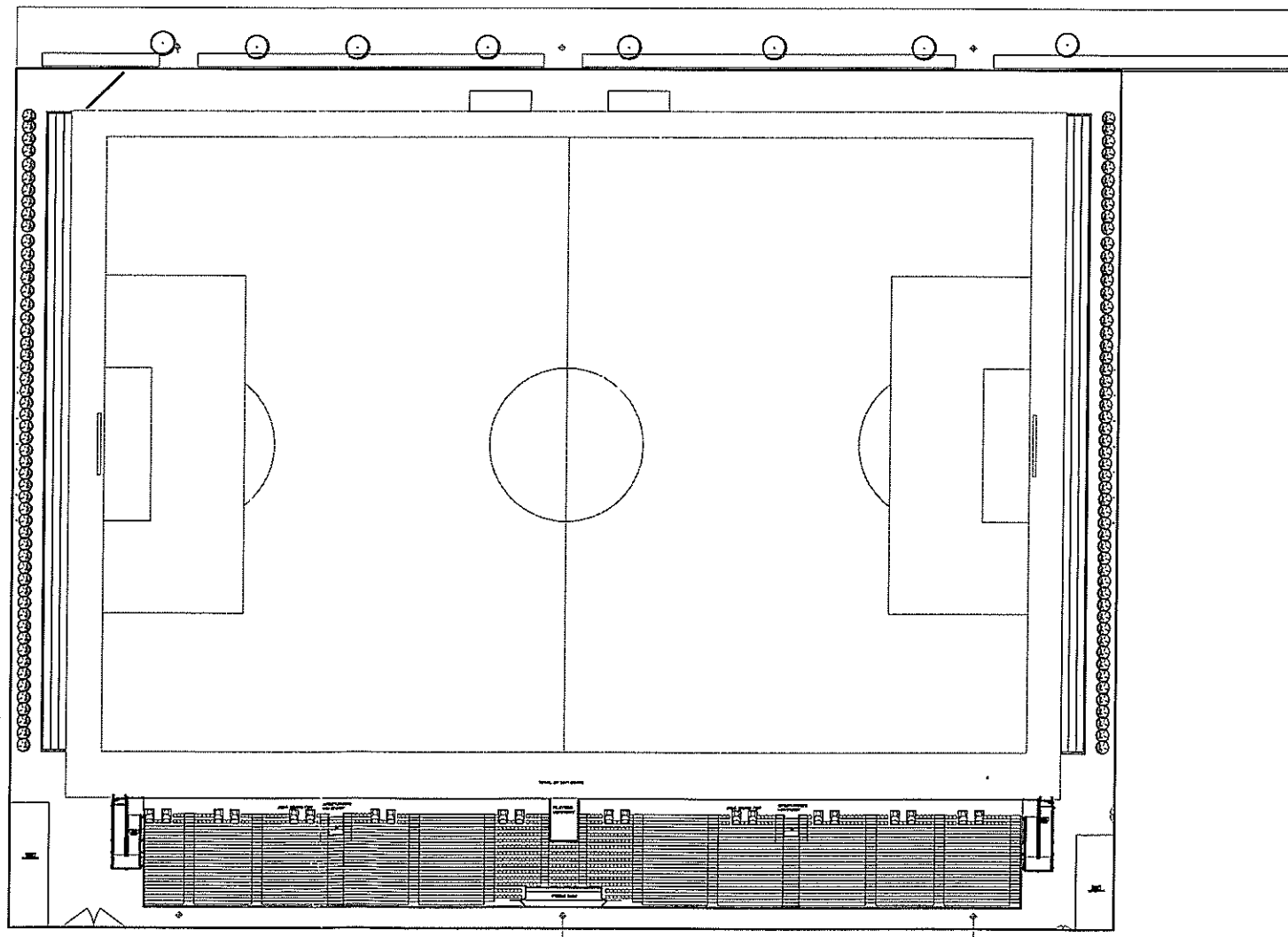
SHEET
A1.0
OF 00 IN SET



14'00" RISERS
ROWS 1 RAISED TO 35" ABOVE
GROUND

2471 SEATS - ABOUT 16-20 SPOTS
FOR SPECTATORS @ THE END
SEATS

ENLARGED UPPER LEVEL FLOOR PLAN (1)
SCALE: 1/32" = 1'-0" AU



14'00" RISERS
ROWS 1 RAISED TO 35" ABOVE
GROUND

2471 SEATS - ABOUT 16-20 SPOTS
FOR SPECTATORS @ THE END
SEATS

UPPER LEVEL FLOOR PLAN (1)
SCALE: 1/64" = 1'-0" AU

△		
△		
△		
△		
△		
△		
△		
△		
△		
No. DATE		ACTION
REVISIONS		
WORK BY:		

BARRIENTOS
Design & Consulting, INC

205 W Highland, Suite 303 □ Milwaukee, WI 53203
(414) 271-1812 □ FAX: (414) 271-1830

**MARQUETTE UNIVERSITY
VALLEY FIELDS**

PROJECT TITLE

BDC JOB NO.:
50374

DATE: 06.09.06

CONTENTS:
FLOOR PLANS

SHEET
A1.1
OF 00 IN SET