

**1901 South Kinnickinnic
Milwaukee Water Works – Meter Shop
Jurisdictional Transfer to DPW-Election Commission**

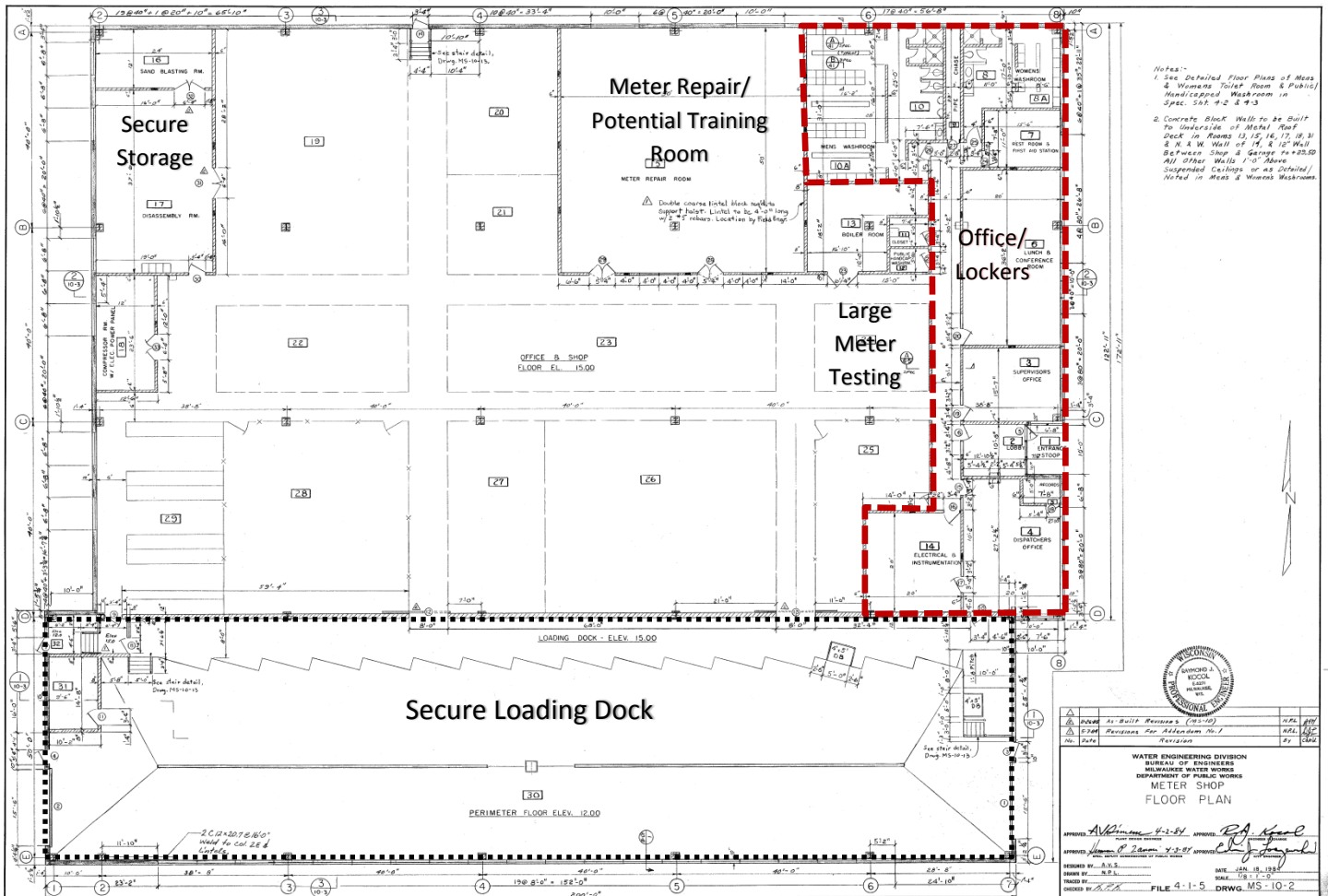
Site: 1.94-acre parcel
Access on Kinnickinnic and South 1st Street
Secure rear parking lot

Building: 34,000 SF under roof
Repair shop, warehouse & office
Constructed in 1984
Steel frame with precast concrete walls

Building Summary– approximate areas - SF

Warehouse/Assembly	19,856
Finished Office/Lockers	4,144
Building Area	24,000
Secure Loading	10,000
Gross Area	34,000

City communications conduit runs under dock area
Communications equipment in building



**1901 South Kinnickinnic
Milwaukee Water Works – Meter Shop
Jurisdictional Transfer to DPW-Election Commission**



Front Entrance/Dock Exit



Front Façade / Office Area



Rear Loading Dock Entrance



Open Warehouse Area



Warehouse Storage Cage



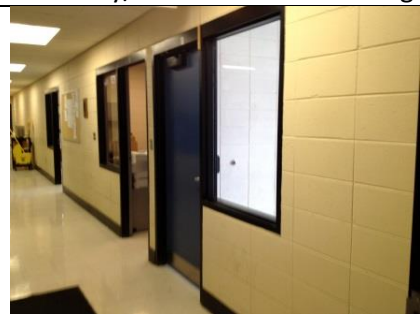
Assembly/Potential Secure Storage



Repair Area/Future Training Area



Breakroom



Office Corridor



Secure Loading Area



Drive-through Capability



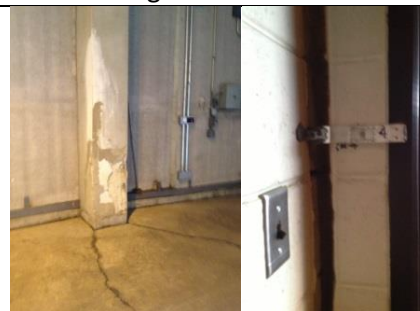
Rear Parking Lot



Large Meter Testing Facility



City Communications Equipment



Settling Issues in dock and rear