

Frank Productions Deer District (Block 3)

DPD ZONING SUBMITTAL FOR PORTION OF BLOCK 3 OF MILWAUKEE BUCKS ARENA DEVELOPMENT - GPD



SHEET INDEX

AS-1 CONTEXT PHOTOS

CIVIL DRAWINGS

- 1 PLAT OF SURVEY WITH TOPOGRAPHY
- C102 SITE LAYOUT PLAN
- C104 SITE GRADING PLAN
- C105 SITE UTILITY PLAN

LANDSCAPE DRAWINGS

- L101 LANDSCAPE PLAN
- L201 LANDSCAPE DETAILS

PEDESTRIAN ACCESS EXHIBIT

ARCHITECTURAL DRAWINGS

- A1-0 ARCHITECTURAL SITE PLAN
- A1-1 FIRST FLOOR TRANSPARENCY PLAN
- A1-2 FIRST AND SECOND FLOOR PLAN
- A1-3 MEZZANINE AND SUITE LEVEL
- A2-0 WEST AND EAST ELEVATION
- A2-1 NORTH AND EAST ELEVATION
- A2-2 SOUTH ELEVATION AND SITE SECTION
- A2-3 ARCHITECTURAL RENDERING
- A2-4 ARCHITECTURAL RENDERING
- A2-5 ARCHITECTURAL RENDERING
- A2-6 ARCHITECTURAL RENDERING
- A2-7 ARCHITECTURAL RENDERING
- A2-8 ARCHITECTURAL RENDERING
- A2-9 ARCHITECTURAL RENDERING



DPD ZONING SUBMITTAL

10/17/2022

PROJECT NUMBER: 2-20225-02



milwaukee | madison | green bay | denver | atlanta

PROJECT INFORMATION

Frank Productions
Deer District (Block 3)



ISSUANCE AND REVISIONS

DATE	DESCRIPTION
10/17/2022	DPD ZONING SUBMITTAL

DPD ZONING SUBMITTAL
FOR PORTION OF BLOCK 3
OF MILWAUKEE BUCKS
ARENA DEVELOPMENT - GPD

KEY PLAN

**PROGRESS DOCUMENTS
NOT FOR CONSTRUCTION**

These documents reflect progress and intent and may be subject to change, including additional detail. These are not final construction documents and shall not be used for final bidding or construction-related purposes.

SHEET INFORMATION

PROJECT MANAGER MJL

PROJECT NUMBER 2-20225-02

ARCHITECTURAL
SITE PLAN

A1-0

© 2022 Epstein Uhen Architects, Inc.



E

D

C

B

A

E

D

C

B

A

1

2

3

4

5

6

7

1

2

3

4

5

6

7

PROJECT INFORMATION

Frank Productions
Deer District (Block 3)



ISSUANCE AND REVISIONS

DATE	DESCRIPTION
10/17/2022	DPD ZONING SUBMITTAL

DPD ZONING SUBMITTAL
FOR PORTION OF BLOCK 3
OF MILWAUKEE BUCKS
ARENA DEVELOPMENT - GPD

KEY PLAN

PROGRESS DOCUMENTS
NOT FOR CONSTRUCTION

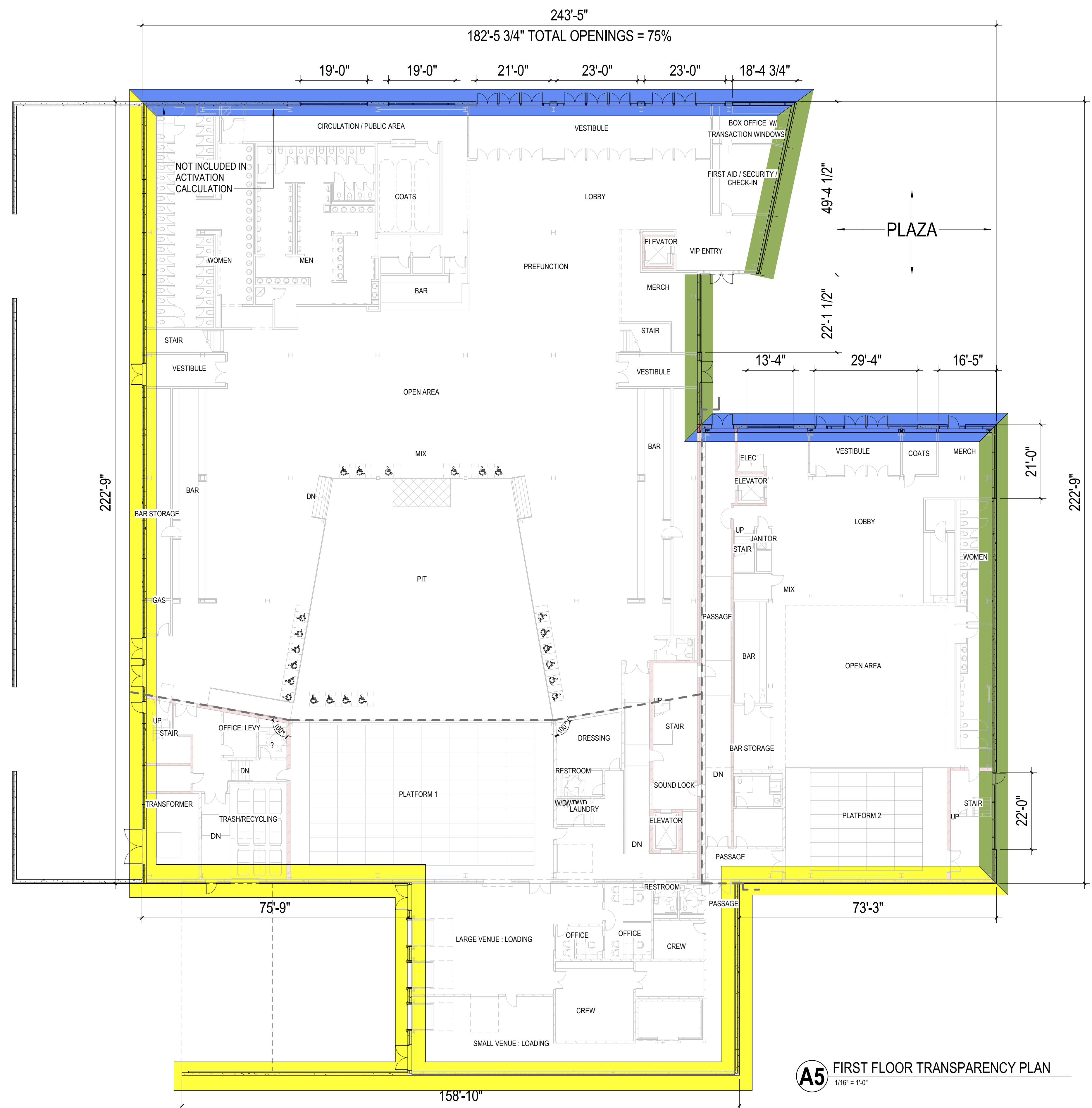
These documents reflect progress and intent and may be subject to change, including additional detail. These are not final construction documents and shall not be used for final bidding or construction-related purposes.

SHEET INFORMATION

PROJECT MANAGER MJL
PROJECT NUMBER 2-20225-02

FIRST FLOOR
TRANSPARENCY
PLAN

A1-1



	Overall Length	Total Window Opening Length	Transparency Activation(%)
North Facade	243'-5"	182'-5 3/4"	75%
Total	243'-5"	182'-5 3/4"	75%

	Overall Length	Total Window Opening Length	Transparency Activation(%)
East Facade	222'-9"	114'-6"	51.4%
Total	222'-9"	114'-6"	51.4%

LOW ACTIVATION AREA
No Glazing Requirements

A5 FIRST FLOOR TRANSPARENCY PLAN
1/16" = 1'-0"



milwaukee | madison | green bay | denver | atlanta

PROJECT INFORMATION

Frank Productions
Deer District (Block 3)



ISSUANCE AND REVISIONS

DATE	DESCRIPTION
10/17/2022	DPD ZONING SUBMITTAL

DPD ZONING SUBMITTAL
FOR PORTION OF BLOCK 3
OF MILWAUKEE BUCKS
ARENA DEVELOPMENT - GPD

KEY PLAN

B

**PROGRESS DOCUMENTS
NOT FOR CONSTRUCTION**

These documents reflect progress and intent and may be subject to change, including additional detail. These are not final construction documents and shall not be used for final bidding or construction-related purposes.

SHEET INFORMATION

PROJECT MANAGER MJL

PROJECT NUMBER 2-20225-02

FIRST AND SECOND
FLOOR PLAN

A1-2

© 2022 Epstein Uhen Architects, Inc.

E

D

C

B

A

1

2

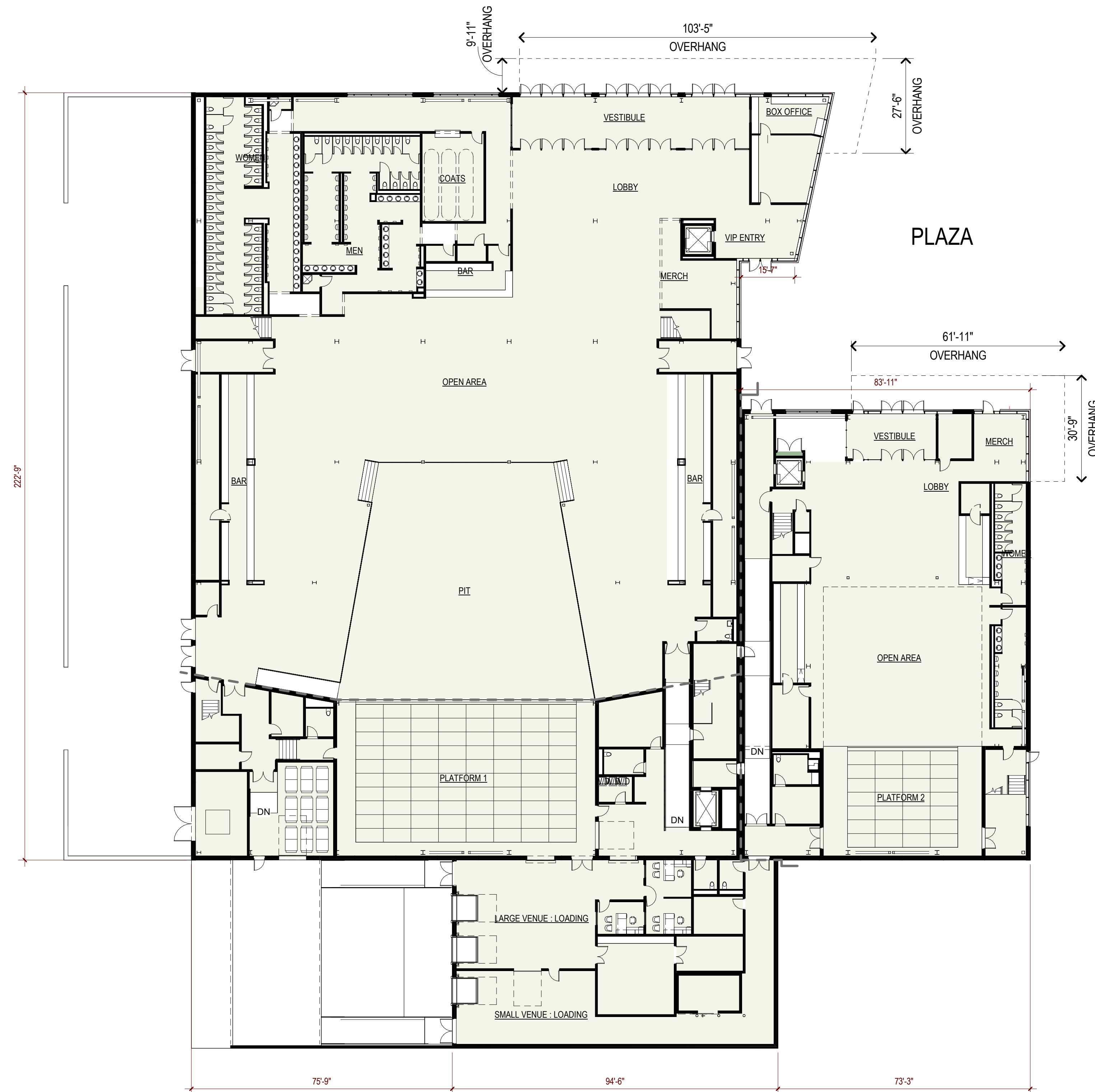
3

4

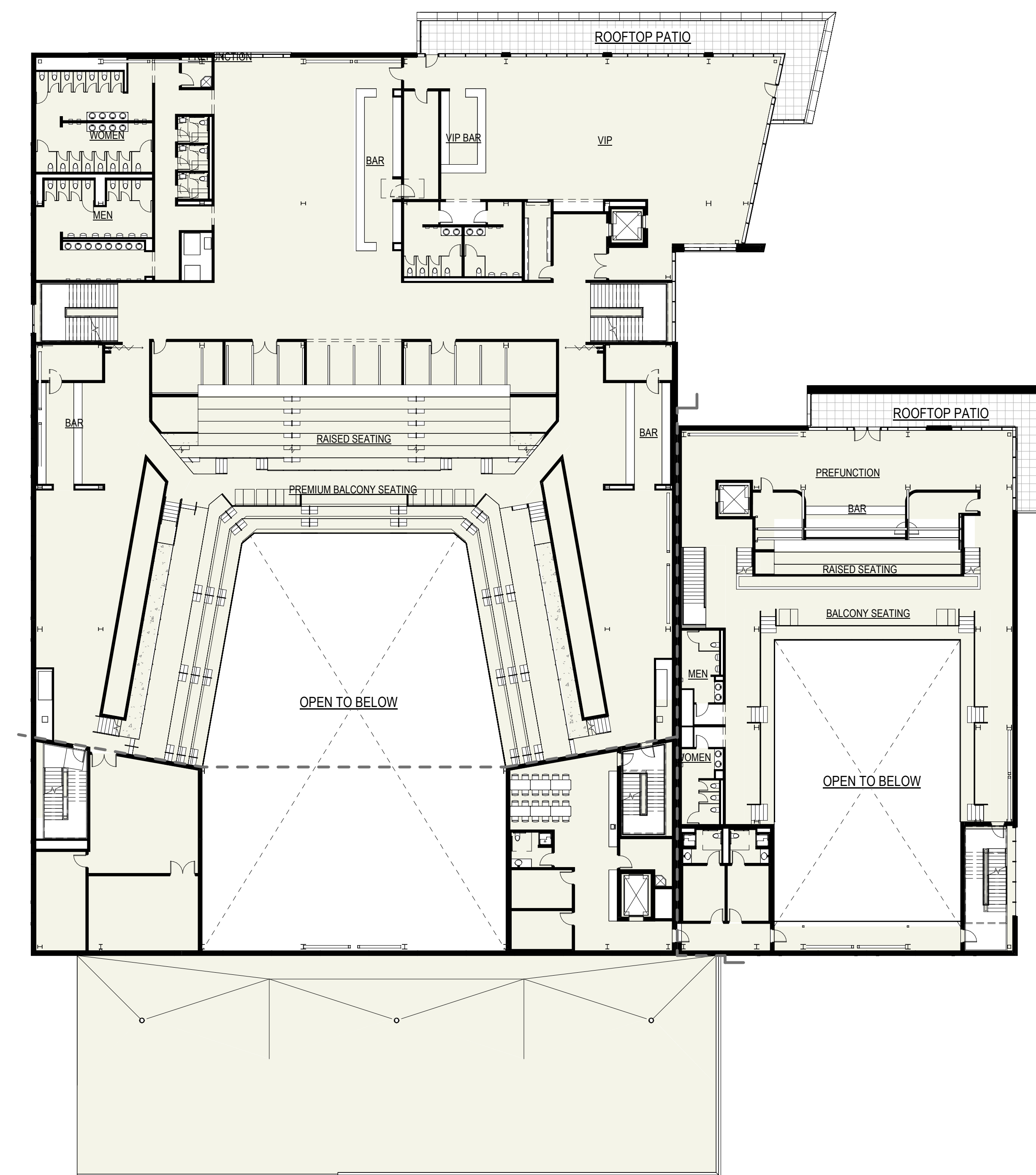
5

6

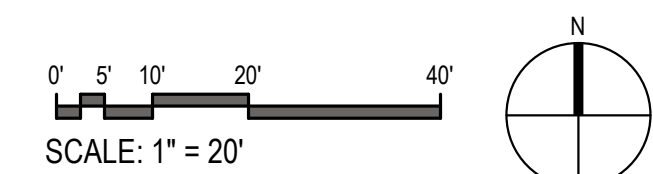
7



A1 1ST FLR PLAN PRESENTATION
1" = 20'-0"



A5 2ND FLR PLAN Presentation
1" = 20'-0"





milwaukee | madison | green bay | denver | atlanta

PROJECT INFORMATION

Frank Productions
Deer District (Block 3)



ISSUANCE AND REVISIONS

DATE	DESCRIPTION
10/17/2022	DPD ZONING SUBMITTAL

DPD ZONING SUBMITTAL
FOR PORTION OF BLOCK 3
OF MILWAUKEE BUCKS
ARENA DEVELOPMENT - GPD

KEY PLAN

**PROGRESS DOCUMENTS
NOT FOR CONSTRUCTION**

These documents reflect progress and intent and may be subject to change, including additional detail. These are not final construction documents and shall not be used for final bidding or construction-related purposes.

SHEET INFORMATION

PROJECT MANAGER MJL
PROJECT NUMBER 2-20225-02

MEZZANINE & SUITE
LEVEL

A1-3

© 2022 Epstein Uhen Architects, Inc.

1 2 3 4 5 6 7

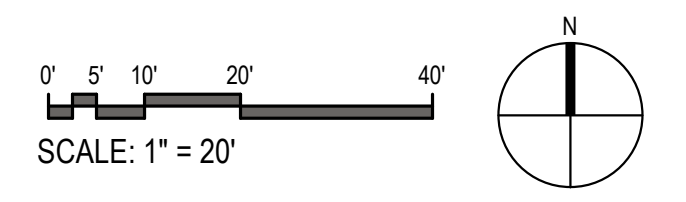
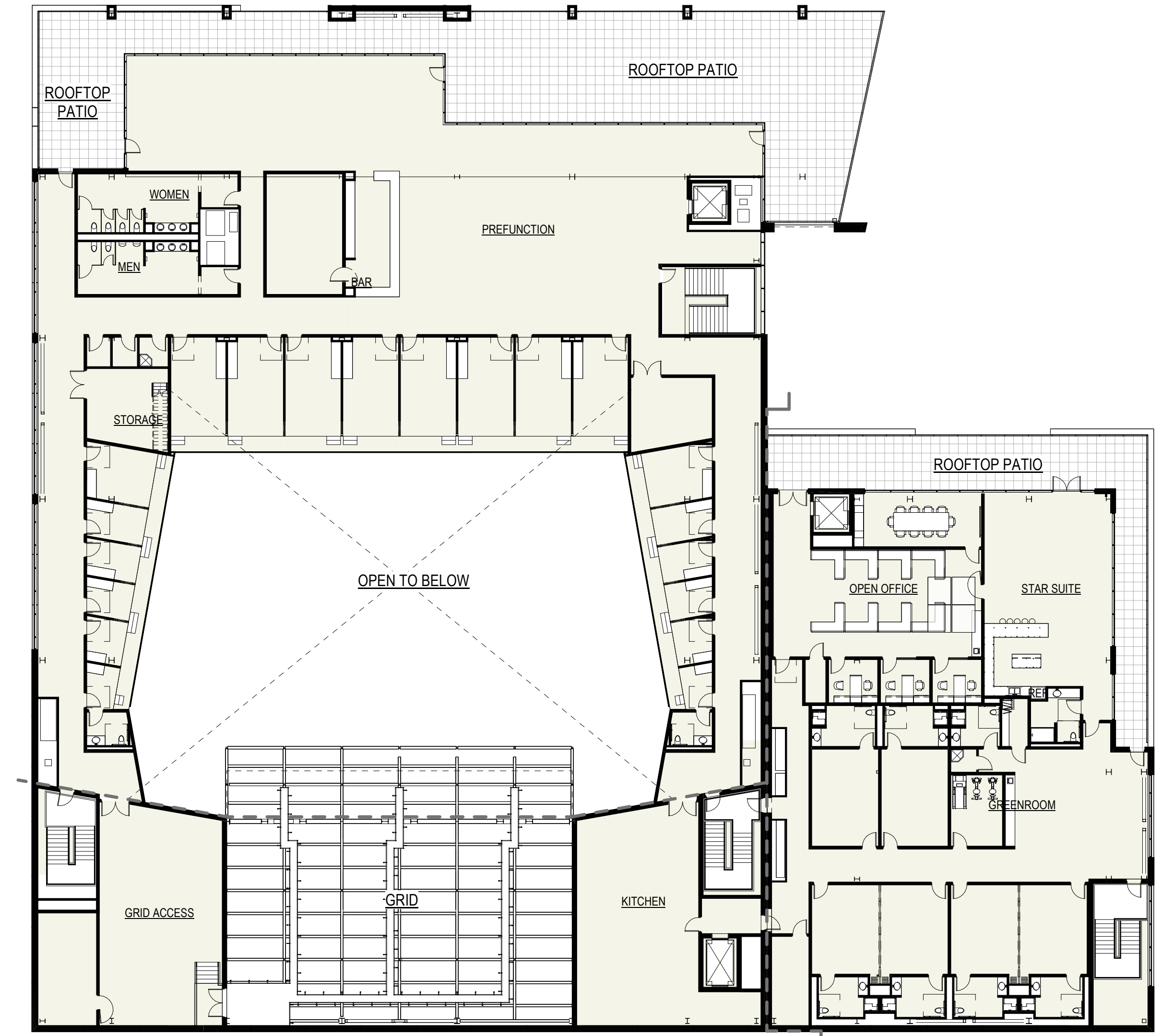
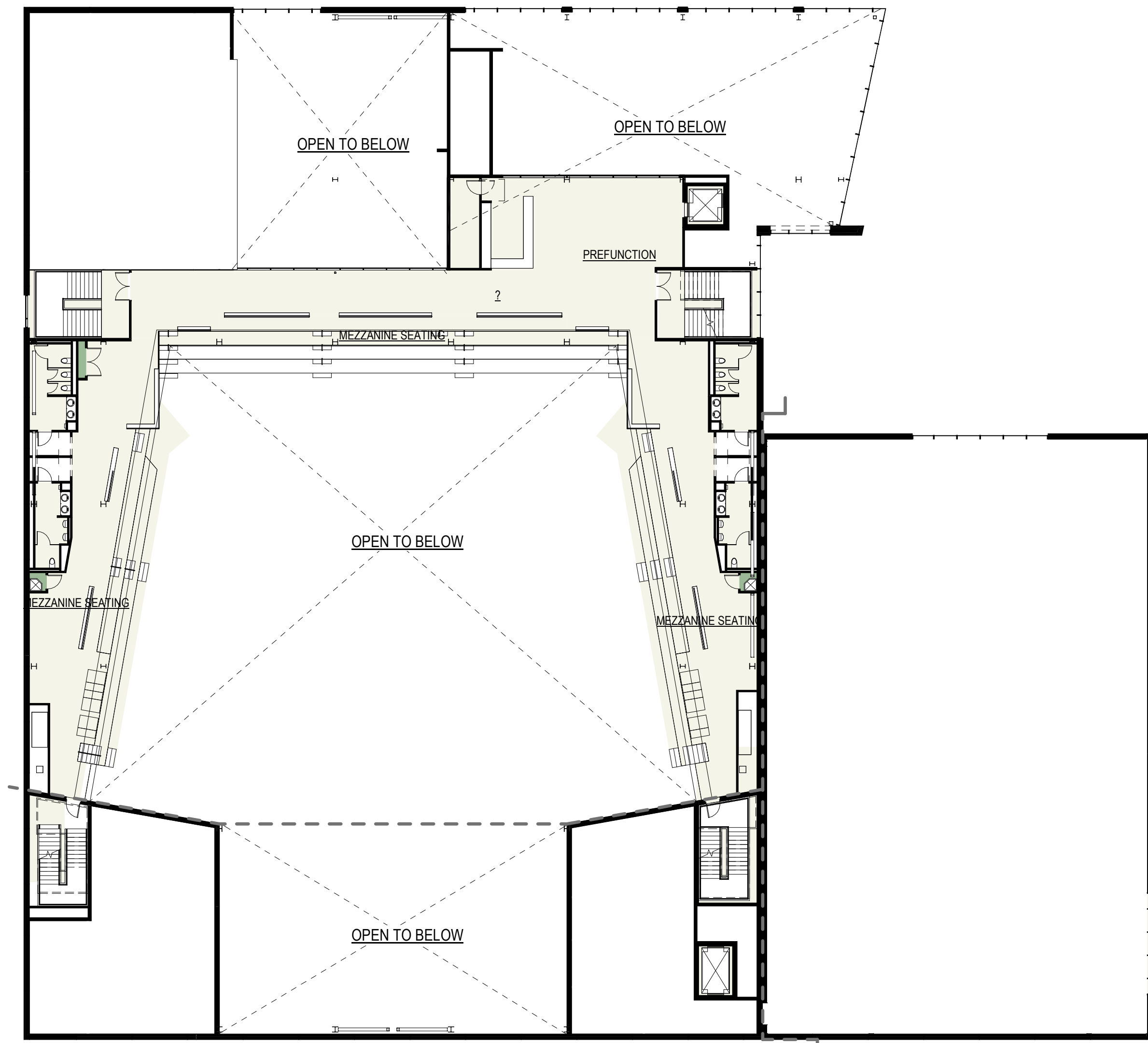
E

D

C

B

A



E PROJECT INFORMATION

Frank Productions
Deer District (Block 3)



ISSUANCE AND REVISIONS

DATE	DESCRIPTION
10/17/2022	DPD ZONING SUBMITTAL
10/18/2022	DPD ZONING SUBMITTAL UPDATES

**DPD ZONING SUBMITTAL
FOR PORTION OF BLOCK 3
OF MILWAUKEE BUCKS
ARENA DEVELOPMENT - GPD**

KEY PLAN

B

**PROGRESS DOCUMENTS
NOT FOR CONSTRUCTION**

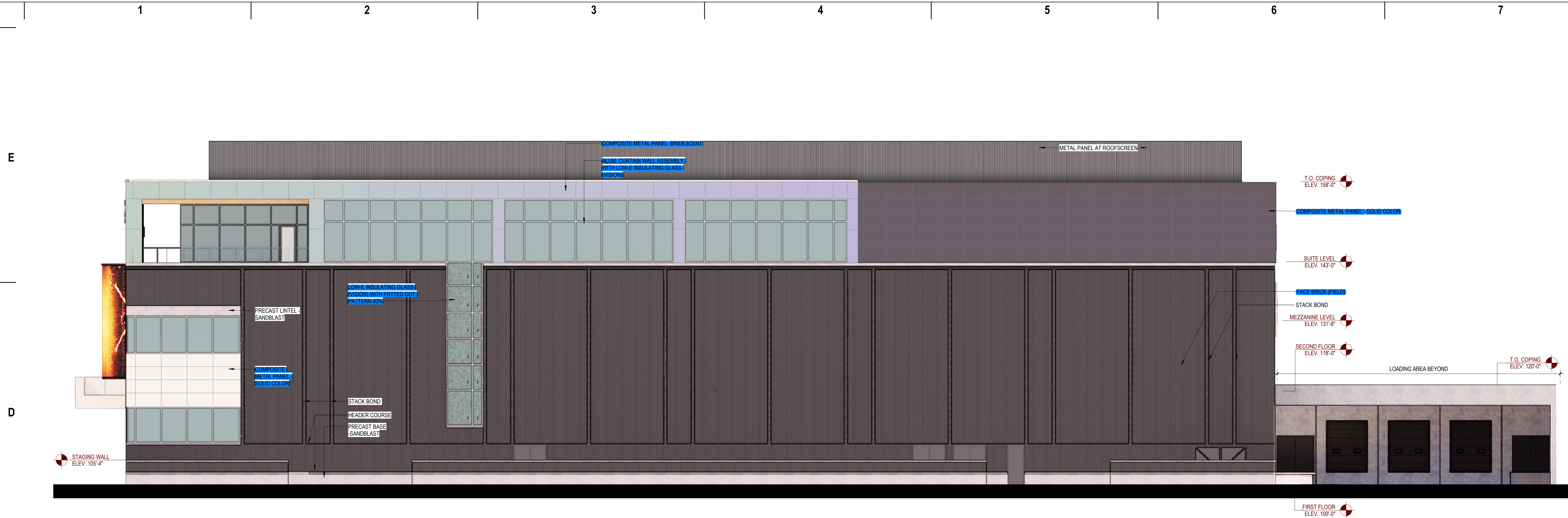
These documents reflect progress and intent and may be subject to change, including additional detail. These are not final construction documents and shall not be used for final bidding or construction-related purposes.

SHEET INFORMATION

PROJECT MANAGER MJL
PROJECT NUMBER 2-20225-02

**WEST & EAST
ELEVATION**

A2-0



West Elevation



East Elevation

E PROJECT INFORMATION

Frank Productions
Deer District (Block 3)



ISSUANCE AND REVISIONS

DATE	DESCRIPTION
10/17/2022	DPD ZONING SUBMITTAL
10/18/2022	DPD ZONING SUBMITTAL UPDATES

DPD ZONING SUBMITTAL FOR PORTION OF BLOCK 3 OF MILWAUKEE BUCKS ARENA DEVELOPMENT - GPD

KEY PLAN

PROGRESS DOCUMENTS NOT FOR CONSTRUCTION
These documents reflect progress and intent and may be subject to change, including additional detail. These are not final construction documents and shall not be used for final bidding or construction-related purposes.

SHEET INFORMATION

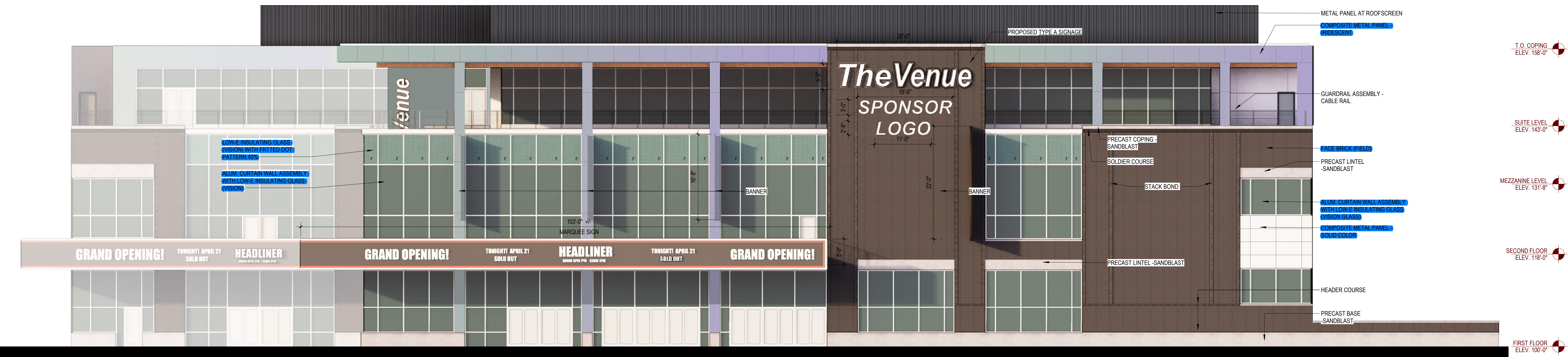
PROJECT MANAGER: MJL
PROJECT NUMBER: 2-20225-02

NORTH & EAST ELEVATION

A2-1

E

D



North Elevation

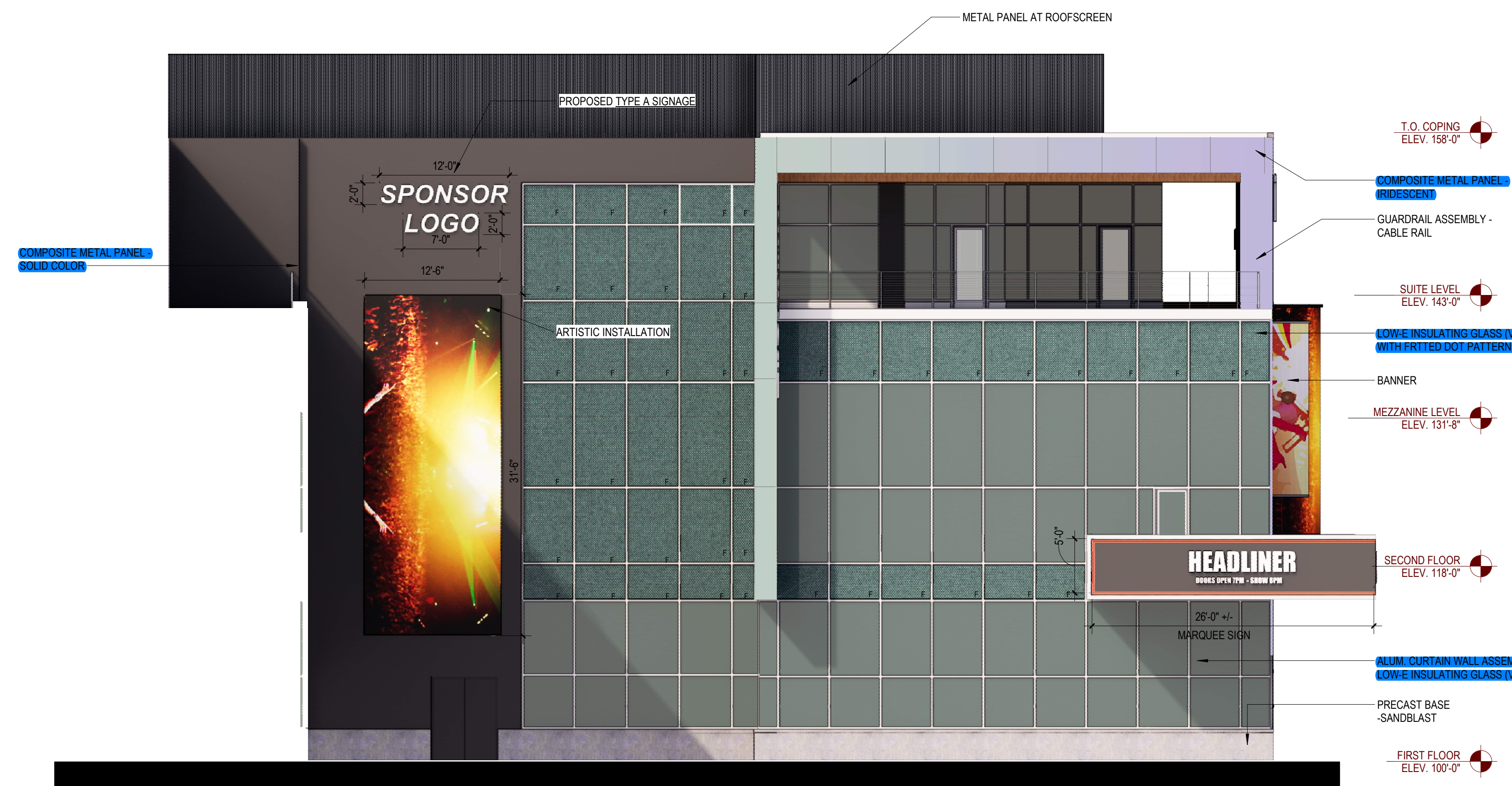
C

B

A



Partial North Elevation - Plaza



Partial East Elevation - Plaza



milwaukee | madison | green bay | denver | atlanta

PROJECT INFORMATION

Frank Productions
Deer District (Block 3)



ISSUANCE AND REVISIONS

DATE	DESCRIPTION
10/17/2022	DPD ZONING SUBMITTAL
10/18/2022	DPD ZONING SUBMITTAL UPDATES

DPD ZONING SUBMITTAL
FOR PORTION OF BLOCK 3
OF MILWAUKEE BUCKS
ARENA DEVELOPMENT - GPD

KEY PLAN

**PROGRESS DOCUMENTS
NOT FOR CONSTRUCTION**

These documents reflect progress and intent and may be subject to change, including additional detail. These are not final construction documents and shall not be used for final bidding or construction-related purposes.

SHEET INFORMATION

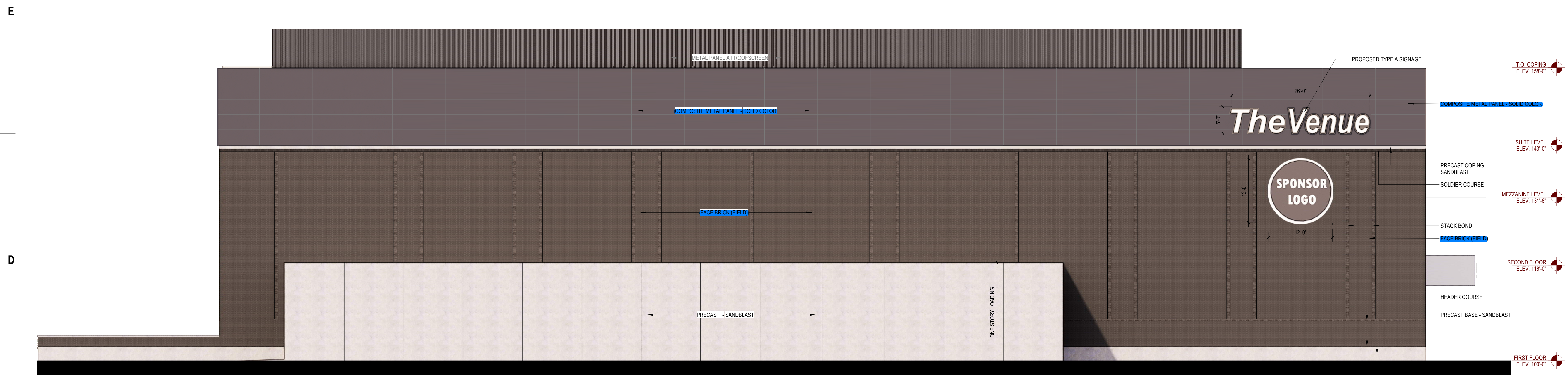
PROJECT MANAGER MJL

PROJECT NUMBER 2-20225-02

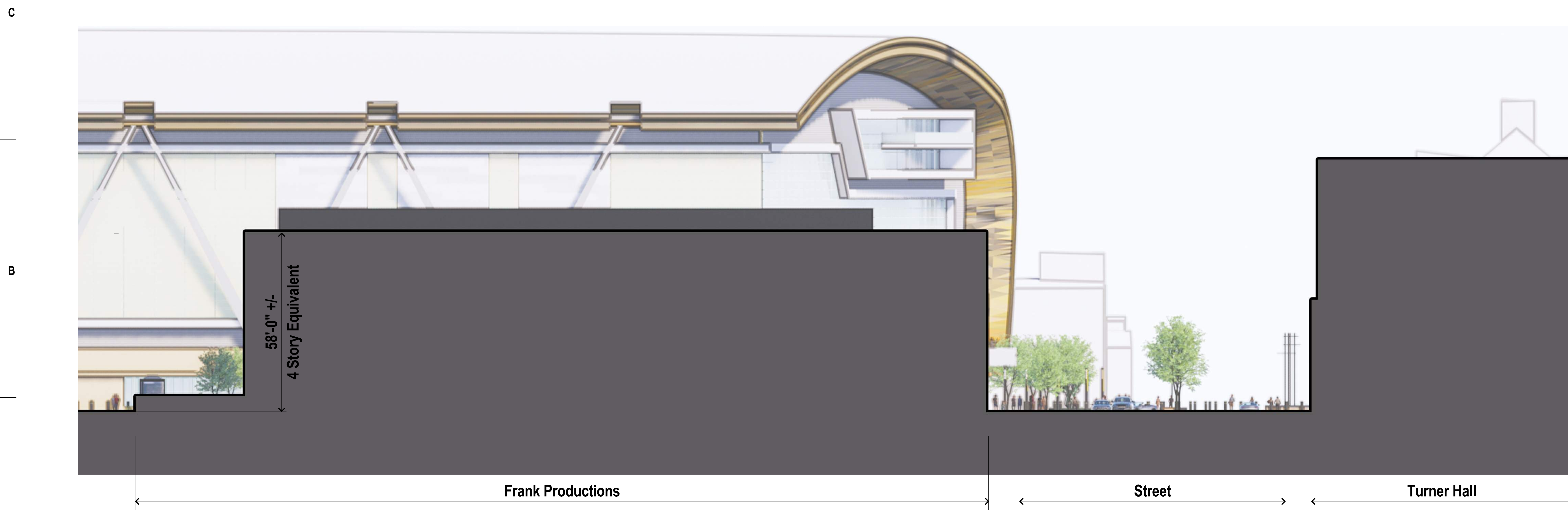
SOUTH ELEVATION
& SITE SECTION

A2-2

© 2022 Epstein Uhen Architects, Inc.



South Elevation



Site Section



milwaukee | madison | green bay | denver | atlanta

PROJECT INFORMATION

Frank Productions
Deer District (Block 3)



ISSUANCE AND REVISIONS

DATE	DESCRIPTION
10/17/2022	DPD ZONING SUBMITTAL

DPD ZONING SUBMITTAL
FOR PORTION OF BLOCK 3
OF MILWAUKEE BUCKS
ARENA DEVELOPMENT - GPD

KEY PLAN

**PROGRESS DOCUMENTS
NOT FOR CONSTRUCTION**

These documents reflect progress and intent and may be subject to change, including additional detail. These are not final construction documents and shall not be used for final bidding or construction-related purposes.

SHEET INFORMATION

PROJECT MANAGER MJL

PROJECT NUMBER 2-20225-02

ARCHITECTURAL
RENDERING

A2-3

© 2022 Epstein Uhen Architects, Inc.



AERIAL VIEW FROM NORTH

PROJECT INFORMATION

Frank Productions
Deer District (Block 3)



ISSUANCE AND REVISIONS

DATE	DESCRIPTION
10/17/2022	OPD ZONING SUBMITTAL

KEY PLAN

**PROGRESS DOCUMENTS
NOT FOR CONSTRUCTION**

These documents reflect progress and intent and may be subject to change, including additional detail. These are not final construction documents and shall not be used for final bidding or construction-related purposes.

SHEET INFORMATION

PROJECT MANAGER MJL

PROJECT NUMBER 2-20225-02

**ARCHITECTURAL
RENDERING**

A2-4



AERIAL VIEW FROM EAST

1

2

3

4

5

6

7



milwaukee | madison | green bay | denver | atlanta

E

PROJECT INFORMATION

Frank Productions
Deer District (Block 3)



ISSUANCE AND REVISIONS

DATE	DESCRIPTION
10/17/2022	DPD ZONING SUBMITTAL

D

C

KEY PLAN

C

B

**PROGRESS DOCUMENTS
NOT FOR CONSTRUCTION**

These documents reflect progress and intent and may be subject to change, including additional detail. These are not final construction documents and shall not be used for final bidding or construction-related purposes.

SHEET INFORMATION

B

A

PROJECT MANAGER MJL

PROJECT NUMBER 2-20225-02

ARCHITECTURAL
RENDERING

A2-5

© 2022 Epstein Uhen Architects, Inc.



VIEW FROM SOUTH

1

2

3

4

5

6

7

1

2

3

4

5

6

7



milwaukee | madison | green bay | denver | atlanta

E

PROJECT INFORMATION

Frank Productions
Deer District (Block 3)



ISSUANCE AND REVISIONS

DATE	DESCRIPTION
10/17/2022	OPD ZONING SUBMITTAL

KEY PLAN

**PROGRESS DOCUMENTS
NOT FOR CONSTRUCTION**

These documents reflect progress and intent and may be subject to change, including additional detail. These are not final construction documents and shall not be used for final bidding or construction-related purposes.

SHEET INFORMATION

PROJECT MANAGER MJL

PROJECT NUMBER 2-20225-02

ARCHITECTURAL
RENDERING

A2-6

© 2022 Epstein Uhen Architects, Inc.



VIEW FROM NORTHWEST

A

A

1

2

3

4

5

6

7

1

2

3

4

5

6

7



milwaukee | madison | green bay | denver | atlanta

E

PROJECT INFORMATION

Frank Productions
Deer District (Block 3)



ISSUANCE AND REVISIONS

DATE	DESCRIPTION
10/17/2022	DPD ZONING SUBMITTAL

DPD ZONING SUBMITTAL
FOR PORTION OF BLOCK 3
OF MILWAUKEE BUCKS
ARENA DEVELOPMENT - GPD

KEY PLAN

**PROGRESS DOCUMENTS
NOT FOR CONSTRUCTION**

These documents reflect progress and intent and may be subject to change, including additional detail. These are not final construction documents and shall not be used for final bidding or construction-related purposes.

SHEET INFORMATION

PROJECT MANAGER MJL

PROJECT NUMBER 2-20225-02

ARCHITECTURAL
RENDERING

A2-7

© 2022 Epstein Uhen Architects, Inc.



AERIAL VIEW FROM NORTHEAST

A

1

2

3

4

5

6

7

1

2

3

4

5

6

7



milwaukee | madison | green bay | denver | atlanta

E

PROJECT INFORMATION

Frank Productions
Deer District (Block 3)



ISSUANCE AND REVISIONS

DATE	DESCRIPTION
10/17/2022	OPD ZONING SUBMITTAL

KEY PLAN

**PROGRESS DOCUMENTS
NOT FOR CONSTRUCTION**

These documents reflect progress and intent and may be subject to change, including additional detail. These are not final construction documents and shall not be used for final bidding or construction-related purposes.

SHEET INFORMATION

PROJECT MANAGER MJL

PROJECT NUMBER 2-20225-02

ARCHITECTURAL
RENDERING

A2-8

© 2022 Epstein Uhen Architects, Inc.



AERIAL VIEW FROM SOUTHEAST

A

1

2

3

4

5

6

7

1

2

3

4

5

6

7



milwaukee | madison | green bay | denver | atlanta

E

PROJECT INFORMATION

Frank Productions
Deer District (Block 3)



ISSUANCE AND REVISIONS

DATE	DESCRIPTION
10/17/2022	DPD ZONING SUBMITTAL

KEY PLAN

**PROGRESS DOCUMENTS
NOT FOR CONSTRUCTION**

These documents reflect progress and intent and may be subject to change, including additional detail. These are not final construction documents and shall not be used for final bidding or construction-related purposes.

SHEET INFORMATION

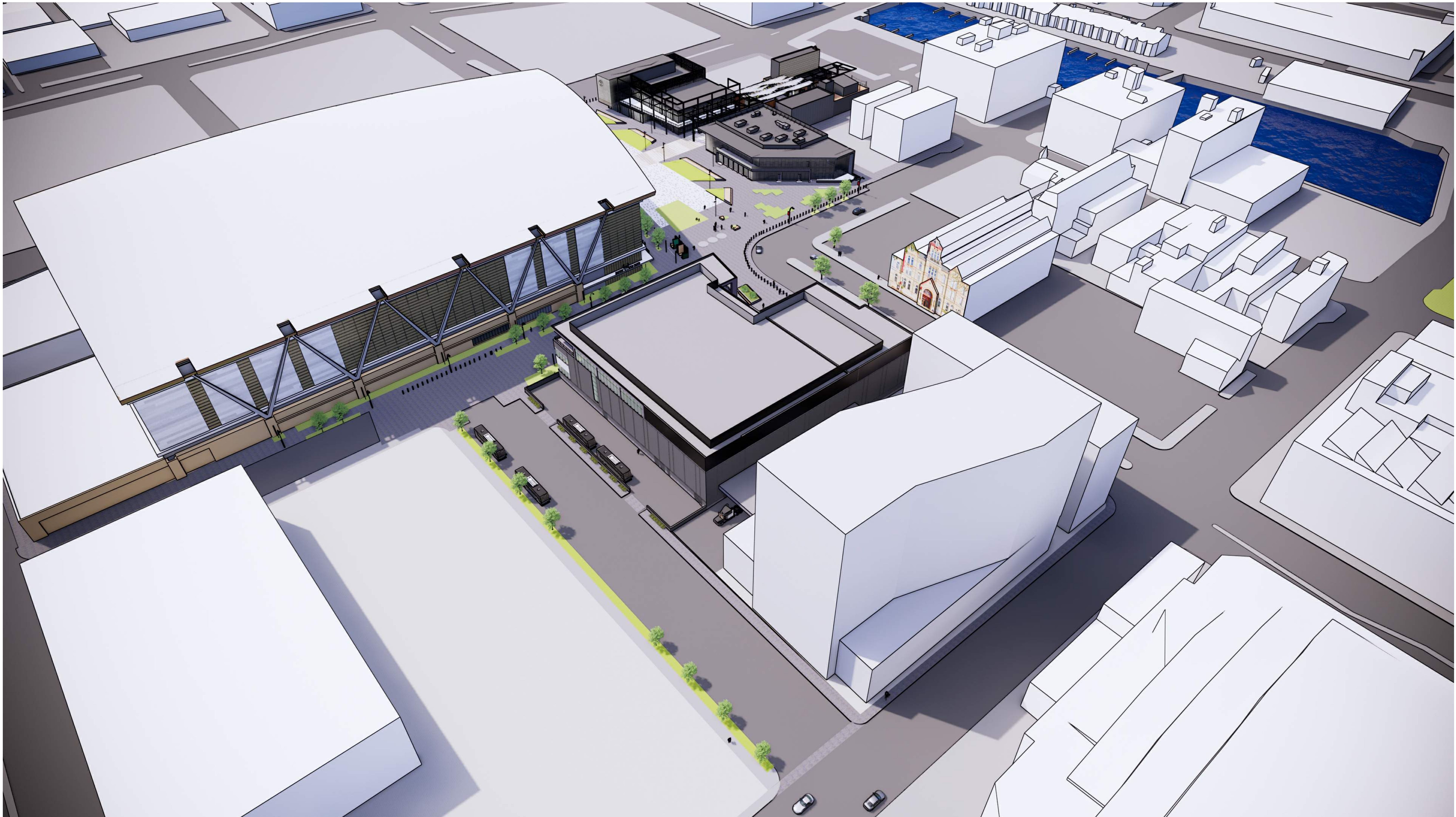
PROJECT MANAGER MJL

PROJECT NUMBER 2-20225-02

ARCHITECTURAL
RENDERING

A2-9

© 2022 Epstein Uhen Architects, Inc.



AERIAL VIEW FROM SOUTHWEST

A

A

1

2

3

4

5

6

7