

Block A

Phase 7

VICINITY MAP



7/19/201

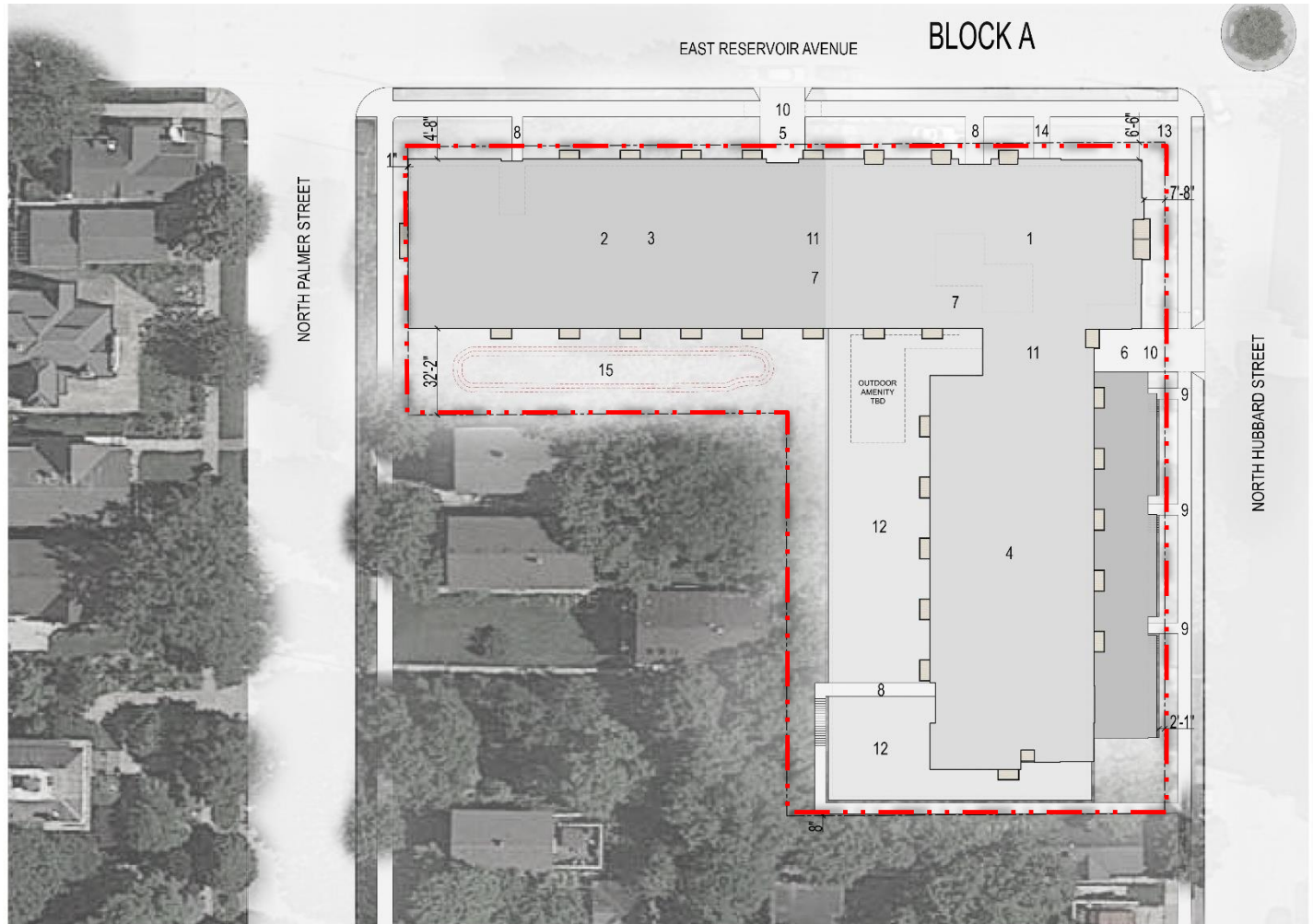
SITE PLAN

SITE PLAN KEY

1. BUILDING (FIVE FLOORS)
2. BUILDING (THREE FLOORS)
3. PARKING GARAGE 1
4. PARKING GARAGE 2
5. GARAGE 1 ENTRANCE
6. GARAGE 2 ENTRANCE
7. INTERIOR BICYCLE PARKING
8. MAIN PEDESTRIAN ENTRANCE
9. WALK UP UNITS
10. REFUSE COLLECTION
11. LOADING FACILITY
12. COMMUNITY DECK (ONE FLOOR)
13. OUTDOOR SPACE
14. RETAIL ENTRY
15. RETENTION POND

108 PARKING SPACES

- 28 SPACES- GARAGE 1
80 SPACES- GARAGE 2



DENSITY COMPARISON

Block A - Originally Planned & Approved

Unit Type	Total Units	Bedrooms per Unit Type	Total Bedrooms
Studio	0	1	0
1-Bedroom	21	1	21
2-Bedroom	46	2	92
3-Bedroom (TH)	6	3	18
Total	73		131

Block A - The Hills Luxury Commons

Unit Type	Total Units	Bedrooms per Unit Type	Total Bedrooms
Junior 1-Bedroom	75	1	75
1-Bedroom	6	1	6
1-Bedroom + Den	3	1	3
2-Bedroom	10	2	20
2-Bedroom (W/Up)	3	2	6
Total	97		110

Block B - Originally Planned & Approved

Unit Type	Total Units	Bedrooms per Unit Type	Total Bedrooms
Studio	0	1	0
1-Bedroom	56	1	56
2-Bedroom	14	2	28
3-Bedroom	0	3	0
Total	70		84

Block B - The Hills Luxury Commons

Unit Type	Total Units	Bedrooms per Unit Type	Total Bedrooms
Junior 1-Bedroom	32	1	32
1-Bedroom	40	1	40
1-Bedroom (W/Ups)	8	1	8
3-Bedroom	4	3	12
Total	84		92

Total - Originally Planned & Approved

Unit Type	Total Units	Bedrooms per Unit Type	Total Bedrooms
Studio	0	1	0
1-Bedroom	77	1	77
2-Bedroom	60	2	120
3-Bedroom	0	3	0
3-Bedroom (TH)	6	3	18
Total	143		215

Total - The Hills Luxury Commons

Unit Type	Total Units	Bedrooms per Unit Type	Total Bedrooms
Junior 1-Bedroom	107	1	107
1-Bedroom (With Den)	49	1	49
1-Bedroom (W/Ups)	8	1	8
2-Bedroom (With W/Ups)	13	2	26
3-Bedroom	4	2	8
Total	181		198

The Hills vs. Original Approved
Total Bedrooms

-17

The Hills vs. Original
Total Bedroom % Change

-7.91%

NEIGHBORHOOD EFFORTS

THE HILLS LUXURY COMMONS

HISTORIC BREWERS HILL ASSOCIATION & GENERAL COMMUNITY MEETING INFORMATION

Meeting Date	With Whom	Reason
Thursday, January 28, 2016	HBHA Board Members	Overview of Development Plans
Thursday, February 25, 2016	HBHA Board Members	Review of updated plans prior to Community Meeting
Tuesday, March 01, 2016	HBHA & General Community	Present development plans and obtain community feedback
Tuesday, March 29, 2016	HBHA & General Community	Present updated development plans and obtain community feedback
Friday, May 13, 2016	HBHA Board Members	Present updated development design/plans prior to Community meeting
Friday, May 20, 2016	HBHA & General Community	Present updated development plans and obtain community feedback

NEIGHBORHOOD EFFORTS

COMMUNITY INPUT & INCORPORATION

Community Suggestion, Concern, (and/or) Feedback

Development Team Response

Block A: Potential hazard with parking entrance on Palmer St.

Moved parking entrance from Palmer to Reservoir

Block A: Reduce building height south of Cobblers Townhomes

Reduced building height on western elevation by one story

Block A & Block B: Provide street level activation where possible

Added primary entry or walk-up units to both sites

Block B: Add architectural detail to the façade for at-grade parking

Added Glazed windows and complementary landscaping

Block A & Block B: Design buildings with better distribution of materials

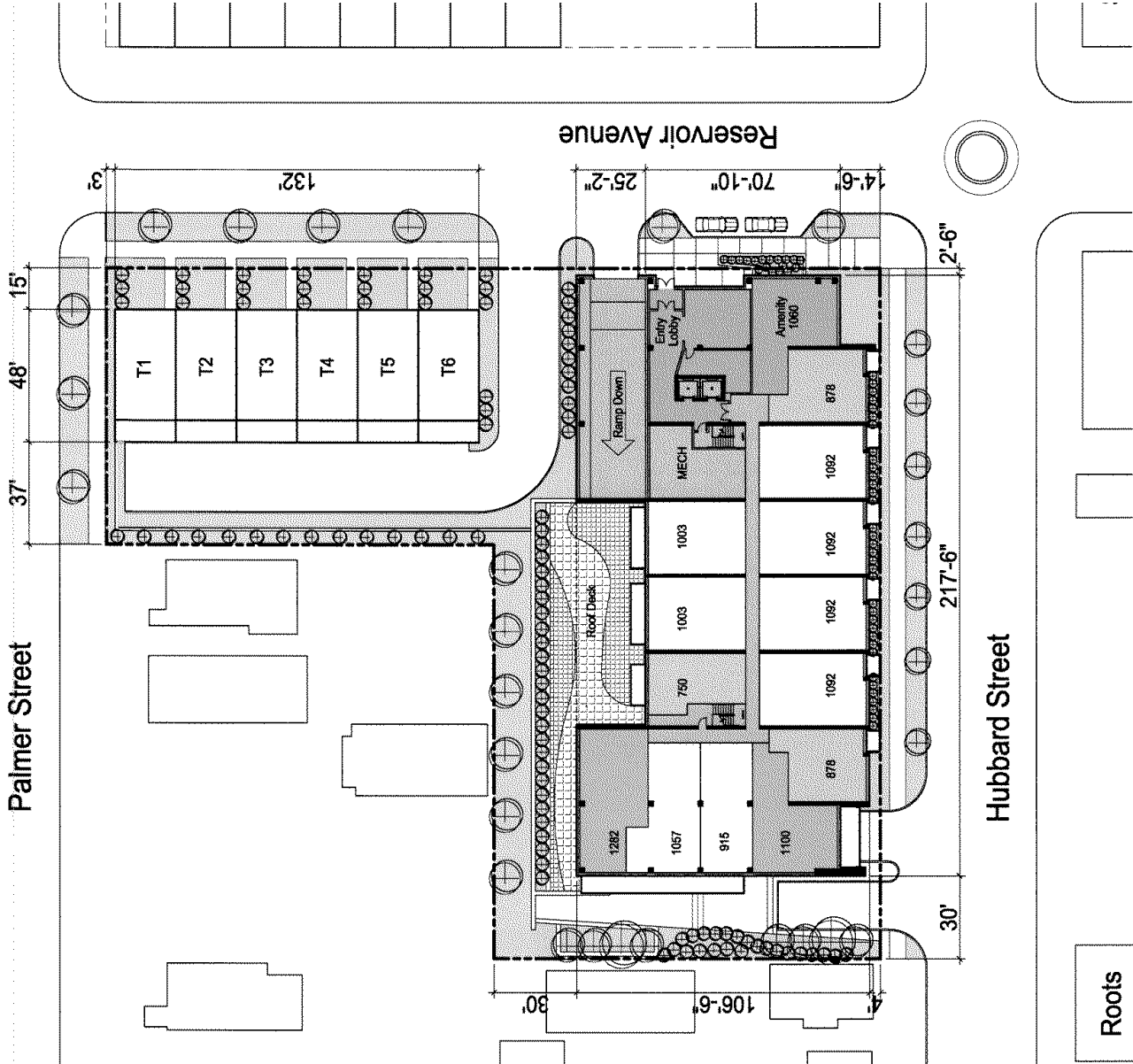
Created a totally new design that's befitting for Brewers Hill

CURRENT APPROVED



DETAILED PLAN DEVELOPMENT Submittal

CURRENT APPROVED



BREWER'S HILL COMMONS

LANDSCAPE PLAN



CALL DIGGERS HOTLINE
517-371-7888
517-371-7889
517-371-7890
517-371-7891
517-371-7892
517-371-7893
517-371-7894
517-371-7895
517-371-7896
517-371-7897
517-371-7898
517-371-7899
517-371-7900
517-371-7901
517-371-7902
517-371-7903
517-371-7904
517-371-7905
517-371-7906
517-371-7907
517-371-7908
517-371-7909
517-371-7910
517-371-7911
517-371-7912
517-371-7913
517-371-7914
517-371-7915
517-371-7916
517-371-7917
517-371-7918
517-371-7919
517-371-7920
517-371-7921
517-371-7922
517-371-7923
517-371-7924
517-371-7925
517-371-7926
517-371-7927
517-371-7928
517-371-7929
517-371-7930
517-371-7931
517-371-7932
517-371-7933
517-371-7934
517-371-7935
517-371-7936
517-371-7937
517-371-7938
517-371-7939
517-371-7940
517-371-7941
517-371-7942
517-371-7943
517-371-7944
517-371-7945
517-371-7946
517-371-7947
517-371-7948
517-371-7949
517-371-7950
517-371-7951
517-371-7952
517-371-7953
517-371-7954
517-371-7955
517-371-7956
517-371-7957
517-371-7958
517-371-7959
517-371-7960
517-371-7961
517-371-7962
517-371-7963
517-371-7964
517-371-7965
517-371-7966
517-371-7967
517-371-7968
517-371-7969
517-371-7970
517-371-7971
517-371-7972
517-371-7973
517-371-7974
517-371-7975
517-371-7976
517-371-7977
517-371-7978
517-371-7979
517-371-7980
517-371-7981
517-371-7982
517-371-7983
517-371-7984
517-371-7985
517-371-7986
517-371-7987
517-371-7988
517-371-7989
517-371-7990
517-371-7991
517-371-7992
517-371-7993
517-371-7994
517-371-7995
517-371-7996
517-371-7997
517-371-7998
517-371-7999
517-371-8000

SHADE TREES (DECIDUOUS)

- GMSM Green Mountain Sugar Maple
- HRB Heritage Riverbirch
- BC Bald Cypress

ORNAMENTAL TREES (DECIDUOUS)

- ABS Autumn Brilliance Serviceberry
- PFC Prairie Fire Flowering Crabapple
- SC Sentinel Crabapple
- JTL Ivory Silk Japanese Tree Lilac

EVERGREEN TREES

- FVJ Fairview Upright Juniper (upright)
- BHS Black Hills Spruce

EVERGREEN SHRUBS

- CGB Chicagoland Green Boxwood
- GMB Green Mountain Boxwood
- KCPJ Kallay Compact Pfizer Juniper

DECIDUOUS SHRUBS

- HC Peking (Hedge) Cotoneaster
- IH Incrediball Hydrangea
- KOSR Knock Out Shrub Rose
- AJAV Autumn Jazz Arrowwood Viburnum

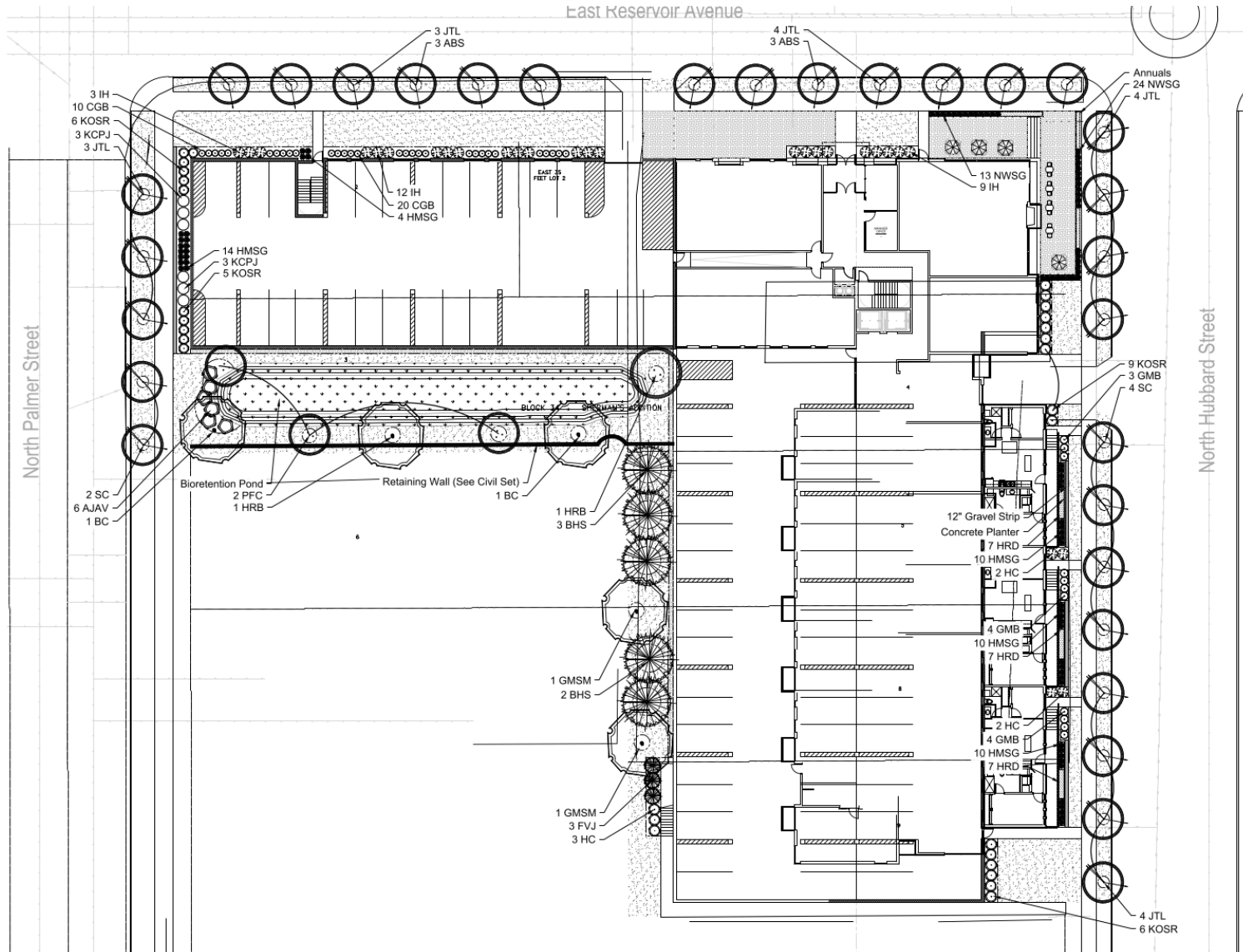
ORNAMENTAL GRASSES

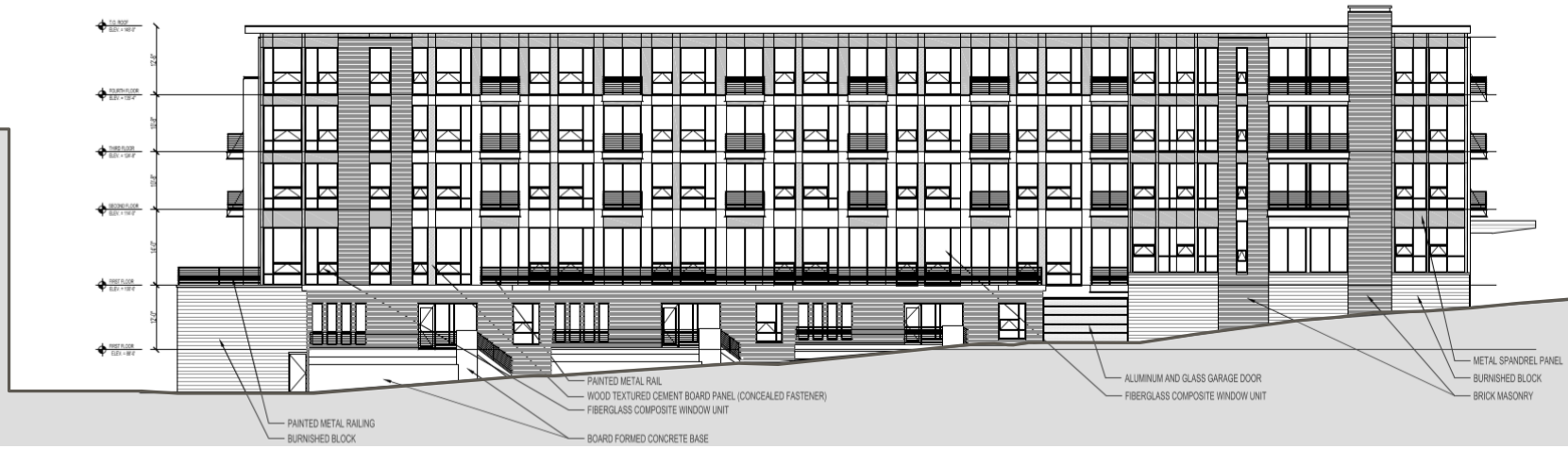
- HMSG Heavy Metal Switch Grass
- NWSG Northwind Switchgrass

HERBACEOUS PERENNIALS

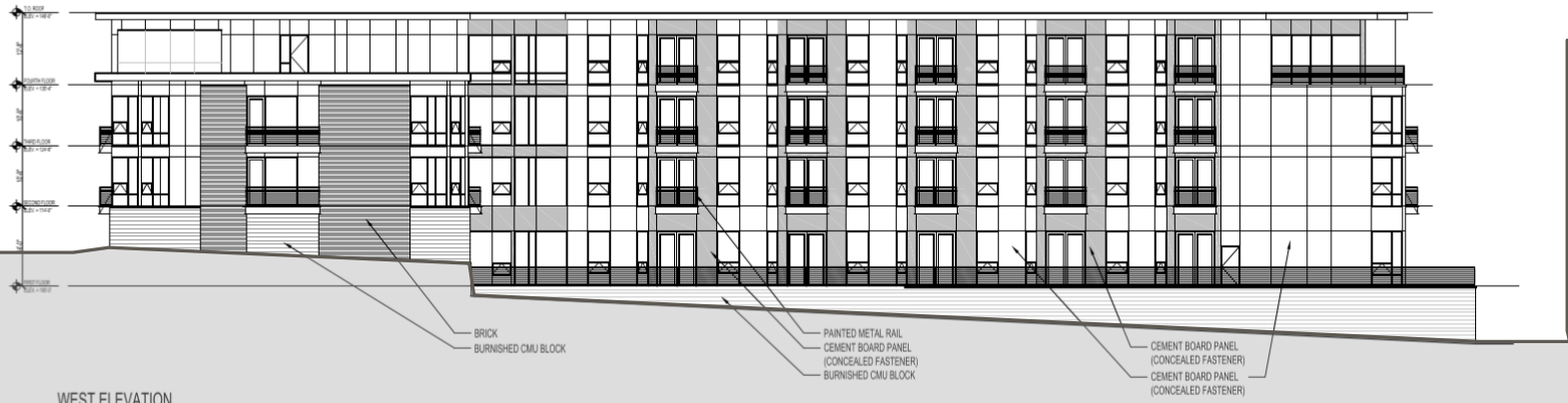
- HRD Happy Returns Daylily

PLANT ABBREVIATION KEY





EAST ELEVATION
SCALE: 1/8"=1'-0"

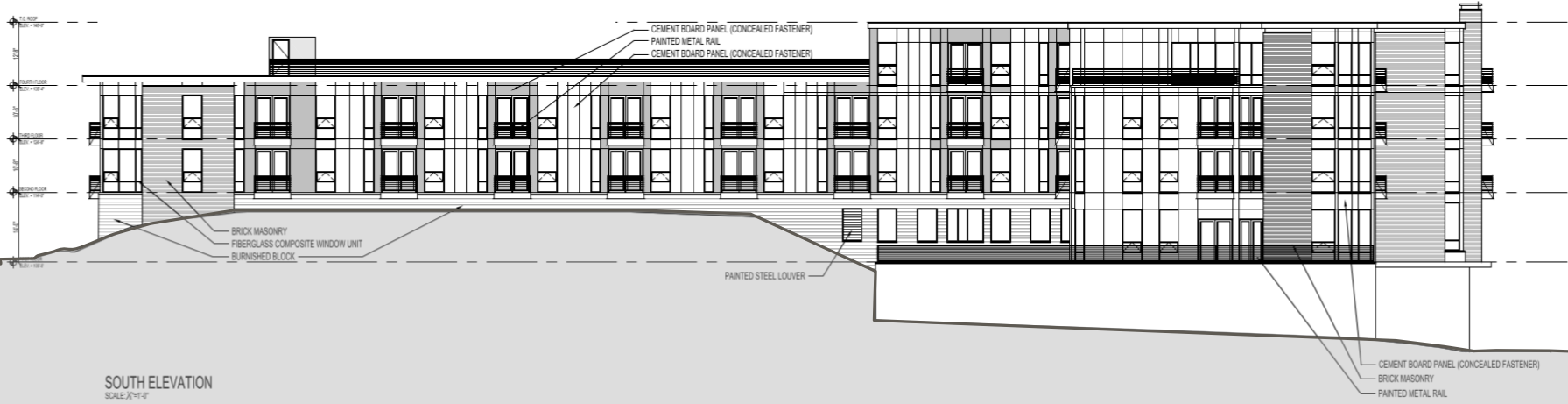


WEST ELEVATION
SCALE: 1/8"=1'-0"



NORTH ELEVATION

SCALE: 1/4"=1'-0"



SOUTH ELEVATION

SCALE: 1/4"=1'-0"

VIEW FROM HUBBARD AND RESERVOIR



VIEW NORTH ON HUBBARD



VIEW FROM PALMER AND RESERVOIR



Block B

Phase 6

VICINITY MAP



7/19/2013

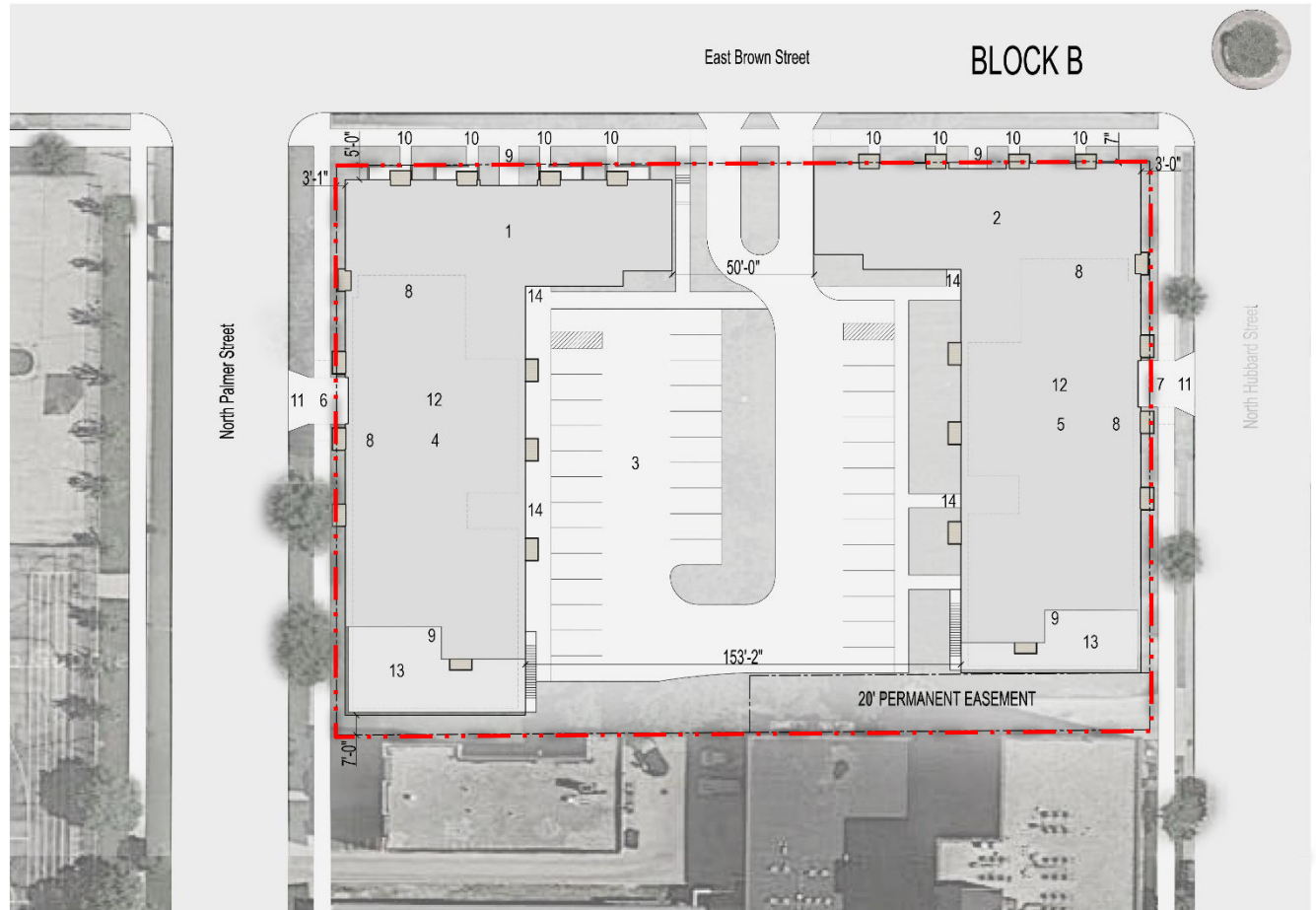
SITE PLAN

SITE PLAN KEY

1. BUILDING 1 (FOUR FLOORS)
2. BUILDING 2 (FOUR FLOORS)
3. SURFACE PARKING
4. BUILDING 1 PARKING GARAGE
5. BUILDING 2 PARKING GARAGE
6. BUILDING 1 GARAGE ENTRANCE
7. BUILDING 2 GARAGE ENTRANCE
8. INTERIOR BICYCLE PARKING
9. MAIN PEDESTRIAN ENTRANCE
10. WALK UP UNITS
11. REFUSE COLLECTION
12. LOADING FACILITY
13. COMMUNITY DECK (ONE FLOOR)
14. PEDESTRIAN ENTRY

88 PARKING SPACES

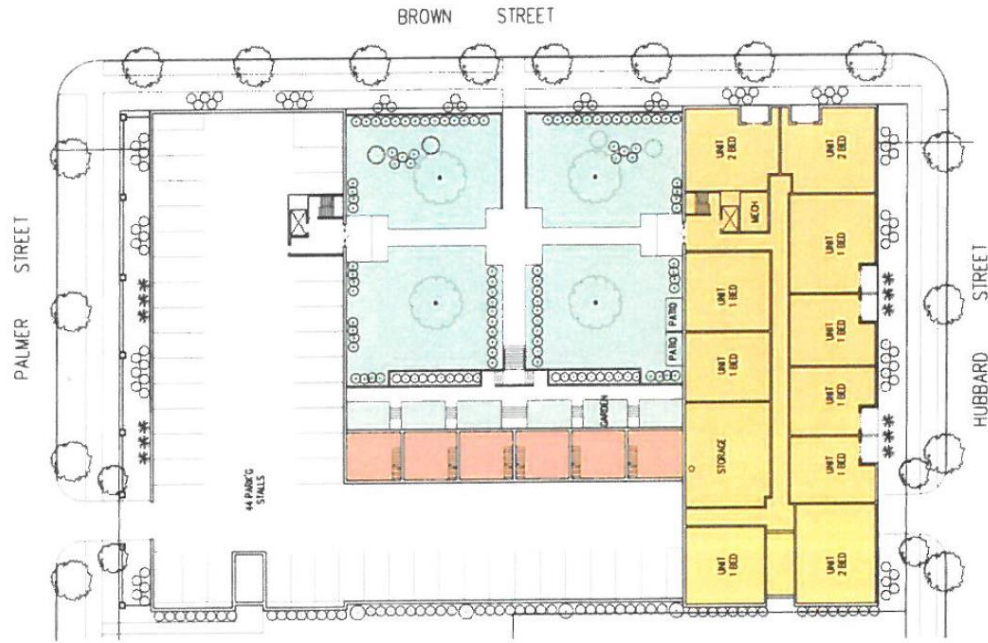
- 38 SPACES- SURFACE PARKING
- 25 SPACES- GARAGE 1
- 25 SPACES- GARAGE 2



CURRENT APPROVED



Rendering of a potential design for Block B



LANDSCAPE PLAN



10 GENERAL LOCATIONS OF PARTICIPANTS UNDERGROUND FACILITY INFORMATION
 CALL DIGGERS HOTLINE 811 OR 1-800-368-5848
 24 HOURS A DAY
 BEFORE ANY EXCAVATION OR GROUNDWORK

SHADE TREES (DECIDUOUS)

- ABM Autumn Blaze Maple
- SHL Skyline Honeylocust
- KCT Kentucky Coffee Tree
- SWO Swamp White Oak

ORNAMENTAL TREES (DECIDUOUS)

- ABS Autumn Brilliance Serviceberry
- RJFC Red Jewel Flowering Crabapple
- JTL Ivory Silk Japanese Tree Lilac

EVERGREEN TREES

- FVJ Fairview Upright Juniper (upright)

EVERGREEN SHRUBS

- CGB Chicagoland Green Boxwood
- GMB Green Mountain Boxwood

DECIDUOUS SHRUBS

- HC Peking (Hedge) Cotoneaster
- DF Dwarf Fothergilla
- AH Annabelle Hydrangea
- IH Incrediball Hydrangea
- GLS Gro Low Fragrant Sumac
- NFS Neon Flash Spirea
- MV Mohican Viburnum

ORNAMENTAL GRASSES

- KFRG Karl Foerster Feather Reed Grass
- IDS Ice Dance Sedge
- HMSG Heavy Metal Switch Grass
- NWSG Northwind Switchgrass
- PDS Prairie Dropseed

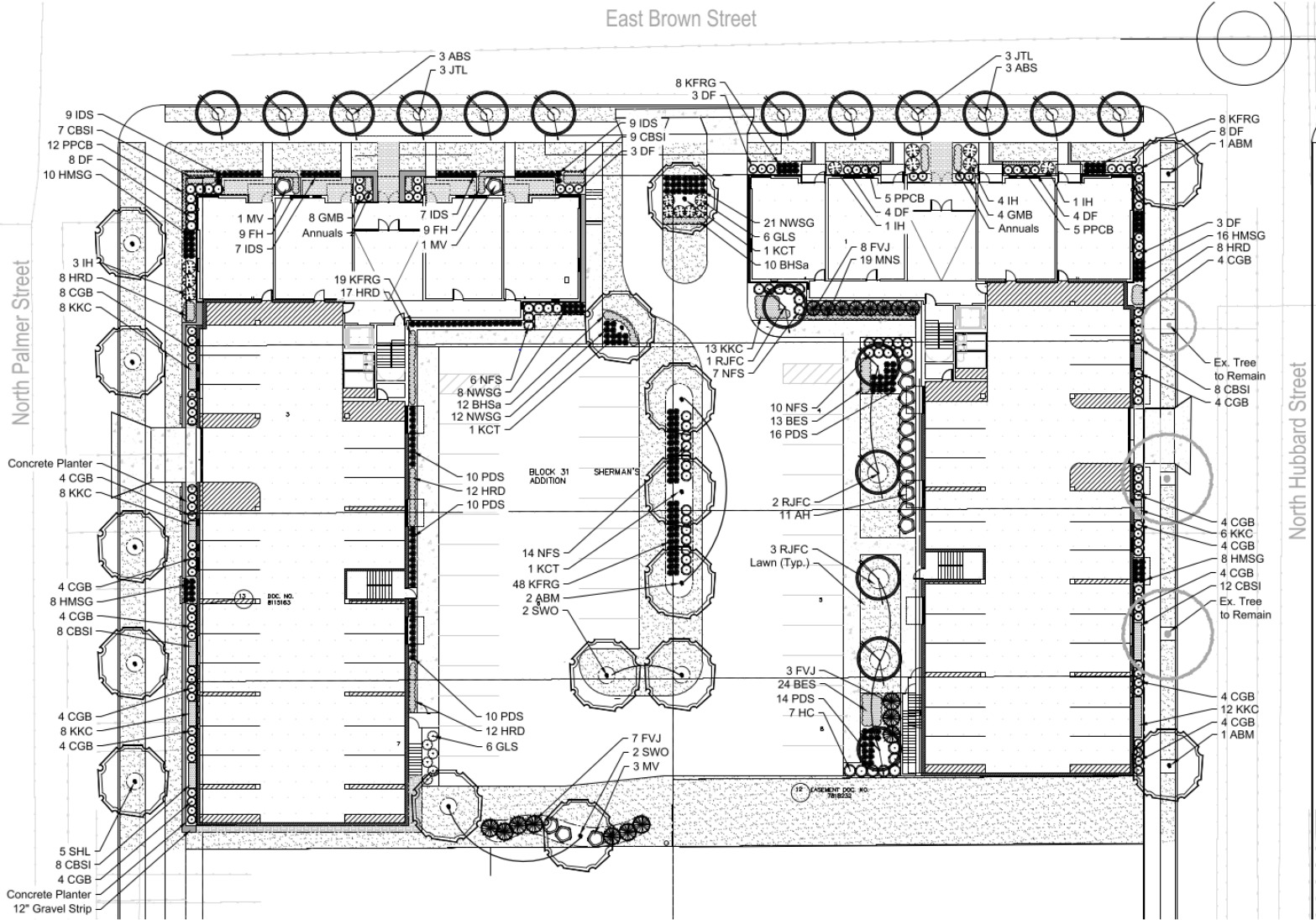
HERBACEOUS PERENNIALS

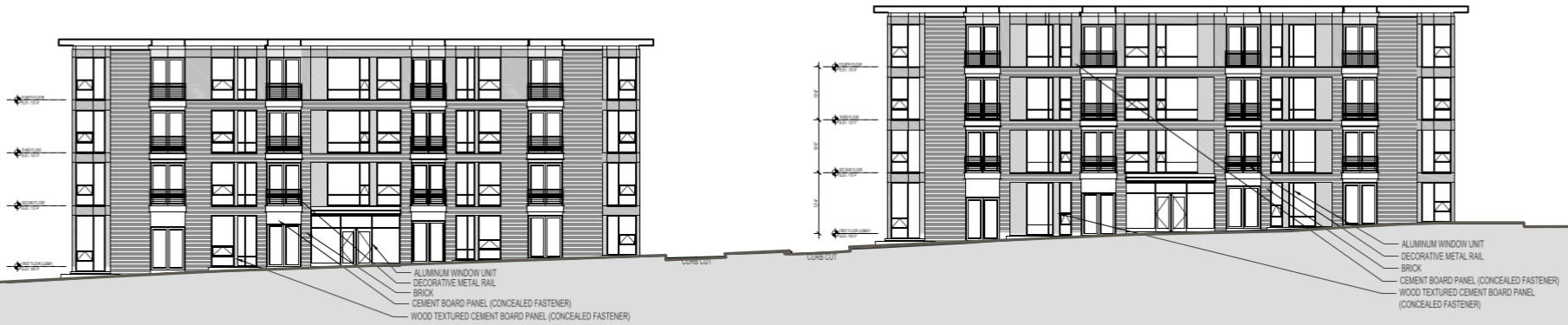
- HRD Happy Returns Daylily
- PPCB Palace Purple Coralbells
- FH Francee Hosta
- CBSI Caesars' Brother Siberian Iris
- KKC Dwarf Catmint
- BES Black-eyed Susan
- BHSA Blue Hill Salvia
- MNS May Night Salvia

GROUNDCOVERS & VINES

ANNUAL Approx. 50 SF

PLANT ABBREVIATION KEY

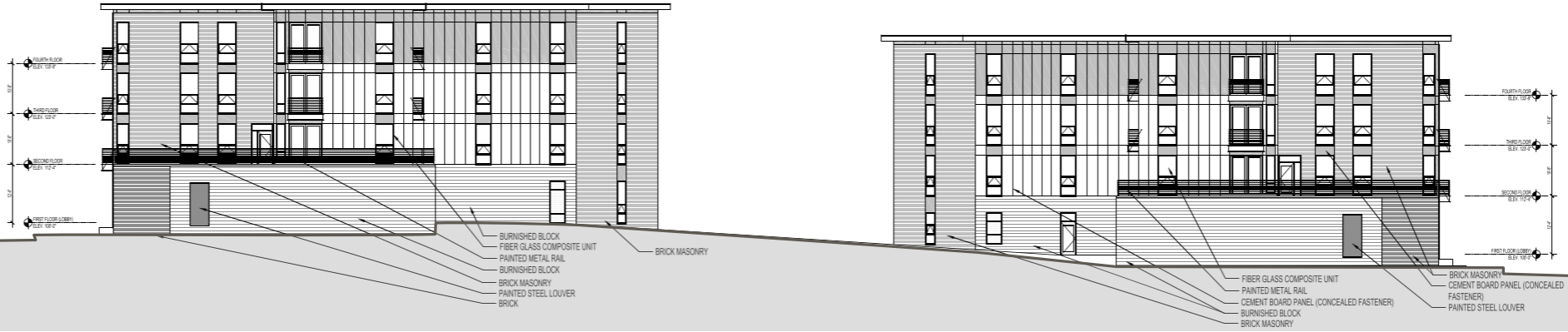




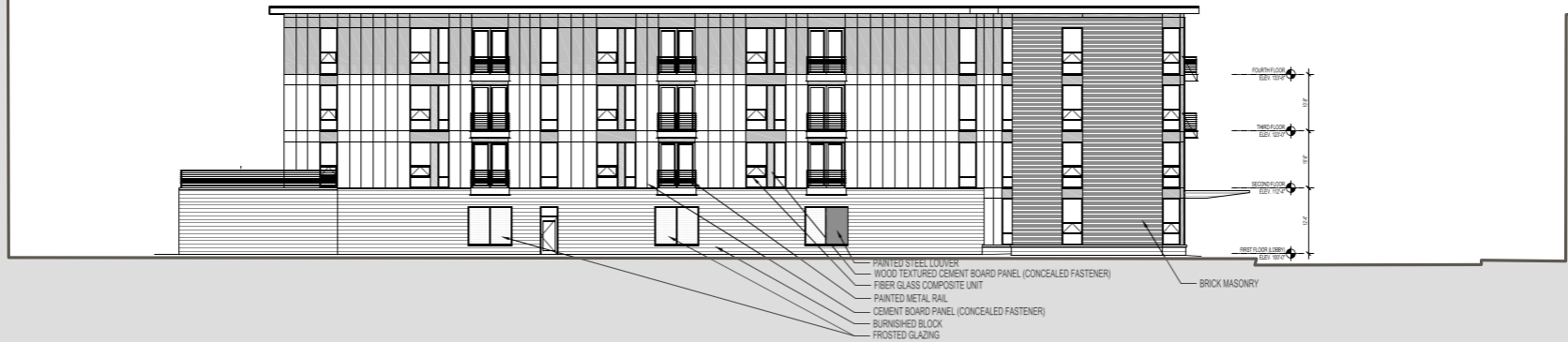
BUILDING 1 AND 2 NORTH ELEVATION
SCALE: 1/4"=1'-0"



BUILDING 1 WEST ELEVATION
SCALE: 1/8"=1'-0"



BUILDING 1 AND 2 SOUTH ELEVATION
SCALE: 1/2"=1'-0"



BUILDING 1 EAST COURTYARD ELEVATION
SCALE: 1/2"=1'-0"

VIEW FROM HUBBARD AND BROWN STREETS



VIEW FROM HUBBARD AND RESERVOIR

