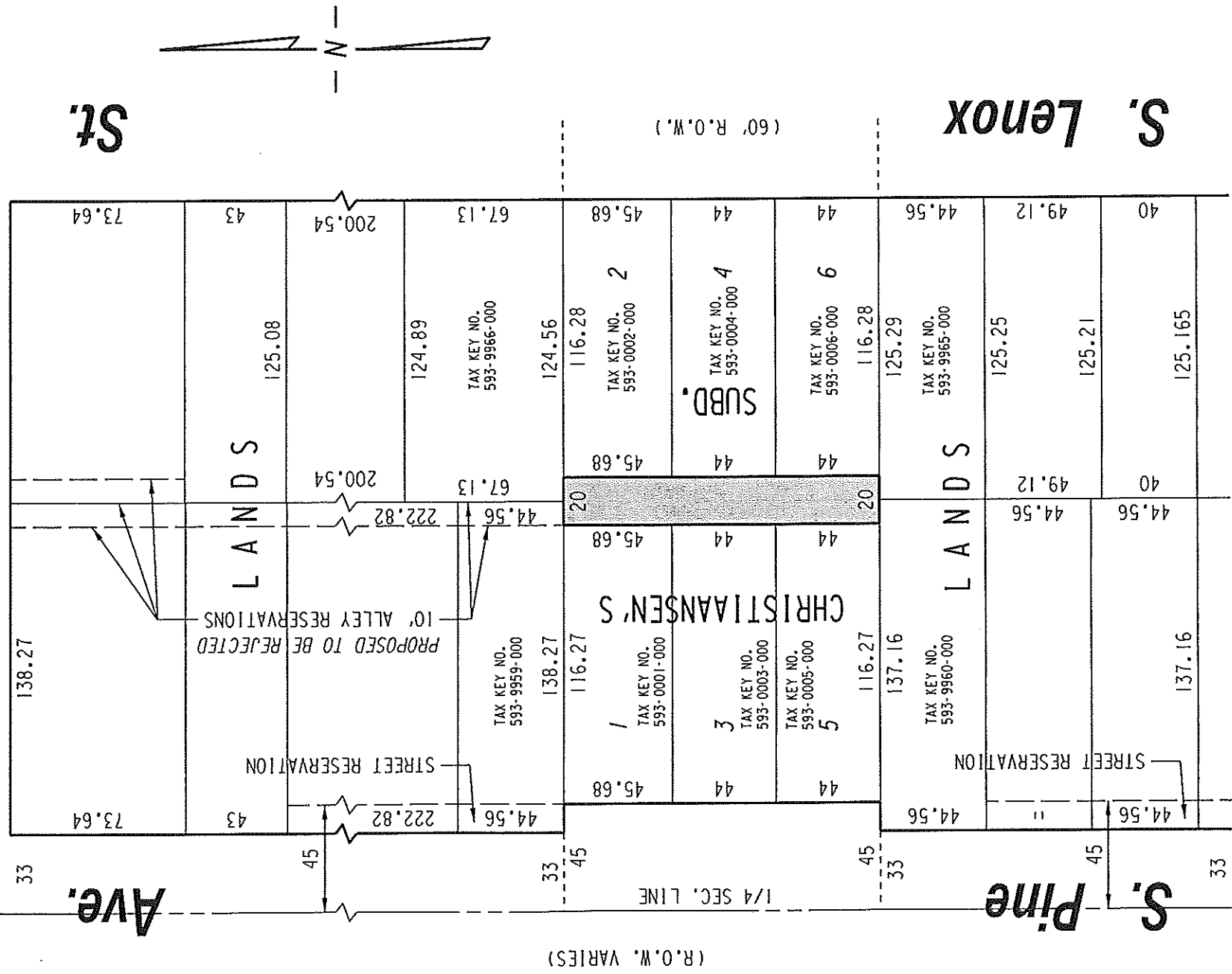


593

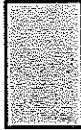
S.E. 1/4 SEC. 21, T.6N., R.22E.

(30' R.O.W.)

**E. Bottsford Ave.**



*(E. Van Norman Ave. ext.)*



UNIMPROVED PUBLIC ALLEY  
PROPOSED TO BE VACATED

EXHIBIT "A"  
FILE NO. 111395  
INFRASTRUCTURE SERVICES DIVISION  
MILWAUKEE, WISCONSIN

ASSIGNED TO: W.E. FUCHS  
DRAWN BY: W.E.F.  
PROJECT/GRANT NO.: WK52337312  
APPROVED BY:

CH'K'D. BY: W.E. FUCHS  
DATE: MARCH 9, 2012  
SCALE: 1" = 60'

13TH ALDERMANIC DISTRICT  
ALD. TERRY L. WITKOWSKI

*Marcia Cornell*  
CENTRAL DRAFTING & RECORDS MANAGER

*[Signature]*  
ENGINEER