

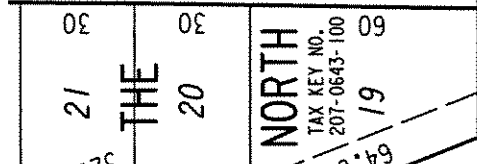
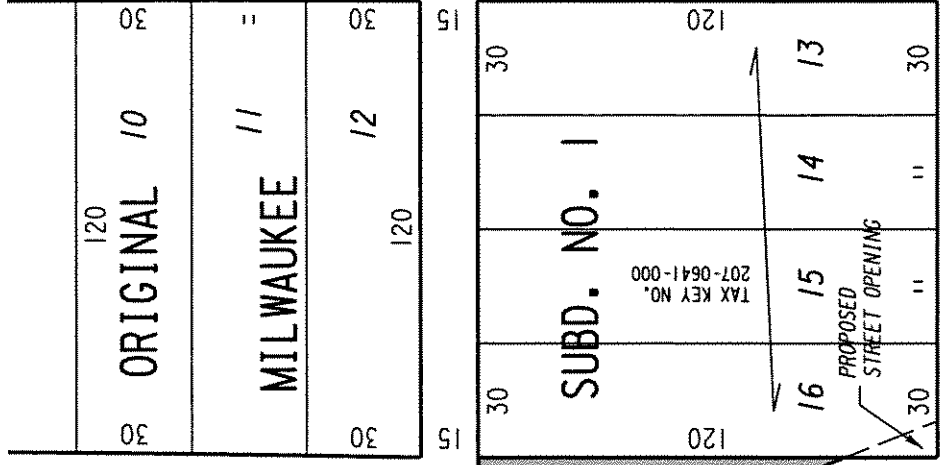
207

S.E. 1/4 SEC. 36, T.8N., R.21E.

St.

(60' R.O.W.)

N. 28th

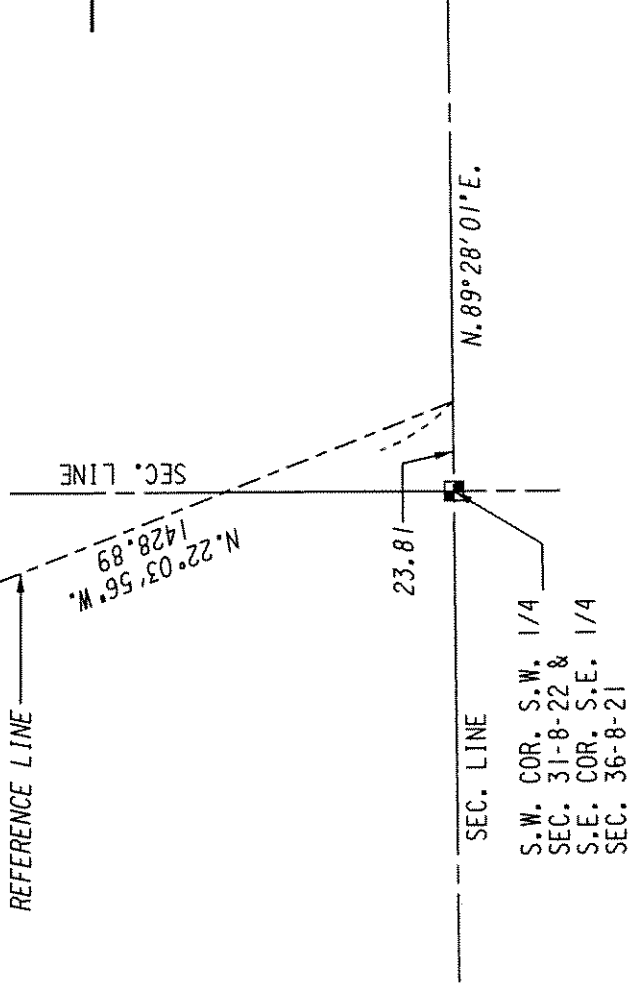
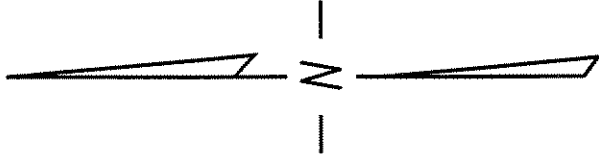


W. Teutonia

(60' R.O.W.)

Ave.

W. Fairmount



S.W. COR. S.W. 1/4
 SEC. 31-8-22 &
 S.E. COR. S.E. 1/4
 SEC. 36-8-21

PORTION OF PUBLIC
 STREET PROPOSED
 TO BE VACATED

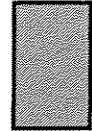


EXHIBIT "A"

FILE NO. 050576

INFRASTRUCTURE SERVICES DIVISION

MILWAUKEE, WISCONSIN

ASSIGNED TO: P.A. VELLA

CH'K'D. BY: W.E. FUCHS

DRAWN BY: P.A.V.

DATE: NOV. 14, 2005

PROJECT/GRANT NO.: WK52337218

SCALE: 1" = 50'

APPROVED BY:

maria Lindholm
 CENTRAL DRAFTING & RECORDS MANAGER

W. E. Fuchs
 CIVIL ENGINEER