

CONVENTIONAL SYMBOLS			
SECTION LINE		PARCEL NUMBER	UTILITY NUMBER
QUARTER LINE		SECTION CORNER	R/W MONUMENT
SIXTEENTH LINE		NOTATION FOR COMBUSTIBLE FLUIDS	NON-MONUMENTED R/W POINT
NEW REFERENCE LINE		NOTATION FOR HIGH VOLTAGE TRANSMISSION LINES	FOUND IRON PIN
NEW R/W LINE		CAUTION	VALVE (GAS, WATER, ETC.)
EXISTING R/W LINE			SIGN
PROPERTY LINE			OFF-PREMISE SIGN
LOT, TIE, AND OTHER MINOR LINES			
SLOPE INTERCEPT			
CORPORATE LIMITS			
UNDERGROUND FACILITY (COMMUNICATIONS, ELECTRIC, ETC.)			
FEE ACQUISITION AREA (HATCHING VARIES BY OWNER)			
TEMP. LIMITED EASEMENT AREA		ACCESS CONTROLLED BY ACQUISITION	
EASEMENT AREA (HIGHWAY, PERMANENT LIMITED, OR RESTRICTED DEVELOPMENT)		NO ACCESS (BY STATUTORY AUTHORITY)	
TRANSMISSION STRUCTURES		ACCESS RESTRICTED (BY PREVIOUS PROJECT OR CONTROL)	
BUILDING		NO ACCESS (NEW HIGHWAY)	
BUILDING (TO BE REMOVED)		NATIONAL GEODETIC SURVEY MONUMENT	
BRIDGE		SIXTEENTH CORNER MONUMENT	
		PARALLEL OFFSETS	

CONVENTIONAL UTILITY SYMBOLS			
WATER			
GAS			
TELEPHONE			
OVERHEAD TRANSMISSION LINES			
ELECTRIC			
CABLE TELEVISION			
FIBER OPTIC			
SANITARY SEWER			
STORM SEWER			
ELECTRIC TOWER			
POWER POLE		NON-COMPENSABLE	COMPENSABLE
TELEPHONE POLE			
TELEPHONE PEDESTAL			

CURVE DATA ABBREVIATIONS			
LONG CHORD	LCH		
LONG CHORD BEARING	LCB		
RADIUS	R		
DEGREE OF CURVE	D		
CENTRAL ANGLE	Δ/DELTA		
LENGTH OF CURVE	L		
TANGENT	T		
DIRECTION AHEAD	DA		
DIRECTION BACK	DB		

CONVENTIONAL ABBREVIATIONS			
ACCESS RIGHTS	AR	OUTLOT	OL
ACRES	AC	PAGE	P
AHEAD	AH	POINT OF TANGENCY	PT
ALUMINUM	ALUM	PROPERTY LINE	PL
AND OTHERS	ET AL	RECORDED AS	(100')
BACK	BK	REEL / IMAGE	R/I
BLOCK	BLK	REFERENCE LINE	R/L
CENTERLINE	C/L	PERMANENT LIMITED EASEMENT	PLE
CERTIFIED SURVEY MAP	CSM	POINT OF BEGINNING	POB
CONCRETE	CONC	POINT OF CURVATURE	PC
COUNTY	CO	POINT OF COMPOUND CURVE	PCC
COUNTY TRUNK HIGHWAY	CTH	POINT OF INTERSECTION	PI
DISTANCE	DIST	REMAINING	REM
CORNER	COR	RESTRICTIVE DEVELOPMENT EASEMENT	RDE
DOCUMENT NUMBER	DOC	RIGHT	RT
EASEMENT	EASE	RIGHT OF WAY	R/W
EXISTING	EX	SECTION	SEC
GAS VALVE	GV	SEPTIC VENT	SEPV
GRID NORTH	GN	SQUARE FEET	SF
HIGHWAY EASEMENT	HE	STATE TRUNK HIGHWAY	STH
IDENTIFICATION	ID	STATION	STA
LAND CONTRACT	LC	TELEPHONE PEDESTAL	TP
LEFT	LT	TEMPORARY LIMITED EASEMENT	TLE
MONUMENT	MON	TRANSPORTATION PROJECT PLAT	TPP
NATIONAL GEODETIC SURVEY	NGS	UNITED STATES HIGHWAY	USH
NUMBER	NO	VOLUME	V

NOTES:

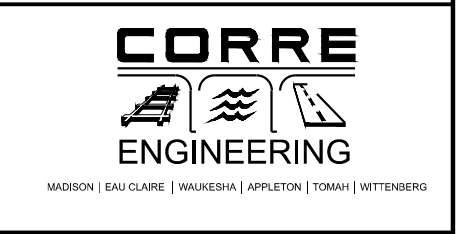
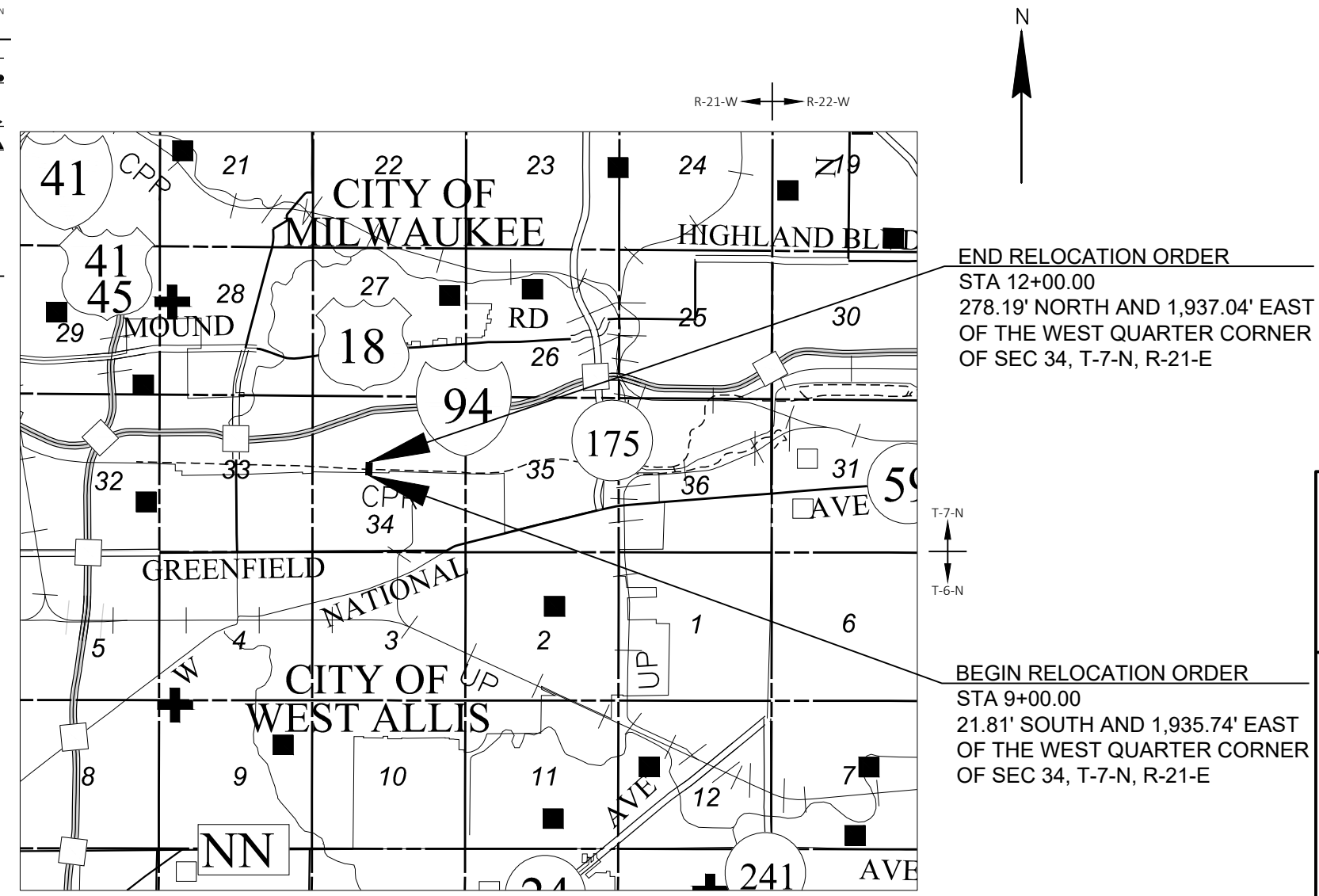
POSITIONS SHOWN ON THIS PLAT ARE WISCONSIN STATE PLANE COORDINATE SYSTEM, MILWAUKEE COUNTY, NAD27, SOUTH ZONE.

RIGHT-OF-WAY MONUMENTS ARE TYPE 2 AND ARE PLACED PRIOR TO OR AT THE TIME OF LAND TITLE TRANSFER.

RIGHT-OF-WAY BOUNDARIES ARE DEFINED WITH COURSES OF THE PERIMETER OF THE HIGHWAY LANDS REFERENCED TO THE U.S. PUBLIC LAND SURVEY SYSTEM OR OTHER "SURVEYS" OF PUBLIC RECORD.

CAUTION:
THIS PLAT IS FOR ILLUSTRATIVE PURPOSES ONLY. DEEDS MUST BE CHECKED TO DETERMINE PROPERTY BOUNDARIES.

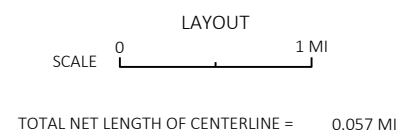
R/W PROJECT NUMBER 2656-00-02	SHEET NUMBER 4.01	TOTAL SHEETS
PLAT OF RIGHT OF WAY REQUIRED FOR SOUTH 70 TH STREET BRIDGE OVER CPRR / HAST		
LOCAL STREET	MILWAUKEE COUNTY	



I, BRYON J. MOTSZKO, PROFESSIONAL LAND SURVEYOR, S-2846, HEREBY CERTIFY THAT I HAVE SURVEYED THE LAND DESCRIBED HEREON AND THAT THE MAP HEREON IS A CORRECT REPRESENTATION OF THAT SURVEY TO THE BEST OF MY KNOWLEDGE AND BELIEF.

DATE: _____
(Signature)

REVISION DATE	CITY OF MILWAUKEE
	APPROVED FOR THE CITY
	DATE: _____ (Signature)



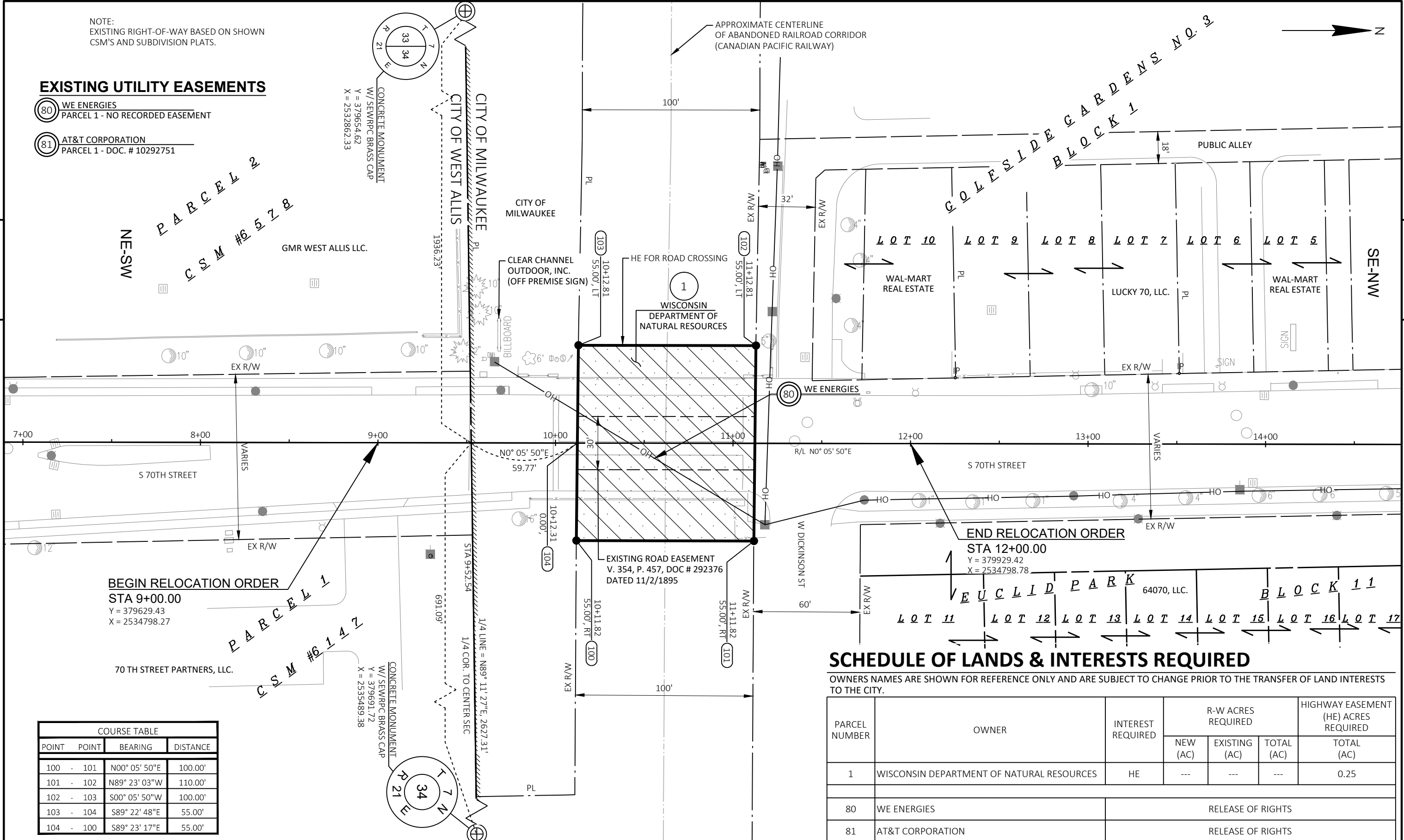
NOTE:
EXISTING RIGHT-OF-WAY BASED ON SHOWN
CSM'S AND SUBDIVISION PLATS.

EXISTING UTILITY EASEMENTS

- (80) WE ENERGIES
PARCEL 1 - NO RECORDED EASEMENT
- (81) AT&T CORPORATION
PARCEL 1 - DOC. # 10292751

4

4



BEGIN RELOCATION ORDER
STA 9+00.00
Y = 379629.43
X = 2534798.27

END RELOCATION ORDER
STA 12+00.00
Y = 379929.42
X = 2534798.78

COURSE TABLE			
POINT	POINT	BEARING	DISTANCE
100	- 101	N00° 05' 50"E	100.00'
101	- 102	N89° 23' 03"W	110.00'
102	- 103	S00° 05' 50"W	100.00'
103	- 104	S89° 22' 48"E	55.00'
104	- 100	S89° 23' 17"E	55.00'

SCHEDULE OF LANDS & INTERESTS REQUIRED

OWNERS NAMES ARE SHOWN FOR REFERENCE ONLY AND ARE SUBJECT TO CHANGE PRIOR TO THE TRANSFER OF LAND INTERESTS TO THE CITY.

PARCEL NUMBER	OWNER	INTEREST REQUIRED	R-W ACRES REQUIRED			HIGHWAY EASEMENT (HE) ACRES REQUIRED
			NEW (AC)	EXISTING (AC)	TOTAL (AC)	TOTAL (AC)
1	WISCONSIN DEPARTMENT OF NATURAL RESOURCES	HE	---	---	---	0.25
80	WE ENERGIES		RELEASE OF RIGHTS			
81	AT&T CORPORATION		RELEASE OF RIGHTS			

REVISION DATE	DATE	SCALE, FEET	HWY: LOCAL STREET	STATE R/W PROJECT NUMBER: 2656-00-02	PLAT SHEET 4.02
	GRID FACTOR N-A		COUNTY: MILWAUKEE	CONSTRUCTION PROJECT NUMBER: 2656-00-72	PS&E SHEET