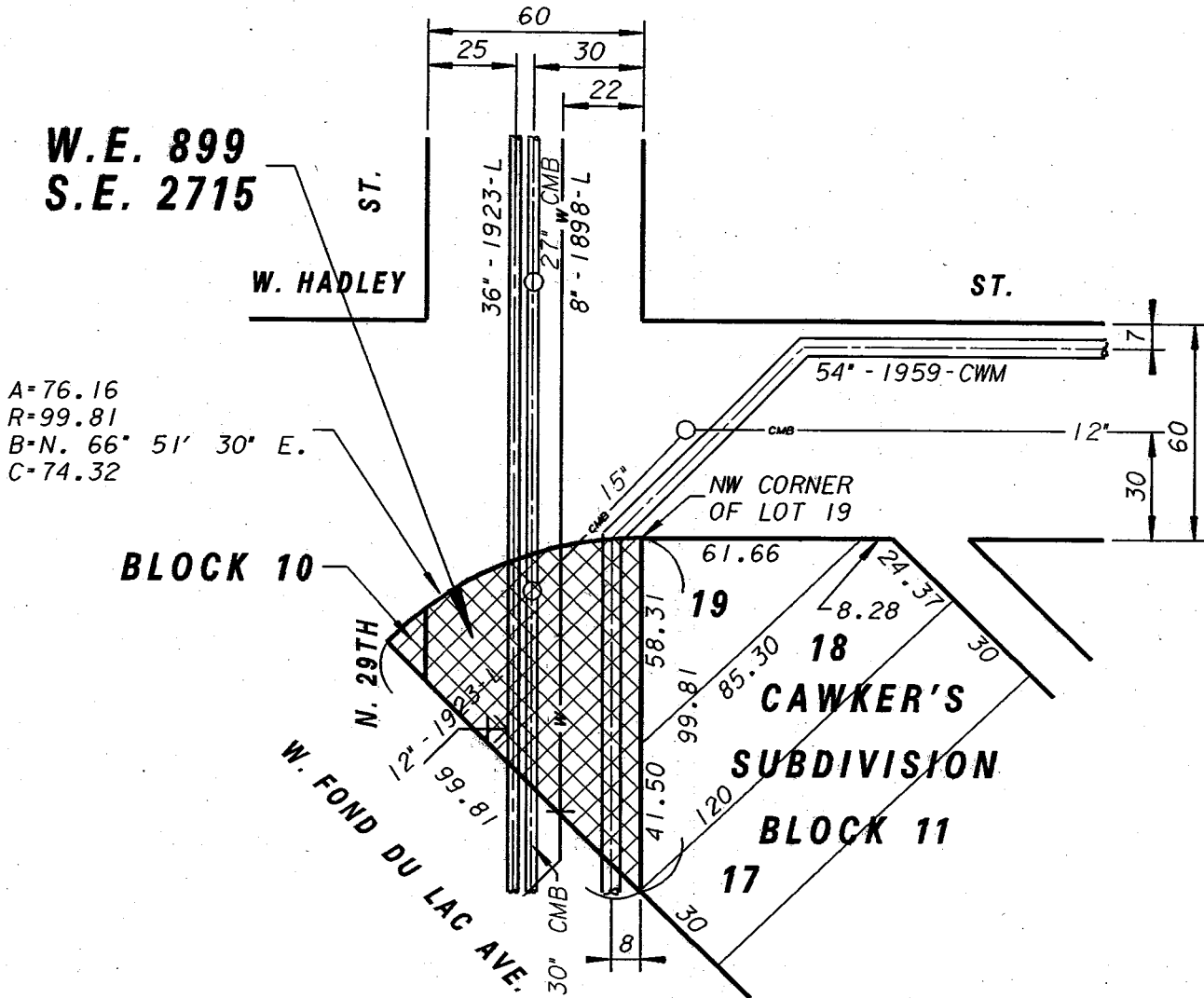


N.E. 1/4 OF SEC. 13, T.7N., R.21E.



A=76.16
 R=99.81
 B=N. 66° 51' 30" E.
 C=74.32

WATER EASEMENT W.E. 899
 SEWER EASEMENT S.E. 2715



		Water Engineering Department of Public Works Milwaukee, Wisconsin	
WATER EASEMENT			
IN AT		VACATED N. 29TH ST. W. HADLEY ST.	
SCALE	1" = 50'	APPROVED	DATE
1/4 SEC. NO.	309	<i>Michael J. Scully</i>	4.3.02
PLAN DATE	3-26-02		MAINS DESIGN ENGINEER
DRAWN BY	P.W.P.	<i>Suzanne G. Gant</i>	4-8-02
CHECKED BY	MJS		CHIEF DESIGN ENGINEER
REVIEWED BY		<i>C. Mewis</i>	4-8-02
WORK ORDER	0232		SPECIAL DEPUTY COMMISSIONER OF PUBLIC WORKS

SHEET NO. 1 OF 1 PLAN FILE NO. **WE899**