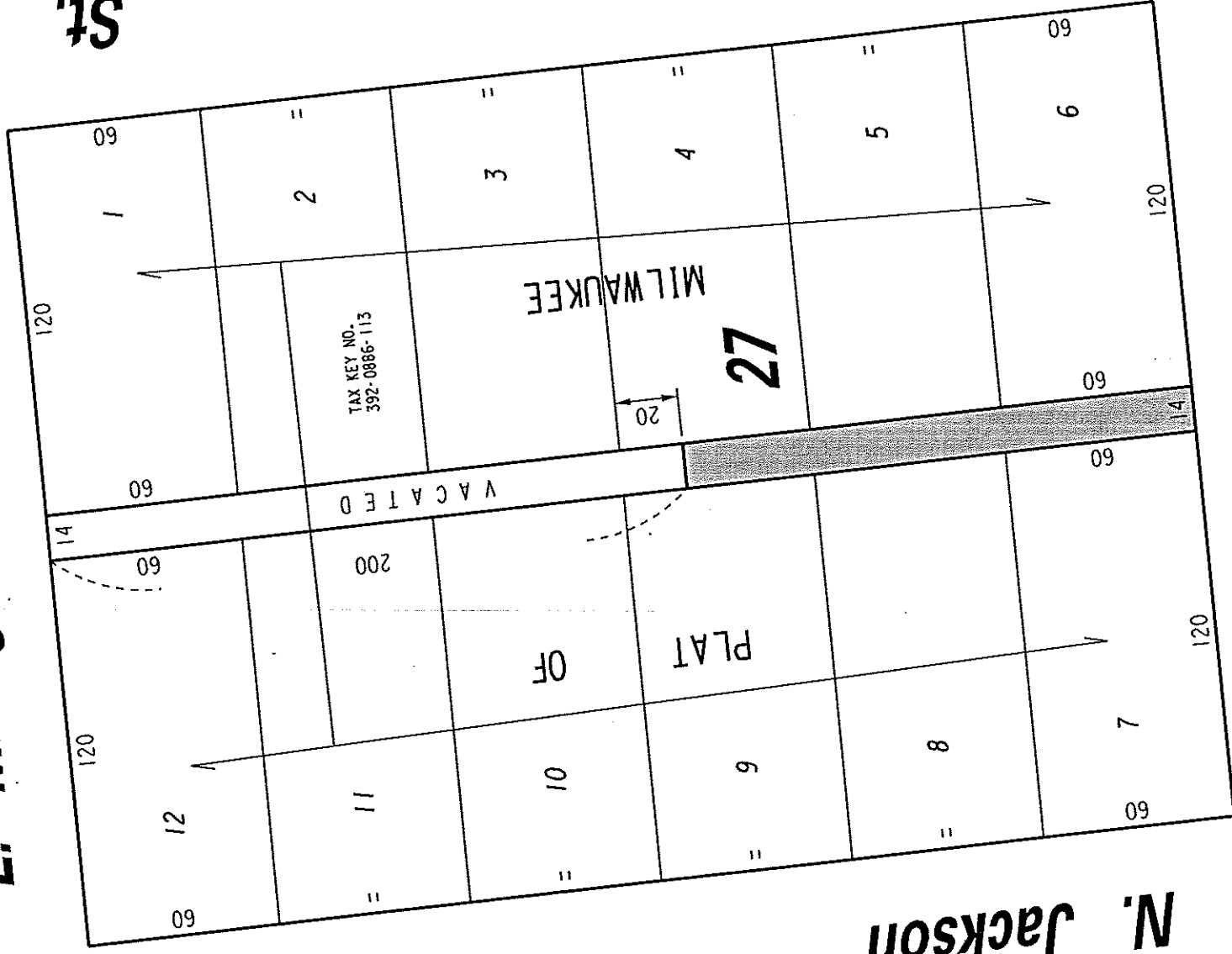
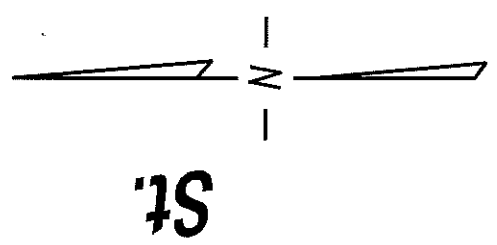


396

S.W. 1/4 SEC. 28, T.7N., R.22E.

E. Michigan St.
(80' R.O.W.)



St.

(80' R.O.W.)

N. Jackson

N. Van Buren

(80' R.O.W.)

St.

(80' R.O.W.)

E. Clybourn

PUBLIC ALLEY
PROPOSED TO
BE VACATED

EXHIBIT "A"
FILE NO. 121760

INFRASTRUCTURE SERVICES DIVISION

MILWAUKEE, WISCONSIN

ASSIGNED TO: W.E. FUCHS CH'K'D. BY: W.E. FUCHS

DRAWN BY: W.E.F. DATE: MAY 21, 2013

PROJECT/GRANT NO.: WK52337332 SCALE: 1" = 50'

APPROVED BY:

Maica Cornell
CENTRAL DRAFTING & RECORDS MANAGER

[Signature]
CIVIL ENGINEER