

EXHIBIT A
FN 041703

DETAILED PLAN DEVELOPMENT FOR MID-AMERICA DEVELOPMENT OUTLOTS MILWAUKEE, WISCONSIN

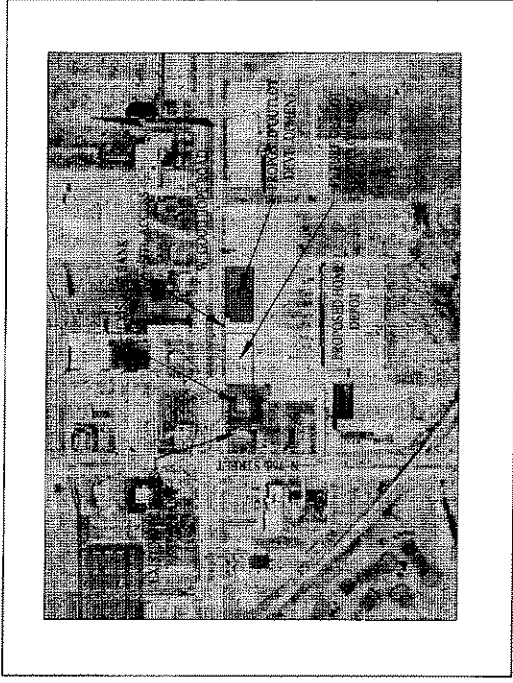
DEVELOPER/OWNER:
MID-AMERICA DEVELOPMENT
PARTNERS, LLC
2300 N. MILWAUKEE AVENUE
MILWAUKEE, WI 53212

ENGINEER:
National Survey & Engineering
225 N. MILWAUKEE AVENUE
MILWAUKEE, WI 53212
TEL: 414.224.4444
FAX: 414.224.4444
WWW.NSE-ENGINEERING.COM

ARCHITECT:
PFDA ARCHITECTS, INC.
200 N. MILWAUKEE AVENUE
MILWAUKEE, WI 53212

APPROVAL AGENCY:
City of Milwaukee, Department of City Development
809 N. Broadway, 2nd Floor
Milwaukee, WI 53202

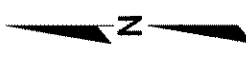
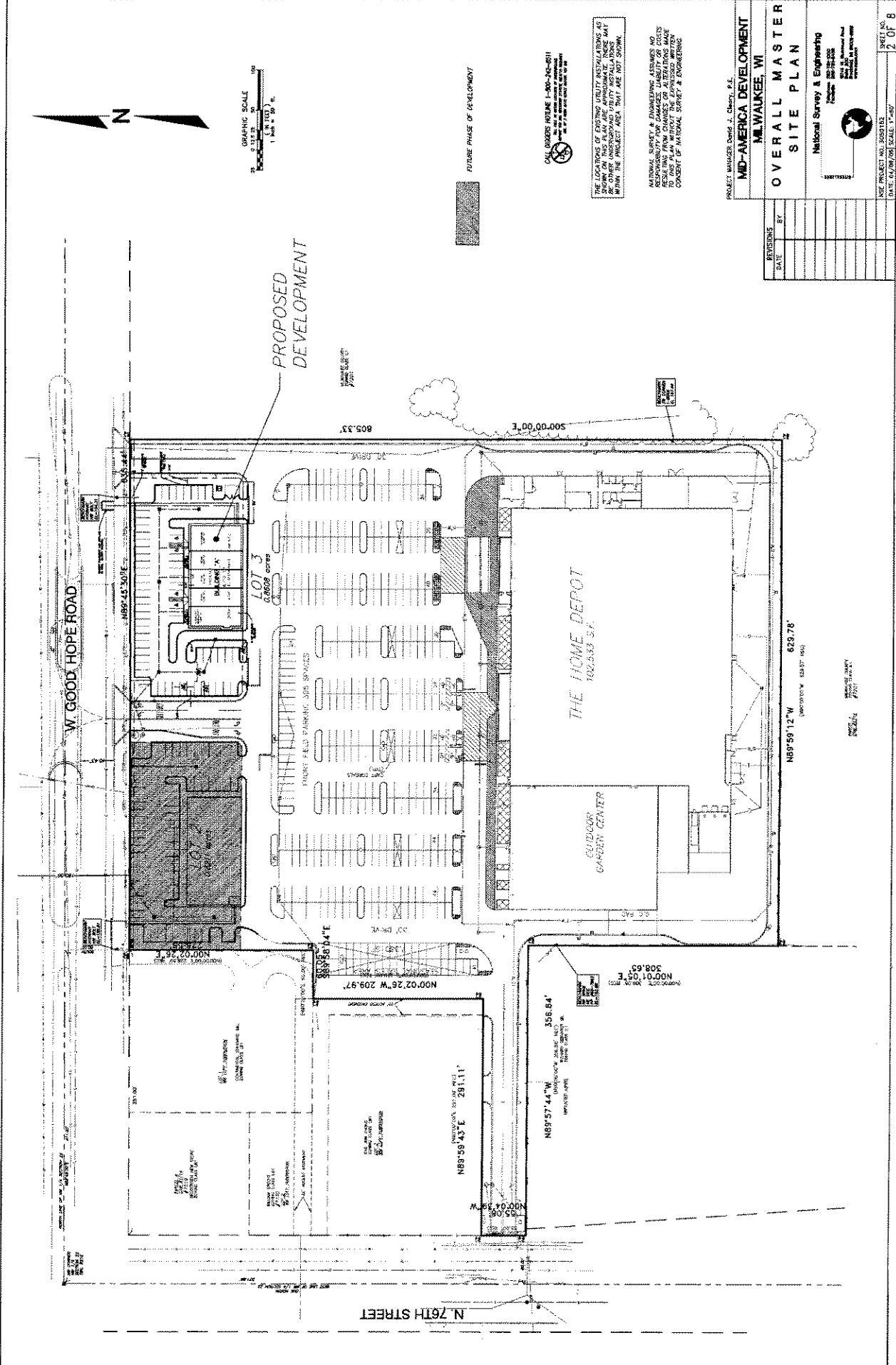
VICINITY MAP
NTS



SHEET NO.	DESCRIPTION
1 OF 8	COVER SHEET
2 OF 8	OVERALL MASTER SITE PLAN
3 OF 8	SITE PLAN
4 OF 8	GRADING AND EROSION CONTROL PLAN
5 OF 8	PAVING PLAN
6 OF 8	UTILITY PLAN
7 OF 8	LANDSCAPE PLAN
8 OF 8	SITE LIGHTING PLAN (BY OTHERS)
EL1	BUILDING ELEVATIONS (BY OTHERS)
1 OF 1	PLAT OF SURVEY

REVISION	REVISION DATE	SHEET NO. 3	ISSUED BY

PLAN DATE: April 8, 2005



DRAWING SCALE
1" = 100' PL.

FUTURE PHASE OF DEVELOPMENT

CALL ORDERS INTAKE 1-800-303-8311
SEE US AT 6000 WEST 9TH AVENUE, SUITE 100
DENVER, CO 80202

THE PLANNING OF THIS PROJECT INVOLVES THE USE OF A SURVEYING SYSTEM ON THIS PLAN AND APPROXIMATE LINES OF SURVEY. OTHER UNDETERMINED UTILITY INSTALLATIONS WITHIN THE PROJECT AREA MAY NOT BE SHOWN.

NATIONAL SURVEY & ENGINEERING ASSUMES NO RESPONSIBILITY FOR DAMAGES, LIABILITY OR COSTS TO OTHERS ARISING FROM THIS PLAN WITHOUT THE EXPRESS WRITTEN CONSENT OF NATIONAL SURVEY & ENGINEERING.

PROJECT MANAGER: David J. Chert, P.E.

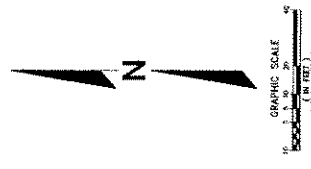
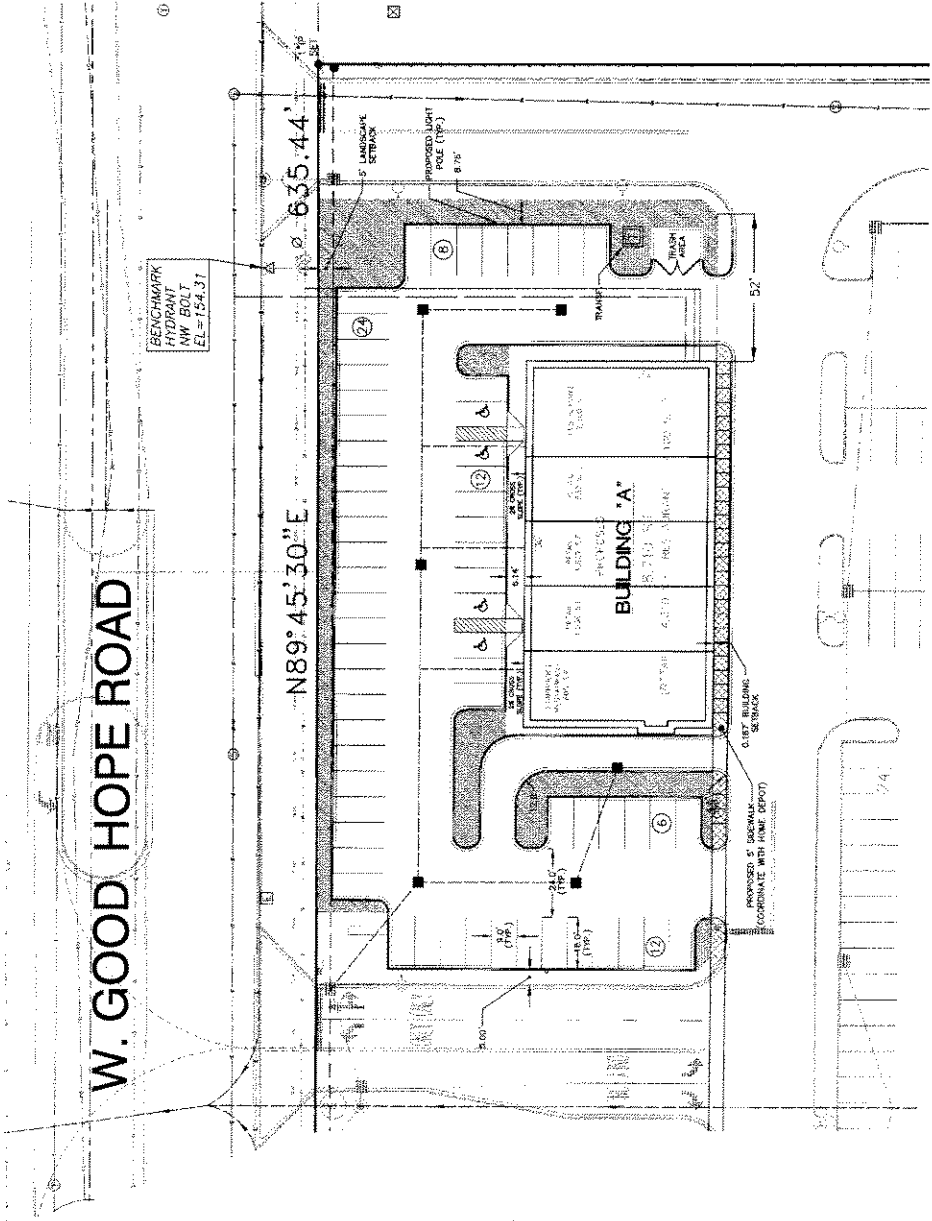
MD-AMERICA DEVELOPMENT
MILWAUKEE, WI

OVERALL MASTER SITE PLAN

National Survey & Engineering
1000 W. Wisconsin Ave.
Milwaukee, WI 53228-2000
Phone: 414.224.4000
Fax: 414.224.4000

USE PROJECT NO. 020715
DATE: 10/04/04 SCALE: 1" = 100'

W. GOOD HOPE ROAD



LEGEND:

- 24 PARKING LOT
- LANDSCAPE AREA
- PROPOSED 3' SIDEWALK

SURFACE PAVING:

FINISH	THICKNESS	FINISH	THICKNESS	FINISH	THICKNESS
1	8.00	2	8.00	3	8.00
4	8.00	5	8.00	6	8.00

NOTES:

- THE ABOVE LAND AREA AND DISTANCE ARE BASED ON THE SURVEY DATA PROVIDED TO THE ENGINEER BY THE CLIENT.
- THE ABOVE LAND AREA AND DISTANCE ARE BASED ON THE SURVEY DATA PROVIDED TO THE ENGINEER BY THE CLIENT.

THE LOCATIONS OF EXISTING UTILITY INSTALLATIONS AS SHOWN ON THIS PLAN ARE APPROXIMATE. THERE MAY BE OTHER UTILITIES LOCATED WITHIN THE PROJECT AREA THAT ARE NOT SHOWN.

NATIONAL SURVEY & ENGINEERING ASSUMES NO RESPONSIBILITY FOR DAMAGES, LIABILITY OR COSTS INCURRED BY ANY PARTY AS A RESULT OF THE FAILURE TO TAKE PLAN WITHOUT THE EXPRESSED WRITTEN CONSENT OF NATIONAL SURVEY & ENGINEERING.

PROJECT MANAGER: David J. Greer, P.E.

MID-AMERICA DEVELOPMENT
MILWAUKEE, WI

SITE PLAN

National Survey & Engineering
1000 W. Wisconsin Ave.
Milwaukee, WI 53233
Phone: 414-224-2424
Fax: 414-224-2425
www.nse.com

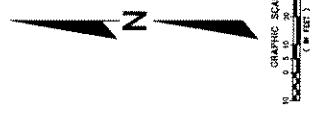
USE PROJECT NO. 20030132

DATE: 04/08/05 SCALE: 1"=20'

SHEET NO. 3 OF 8

REVISIONS	BY	DATE
1	JKM	04/29/05
2	JKM	05/02/05

CALL BUSINESS WIRELESS 1-800-294-2671
FOR THE LATEST SOFTWARE AND HARDWARE
FOR YOUR BUSINESS. WE'LL HELP YOU GET THE MOST
OUT OF YOUR BUSINESS PHONE.



- ONE FOOT OUTLINE
- SPOT SHOT (BACK OF CURB)
- SPOT SHOT (FRONT OF CURB)
- SILT FENCE
- INLET GRATE SCREEN
- STONE TRAPPING MAT

CALL NUMBER: 1-800-360-8671
 THE USE OF THIS PLAN IS LIMITED TO THE PROJECT AND SITE SPECIFICALLY IDENTIFIED HEREIN. IT IS NOT TO BE USED FOR ANY OTHER PROJECT OR SITE WITHOUT THE WRITTEN CONSENT OF THE ENGINEER.

ALL ELEVATIONS SHOWN ARE ASSUMED TO BE FINISHED GRADE.

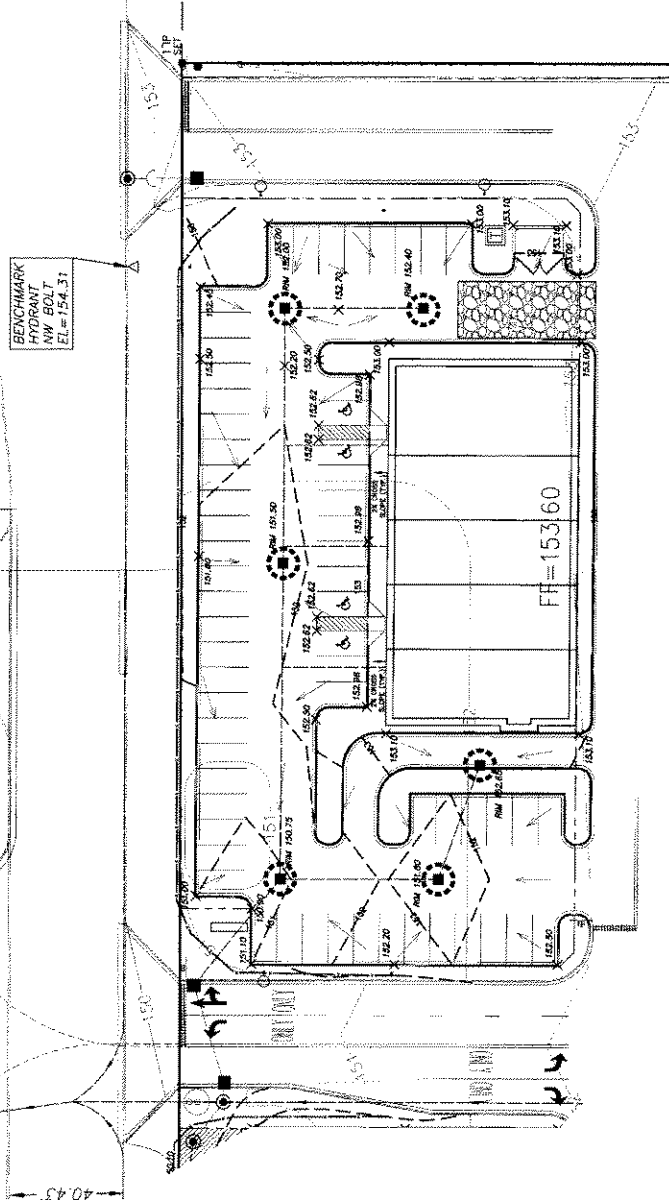
THE CONTRACTOR SHALL ASSUME SOLE RESPONSIBILITY FOR OBTAINING ALL NECESSARY PERMITS AND FOR THE ACTUAL LAND BALANCE, INCLUDING UTILITY LOCATIONS, PRIOR TO CONSTRUCTION. MATERIALS NECESSARY TO COMPLETE THE PROJECT SHALL BE OBTAINED FROM THE CONTRACTOR'S SOURCE.

NATIONAL SURVEY & ENGINEERING ASSOCIATES, INC.
 NATIONAL SURVEY & ENGINEERING ASSOCIATES, INC.
 NATIONAL SURVEY & ENGINEERING ASSOCIATES, INC.
 NATIONAL SURVEY & ENGINEERING ASSOCIATES, INC.

MID-AMERICA DEVELOPMENT
 MILWAUKEE, WI
 GRADING & EROSION
 CONTROL PLAN

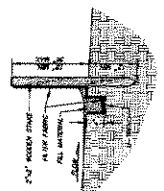
National Survey & Engineering
 1000 W. Wisconsin Ave.
 Milwaukee, WI 53233
 Phone: 414.333.3333
 Fax: 414.333.3333
 Website: www.nse.com

PROJECT MANAGER: David J. Smith, P.E.
 DATE: 08/20/2013
 SHEET NO. 4 OF 8



CONSTRUCTION SEQUENCE:

- INSTALL ALL FINAL EROSION CONTROL PLAN ELEMENTS.
- STABILIZE EXPOSED AREAS WITH TOPSOIL, SEED, MULCH, AND BIRCH.
- STABILIZE EXPOSED AREAS WITH TOPSOIL, SEED, MULCH, AND BIRCH.
- STABILIZE EXPOSED AREAS WITH TOPSOIL, SEED, MULCH, AND BIRCH.



SILT FENCE DETAIL:

- INSTALL 2x4 POSTS AT 10' ON CENTER.
- INSTALL FABRIC PANELS TO 10' HEIGHT.
- INSTALL FABRIC PANELS TO 10' HEIGHT.
- INSTALL FABRIC PANELS TO 10' HEIGHT.

STONE TRAPPING MAT DETAIL:

- INSTALL MAT WITH 12" OVERLAP.
- INSTALL MAT WITH 12" OVERLAP.
- INSTALL MAT WITH 12" OVERLAP.
- INSTALL MAT WITH 12" OVERLAP.

SILT FENCE DETAIL:

- INSTALL 2x4 POSTS AT 10' ON CENTER.
- INSTALL FABRIC PANELS TO 10' HEIGHT.
- INSTALL FABRIC PANELS TO 10' HEIGHT.
- INSTALL FABRIC PANELS TO 10' HEIGHT.

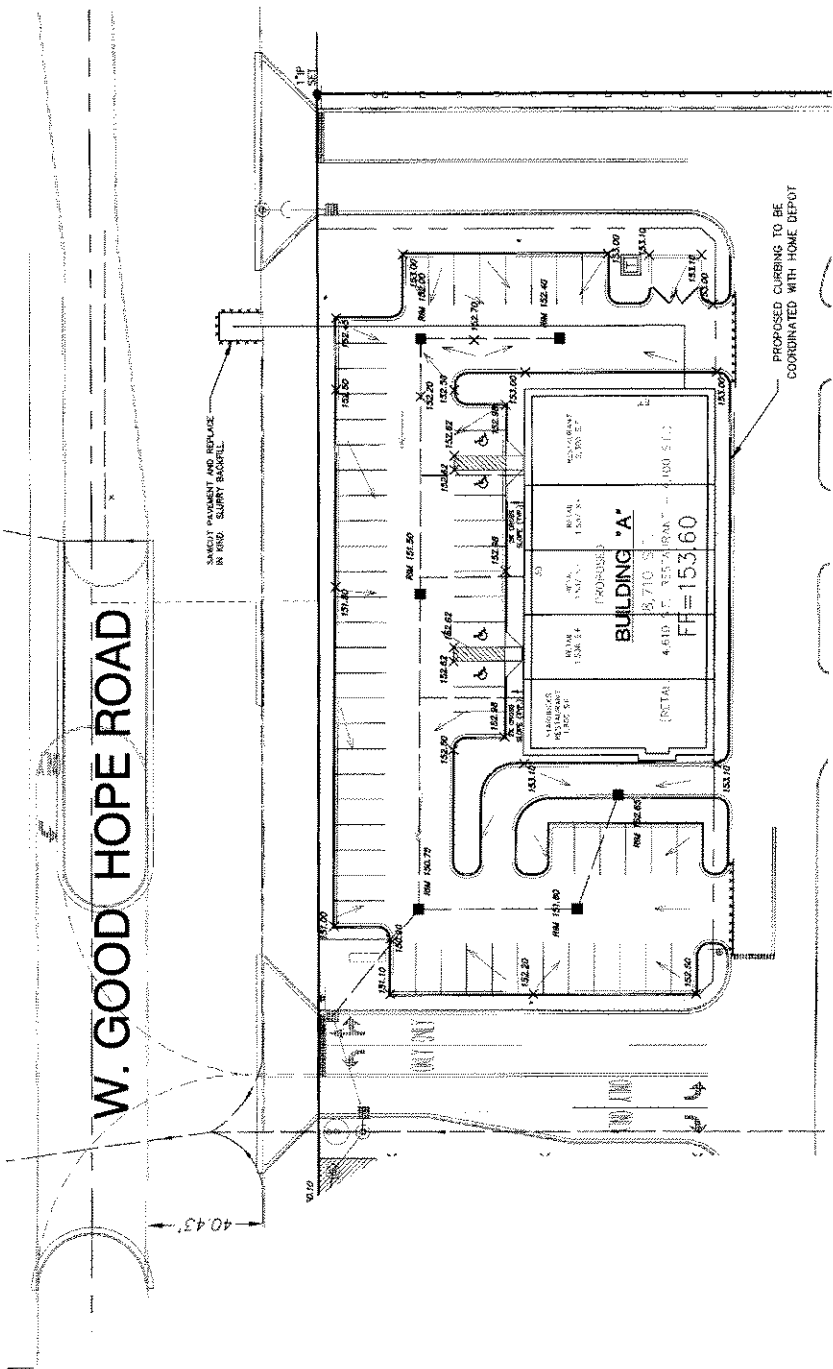
SILT FENCE DETAIL:

- INSTALL 2x4 POSTS AT 10' ON CENTER.
- INSTALL FABRIC PANELS TO 10' HEIGHT.
- INSTALL FABRIC PANELS TO 10' HEIGHT.
- INSTALL FABRIC PANELS TO 10' HEIGHT.

SILT FENCE DETAIL:

- INSTALL 2x4 POSTS AT 10' ON CENTER.
- INSTALL FABRIC PANELS TO 10' HEIGHT.
- INSTALL FABRIC PANELS TO 10' HEIGHT.
- INSTALL FABRIC PANELS TO 10' HEIGHT.

W. GOOD HOPE ROAD



SHARPLY PAVED
 (153.20)
 X
 SPOT SPOT (BACK OF CURB)
 153.20
 X
 SPOT SPOT (FRONT OF DRIVE)

CALL DRESSERS BEFORE 1-800-224-8511

USE OF ANY OF THE EXISTING UTILITY INSTALLATIONS AS SHOWN ON THIS PLAN IS AT THE USER'S RISK. THE USER SHALL BE RESPONSIBLE FOR OBTAINING ALL NECESSARY PERMITS FROM THE PROJECT AREA. THIS PLAN IS NOT TO BE USED FOR ANY OTHER PURPOSES WITHOUT THE WRITTEN CONSENT OF NATIONAL SURVEY & ENGINEERING.

NATIONAL SURVEY & ENGINEERING ASSOCIATES, INC.
 RESPONSIBILITY FOR DAMAGES, LIABILITY OR COSTS RESULTING FROM CHANGES OR ALTERATIONS MADE TO THIS PLAN WITHOUT THE WRITTEN CONSENT OF NATIONAL SURVEY & ENGINEERING.

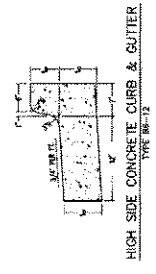
PROJECT MANAGER: David J. Clutz, P.E.
MID-AMERICA DEVELOPMENT
 MILWAUKEE, WI

PAVING PLAN

National Survey & Engineering
 1000 W. Wisconsin Ave.
 Suite 200
 Milwaukee, WI 53233
 Phone: 414-224-8511
 Fax: 414-224-8512
 Website: www.nse.com

REVISIONS	DATE	BY

DATE: 04/26/09 2:54:11 PM
 SHEET NO. 5 OF 8

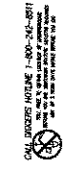


PROPOSED CURBS TO BE COORDINATED WITH HOME DEPOT

HIGH SIDE CONCRETE CURB & GUTTER
 TYPE B-1/2



- PROPOSED STORM SEWER
- PROPOSED SANITARY SERVICE
- PROPOSED WATER SERVICE
- EXISTING STORM SEWER
- EXISTING SANITARY SERVICE
- EXISTING WATER MAIN
- PROPOSED DRAINAGE AREAS



THE LOCATIONS OF EXISTING UTILITY INSTALLATIONS AS SHOWN ON THIS PLAN ARE BASED ON THE MOST RECENT AS-BUILT OR OTHER UNDERGROUND UTILITY INSTALLATIONS WITHIN THE PROJECT AREA THAT ARE NOT SHOWN.

NATIONAL SURVEY & ENGINEERING COMPANY, INC. ASSUMES NO LIABILITY OR LIABILITY FOR DAMAGES, LIABILITY OR COSTS RESULTING FROM CHANGES OF EXISTING UTILITIES OR FROM OMISSIONS OF UTILITIES FROM THIS PLAN. THE CONSULTING ENGINEER'S LIABILITY IS LIMITED TO THE CONSENT OF NATIONAL SURVEY & ENGINEERING.

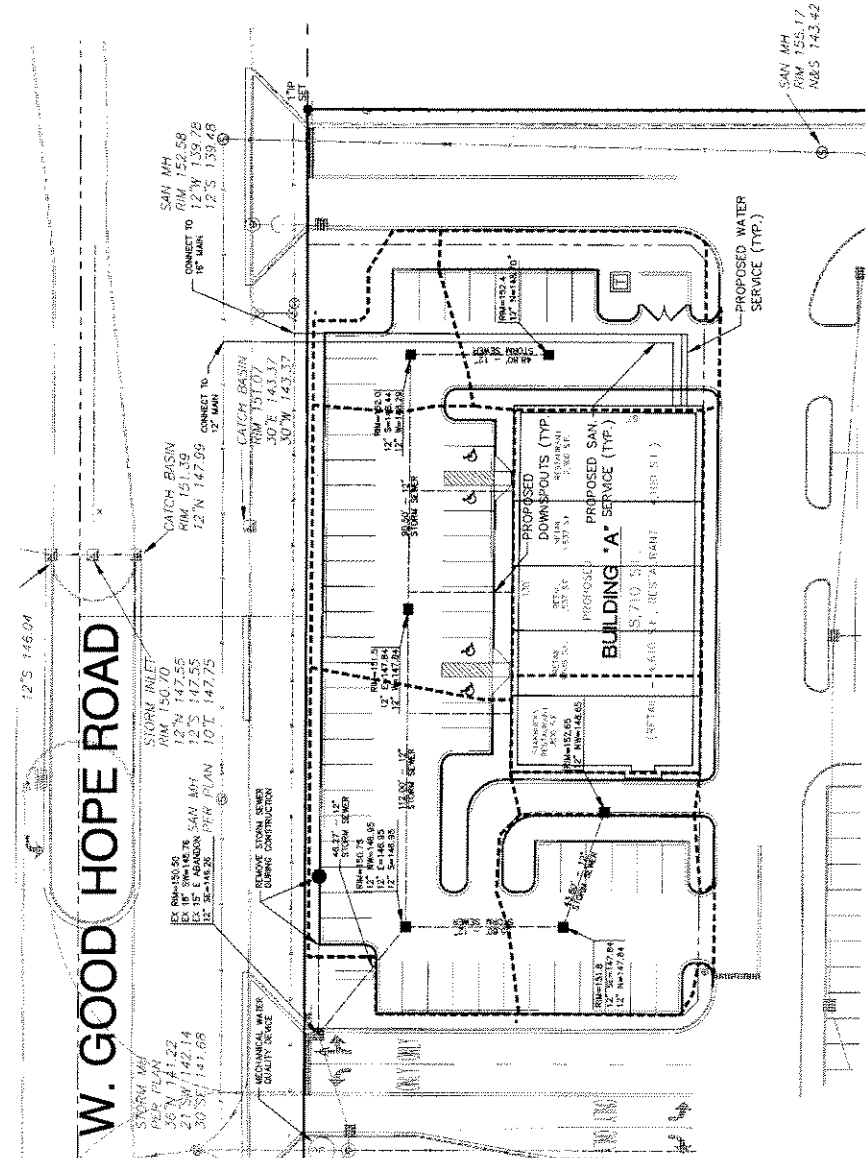
PROJECT MANAGER: David J. Cherry, P.E.
 MID-AMERICA DEVELOPMENT
 MILWAUKEE, WI

UTILITY PLAN

National Survey & Engineering
 1000 W. Wisconsin Ave.
 Suite 100
 Milwaukee, WI 53233
 Phone: 414-342-0000
 Fax: 414-342-0000
 Website: www.nse.com

REVISIONS	
DATE	BY

DATE: 04/29/08 SCALE: 1"=20'
 SHEET NO. 8 OF 8



W. GOOD HOPE ROAD

PLANT MATERIAL SCHEDULE

SHADE TREES

PLANT CODE	CONTAINER SIZE	ROOT SYSTEM	HEIGHT	SPREAD
PT 1	3 GAL	W/ROOT BALL	6'-8"	5'-6"
PT 2	5 GAL	W/ROOT BALL	8'-10"	7'-8"
PT 3	7 GAL	W/ROOT BALL	10'-12"	9'-10"
PT 4	10 GAL	W/ROOT BALL	12'-14"	11'-10"
PT 5	15 GAL	W/ROOT BALL	14'-16"	13'-10"
PT 6	20 GAL	W/ROOT BALL	16'-18"	15'-10"
PT 7	25 GAL	W/ROOT BALL	18'-20"	17'-10"
PT 8	30 GAL	W/ROOT BALL	20'-22"	19'-10"
PT 9	35 GAL	W/ROOT BALL	22'-24"	21'-10"
PT 10	40 GAL	W/ROOT BALL	24'-26"	23'-10"

ORNAMENTAL TREES

PLANT CODE	CONTAINER SIZE	ROOT SYSTEM	HEIGHT	SPREAD
PT 11	3 GAL	W/ROOT BALL	4'-6"	3'-6"
PT 12	5 GAL	W/ROOT BALL	5'-8"	4'-6"
PT 13	7 GAL	W/ROOT BALL	6'-10"	5'-6"
PT 14	10 GAL	W/ROOT BALL	8'-12"	6'-6"
PT 15	15 GAL	W/ROOT BALL	10'-14"	8'-6"
PT 16	20 GAL	W/ROOT BALL	12'-16"	10'-6"
PT 17	25 GAL	W/ROOT BALL	14'-18"	12'-6"
PT 18	30 GAL	W/ROOT BALL	16'-20"	14'-6"
PT 19	35 GAL	W/ROOT BALL	18'-22"	16'-6"
PT 20	40 GAL	W/ROOT BALL	20'-24"	18'-6"

EVERGREEN TREES

PLANT CODE	CONTAINER SIZE	ROOT SYSTEM	HEIGHT	SPREAD
PT 21	3 GAL	W/ROOT BALL	3'-6"	3'-6"
PT 22	5 GAL	W/ROOT BALL	4'-8"	4'-6"
PT 23	7 GAL	W/ROOT BALL	5'-10"	5'-6"
PT 24	10 GAL	W/ROOT BALL	7'-12"	6'-6"
PT 25	15 GAL	W/ROOT BALL	9'-14"	8'-6"
PT 26	20 GAL	W/ROOT BALL	11'-16"	10'-6"
PT 27	25 GAL	W/ROOT BALL	13'-18"	12'-6"
PT 28	30 GAL	W/ROOT BALL	15'-20"	14'-6"
PT 29	35 GAL	W/ROOT BALL	17'-22"	16'-6"
PT 30	40 GAL	W/ROOT BALL	19'-24"	18'-6"

DECIDUOUS SHRUBS

PLANT CODE	CONTAINER SIZE	ROOT SYSTEM	HEIGHT	SPREAD
PT 31	3 GAL	W/ROOT BALL	2'-6"	2'-6"
PT 32	5 GAL	W/ROOT BALL	3'-8"	3'-6"
PT 33	7 GAL	W/ROOT BALL	4'-10"	4'-6"
PT 34	10 GAL	W/ROOT BALL	6'-12"	5'-6"
PT 35	15 GAL	W/ROOT BALL	8'-14"	7'-6"
PT 36	20 GAL	W/ROOT BALL	10'-16"	9'-6"
PT 37	25 GAL	W/ROOT BALL	12'-18"	11'-6"
PT 38	30 GAL	W/ROOT BALL	14'-20"	13'-6"
PT 39	35 GAL	W/ROOT BALL	16'-22"	15'-6"
PT 40	40 GAL	W/ROOT BALL	18'-24"	17'-6"

EVERGREEN SHRUBS

PLANT CODE	CONTAINER SIZE	ROOT SYSTEM	HEIGHT	SPREAD
PT 41	3 GAL	W/ROOT BALL	2'-6"	2'-6"
PT 42	5 GAL	W/ROOT BALL	3'-8"	3'-6"
PT 43	7 GAL	W/ROOT BALL	4'-10"	4'-6"
PT 44	10 GAL	W/ROOT BALL	6'-12"	5'-6"
PT 45	15 GAL	W/ROOT BALL	8'-14"	7'-6"
PT 46	20 GAL	W/ROOT BALL	10'-16"	9'-6"
PT 47	25 GAL	W/ROOT BALL	12'-18"	11'-6"
PT 48	30 GAL	W/ROOT BALL	14'-20"	13'-6"
PT 49	35 GAL	W/ROOT BALL	16'-22"	15'-6"
PT 50	40 GAL	W/ROOT BALL	18'-24"	17'-6"

FLOWERING SHRUBS

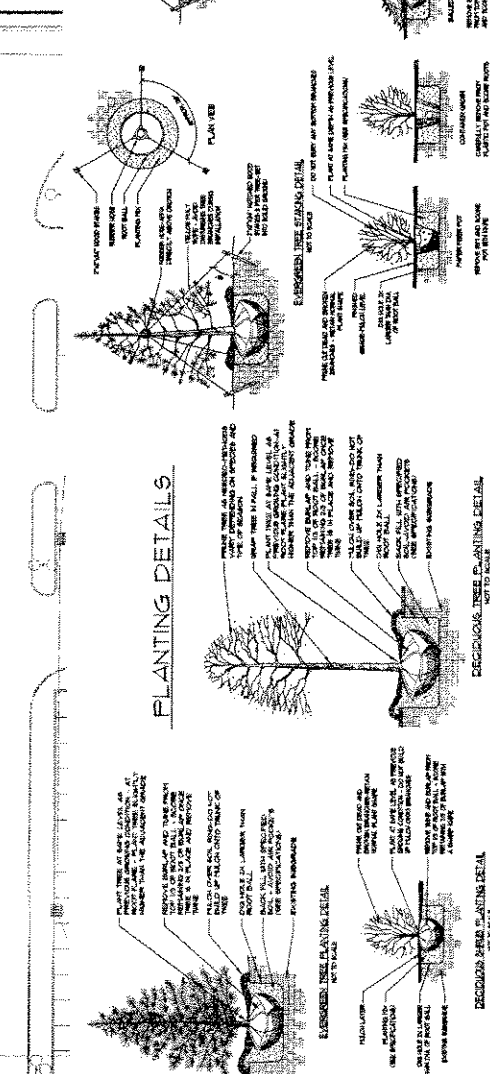
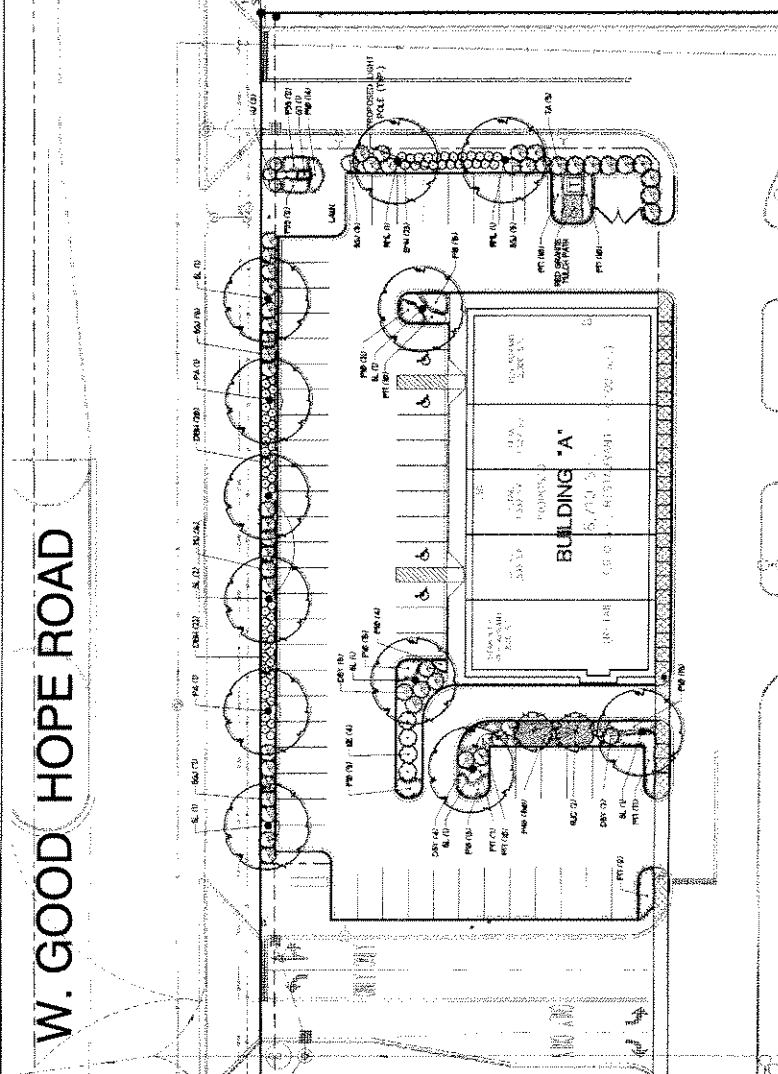
PLANT CODE	CONTAINER SIZE	ROOT SYSTEM	HEIGHT	SPREAD
PT 51	3 GAL	W/ROOT BALL	2'-6"	2'-6"
PT 52	5 GAL	W/ROOT BALL	3'-8"	3'-6"
PT 53	7 GAL	W/ROOT BALL	4'-10"	4'-6"
PT 54	10 GAL	W/ROOT BALL	6'-12"	5'-6"
PT 55	15 GAL	W/ROOT BALL	8'-14"	7'-6"
PT 56	20 GAL	W/ROOT BALL	10'-16"	9'-6"
PT 57	25 GAL	W/ROOT BALL	12'-18"	11'-6"
PT 58	30 GAL	W/ROOT BALL	14'-20"	13'-6"
PT 59	35 GAL	W/ROOT BALL	16'-22"	15'-6"
PT 60	40 GAL	W/ROOT BALL	18'-24"	17'-6"

ORNAMENTAL GRASSES

PLANT CODE	CONTAINER SIZE	ROOT SYSTEM	HEIGHT	SPREAD
PT 61	3 GAL	W/ROOT BALL	2'-6"	2'-6"
PT 62	5 GAL	W/ROOT BALL	3'-8"	3'-6"
PT 63	7 GAL	W/ROOT BALL	4'-10"	4'-6"
PT 64	10 GAL	W/ROOT BALL	6'-12"	5'-6"
PT 65	15 GAL	W/ROOT BALL	8'-14"	7'-6"
PT 66	20 GAL	W/ROOT BALL	10'-16"	9'-6"
PT 67	25 GAL	W/ROOT BALL	12'-18"	11'-6"
PT 68	30 GAL	W/ROOT BALL	14'-20"	13'-6"
PT 69	35 GAL	W/ROOT BALL	16'-22"	15'-6"
PT 70	40 GAL	W/ROOT BALL	18'-24"	17'-6"

PERENNIALS

PLANT CODE	CONTAINER SIZE	ROOT SYSTEM	HEIGHT	SPREAD
PT 71	3 GAL	W/ROOT BALL	1'-6"	1'-6"
PT 72	5 GAL	W/ROOT BALL	2'-8"	2'-6"
PT 73	7 GAL	W/ROOT BALL	3'-10"	3'-6"
PT 74	10 GAL	W/ROOT BALL	5'-12"	4'-6"
PT 75	15 GAL	W/ROOT BALL	7'-14"	6'-6"
PT 76	20 GAL	W/ROOT BALL	9'-16"	8'-6"
PT 77	25 GAL	W/ROOT BALL	11'-18"	10'-6"
PT 78	30 GAL	W/ROOT BALL	13'-20"	12'-6"
PT 79	35 GAL	W/ROOT BALL	15'-22"	14'-6"
PT 80	40 GAL	W/ROOT BALL	17'-24"	16'-6"



PLANTING DETAILS

GENERAL LANDSCAPE NOTES

1. CONSTRUCTION SHALL BE IN ACCORDANCE WITH THE LATEST EDITION OF THE INTERNATIONAL BUILDING CODE (IBC) AND ALL APPLICABLE LOCAL ORDINANCES.
2. ALL PLANTING SHALL BE IN ACCORDANCE WITH THE LATEST EDITION OF THE NATIONAL PLANTING CODE (NPC) AND ALL APPLICABLE LOCAL ORDINANCES.
3. ALL PLANTING SHALL BE DONE IN ACCORDANCE WITH THE LATEST EDITION OF THE NATIONAL PLANTING CODE (NPC) AND ALL APPLICABLE LOCAL ORDINANCES.
4. ALL PLANTING SHALL BE DONE IN ACCORDANCE WITH THE LATEST EDITION OF THE NATIONAL PLANTING CODE (NPC) AND ALL APPLICABLE LOCAL ORDINANCES.
5. ALL PLANTING SHALL BE DONE IN ACCORDANCE WITH THE LATEST EDITION OF THE NATIONAL PLANTING CODE (NPC) AND ALL APPLICABLE LOCAL ORDINANCES.
6. ALL PLANTING SHALL BE DONE IN ACCORDANCE WITH THE LATEST EDITION OF THE NATIONAL PLANTING CODE (NPC) AND ALL APPLICABLE LOCAL ORDINANCES.
7. ALL PLANTING SHALL BE DONE IN ACCORDANCE WITH THE LATEST EDITION OF THE NATIONAL PLANTING CODE (NPC) AND ALL APPLICABLE LOCAL ORDINANCES.
8. ALL PLANTING SHALL BE DONE IN ACCORDANCE WITH THE LATEST EDITION OF THE NATIONAL PLANTING CODE (NPC) AND ALL APPLICABLE LOCAL ORDINANCES.
9. ALL PLANTING SHALL BE DONE IN ACCORDANCE WITH THE LATEST EDITION OF THE NATIONAL PLANTING CODE (NPC) AND ALL APPLICABLE LOCAL ORDINANCES.
10. ALL PLANTING SHALL BE DONE IN ACCORDANCE WITH THE LATEST EDITION OF THE NATIONAL PLANTING CODE (NPC) AND ALL APPLICABLE LOCAL ORDINANCES.

FREE PRIMARY LANDSCAPE PLAN NOT FOR CONSTRUCTION

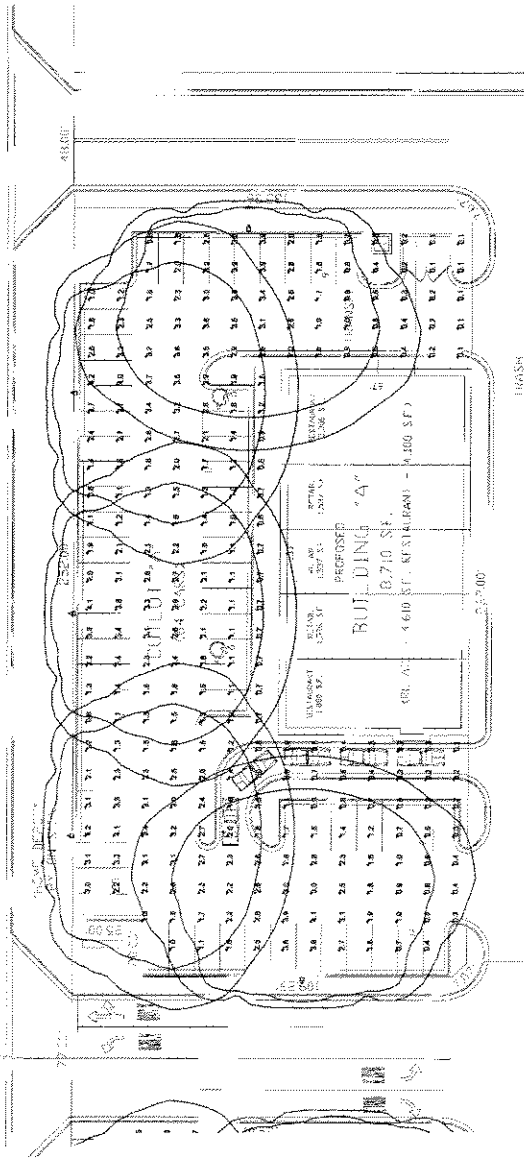
ALL INFORMATION CONTAINED ON THIS SHEET IS THE PROPERTY OF J.A. SMITH & ASSOCIATES, INC. AND IS NOT TO BE REPRODUCED OR TRANSMITTED IN ANY FORM OR BY ANY MEANS, ELECTRONIC OR MECHANICAL, INCLUDING PHOTOCOPYING, RECORDING, OR BY ANY INFORMATION STORAGE AND RETRIEVAL SYSTEM, WITHOUT THE WRITTEN PERMISSION OF J.A. SMITH & ASSOCIATES, INC.

LANDSCAPE ARCHITECT
 PROJECT MANAGER: David J. Cherry, P.E.
 MID-AMERICA DEVELOPMENT
 MILWAUKEE, WI

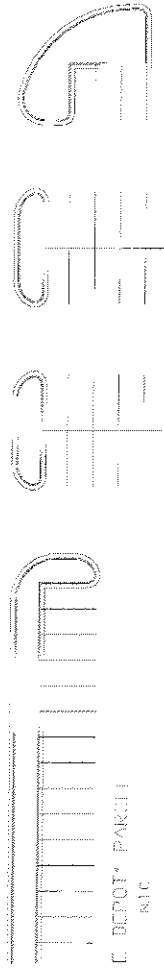
LANDSCAPE PLAN

NATIONAL SURVEY & ENGINEERING
 PROJECT NO. 2023-05
 SHEET NO. 7 OF 8
 DATE: 04/20/23

TOP LEFT



1/8\"/>



E. DEPOT PARK
N.C.

CALL DODDS HOTLINE 1-800-242-8811
FOR MORE INFORMATION ON ANY OF OUR PRODUCTS OR SERVICES
OR VISIT OUR WEBSITE WWW.DODDS.COM

ALL DIMENSIONS AND LOCATIONS ARE AS SHOWN ON THIS PLAN. ANY CHANGES TO THE PROJECT AREA THAT ARE NOT SHOWN HEREIN SHALL BE THE RESPONSIBILITY OF THE CLIENT.

MISSING SIZES & DIMENSIONS ASSUMES NO CHANGES TO THE PROJECT AREA. ANY CHANGES TO THE PROJECT AREA SHALL BE THE RESPONSIBILITY OF THE CLIENT.

LUMINAIRE SCHEDULE

Symbol	Label	Qty	Category Number	Description	Lamp	Fixture	Lumens	LF	Watts
□	A	16	K40-400A BR4SC	AREA LIGHT WITH HIGH BAY MOUNTING HOLE. OPTICS CLEAR PLAT GLASS.	ONE 40W WATT CLEAR INCANDESCENT MOUNTING HOLE. P-RASE START.	BR477-306	40000	0.75	485

2'8\"/>

STATISTICS

Description	Symbol	Avg	Max	Min	Max/Min	Avg/Min
OUTLDT A	+	13.6	4.2%	0.1%	42.01	17.91
OUTLDT B	+	13.6	4.6%	0.1%	43.01	18.41

MD-AMERICA DEVELOPMENT

MILWAUKEE, WI

LIGHTING PLAN

National Survey & Engineering

1000 N. Grand Ave.
Milwaukee, WI 53233
Phone: 414-333-8800
Fax: 414-333-8801
www.nse.com



PROJECT NUMBER: 30041 J. Davis, P.E.
DATE: 07/20/05 SCALE: 1/8\"/>

SHEET NO.
8 OF 8

DATE	03/28/03
REVISION	03/28/03
BY	03/28/03
CHECKED BY	03/28/03

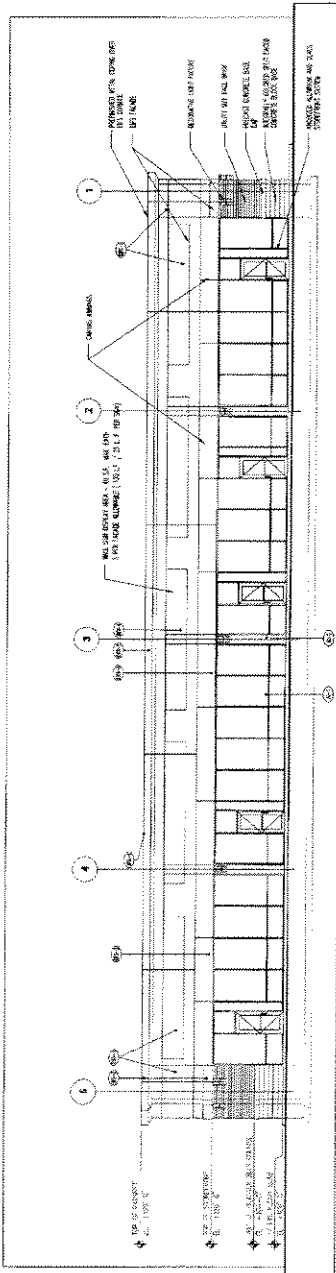
ELEVATIONS

THIS SET OF ELEVATIONS IS FOR INFORMATION ONLY. THE CONTRACTOR SHALL BE RESPONSIBLE FOR VERIFYING ALL DIMENSIONS AND MATERIALS. THE CONTRACTOR SHALL BE RESPONSIBLE FOR OBTAINING ALL NECESSARY PERMITS AND APPROVALS FROM THE LOCAL AUTHORITIES. THE CONTRACTOR SHALL BE RESPONSIBLE FOR OBTAINING ALL NECESSARY PERMITS AND APPROVALS FROM THE LOCAL AUTHORITIES.

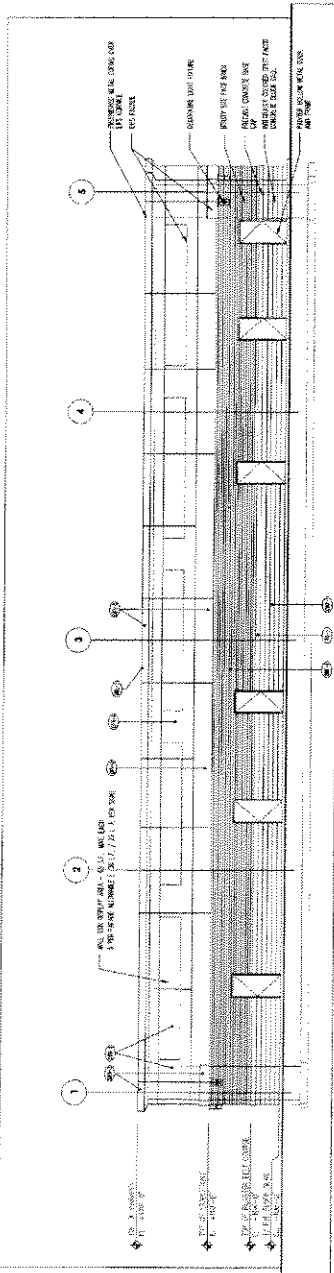
EL1

JOB NO.	0303
DATE	03/28/03

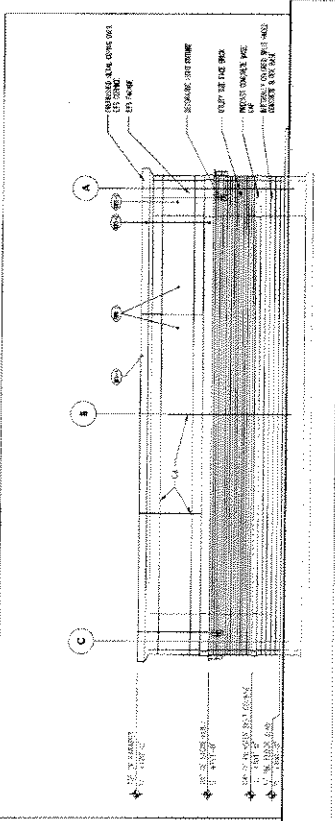
DESCRIPTION	MATERIAL/COLOR/TEXTURE	MANUFACTURER
EPS-1	EXTERIOR METALLIC AND FINES SYSTEM SOLID, 1/4" THICK	SPANGHER
EPS-2	EXTERIOR METALLIC AND FINES SYSTEM SOLID, 1/4" THICK	SPANGHER
EPS-3	EXTERIOR METALLIC AND FINES SYSTEM SOLID, 1/4" THICK	SPANGHER
PC-1	EXTERIOR METALLIC AND FINES SYSTEM SOLID, 1/4" THICK	SPANGHER
PS-1	EXTERIOR METALLIC AND FINES SYSTEM SOLID, 1/4" THICK	SPANGHER
PS-2	EXTERIOR METALLIC AND FINES SYSTEM SOLID, 1/4" THICK	SPANGHER
PS-3	EXTERIOR METALLIC AND FINES SYSTEM SOLID, 1/4" THICK	SPANGHER
PS-4	EXTERIOR METALLIC AND FINES SYSTEM SOLID, 1/4" THICK	SPANGHER
PS-5	EXTERIOR METALLIC AND FINES SYSTEM SOLID, 1/4" THICK	SPANGHER
PS-6	EXTERIOR METALLIC AND FINES SYSTEM SOLID, 1/4" THICK	SPANGHER
PS-7	EXTERIOR METALLIC AND FINES SYSTEM SOLID, 1/4" THICK	SPANGHER
PS-8	EXTERIOR METALLIC AND FINES SYSTEM SOLID, 1/4" THICK	SPANGHER
PS-9	EXTERIOR METALLIC AND FINES SYSTEM SOLID, 1/4" THICK	SPANGHER
PS-10	EXTERIOR METALLIC AND FINES SYSTEM SOLID, 1/4" THICK	SPANGHER
PS-11	EXTERIOR METALLIC AND FINES SYSTEM SOLID, 1/4" THICK	SPANGHER
PS-12	EXTERIOR METALLIC AND FINES SYSTEM SOLID, 1/4" THICK	SPANGHER
PS-13	EXTERIOR METALLIC AND FINES SYSTEM SOLID, 1/4" THICK	SPANGHER
PS-14	EXTERIOR METALLIC AND FINES SYSTEM SOLID, 1/4" THICK	SPANGHER
PS-15	EXTERIOR METALLIC AND FINES SYSTEM SOLID, 1/4" THICK	SPANGHER
PS-16	EXTERIOR METALLIC AND FINES SYSTEM SOLID, 1/4" THICK	SPANGHER
PS-17	EXTERIOR METALLIC AND FINES SYSTEM SOLID, 1/4" THICK	SPANGHER
PS-18	EXTERIOR METALLIC AND FINES SYSTEM SOLID, 1/4" THICK	SPANGHER
PS-19	EXTERIOR METALLIC AND FINES SYSTEM SOLID, 1/4" THICK	SPANGHER
PS-20	EXTERIOR METALLIC AND FINES SYSTEM SOLID, 1/4" THICK	SPANGHER
PS-21	EXTERIOR METALLIC AND FINES SYSTEM SOLID, 1/4" THICK	SPANGHER
PS-22	EXTERIOR METALLIC AND FINES SYSTEM SOLID, 1/4" THICK	SPANGHER
PS-23	EXTERIOR METALLIC AND FINES SYSTEM SOLID, 1/4" THICK	SPANGHER
PS-24	EXTERIOR METALLIC AND FINES SYSTEM SOLID, 1/4" THICK	SPANGHER
PS-25	EXTERIOR METALLIC AND FINES SYSTEM SOLID, 1/4" THICK	SPANGHER
PS-26	EXTERIOR METALLIC AND FINES SYSTEM SOLID, 1/4" THICK	SPANGHER
PS-27	EXTERIOR METALLIC AND FINES SYSTEM SOLID, 1/4" THICK	SPANGHER
PS-28	EXTERIOR METALLIC AND FINES SYSTEM SOLID, 1/4" THICK	SPANGHER
PS-29	EXTERIOR METALLIC AND FINES SYSTEM SOLID, 1/4" THICK	SPANGHER
PS-30	EXTERIOR METALLIC AND FINES SYSTEM SOLID, 1/4" THICK	SPANGHER
PS-31	EXTERIOR METALLIC AND FINES SYSTEM SOLID, 1/4" THICK	SPANGHER
PS-32	EXTERIOR METALLIC AND FINES SYSTEM SOLID, 1/4" THICK	SPANGHER
PS-33	EXTERIOR METALLIC AND FINES SYSTEM SOLID, 1/4" THICK	SPANGHER
PS-34	EXTERIOR METALLIC AND FINES SYSTEM SOLID, 1/4" THICK	SPANGHER
PS-35	EXTERIOR METALLIC AND FINES SYSTEM SOLID, 1/4" THICK	SPANGHER
PS-36	EXTERIOR METALLIC AND FINES SYSTEM SOLID, 1/4" THICK	SPANGHER
PS-37	EXTERIOR METALLIC AND FINES SYSTEM SOLID, 1/4" THICK	SPANGHER
PS-38	EXTERIOR METALLIC AND FINES SYSTEM SOLID, 1/4" THICK	SPANGHER
PS-39	EXTERIOR METALLIC AND FINES SYSTEM SOLID, 1/4" THICK	SPANGHER
PS-40	EXTERIOR METALLIC AND FINES SYSTEM SOLID, 1/4" THICK	SPANGHER
PS-41	EXTERIOR METALLIC AND FINES SYSTEM SOLID, 1/4" THICK	SPANGHER
PS-42	EXTERIOR METALLIC AND FINES SYSTEM SOLID, 1/4" THICK	SPANGHER
PS-43	EXTERIOR METALLIC AND FINES SYSTEM SOLID, 1/4" THICK	SPANGHER
PS-44	EXTERIOR METALLIC AND FINES SYSTEM SOLID, 1/4" THICK	SPANGHER
PS-45	EXTERIOR METALLIC AND FINES SYSTEM SOLID, 1/4" THICK	SPANGHER
PS-46	EXTERIOR METALLIC AND FINES SYSTEM SOLID, 1/4" THICK	SPANGHER
PS-47	EXTERIOR METALLIC AND FINES SYSTEM SOLID, 1/4" THICK	SPANGHER
PS-48	EXTERIOR METALLIC AND FINES SYSTEM SOLID, 1/4" THICK	SPANGHER
PS-49	EXTERIOR METALLIC AND FINES SYSTEM SOLID, 1/4" THICK	SPANGHER
PS-50	EXTERIOR METALLIC AND FINES SYSTEM SOLID, 1/4" THICK	SPANGHER



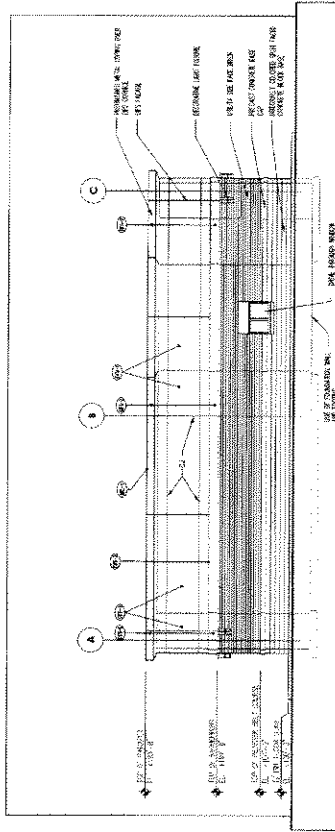
NORTH ELEVATION
SCALE: 3/8" = 1'-0"



SOUTH ELEVATION
SCALE: 3/8" = 1'-0"

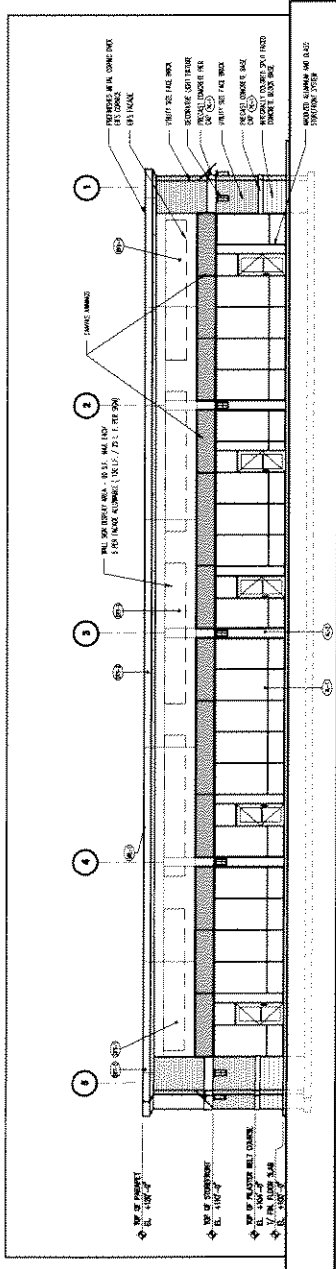


EAST ELEVATION
SCALE: 3/8" = 1'-0"

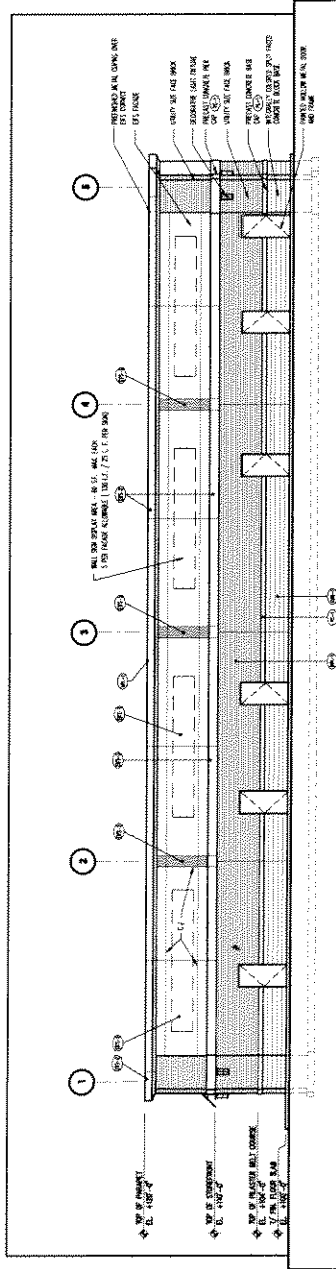


WEST ELEVATION
SCALE: 3/8" = 1'-0"

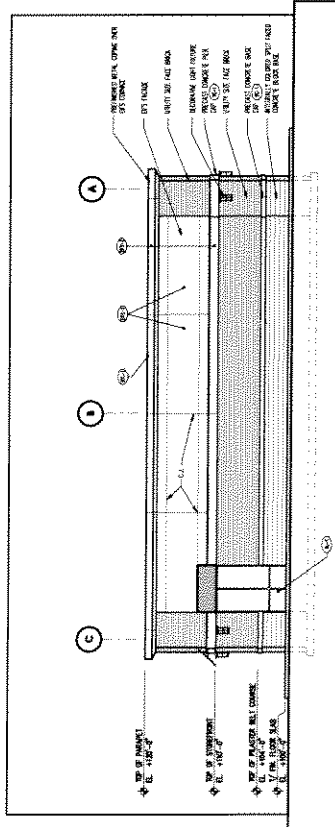
TERMINATION	MARKING / DESCRIPTION	MANUFACTURER
EPS-1	EXTERIOR INSULATION AND FINISH SYSTEM POLYURETHANE FOAM BOARD FIBERGLASS FABRIC REINFORCEMENT ACRYLIC FINISH COAT	STYROFOAM
EPS-2	EXTERIOR INSULATION AND FINISH SYSTEM POLYURETHANE FOAM BOARD FIBERGLASS FABRIC REINFORCEMENT ACRYLIC FINISH COAT	STYROFOAM
EPS-3	EXTERIOR INSULATION AND FINISH SYSTEM POLYURETHANE FOAM BOARD FIBERGLASS FABRIC REINFORCEMENT ACRYLIC FINISH COAT	STYROFOAM
PC-1	PRECAST CONCRETE CURB AND WALKWAY CONCRETE FORMS - COLOR FINISH AND POINTS BY: HARRIS	FORMS
CMF-1	PRECAST CONCRETE CURB AND WALKWAY CONCRETE FORMS - COLOR FINISH AND POINTS BY: HARRIS	FORMS
BR-1	BRICK CLAY COLOR FINISH AND POINTS BY: HARRIS	BRICK
AL-1	ALUMINUM EXTRUSION COLOR FINISH AND POINTS BY: HARRIS	ALUMINUM
AL-2	ALUMINUM EXTRUSION COLOR FINISH AND POINTS BY: HARRIS	ALUMINUM



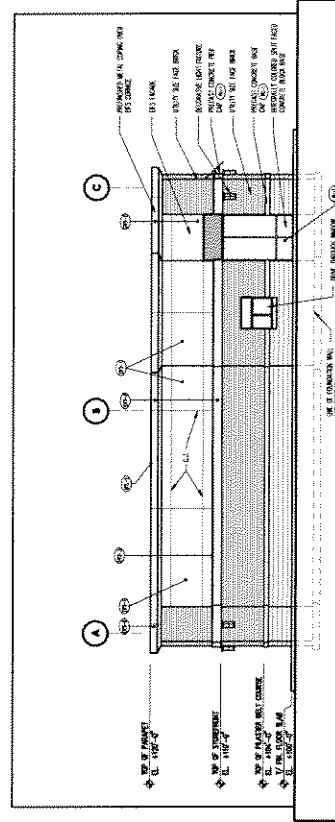
4.1 NORTH ELEVATION
SCALE: 1/8" = 1'-0"



4.2 SOUTH ELEVATION
SCALE: 1/8" = 1'-0"



4.3 EAST ELEVATION
SCALE: 3/16" = 1'-0"



4.4 WEST ELEVATION
SCALE: 3/16" = 1'-0"