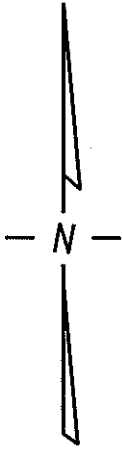


S.W. 1/4 SEC. 12, T.7N., R.21E.

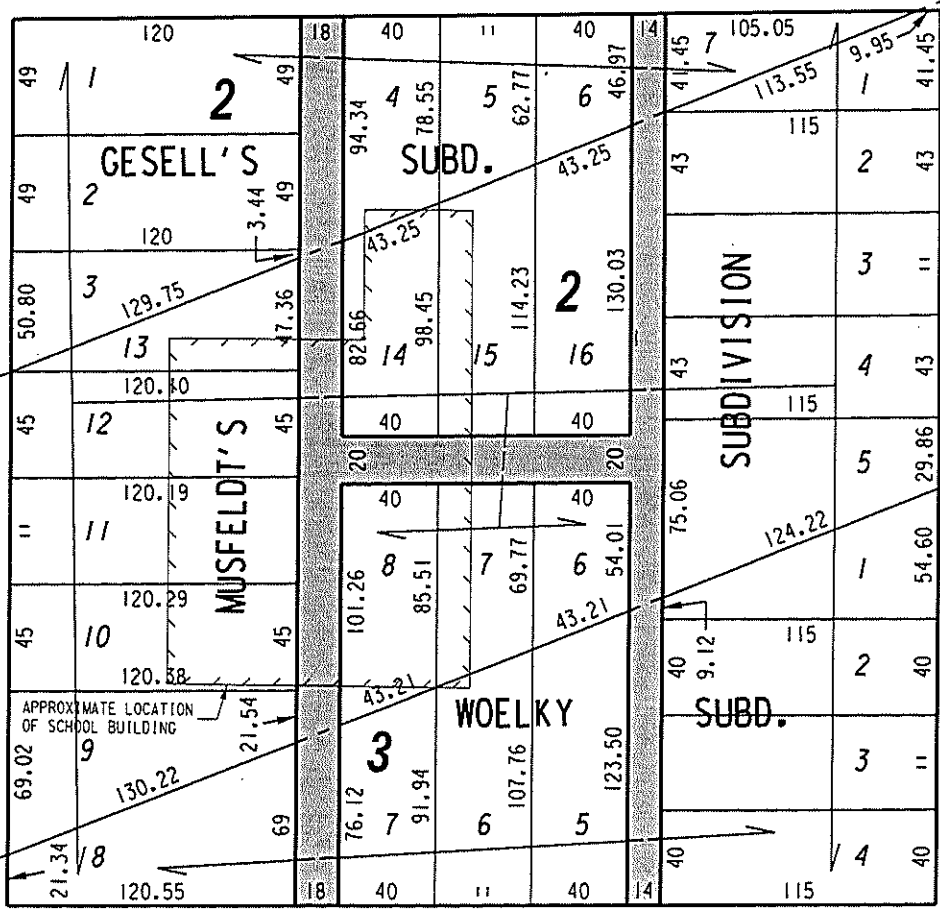
287



(CITY OF MILWAUKEE)
TOWNSEND ELEMENTARY SCHOOL
TAX KEY NO.
287-1602-000

W. Townsend St. (60' R.O.W.)

N. Sherman Blvd. (120' R.O.W.)
SEC. LINE



N. 42nd St. (60' R.O.W.)

W. Bernhard Pl. (50' R.O.W.)


 UNIMPROVED PUBLIC ALLEYS
(NOT IN USE) PROPOSED
TO BE VACATED

EXHIBIT "A"
FILE NO. 130389
INFRASTRUCTURE SERVICES DIVISION
MILWAUKEE, WISCONSIN

ASSIGNED TO: W.E. FUCHS
DRAWN BY: W.E.F.
PROJECT/GRANT NO.: WK52337333
APPROVED BY:

CH'K'D. BY: W.E. FUCHS
DATE: JULY 17, 2013
SCALE: 1" = 80'

7TH ALDERMANIC DISTRICT
ALD. WILLIE C. WADE

Marcia Cornell
CENTRAL DRAFTING & RECORDS MANAGER

[Signature]
CITY ENGINEER