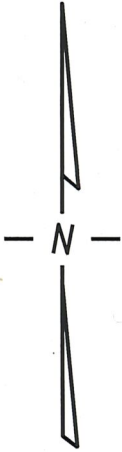


S.E. 1/4 SEC. 25, T.7N., R.21E.

401

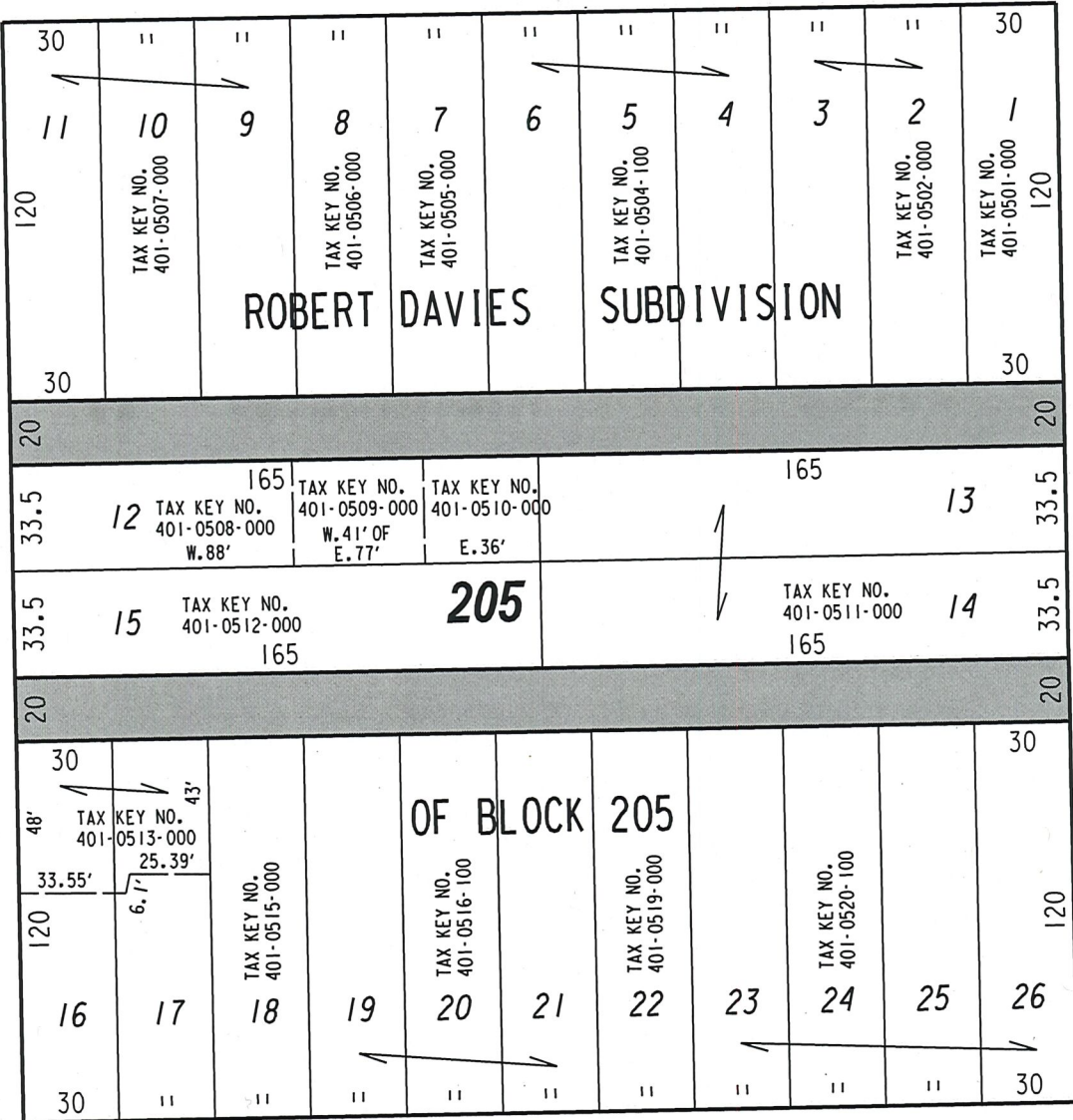


(100' R.O.W.)

W. Wisconsin Ave.

1/4 SEC. LINE

St.



(70' R.O.W.)

N. 28th

SEC. LINE

(68' R.O.W.)

N. 27th

W. Michigan St.

(80' R.O.W.)

PUBLIC ALLEYS PROPOSED TO BE VACATED

REVISED: DECEMBER 19, 2019
OWNERSHIPS REVISED

EXHIBIT "A"
FILE NO. 171504
INFRASTRUCTURE SERVICES DIVISION

MILWAUKEE, WISCONSIN

ASSIGNED TO: W. FUCHS

CH'K'D. BY: W. FUCHS

DRAWN BY: W.F.

DATE: JAN. 22, 2018

PROJECT/GRANT NO.: WK52337408

SCALE: 1" = 60'

APPROVED BY: