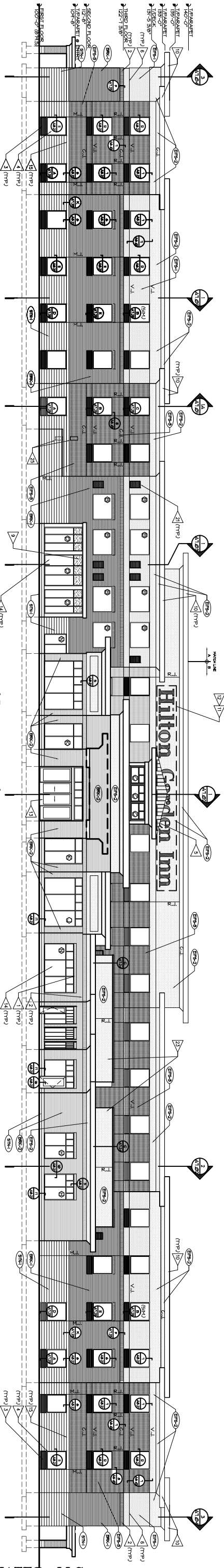
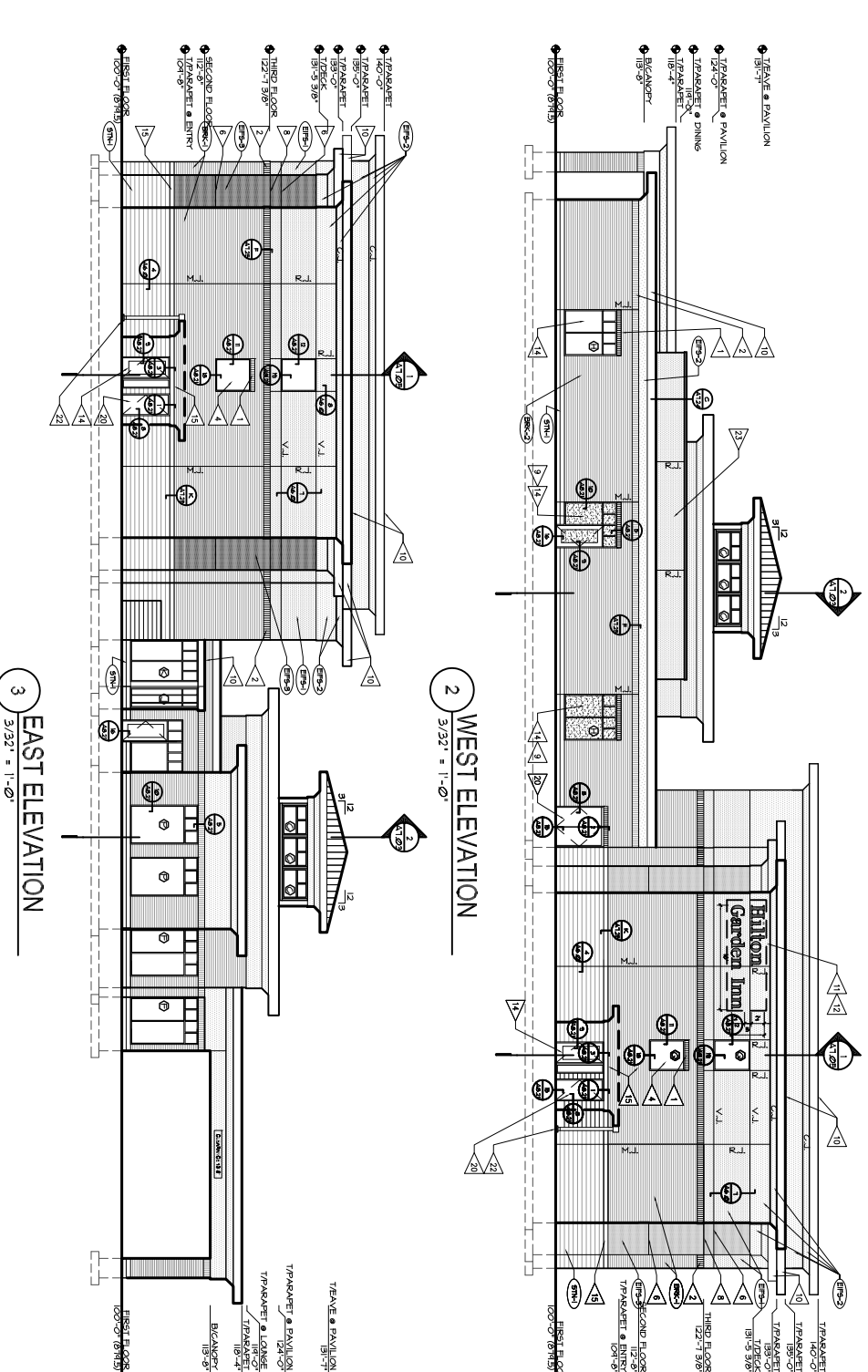




GARY BRINK & ASSOCIATES
ARCHITECTS
8401 EXCELSIOR DRIVE
MADISON, WI 53717
608-829-1790
608-829-3056 (FAX)

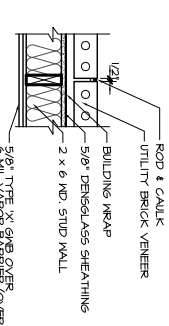


1 NORTH ELEVATION
3/32" = 1'-0"

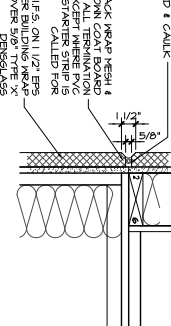


2 WEST ELEVATION
3/32" = 1'-0"

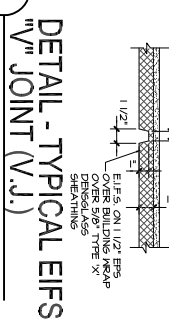
3 EAST ELEVATION
3/32" = 1'-0"



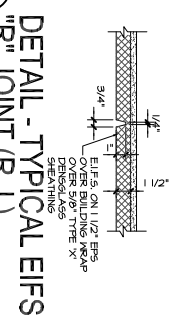
4 DETAIL - TYPICAL MASONRY MOVEMENT JOINT (M.J.)
1" = 1'-0"



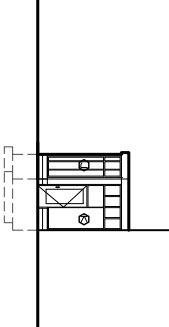
6 DETAIL - TYPICAL EIFS CONTROL JOINT (C.J.)
1 1/2" = 1'-0"



7 DETAIL - TYPICAL EIFS V-JOINT (V.J.)
1 1/2" = 1'-0"



8 DETAIL - TYPICAL EIFS R-JOINT (R.J.)
1 1/2" = 1'-0"



5 SPA HIDDEN EAST ELEVATION
3/32" = 1'-0"

- EXTERIOR ELEVATION NOTES**
1. ALL ARCHITECTURAL SURFACED CONCRETE BLOCK TO BE BN-1 UNLESS NOTED OTHERWISE.
 2. ALL BRICK TO BE UTILITY BRICK UNLESS NOTED OTHERWISE.
 3. ALL EIFS TO BE EIFS UNLESS NOTED OTHERWISE.
 4. ALL EIFS TO BE 4 1/2" THICK UNLESS OTHERWISE NOTED.
 5. REFER TO PROJECT SPECIFICATIONS FOR EXTERIOR FINISH INDEX.
 6. ALL WINDOWS TO BE TYPE 'A' UNLESS NOTED OTHERWISE. REFER TO DRAWING A400 FOR WINDOW TYPES.
 7. ALL WINDOWS AND HALF GLAZED DOORS TO MATCH ADJACENT MATERIAL COLOR UNLESS NOTED OTHERWISE.
 8. ALL UNITS ON EXTERIOR TO BE GALVANIZED AND PAINTED TO MATCH EXTERIOR FINISH MATERIAL.
 9. ALL VERTICAL SURFACES OF EIFS SHALL BE 4" THICK.
 10. ALL WINDOWS GLAZING TO BE CLEAR UNLESS NOTED OTHERWISE.

MATL	COLOR	MANUFACTURER
UTILITY BRICK #1	CONCRETE	BRIDGEMAN CLAY PRODUCTS
UTILITY BRICK #2	CONCRETE	BRIDGEMAN CLAY PRODUCTS
UTILITY BRICK #3	CONCRETE	BRIDGEMAN CLAY PRODUCTS
UTILITY BRICK #4	CONCRETE	BRIDGEMAN CLAY PRODUCTS
UTILITY BRICK #5	CONCRETE	BRIDGEMAN CLAY PRODUCTS
ARCHITECTURAL CONCRETE BLOCK	CONCRETE	BRIDGEMAN CLAY PRODUCTS
CONCRETE BLOCK	CONCRETE	BRIDGEMAN CLAY PRODUCTS
EIFS #1	CONCRETE	BRIDGEMAN CLAY PRODUCTS
EIFS #2	CONCRETE	BRIDGEMAN CLAY PRODUCTS
EIFS #3	CONCRETE	BRIDGEMAN CLAY PRODUCTS
EIFS #4	CONCRETE	BRIDGEMAN CLAY PRODUCTS
EIFS #5	CONCRETE	BRIDGEMAN CLAY PRODUCTS
CORNER / FINISH	CONCRETE	BRIDGEMAN CLAY PRODUCTS
STANDING SEAM METAL ROOF	CONCRETE	BRIDGEMAN CLAY PRODUCTS
GLAZING / GLAZERS	CONCRETE	BRIDGEMAN CLAY PRODUCTS
EXTERIOR HI DOOR / FINISH	CONCRETE	BRIDGEMAN CLAY PRODUCTS
GLAZING / GLAZERS	CONCRETE	BRIDGEMAN CLAY PRODUCTS
GLAZING / GLAZERS	CONCRETE	BRIDGEMAN CLAY PRODUCTS
GLAZING / GLAZERS	CONCRETE	BRIDGEMAN CLAY PRODUCTS
GLAZING / GLAZERS	CONCRETE	BRIDGEMAN CLAY PRODUCTS

- EXTERIOR ELEVATION KEY NOTES**
1. 8" HIGH UTILITY BRICK SOLIDER COURSE
 2. 1 1/2" UTILITY BRICK SOLIDER COURSE WITH 1" PROJECTION (BRICK)
 3. 1/4" V-GROOVE (TYP)
 4. 1/4" V-GROOVE (TYP)
 5. 1/4" V-GROOVE (TYP)
 6. 1/4" V-GROOVE (TYP)
 7. 1/4" V-GROOVE (TYP)
 8. 1/4" V-GROOVE (TYP)
 9. 1/4" V-GROOVE (TYP)
 10. 1/4" V-GROOVE (TYP)
 11. 1/4" V-GROOVE (TYP)
 12. 1/4" V-GROOVE (TYP)
 13. 1/4" V-GROOVE (TYP)
 14. 1/4" V-GROOVE (TYP)
 15. 1/4" V-GROOVE (TYP)
 16. 1/4" V-GROOVE (TYP)
 17. 1/4" V-GROOVE (TYP)
 18. 1/4" V-GROOVE (TYP)
 19. 1/4" V-GROOVE (TYP)
 20. 1/4" V-GROOVE (TYP)
 21. 1/4" V-GROOVE (TYP)
 22. 1/4" V-GROOVE (TYP)
 23. 1/4" V-GROOVE (TYP)
 24. 1/4" V-GROOVE (TYP)
 25. 1/4" V-GROOVE (TYP)