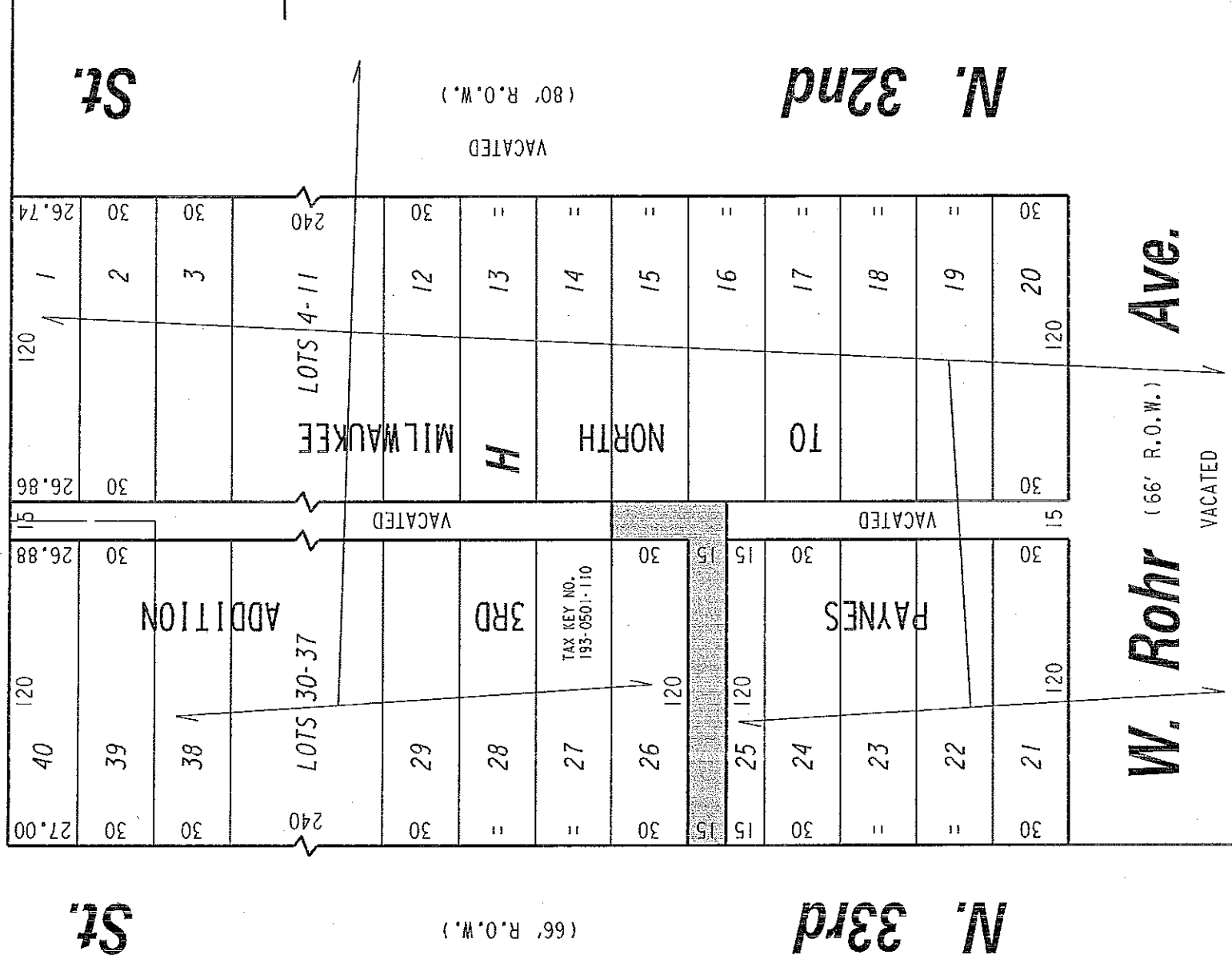


(50' R.O.W.)

W. Custer Ave.



St.

(66' R.O.W.)

N. 33rd

(80' R.O.W.)

N. 32nd

W. Rohr Ave.

( MAP 1 OF 2 )



PUBLIC ALLEY PROPOSED TO BE VACATED

EXHIBIT "A"

FILE NO. 141872

INFRASTRUCTURE SERVICES DIVISION

MILWAUKEE, WISCONSIN

ASSIGNED TO: W. FUCHS

CH'K'D. BY: W. FUCHS

DRAWN BY: W.F.

DATE: APRIL 13, 2015

PROJECT/GRANT NO.: WK52337369

SCALE: 1" = 60'

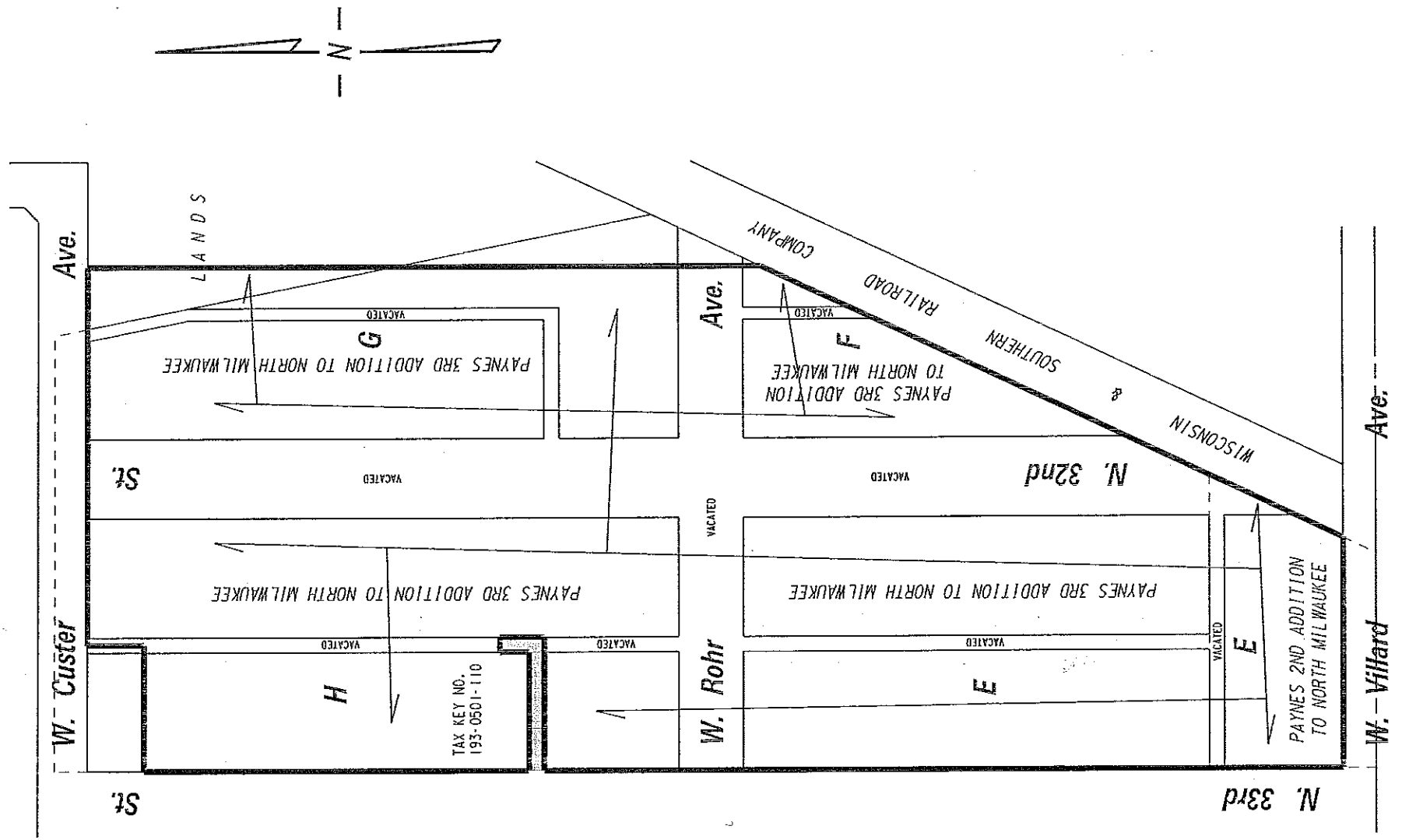
APPROVED BY:

*[Signature]*

Maicia Cornell

CENTRAL DRAFTING & RECORDS MANAGER

CITY ENGINEER



( MAP 2 OF 2 )



PUBLIC ALLEY  
PROPOSED TO  
BE VACATED

EXHIBIT "A"  
FILE NO. 141872  
INFRASTRUCTURE SERVICES DIVISION

MILWAUKEE, WISCONSIN  
ASSIGNED TO: W. FUCHS  
CH'K'D. BY: W. FUCHS  
DRAWN BY: W.F.  
DATE: APRIL 13, 2015  
PROJECT/GRANT NO.: WK52337369  
SCALE: 1" = NTS  
APPROVED BY:

*Maivia Lornnell*  
CENTRAL DRAFTING & RECORDS MANAGER  
for CITY ENGINEER