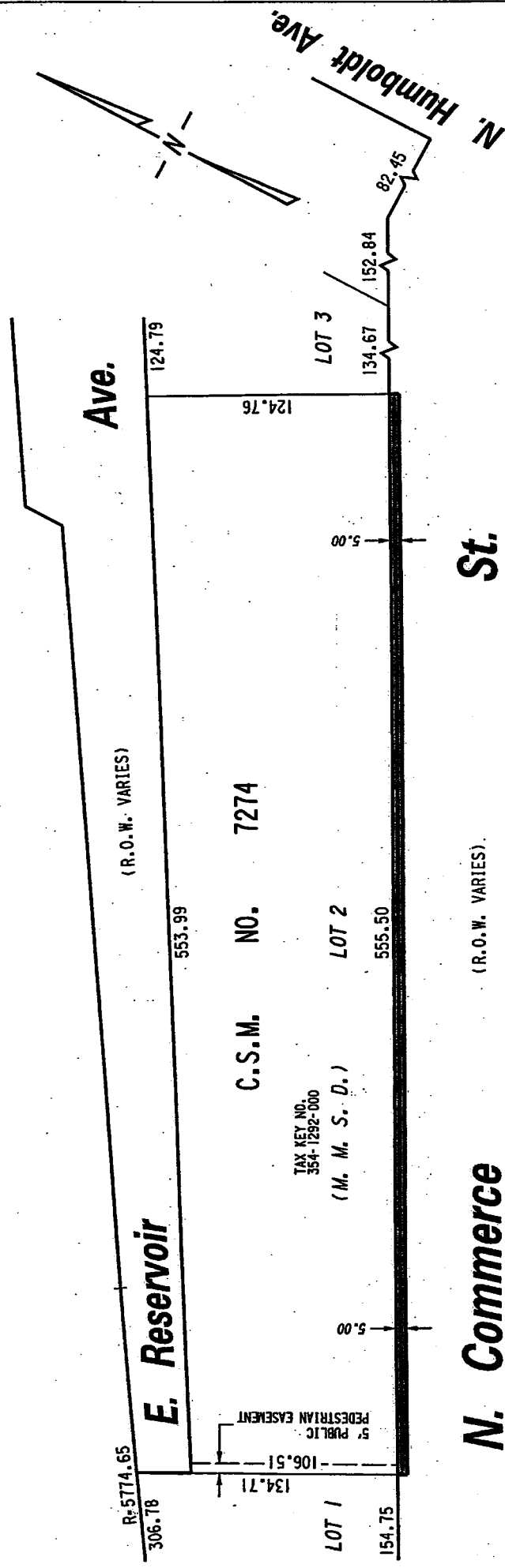


354

N.W. 1/4 SEC. 21, T.7N., R.22E.



(R.O.W. VARIES)

(R.O.W. VARIES)

R-5774.65

306.78

E. Reservoir

553.99

C.S.M. NO. 7274

TAX KEY NO.  
354-1292-000

(M. M. S. D.)

LOT 2

555.50

5.00

5' PUBLIC PEDESTRIAN EASEMENT

106.51

LOT 1

154.75

124.76

LOT 3

134.67

152.84

82.45

Ave.

N. Commerce

St.

EXHIBIT "A"

FILE NO. 030446

INFRASTRUCTURE SERVICES DIVISION

MILWAUKEE, WISCONSIN

ASSIGNED TO: W.E. FUCHS CH'K'D. BY: W.E. FUCHS

DRAWN BY: W.E.F. DATE: FEB. 11, 2004

PROJECT/GRANT NO.: WK52337190 SCALE: 1" = 60'

APPROVED BY:

*Maxine Lindholm*  
CENTRAL DRAFTING & RECORDS MANAGER

*W. E. Fuchs*  
CIVIL ENGINEER

PORTION OF PUBLIC STREET PROPOSED TO BE VACATED