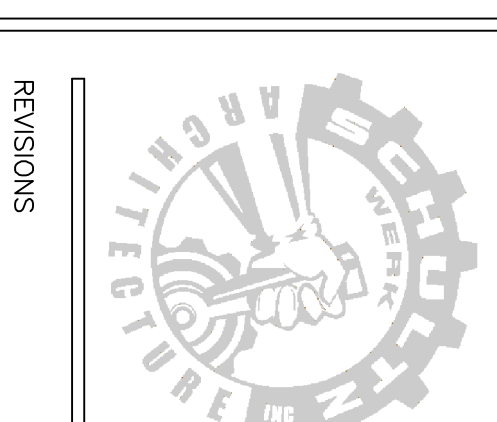


FACADE ALTERATIONS HECTOR SALINAS

814-816 WEST HISTORIC MITCHELL
MILWAUKEE, WI 53202

ARCHITECT:
**SchultzWerk
Architecture, Inc.**
2515 NORTH 68TH STREET
MILWAUKEE, WI 53213
414.778.1187
swe@swinc.com

ARCHITECT:
KEITH SCHULTZ, AIA



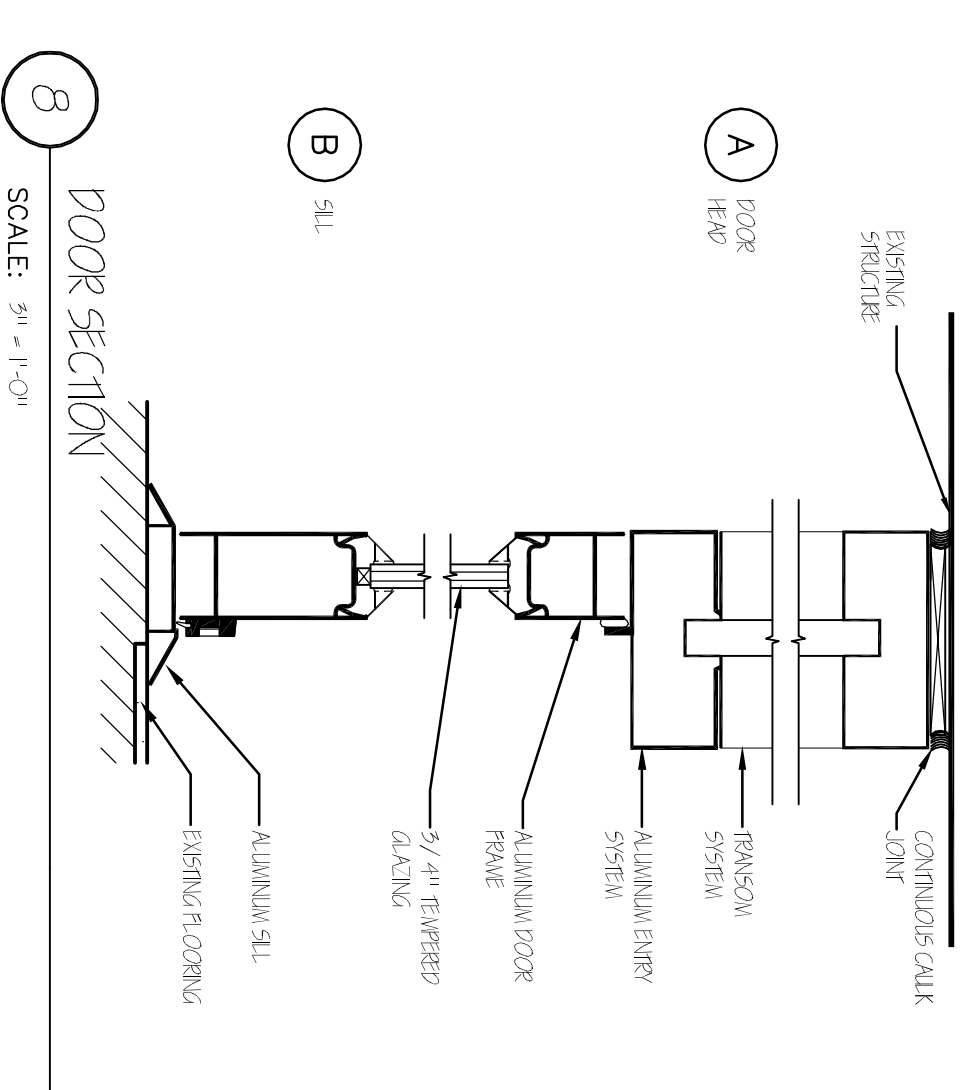
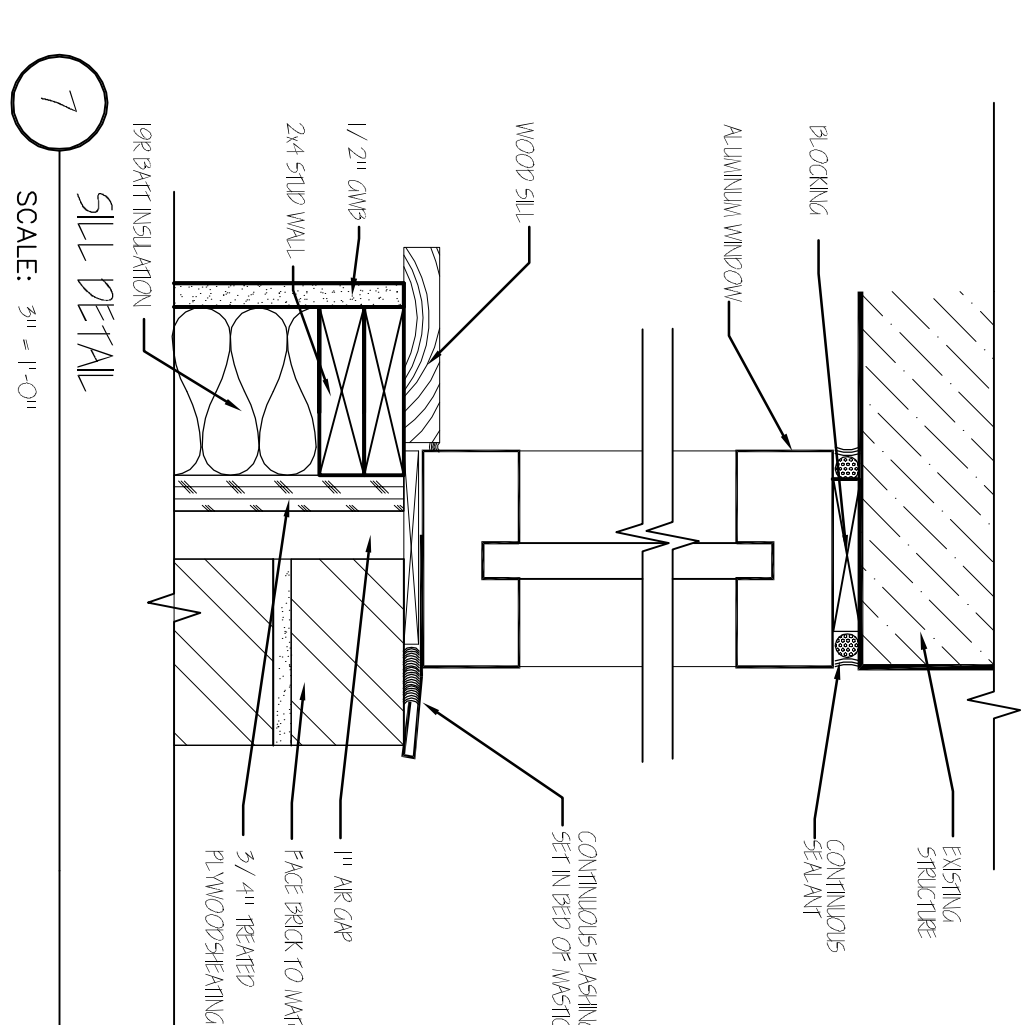
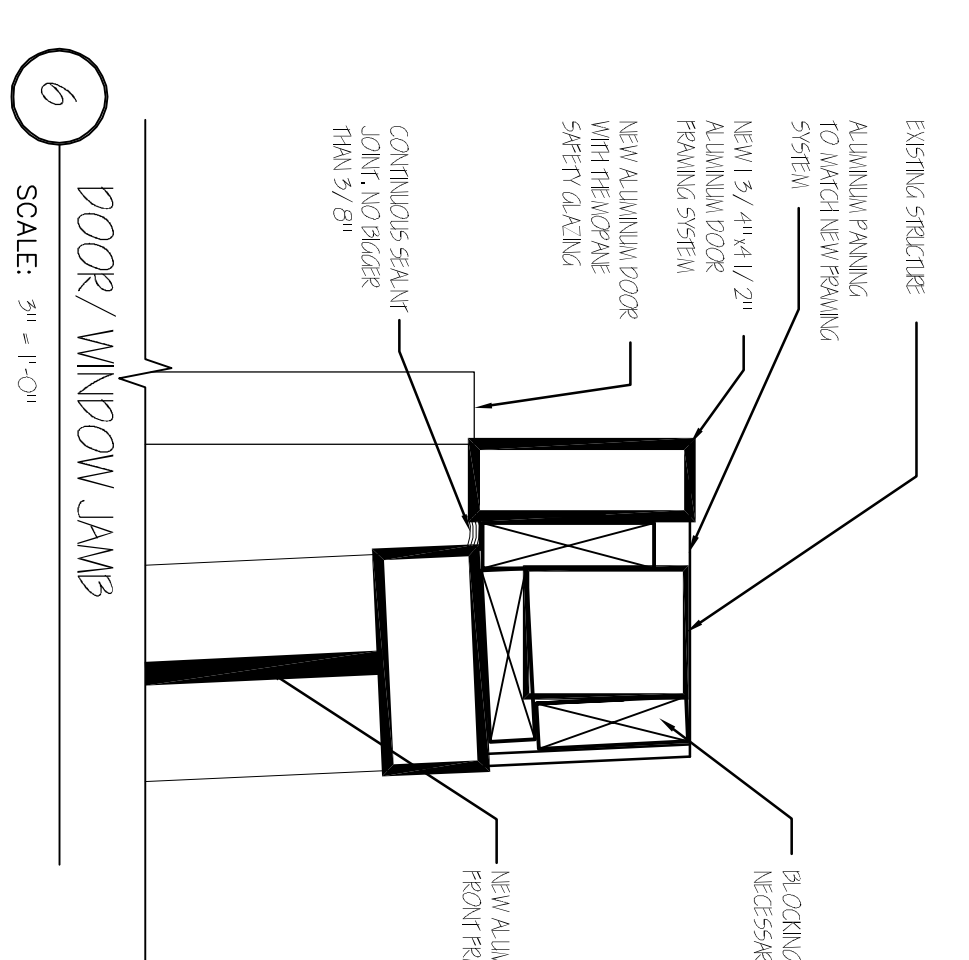
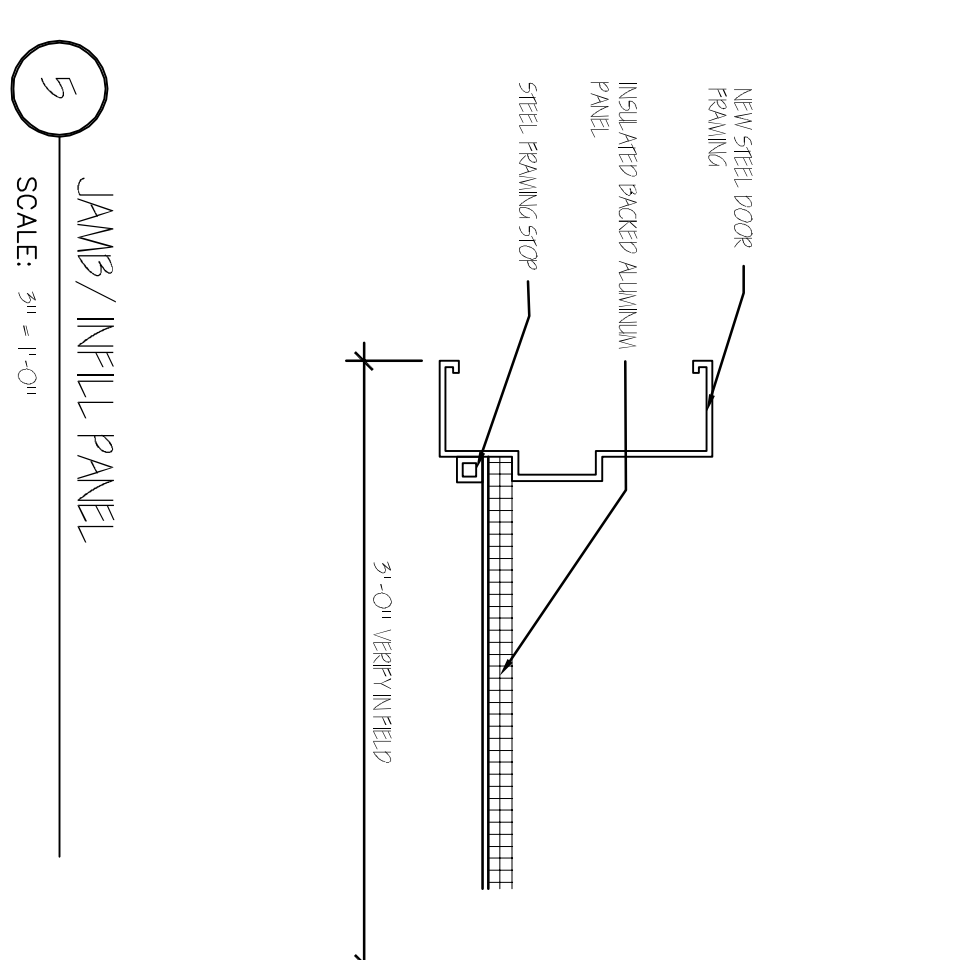
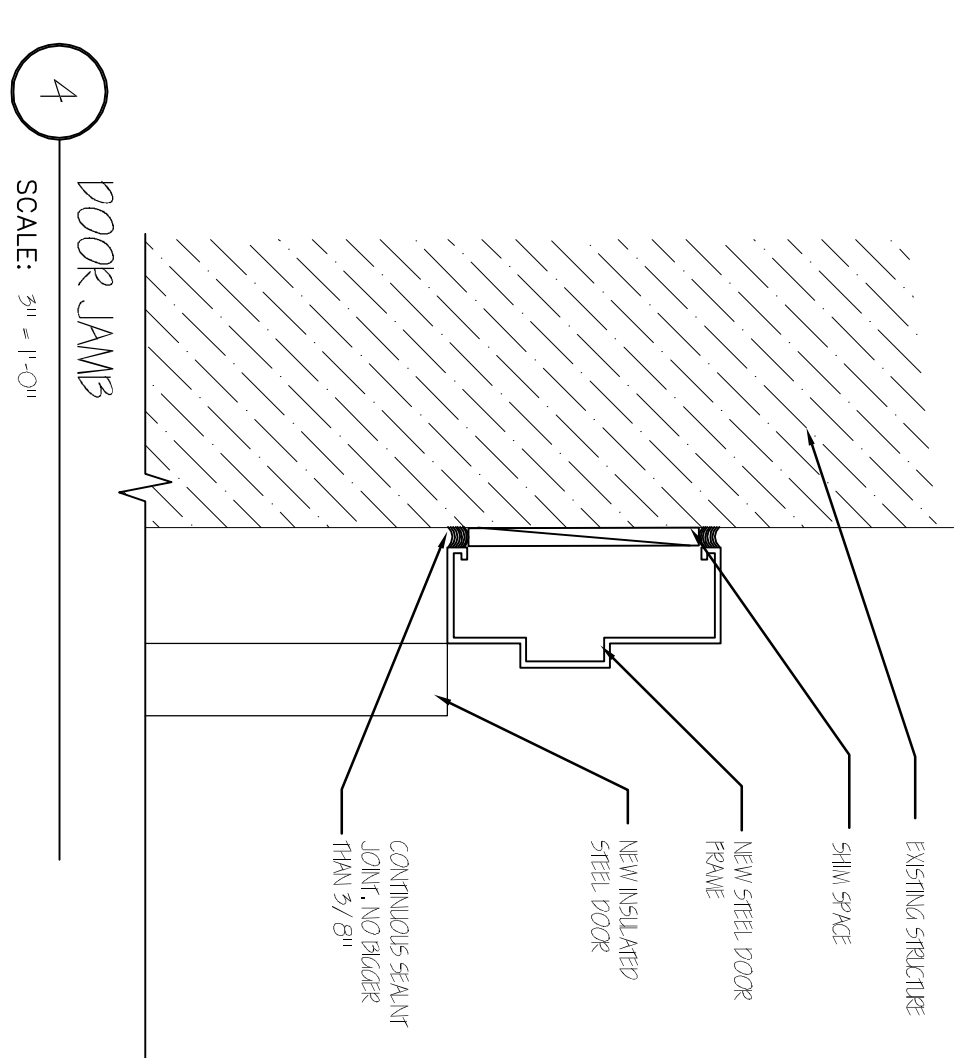
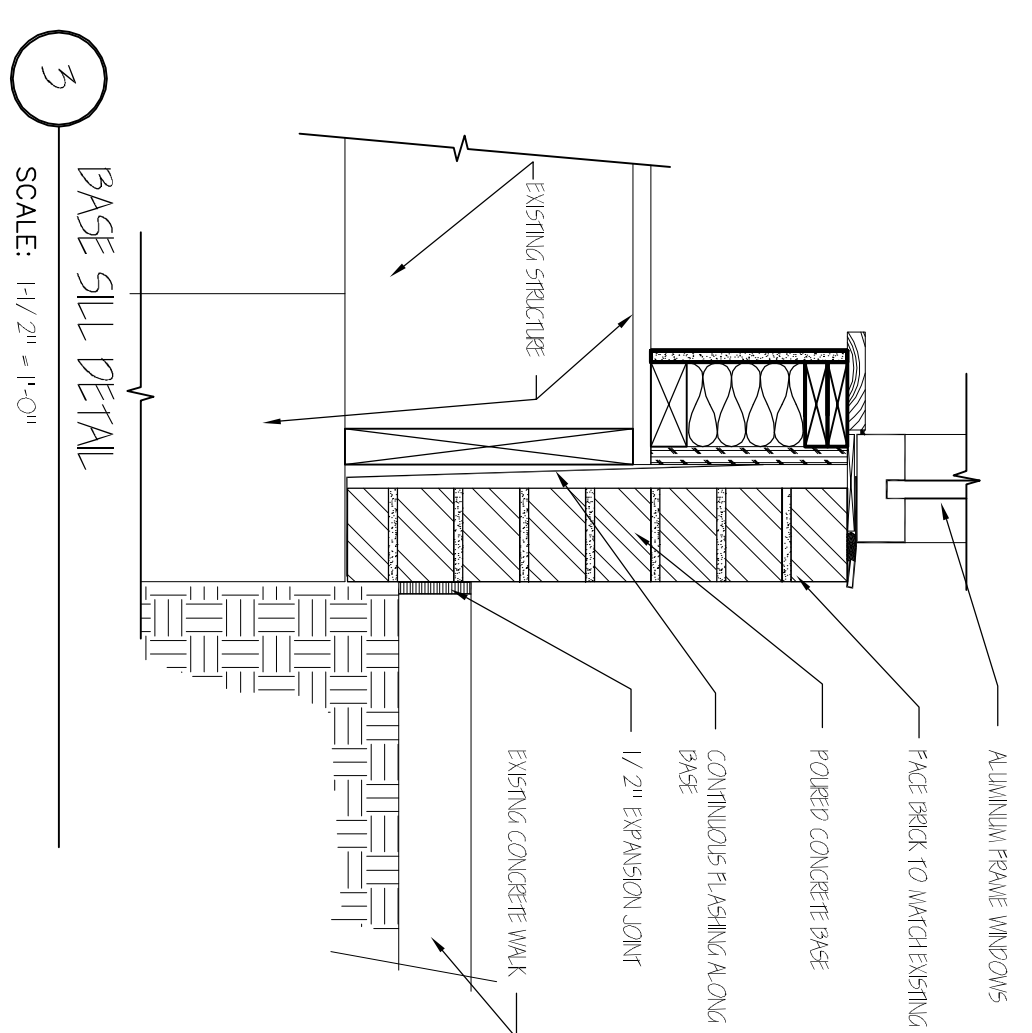
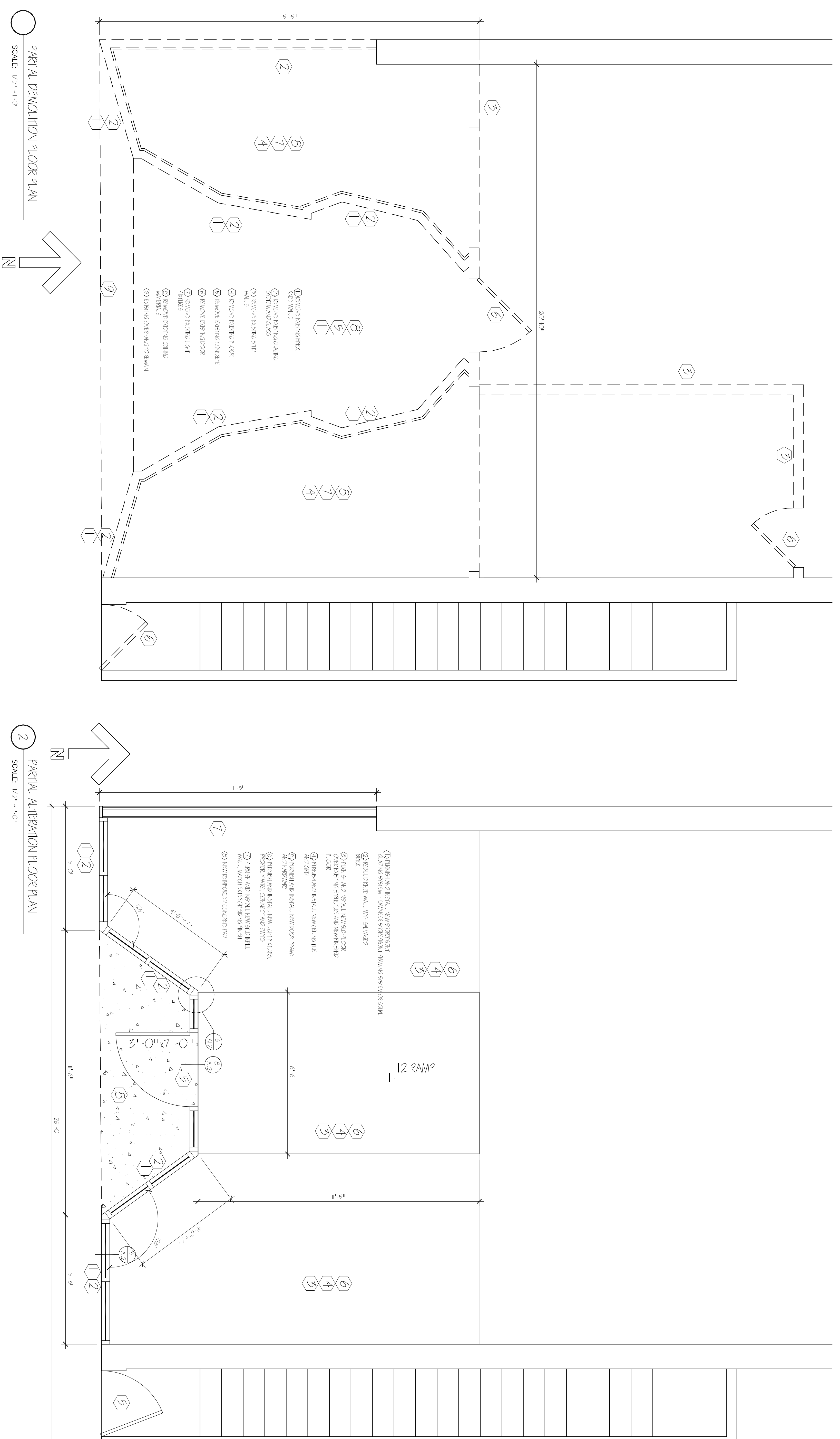
REVISIONS

PROJECT NO. 17014300
DATE 12/20/2017
DRAWN BY KJS
CHECKED BY KJS
SHEET CONTENTS
FLOOR PLAN AND DETAILS

SHEET

A1.2

2 OF 2



3

SCALE: 1/2" = 1'-0"

SCALE: 3/4" = 1'-0"

SCALE: 3/4" = 1'-0"

SCALE: 3/4" = 1'-0"

SCALE: 3/4" = 1'-0"

8

SCALE: 3/4" = 1'-0"

3

SCALE: 1/2" = 1'-0"

8

SCALE: 3/4" = 1'-0"