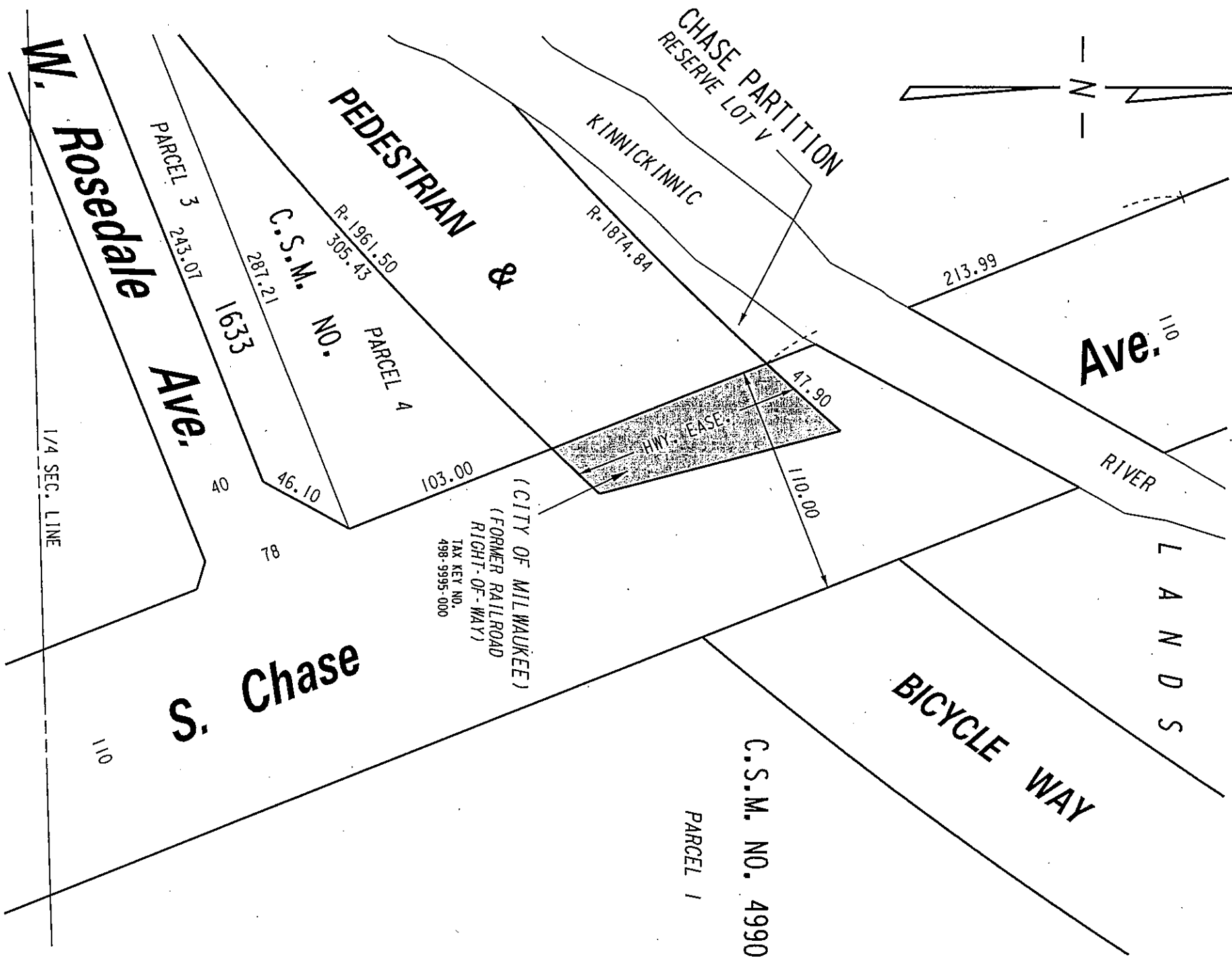
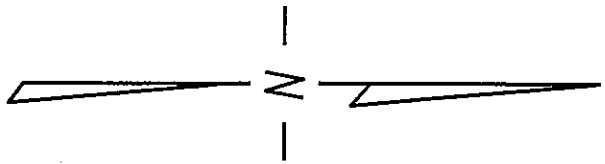


N.E. 1/4 SEC. 8, T.6N., R.22E.

498



CITY-OWNED LAND PROPOSED TO BE DEDICATED FOR PUBLIC STREET PURPOSES

FILE NO.

INFRASTRUCTURE SERVICES DIVISION

MILWAUKEE, WISCONSIN

ASSIGNED TO: W.E. FUCHS CH'K'D. BY: W.E. FUCHS
DRAWN BY: W.E.F. DATE: JAN. 21, 2014
PROJECT/GRANT NO.: WK52360073 SCALE: 1" = 60'
APPROVED BY:

Marcia Connell
CENTRAL DRAFTING & RECORDS MANAGER

[Signature]
CIVIL ENGINEER