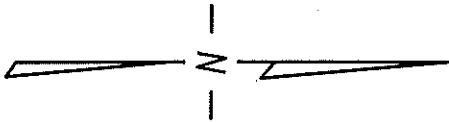


N.W. 1/4 SEC. 25, T.7N., R.21E.

387

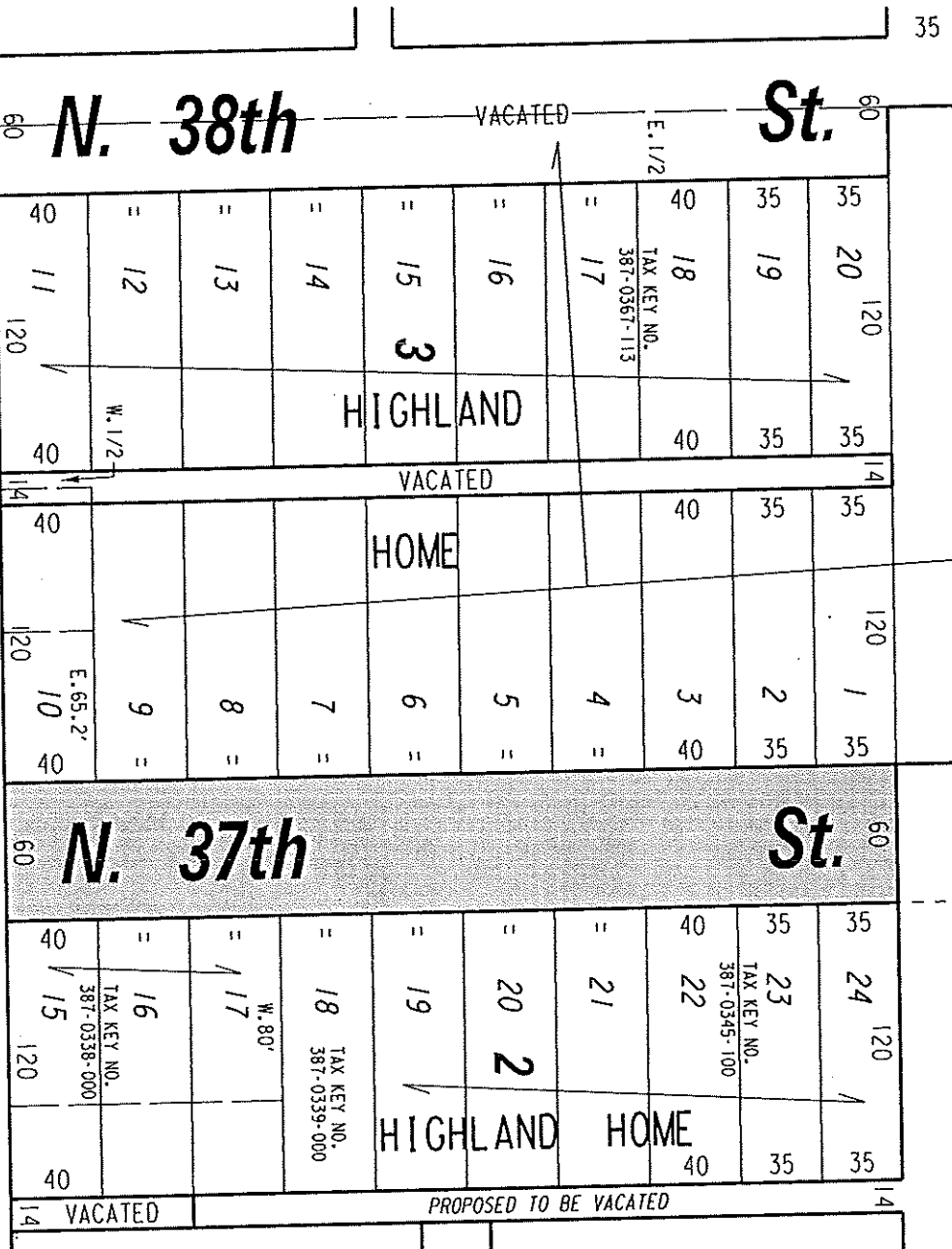


SEC. LINE

PROPOSED TO BE VACATED

LANDS

70' W. Juneau Ave.

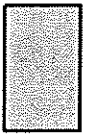


W. Highland

(126' R.O.W.)

Blvd.

TAX KEY NO.  
387-0360-000



PUBLIC STREET  
PROPOSED TO  
BE VACATED

EXHIBIT "A"

FILE NO. 140580

INFRASTRUCTURE SERVICES DIVISION

MILWAUKEE, WISCONSIN

ASSIGNED TO: W.E. FUCHS

DRAWN BY: W.E.F.

PROJECT/GRANT NO.: WK52337355

APPROVED BY:

CHK'D. BY: W.E. FUCHS

DATE: SEPT. 2, 2014

SCALE: 1" = 80'

CENTRAL DRAFTING & RECORDS MANAGER

CTM ENGINEER