

## 3516 West Center Street

Building Area: 99,318 SF (pre old Assessor records)

Four stories plus basement

Five building sections constructed between 1900 with additions in 1920, 1925 and 1930; nursing home remodeled in 1968

Land Area: 82,982 SF

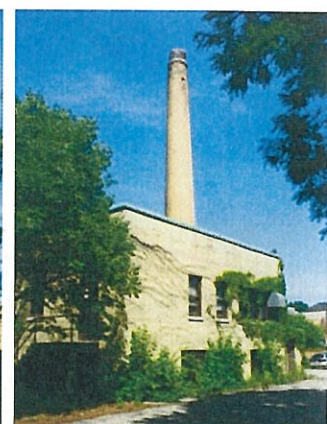
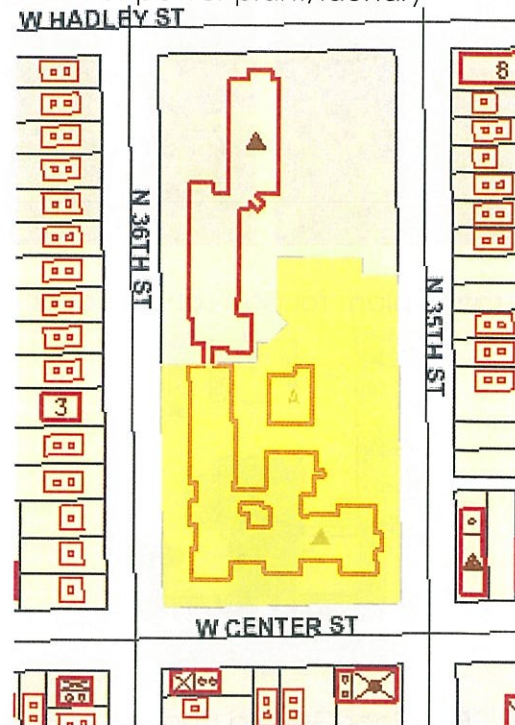
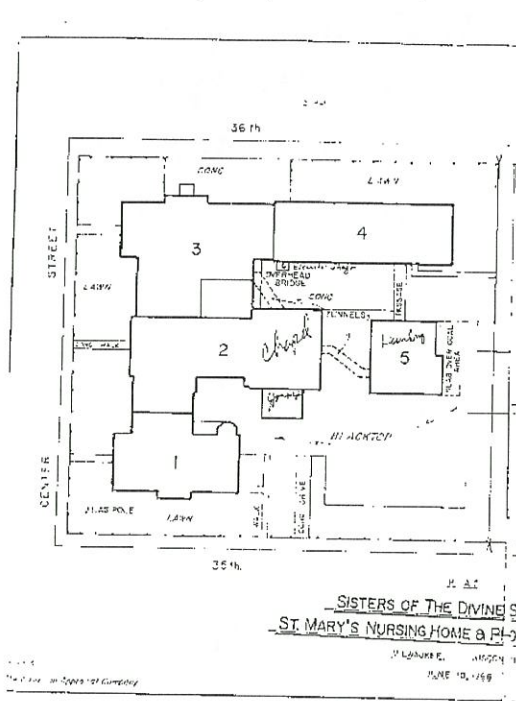
Shares access with adjoining senior housing building (Hadley Terrace)

Prior Use: Convent, nursing home and school

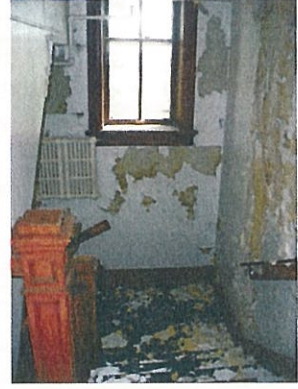
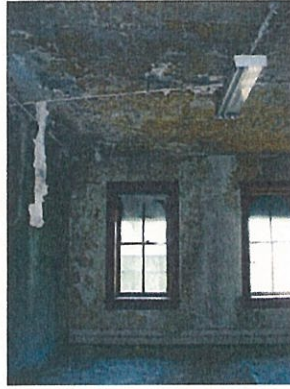
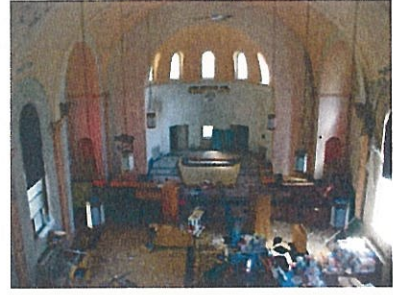
Condition: Severely vandalized

If rehabilitation possible, will take limited steps to prevent rain damage

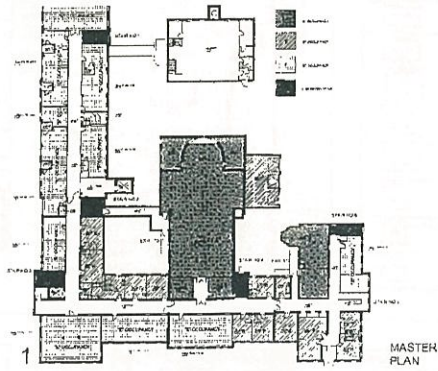
City may consider possible demolition of power plant/laundry



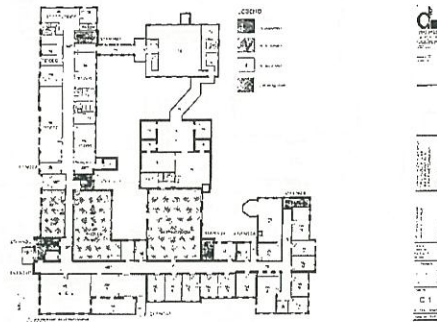




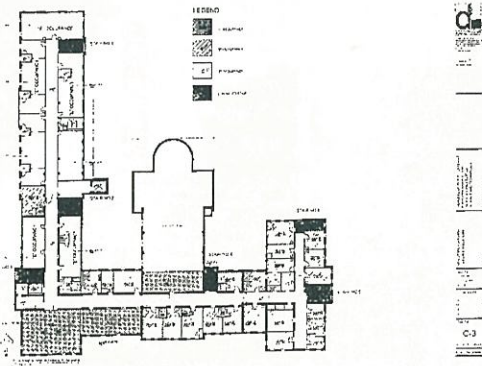
Operation plans for past school occupant – general idea of last layout



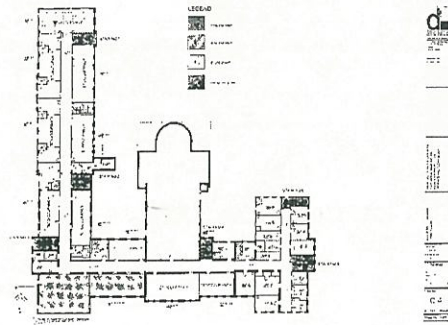
First Floor Ground Floor



Ground Floor



Second Floor



Third Floor