

Historic Preservation Commission Meeting February 14, 2012

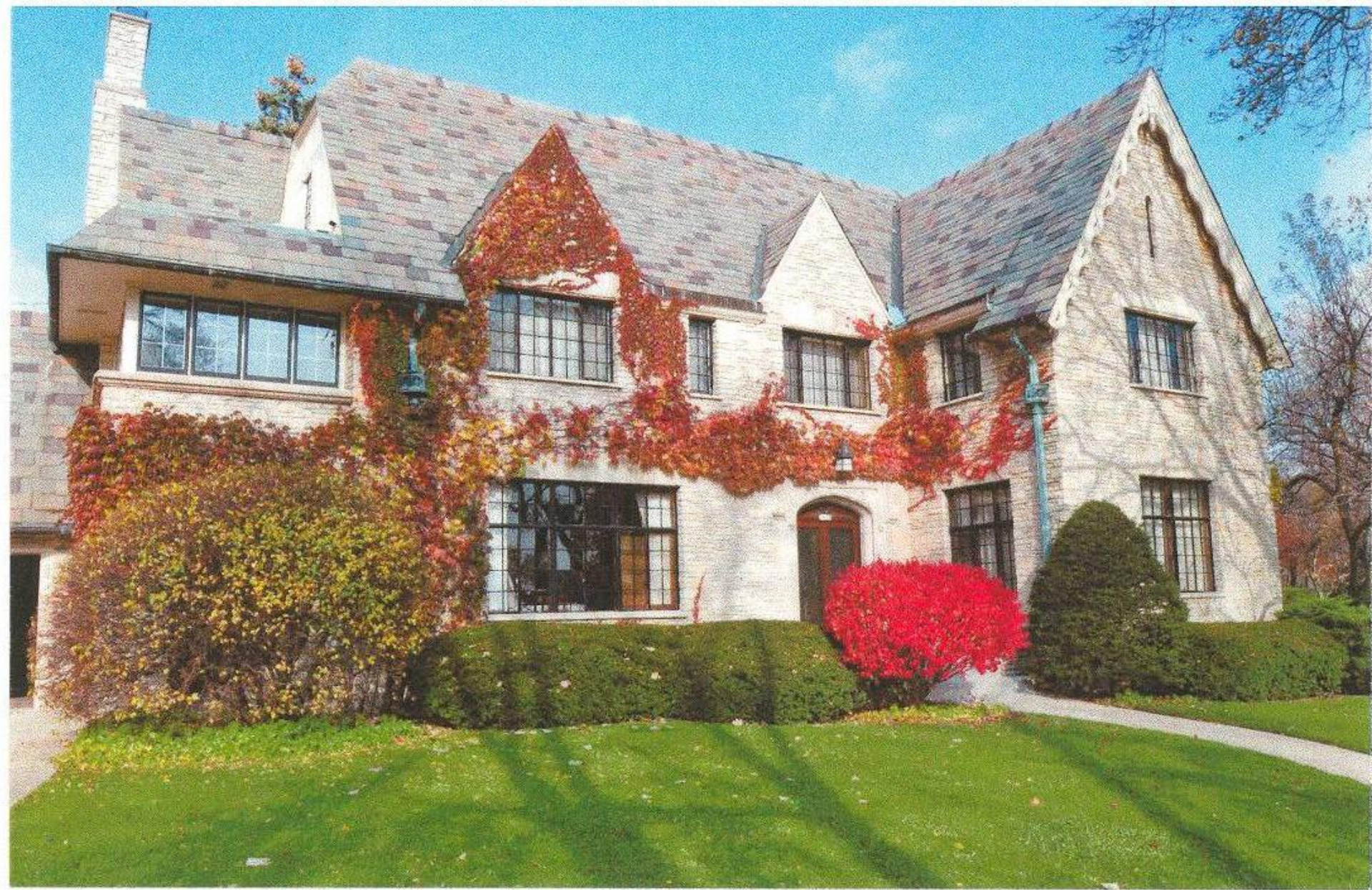


- Good Afternoon!
Please sign in at the door
- If you wish to speak on an issue or have your opinion noted by the commission, please fill out a form at the door and hand it to us

2635 N. Wahl Avenue.

*Landscape changes, seat
wall*

**North Point North Historic
District**

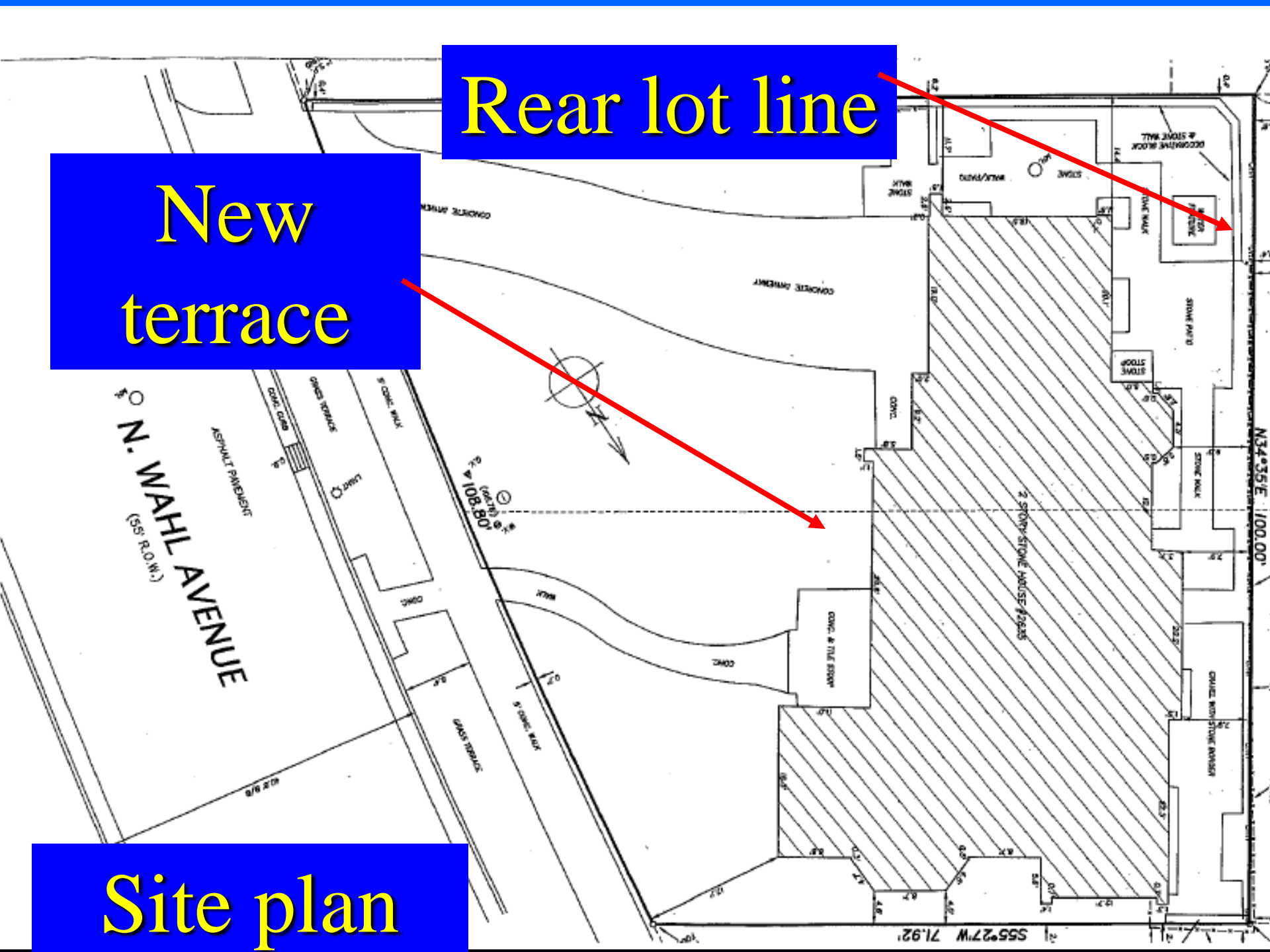


2635 N. Wahl Ave.

Rear lot line

New terrace

Site plan





Looking north at rear of house



New concrete drive with brick border



Extend existing
terrace



**Two basement
windows to be
in-filled**



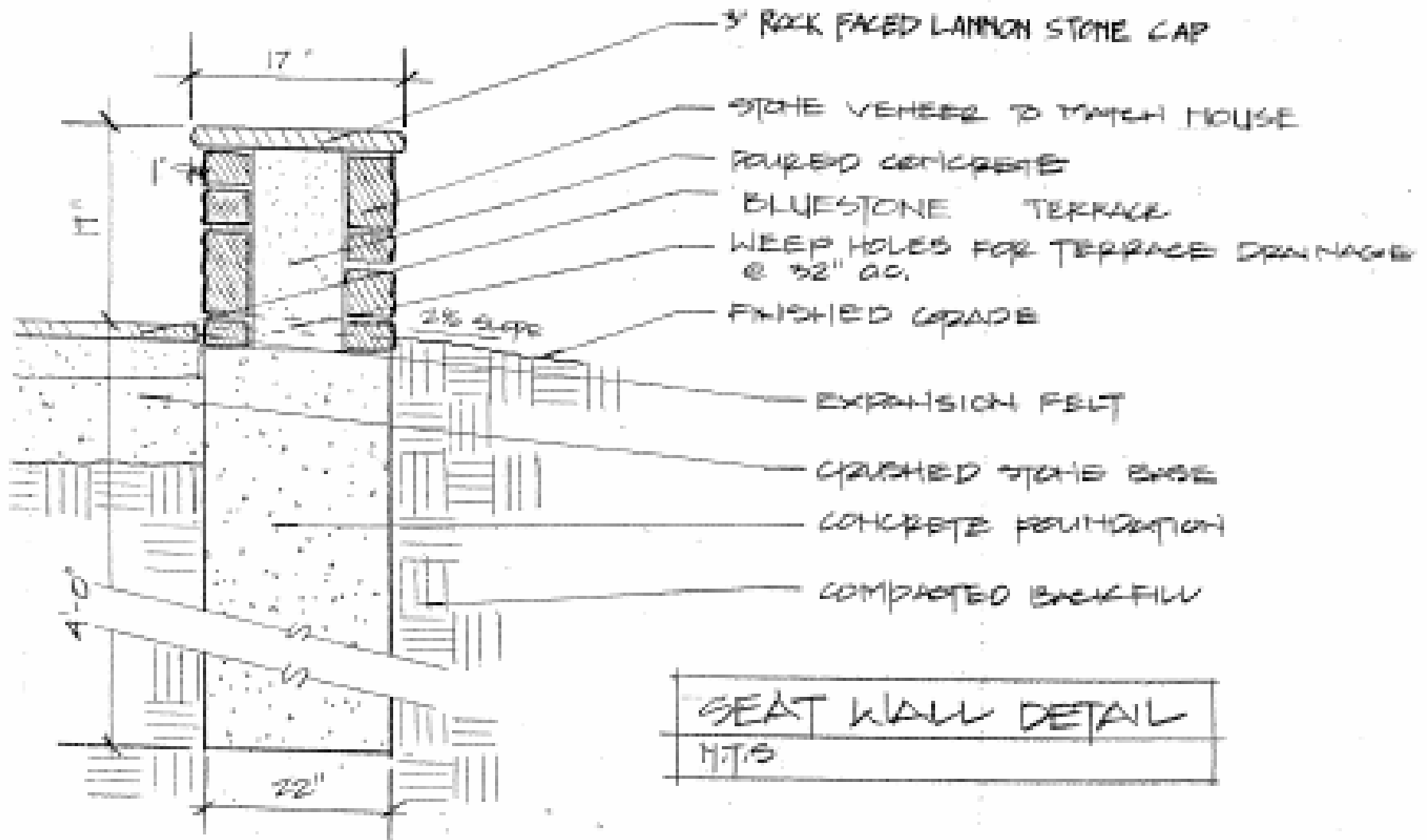
WALL ONLY 1/4" = 1'-0"
 EAST ELEVATION
 2635 N WAHL AVE

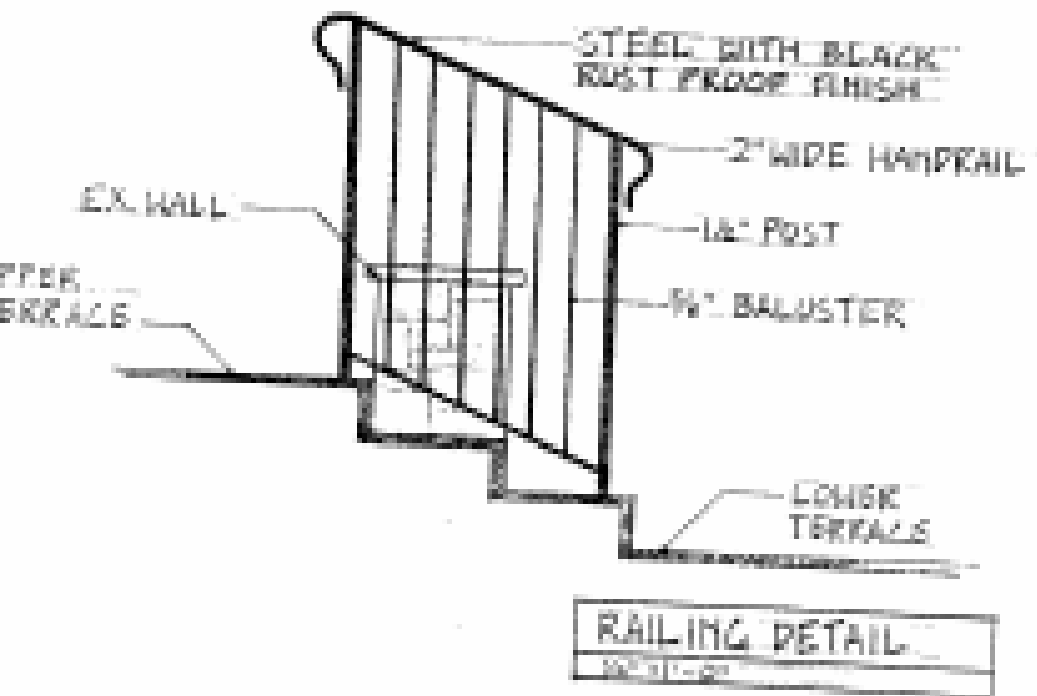
New seat wall



WALL + PLANTS $\frac{1}{8}" = 1'-0"$
EAST ELEVATION
2635 N WAHL AVE

Section thru seat wall





Wrought
steel
railing for
front steps