



Certificate of Appropriateness

Milwaukee Historic Preservation Commission/200 E. Wells Street/Milwaukee, WI 53202/phone 414-286-5712/fax 414-286-3004

Property

2505 E. BRADFORD Milwaukee Protestant Home for the Aged/Eastcastle Place

Description of work

The former Milwaukee Protestant Home for the Aged was constructed in 1892 with various new wings added over the decades. The current project is taking place in a wing that was constructed after World War II and faces west toward Prospect Avenue. The building is contemporary in design and materials.

Patient rooms and lounge areas on the fourth and fifth floors will be remodeled and window replacement will take place in these areas. The current windows have narrow operable sash with large fixed sash. For patient safety and better climate control, the new windows will all have fixed sash and equal sized panes. The windows will be framed in bronze anodized metal as are the originals. Eventually, as more floors are remodeled, additional windows will be replaced so all will match.

Date issued

5/25/2016

PTS ID 110955 COA Window Replacement

In accordance with the provisions of Section 320-21 (11) and (12) of the Milwaukee Code of Ordinances, the Milwaukee Historic Preservation Commission has issued a certificate of appropriateness for the work listed above. The work was found to be consistent with preservation guidelines. The following conditions apply to this certificate of appropriateness:

All work to be carried out per application.

All work must be done in a craftsman-like manner, and must be completed within one year of the date this certificate was issued. Staff must approve any changes or additions to this certificate before work begins. Work that is not completed in accordance with this certificate may be subject to correction orders or citations. If you require technical assistance, please contact Carlen Hatala of the Historic Preservation staff as follows: Phone: (414) 286-5722 Fax: (414) 286-3004 E-mail: carlen.hatala@milwaukee.gov.

If permits are required, you are responsible for obtaining them from the Milwaukee Development Center. If you have questions about permit requirements, please consult the Development Center's web site, www.milwaukee.gov/build, or call (414) 286-8210.

A handwritten signature in black ink, appearing to read "Carl Hatal". The signature is written in a cursive style with a diagonal slash between the first and last names.

City of Milwaukee Historic Preservation Staff

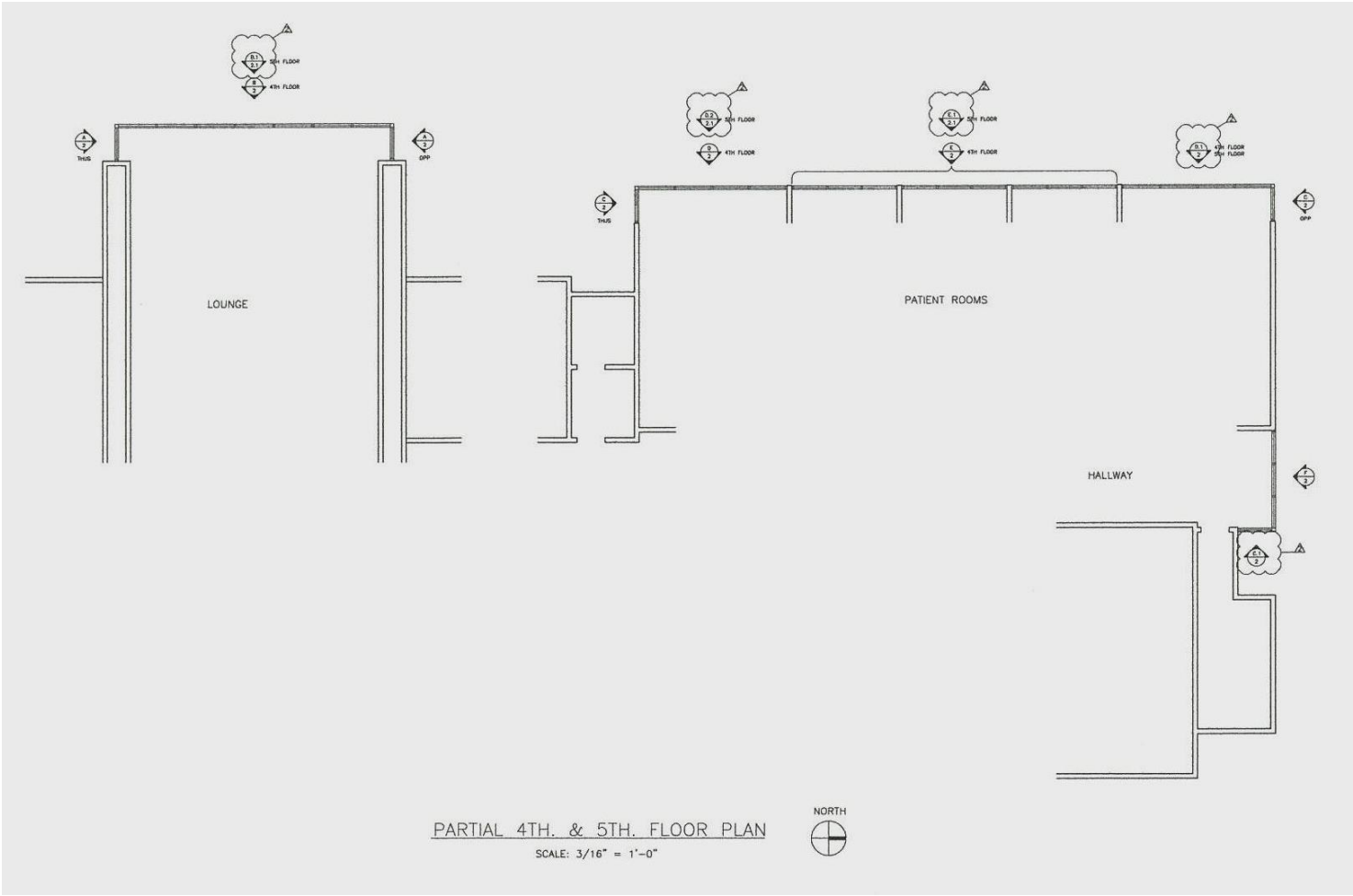
Copies to: Development Center, Ald. Nik Kovac, Contractor, Inspector Paul Wolfgramm (286-2590)

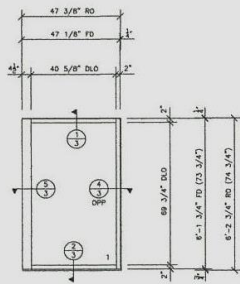


New windows will go here.

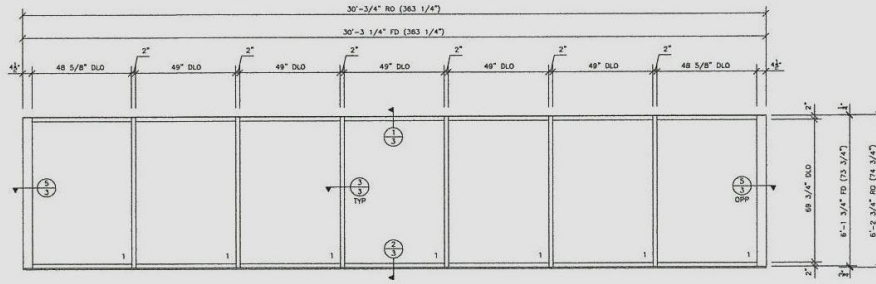


Current blank panels will remain between the window openings.

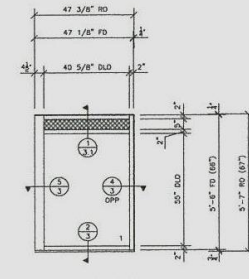




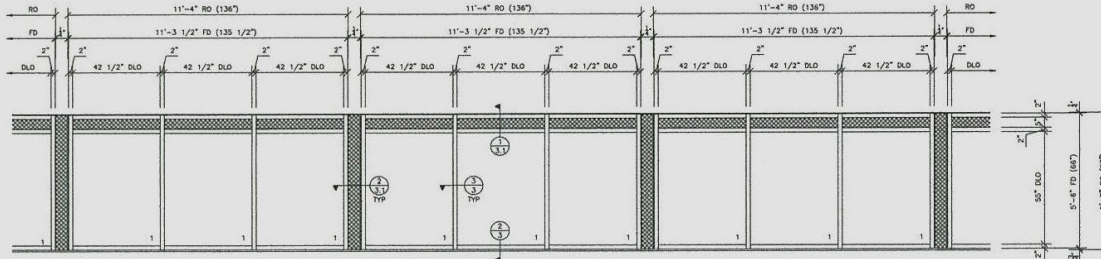
A 4 REQ'D
 2- THIS, 1 @ 4TH FLOOR, 1 @ 5TH FLOOR
 2- OPP, 1 @ 4TH FLOOR, 1 @ 5TH FLOOR



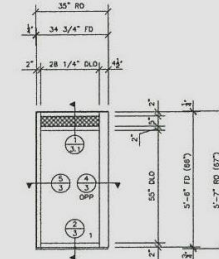
B 1 REQ'D
 1- THIS, @ 4TH FLOOR



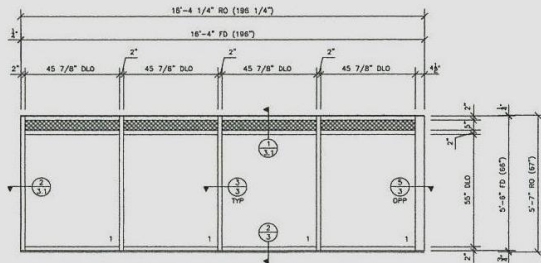
C 4 REQ'D
 2- THIS, 1 @ 4TH FLOOR, 1 @ 5TH FLOOR
 2- OPP, 1 @ 4TH FLOOR, 1 @ 5TH FLOOR



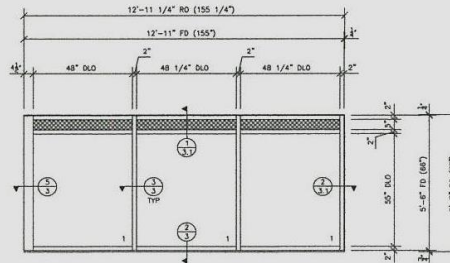
E 1 REQ'D
 1- THIS @ 4TH FLOOR



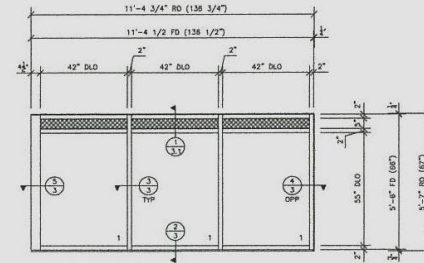
C.1 2 REQ'D
 1 @ 4TH FLOOR
 1 @ 5TH FLOOR



D 1 REQ'D
 1- THIS @ 4TH FLOOR

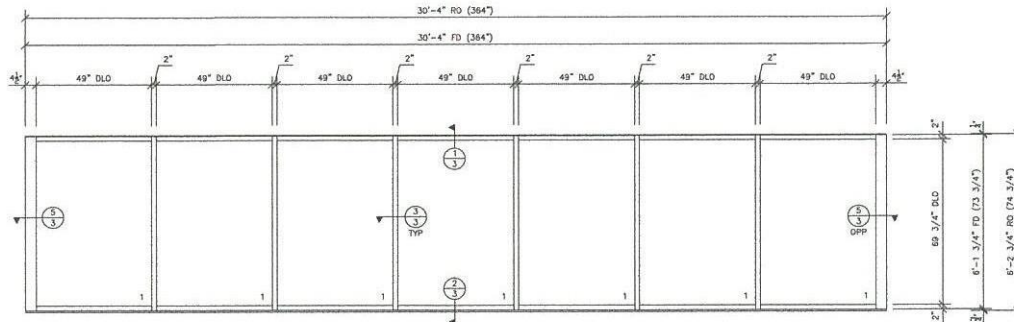


D.1 2 REQ'D
 1 @ 4TH FLOOR
 1 @ 5TH FLOOR

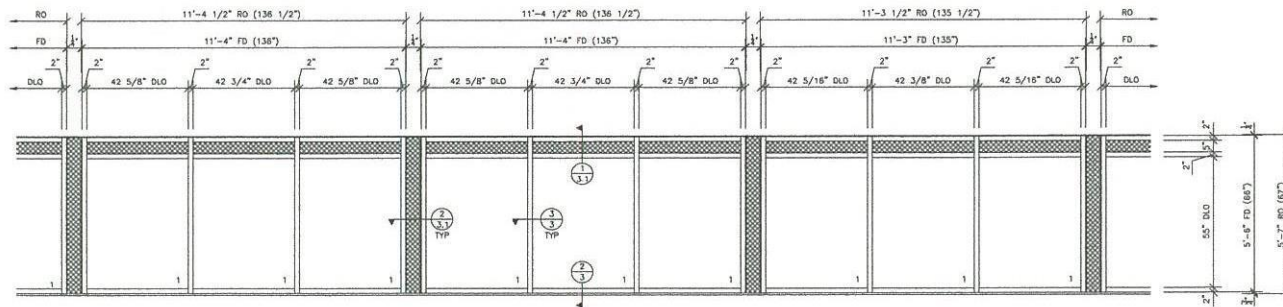


F 2 REQ'D
 1 @ 4TH FLOOR
 1 @ 5TH FLOOR

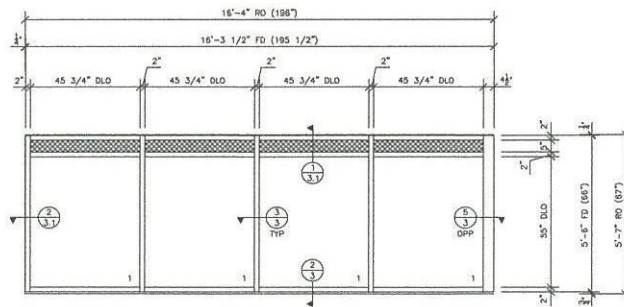
REVISED ENTIRE SHEET



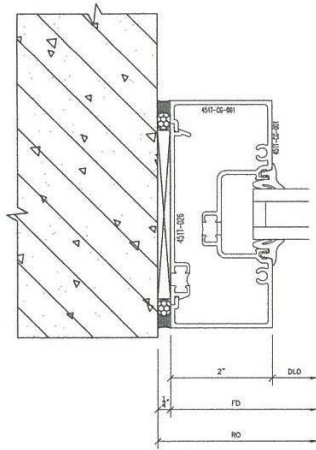
B.1 1 REQ'D
2.1 1 @ 5TH. FLOOR



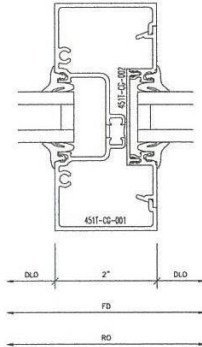
E.1 1 REQ'D
2.1 1 @ 5TH. FLOOR



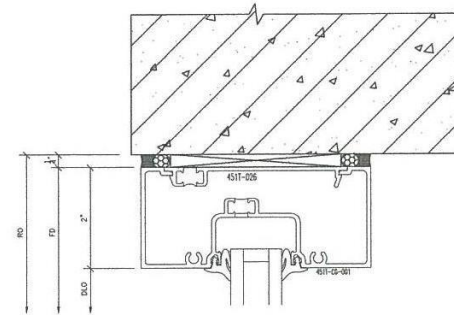
D.2 1 REQ'D
2.1 1- THUS @ 5TH. FLOOR



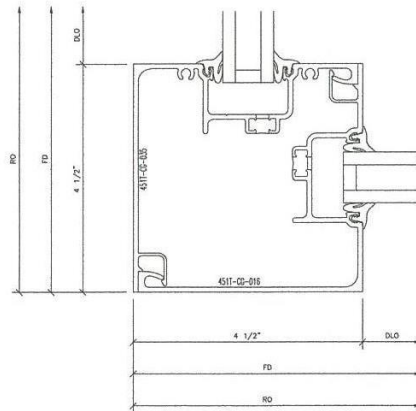
4
3 JAMB



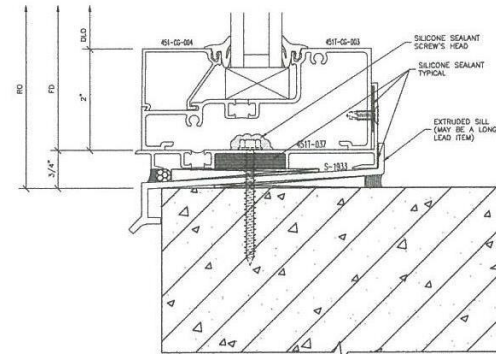
3
3 INT. MULLION
VERTICAL



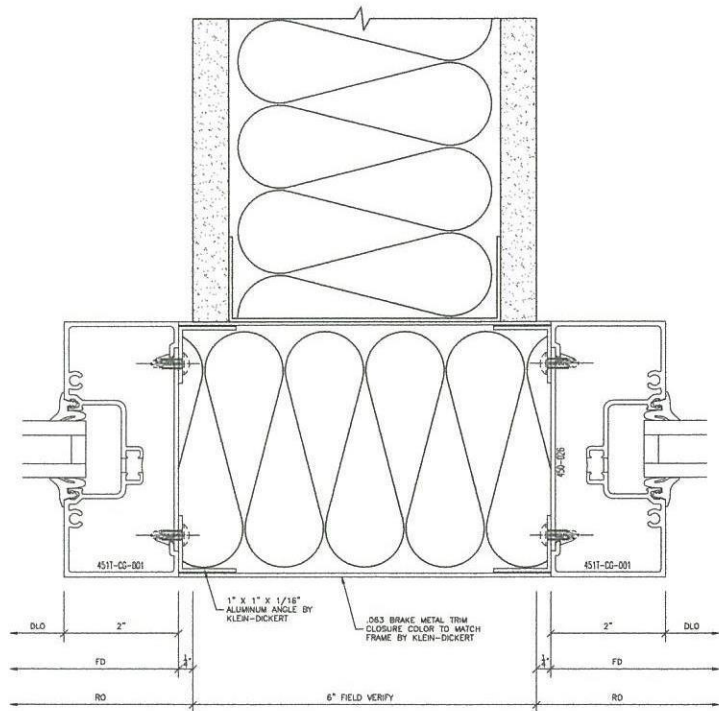
1
3 HEAD



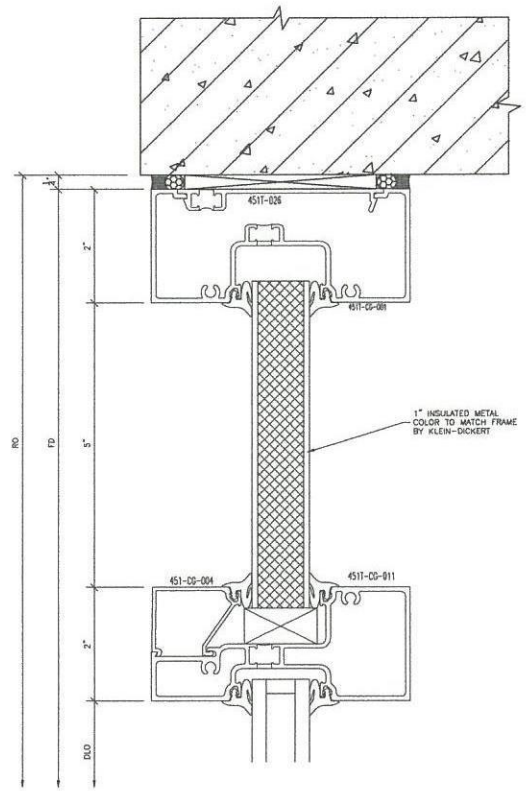
5
3 90° OUTSIDE CORNER



2
3 SILL



2 INT. MULLION
3.1 VERTICAL



1 HEAD
3.1