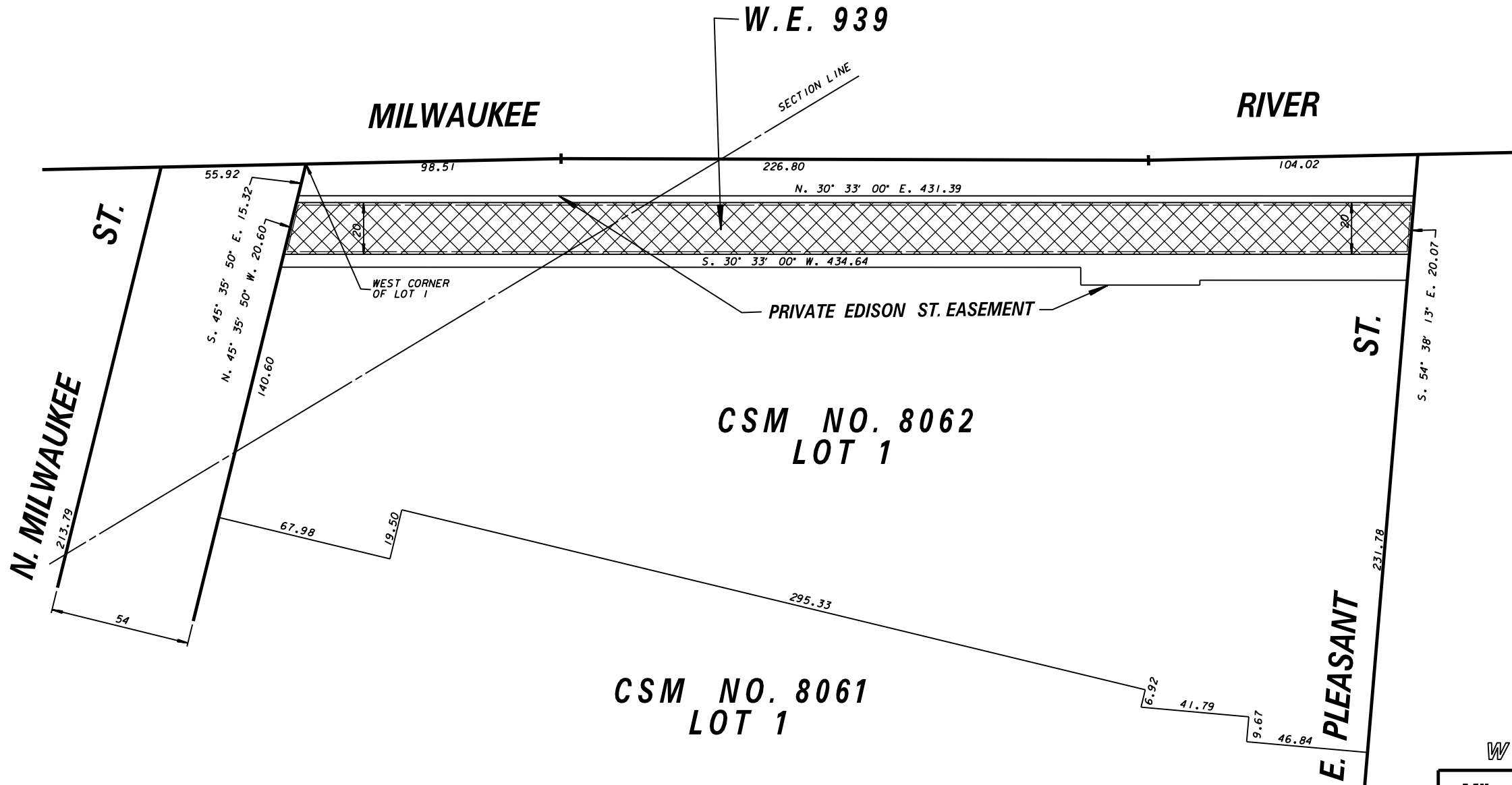


SE. 1/4 OF SEC. 20 AND SW. 1/4 OF SEC. 21, T. 7 N., R. 22 E.



WATER EASEMENT W.E. 939

Milwaukee Water Works		Water Engineering	
		Department of Public Works Milwaukee, Wisconsin	
WATER EASEMENT			
IN		C.S.M. NO. 8062, LOT 1	
AT		EDISON ST. (PRIVATE)	
FROM		N. MILWAUKEE ST.	
TO		E. PLEASANT ST.	
SCALE	1" = 50'	APPROVED	DATE
1/4 SEC. NO.	360, 361	<i>McJ. Hall</i>	3-8-12
PLAN DATE	7-25-11		MAINS DESIGN ENGINEER
DRAWN BY	P.W.P.	<i>Luca A. Sant</i>	3-8-12
CHECKED BY			CHIEF DESIGN ENGINEER
REVIEWED BY		<i>Cullenis</i>	3-8-12
WORK ORDER	TD04884050		SPECIAL DEPUTY COMMISSIONER OF PUBLIC WORKS