

4  
S.E. 17-7-22  
ATLAS P. 322

322

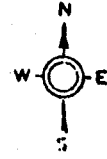
JOHN B A KERN'S SUBD

322-16

W. Center

'119 '113

St.



2676 2674	150 -0112-100 40 26.25	20 26.25	1 1 (V50) -0081	2675
2670-2	322-0111-211 39	30	2 2 0080	
St. 2664	322-0111-211 38	30	3 3 -0082 61 09	2664-71
	-0111-100 37	30	4 4	St.
2652-4	36	30	5 5 -0084-100	2659-61
2648-50	-0109-100 34	20	6 6 -0085	2655-7
	-0108 33	30	7 7	2649-61
2642-4	32	30	8 8 -0086	2643-5
2636-8	-0107 31	30	9 9 -0087	2637-41
2632-4	-0106 30	30	10 10 -0088	2633
	-0105-100-1 29	30	11 11	2625-7
2622-4	28	30	12 12 -0089	2621-3
2618-20	-0103-110-8 27	30	13 13 -0090	2617-1
2614-16	-0102 26	30	14 14	2609
	-0101 25	30	15 15 -0091	2605
	24	30	16 16 -0092-100	
	23	30	17 17	
	-0098-110 22	30	18 18 -0097 -0095	
2600	21	30	19 19 -0096	
	150	20	20 20	

W. Clarke

St.

MICROFILM

GARFIELD HEIGHTS

PAGE 349-02 ADJ.



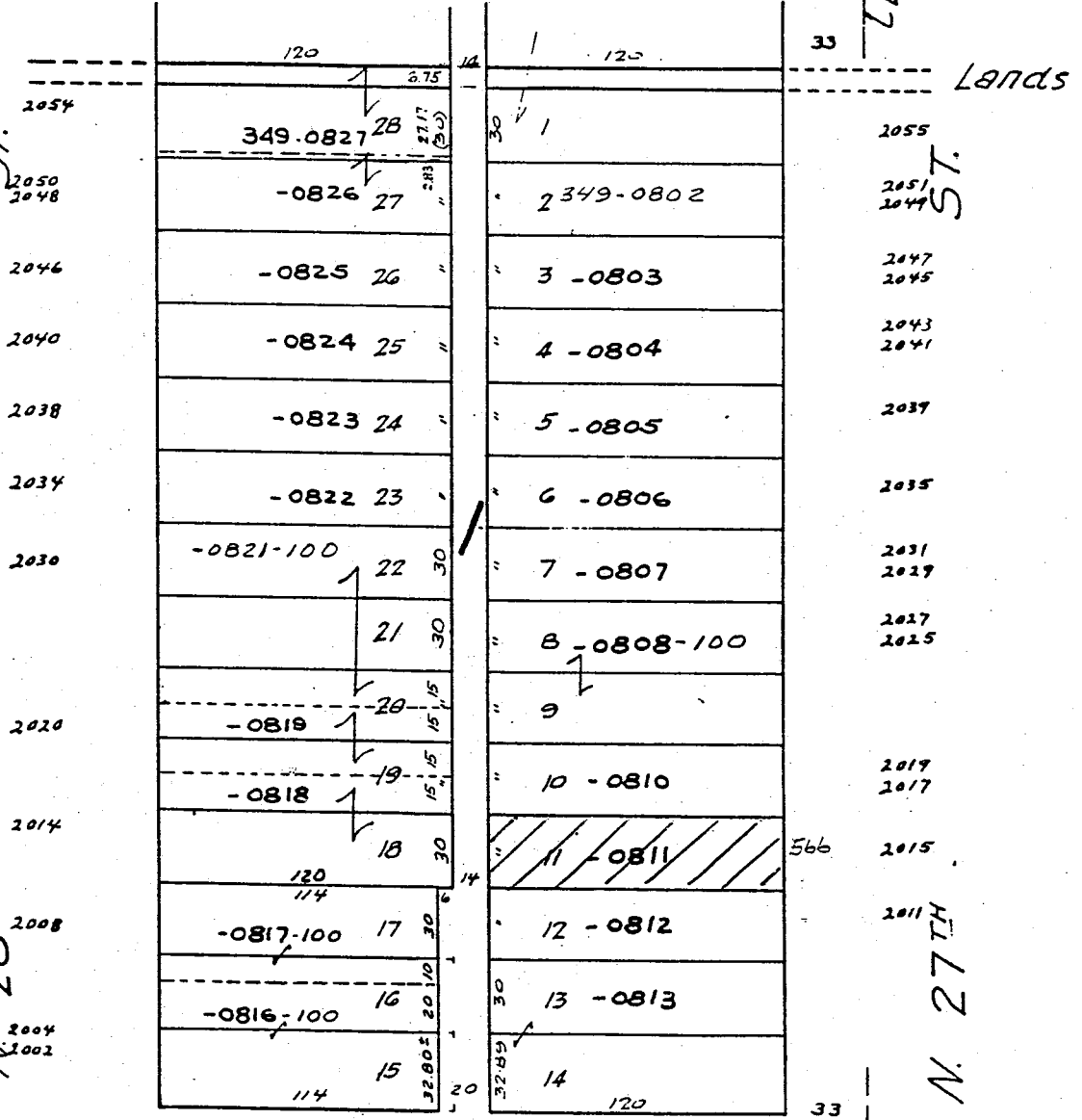
1/4 SEC

ST.

ST.

N 28<sup>TH</sup>

N. 27<sup>TH</sup>



W. BROWN

2712

ST.

1/4 SEC

SE. 12-7-21  
ATLAS P. 286

Vol. 17 Page 17  
FOREST PARK  
W. CONCORDIA  
286

Vol. 21 Page 18  
Warner Bros. & Wamboldt's Subd. No. 2  
AVE.

286-08



3294	35.87	32.70	15	120	3295
3292	286-0722	1	1	286-1042	3289
3288	-0723	2	2	-1043	3285
3286		3	3	-1044	3281
3284	-0724	4	4	-1045	3275
3282		5	5	-1046	3269
3278	-0725	6	6	-1047	3265
3276		7	7	-1048	3261
3272	-0726	8	8	-1049	3257
3270	-0727	9	9	-1050	3255
3264	-0728	10	10	-1051	3249
3262	-0729	11	11	-1052	3247
3256	-0730	12	12	-1053	3241
3254	-0731	13	13	-1054	3237
3248	-0732	14	14	-1055	3235
3244	-0733	15	15	-1056	3229-254
3240	-0734	16	16	-1057	3225
3236	-0735-100	17	17	-1058	3221
3234	-0736	18	18	-1059	3215
3232		19	19	-1060	3213
3230	-0737	20	20	-1061	3209
3228		21	21	-1062	3205
3224	-0738	22	22	-1063	3203
3220	-0739	23	23		
3216	-0740	24	24		
3212	-0741	25	25		
3208	-0742				
3202-024	286-0743				

ST

ST

N 30 TH

N 29 TH

MICROFILMED 2-7-67

2918  
2919  
W. AUER Ave.

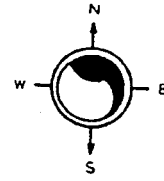
NE 24-7-21

ATLAS P. 349

349

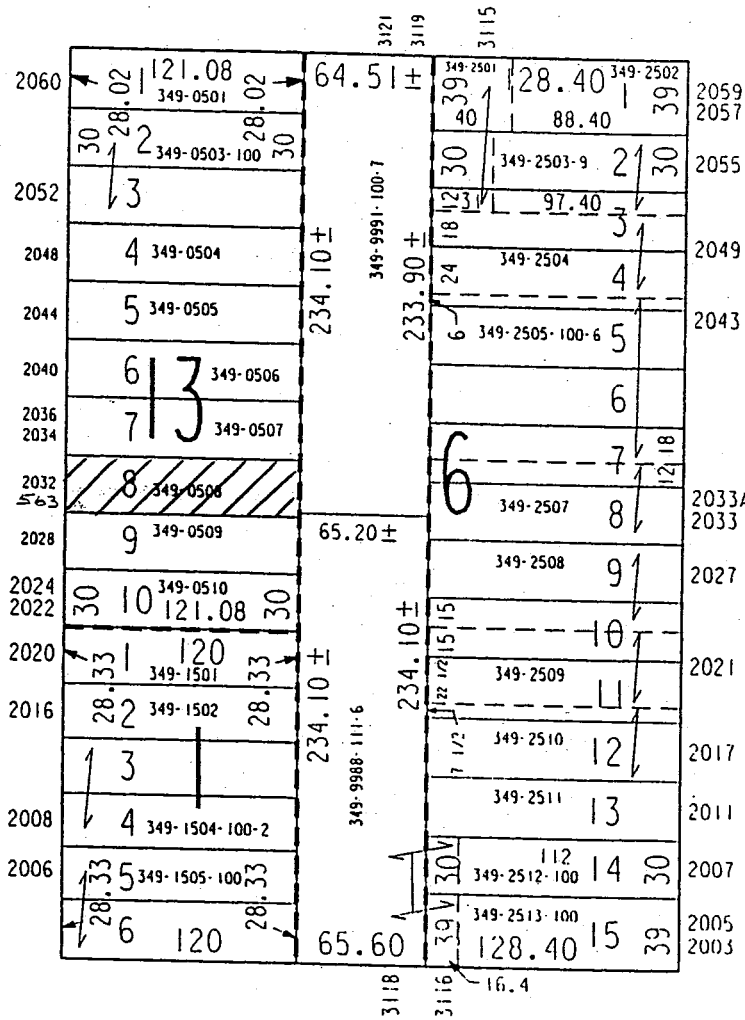
349-30

SCALE 1" = 80'



LANDS

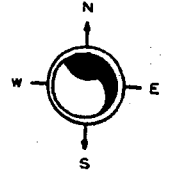
W LLOYD ST



MALLORY & KERN'S ADDITION OF MALLORY & KERN'S ADDITION  
 N 32ND ST

N 31ST ST  
 YOUNG MEN'S LOAN & INVESTMENT ASSOCIATION SUBDIVISION NO. 2

W BROWN ST



PRUSSIAN HEIGHTS

W CLARKE ST

N 35TH ST

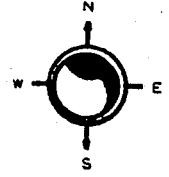
N 34TH ST

2576	33	40	120	33	14	33	120	11	33	2575
			326-1515				326-1477-100-2			2573
2572	30	39	326-1514	30		30		2	30	
2568		38	326-1513				326-1478 3			2571
2564		37	326-1512				326-1479 4			2565A 2565
2560		36	326-1511				326-1480 5			2563 2561
2556		35	326-1510				326-1481 6			2557
2554		34	326-1509				326-1482 7			2555 2553
2552										2551
2550		33	326-1508				326-1483 8			2549
2548										2547
2546		32	326-1507				326-1484 9			2545
2544										
2542		31	326-1506				326-1485 10			2541
2536		30	326-1505		4		326-1486 11			2537
2532		29	326-1504					12	1	2533
2528		28					326-1487-100-1	13	1	
			326-1503-100-2							
		27					326-1489 14			2527
2520		26	326-1501				326-1490 15			2521
2516		25	326-1500				<del>326-1491 16</del>			2519 277 2517
2512		24	326-1499				326-1492 17			2515
2508		23	326-1498					18	1	
							326-1493-100-X			2511
		22						19	1	
			326-1496-100-6							
2500	30	21	120	30	14	30	326-1495	20	30	2501

3404

W WRIGHT ST

WESTERN AVENUE PARK  
 W CLARKE ST



N 36TH ST

N 35TH ST

	3533 29.73		3529		3519 29.82	
	28	121.50	28	18	121.50	2579
	327-1662 31.5	327-1663 45	327-1664 45	6	327-1658-100-5 29.84	2577
2566	28	5	327-1661	28	327-1660-100-4	2567
2562	30	40	327-0362	30	327-0330	2565 2563
2558		39	327-0361		327-0331	2559
2554		38	327-0360		327-0332	2555A 2555
2550		37	327-0359		327-0333	2553
2546		36	327-0358		327-0334	2549 2547
2542		35	327-0357	6	327-0335-100-9	2543
2538		34	327-0356			15
2536 2534		33	327-0355		327-0338-120-x	16
2530		32	327-0354-100-2		327-0338-110-2	17
		31			327-0339	18
2522		30	327-0352		327-0340	19
2520 2518		29	327-0351		327-0341	20
2514		28	327-0350		327-0342	21
2510		27	327-0349		327-0343	22
2506	30	26	327-0348	30	327-0346-100-9	23
2502 2500	39.2	25	97 327-0347 121.50	18	327-0344 121.50	24
				3514		3504

W WRIGHT ST

CONTINUATION OF  
 WESTERN AVENUE PARK

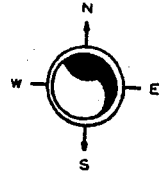
SE 13-7-21

ATLAS P. 326

326

326-32

SCALE 1" = 80'



PRUSSIAN HEIGHTS

W CLARKE ST

N 35TH ST

N 34TH ST

2576	33	40	120	326-1515	33	14	33	120	326-1477-100-2	33	2575
2572	30	39	326-1514	30			2	30		30	2573
2568		38	326-1513						326-1478 3		2571
2564		37	326-1512						326-1479 4	2565A	2565
2560		36	326-1511						326-1480 5	2563	2561
2556		35	326-1510						326-1481 6		2557
2554		34	326-1509						326-1482 7	2555	2553
2552		33	326-1508						326-1483 8	2551	2549
2550		33	326-1508						326-1483 8	2549	2547
2548									326-1484 9	2547	2545
2546	278								326-1485 10	2547	2545
2544									326-1485 10	2547	2545
2542		31	326-1506						326-1485 10		2541
2536		30	326-1505			4			326-1486 11		2537
2532		29	326-1504						12		2533
2528		28							326-1487-100-1		2533
		27	326-1503-100-2						13		2527
2520		26	326-1501						326-1489 14		2521
2516		25	326-1500						326-1490 15		2519
2512		24	326-1499						326-1491 16		2517
2508		23	326-1498						326-1492 17		2515
		22							326-1493-100-x	18	2511
		21	326-1496-100-6						19		2511
2500	30	21	120	30	14				326-1495	20	2501

3404

W WRIGHT ST

Zingen & Braun's SUBD.  
2nd SUBD.

Forster's SUBD.

W. Locust

St.



2876	308-1149 33	15	3515	3509	2877
2874	-1148 32	14	126	G13634	308-00367
2870	-1147 31	13	126	G13637	44
2868	-1146 30	12	G13639	-0039	2871-3
2866	-1145 29	11	G13640	-0040	2867-9
2860	-1144 28	10	G13641	-0041	2861-3
2856	-1144 28	9	G13642	-0042	2857-9
2852	-1143 27	8	G13643	-0043	2851-3
2848	-1142 26	7	G13644	-0044	2845-7
2842	-1141 25	6	G13645	-0045	2839-11
2838	-1140 24	5	G13646	-0046	2835-7
2834	-1139 23	4	G13647	-0047	2829-31
2828	-1138 22	3	G13648	-0048	2825-7
2824	-1137 21	2	G13649	-0049	2821-3
2820	-1136 20	1	G13650	-0050	2817-9
2816	-1135 19	12	G13651	-0051	2813-5
2810	-1134 18	11	G13652	-0052	2809
2806	-1133 17	10	G13653	308-0053	2803-5
2800	308-1132 16	9	126		

St.

057

N. 36th

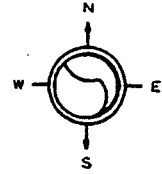
W. Hadley

St.

N. 35th

RECORDED



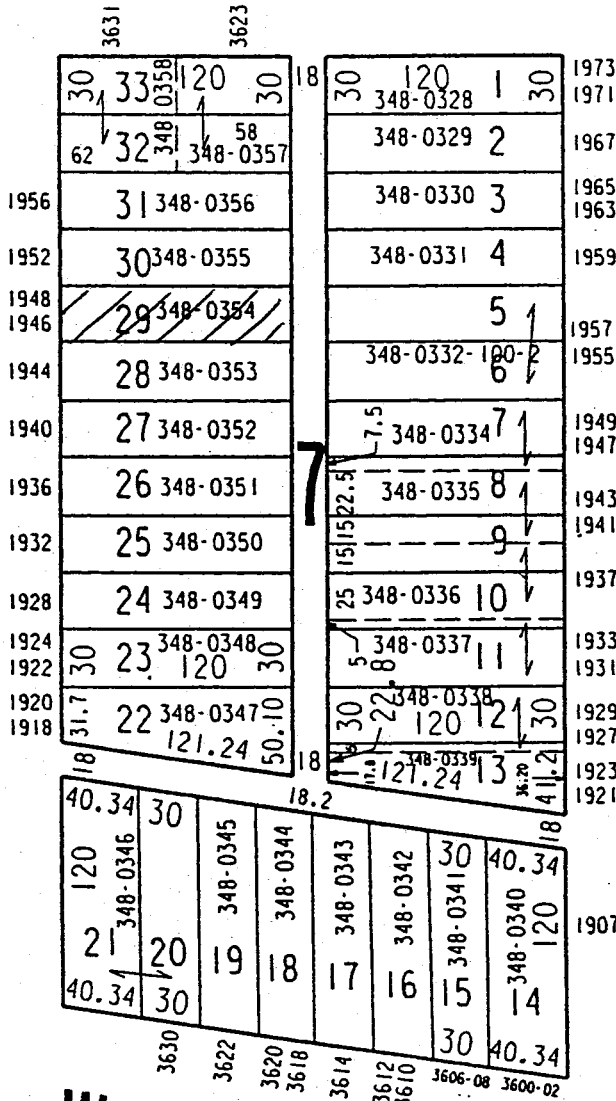


# GRAND VIEW PARK

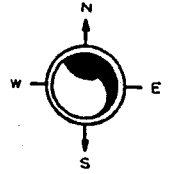
## W BROWN ST

N 37TH ST

N 36TH ST



## W LISBON AV



JACOB TRUSS'  
SUBDIVISION

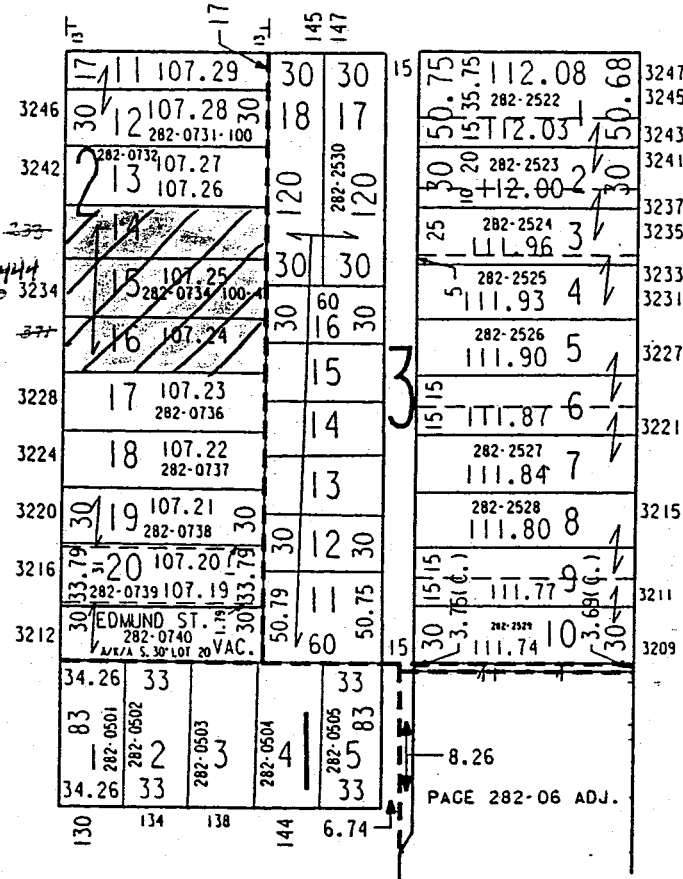
E RING ST

BURKE & OGDEN'S  
SUBDIVISION

N ACHILLES ST

N PALMER ST

LANDS



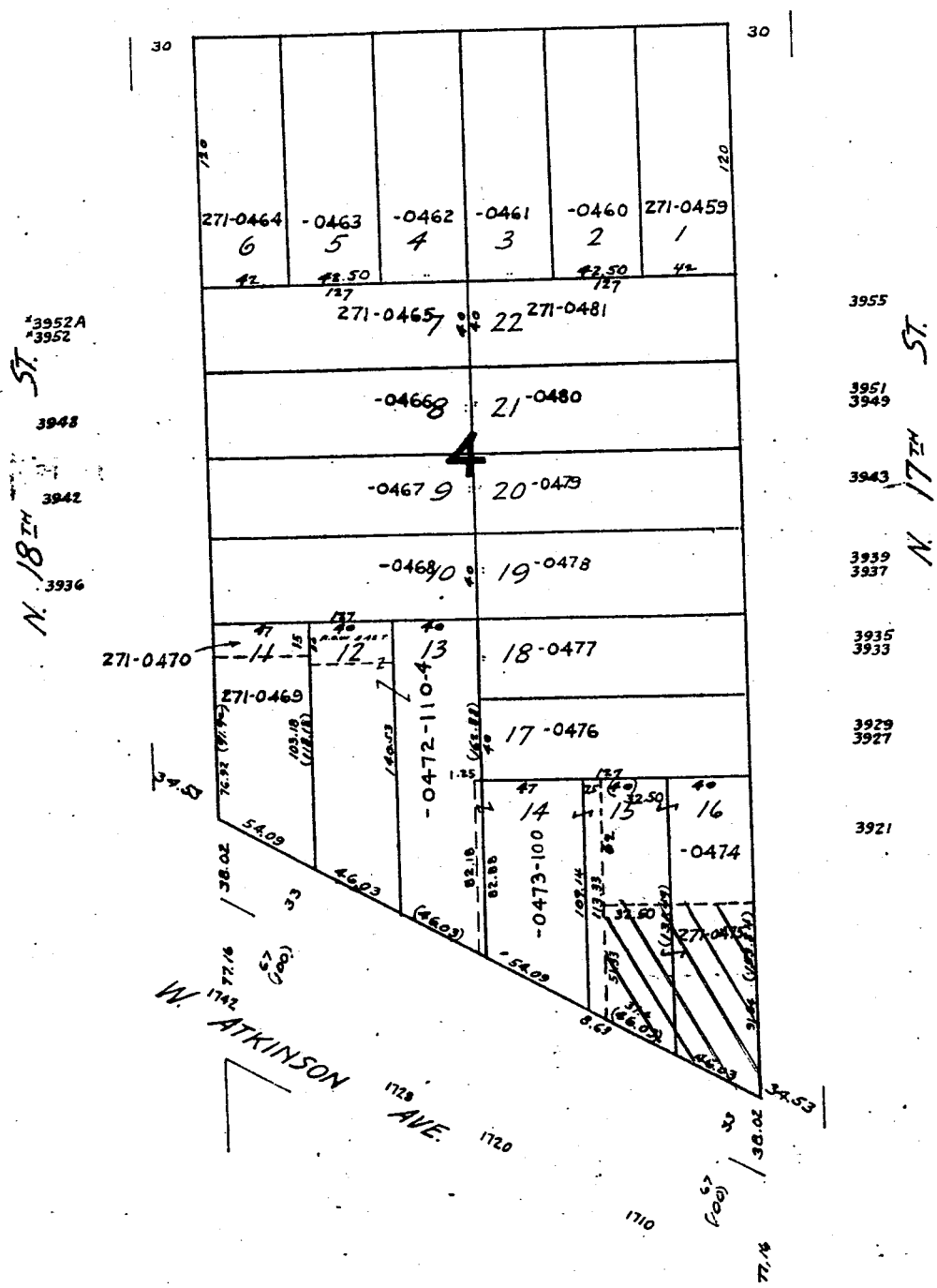
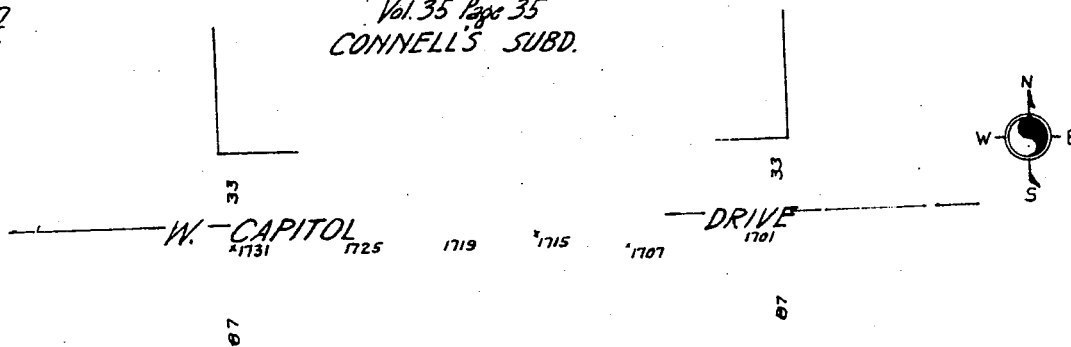
E AUER AV

BLUHM'S  
SUBDIVISION

N.E.7-7-22  
ATLAS P. 271

271  
Vol. 35 Page 35  
CONNELL'S SUBD.

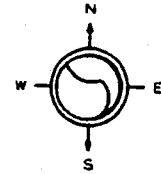
271-20



N. 18<sup>TH</sup> ST.  
3936  
3942  
3948  
3952  
3952A

N. 17<sup>TH</sup> ST.  
3921  
3927  
3929  
3933  
3935  
3937  
3939  
3943  
3949  
3951  
3955

W. ATKINSON AVE.  
1710  
1714  
1716  
1718  
1720



# GRAND VIEW PARK

## W BROWN ST

N 37TH ST

N 36TH ST

1973	30	120	1	30	18	30	120	1	30	1973
1971	30	348-0328				30	348-0328			1971
1967	62	32	1	58		30	348-0329	2		1967
1966							348-0330	3		1966
1965							348-0331	4		1965
1959								5	1	1959
1957							348-0332	6	2	1957
1955								6	2	1955
1949							348-0334	7	1	1949
1947								7	1	1947
1943							348-0335	8	1	1943
1941								8	1	1941
1937							348-0336	9	1	1937
1933							348-0337	10	1	1933
1931								10	1	1931
1929							348-0338	11	1	1929
1927							120	12	1	1927
1923							121	24	13	1923
1921								13	1	1921
1920	30	23	348-0348	30		30	348-0347	10		1920
1918	31.7	22	348-0347	10		30	121.24	50.10		1918
	18			18		18				
	40.34	30		18.2		18				
	120	348-0346				18	348-0345			
	21	20	19	18		18	348-0344			
	40.34	30				18	348-0343			
						18	348-0342			
						18	348-0341			
						18	348-0340			
						18	120			
						18	40.34			
						18	120			
						18	40.34			

## W LISBON AV

SE 18-7-22

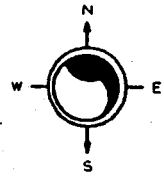
ATLAS P. 324

324

324-22

SCALE 1" = 80'

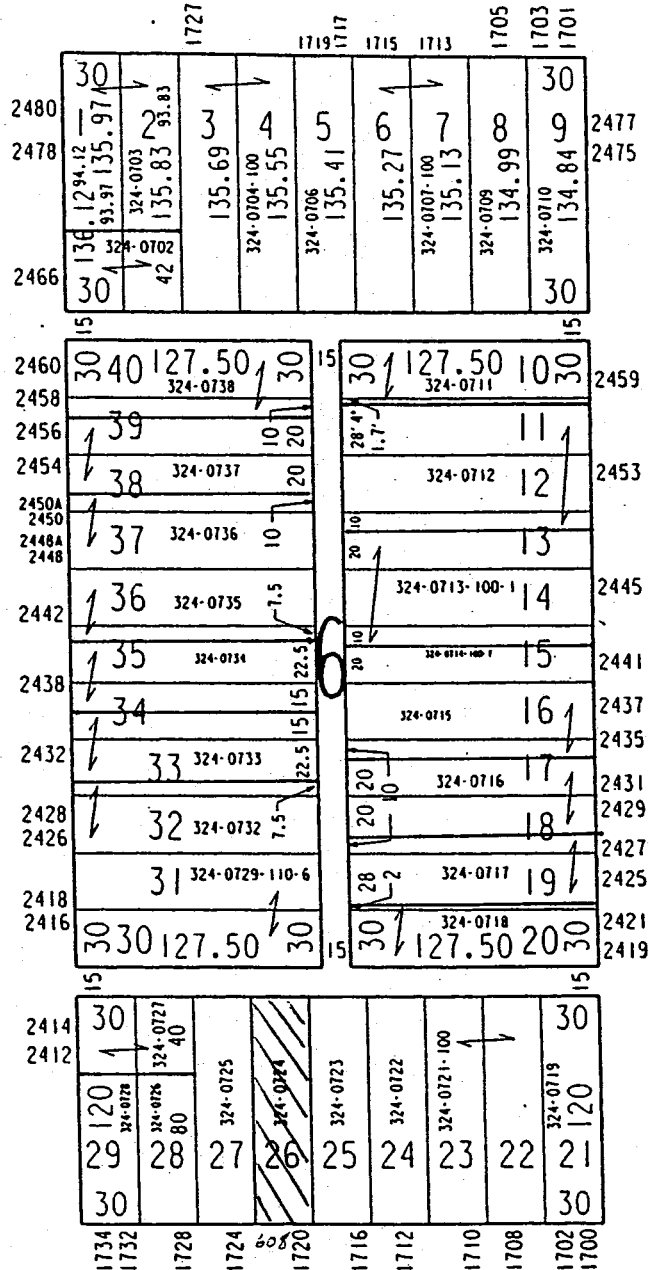
CONT. OF MEINECKE'S SUBD.



W WRIGHT ST

N 18TH ST

N 17TH ST



W MEINECKE AV