

Building
Property Line
Retaining Wall

IEBRANTZ AVE.

N. PORT WASH

(PUBL)

30.0

30.0

622.95

N.00°12'00"W. 524.94 MEAS.
526.78 REC.

N.00°12'00"W. 478.73

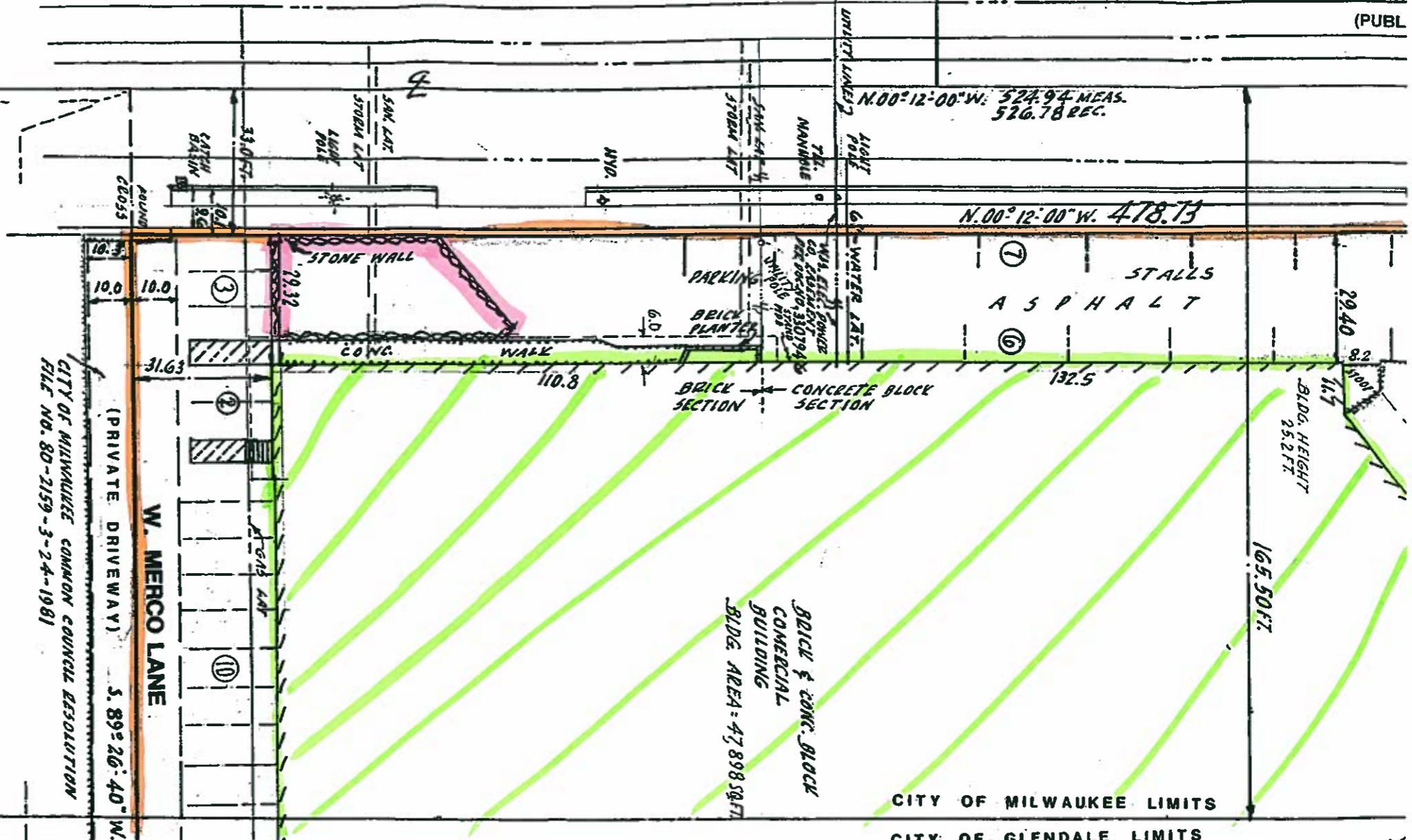
SOUTH LINE OF SE 1/4 SEC. 5
E OF W. CAPITOL DR. ALSO C.T.H. 190

CITY OF MILWAUKEE COMMON COUNCIL RESOLUTION
FILE NO. 80-2159-3-24-1981

(PRIVATE DRIVEWAY) 5.89°26'40" W.

W. MERCIO LANE

THE JAMES T B



BRICK & CONC. BLOCK
COMMERCIAL
BUILDING
BLDG. AREA: 47,898 SQFT

CITY OF MILWAUKEE LIMITS

CITY OF GLENDALE LIMITS