

Existing TID 24

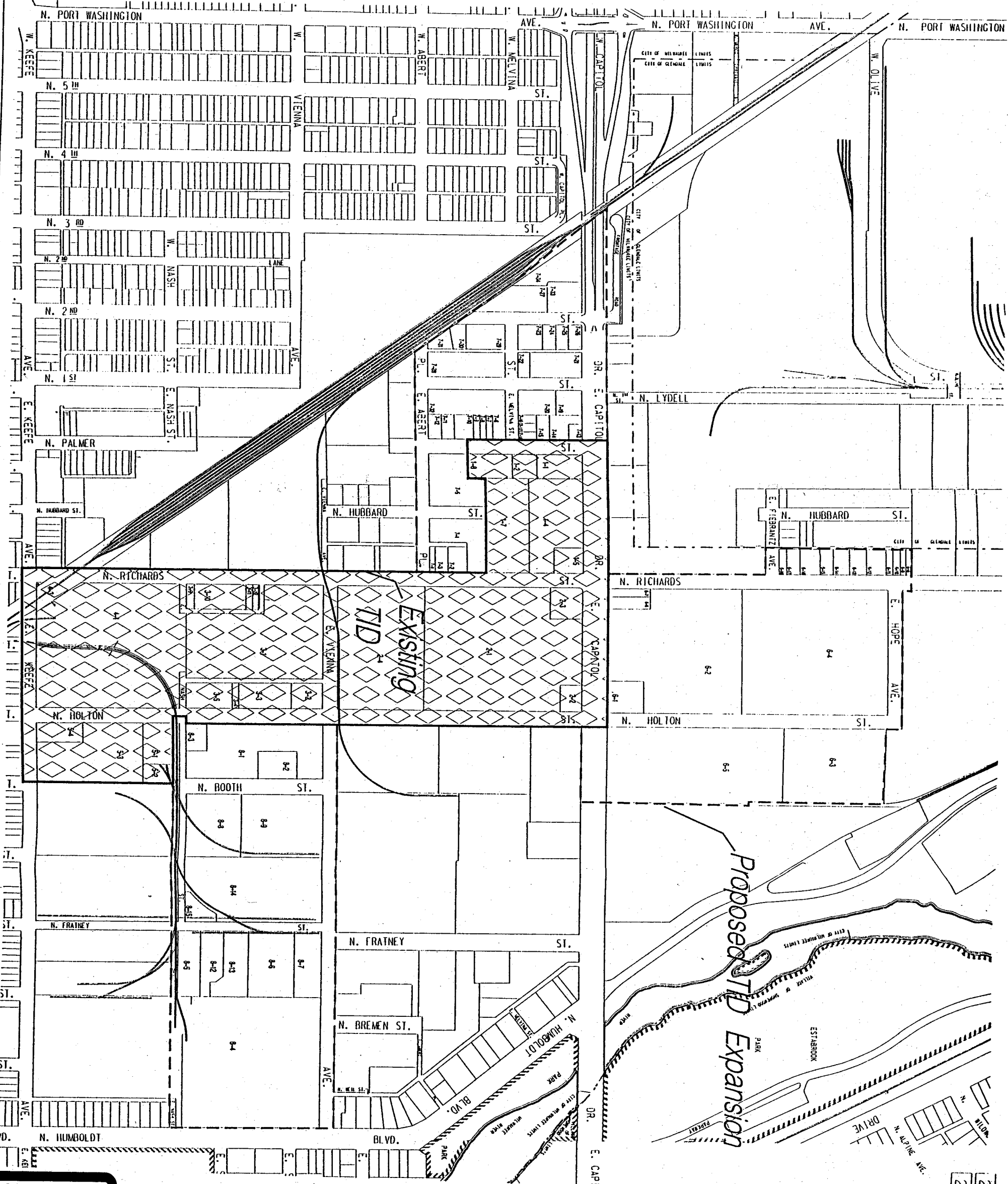
Proposed TID Expansion

MAP NO. Amended Boundary TID - 24

PARCEL NUMBER IDENTIFICATION



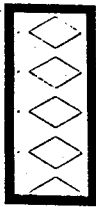
PRODUCED BY THE DEPARTMENT OF CITY DEVELOPMENT INFORMATION CENTER... DATE



242: 241
273: 274

EXHIBIT A

EXHIBIT 1



Existing TID 24

Proposed TID Expansion

LEGEND

PROJECT BOUNDARY	
1	CHURCH
2	HOTEL / MOTEL
3	ROOMING HOUSE
4	POLICE STATION
5	FIRE STATION
6	HOSPITAL
7	CONDOMINIUM
8	UTILITY COMPANY
9	STORAGE TANK
10	PARK
11	P.S.
12	PLAYGROUND
13	PARKING LOT
14	PARKING STRUCTURE
15	SINGLE OR DUPLEX RESIDENTIAL
16	MULTI-FAMILY RESIDENTIAL
17	MIXED COMMERCIAL / RESIDENTIAL
18	COMMERCIAL OR LOCAL BUSINESS
19	OFFICE / PROFESSIONAL SERVICES
20	MIXED COMMERCIAL
21	SKILLED CARE FACILITY
22	VACANT PARCEL
23	NON - PUBLIC EDUCATION
24	PUBLIC BUILDING
25	MANUFACTURING AND WAREHOUSING
26	ACCESSORY BUILDING
27	CEMETERY
28	TENNIS COURT
29	BASKETBALL COURT
30	DORMITORY

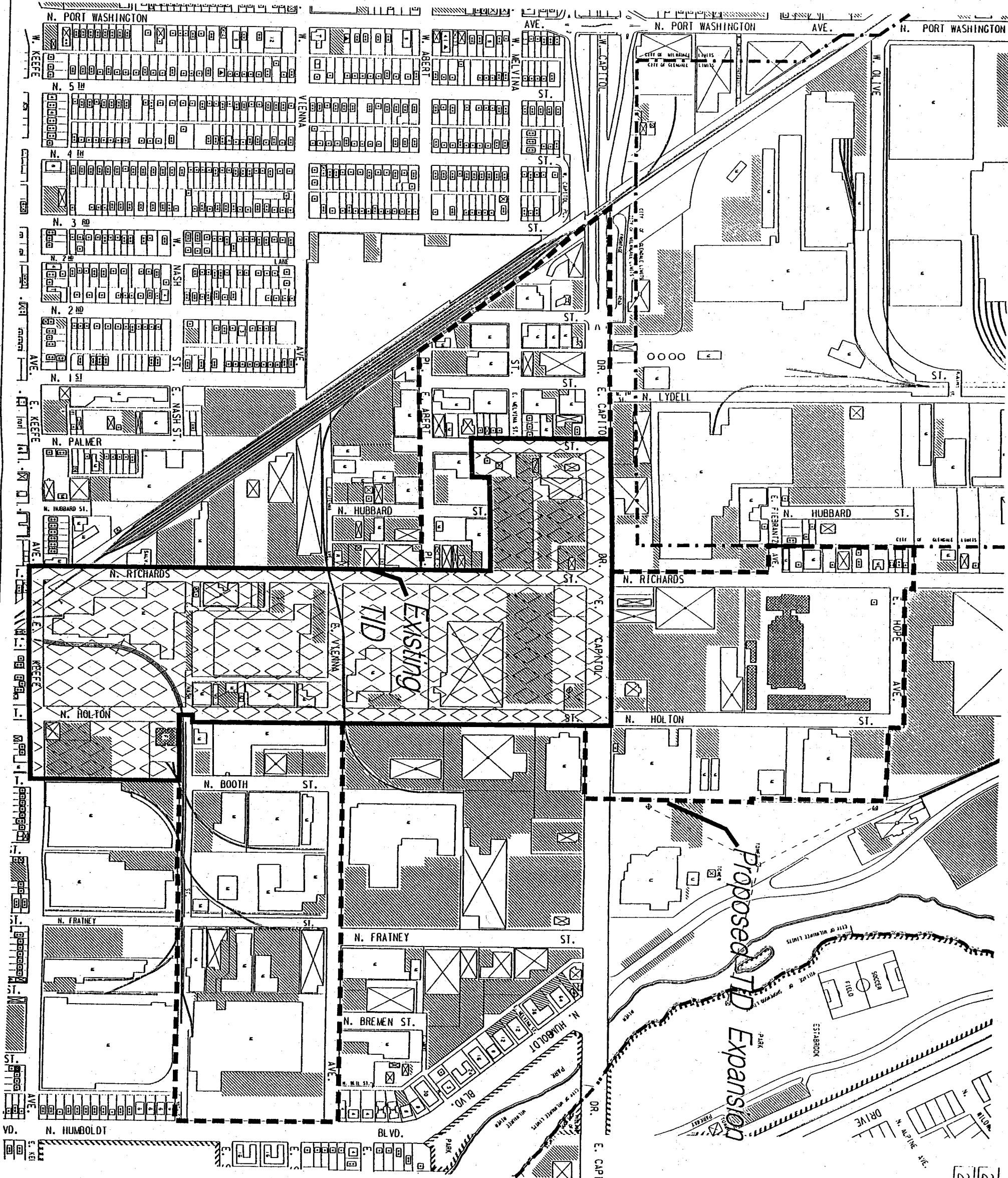
SCALE
1" = 100'



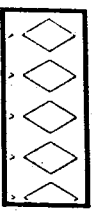
MAP NO. 1
Amended Boundary
TID - 24
BOUNDARY AND
EXISTING LAND USE

DATE

APPROVED BY THE DEPARTMENT OF CITY DEVELOPMENT, INFORMATION CENTER
Desford Hill • 4431, 013, 000
Pentagon Peninsula Station, 21-013-1
Color Table • 0113-00, 013
Generated: 18-AM-2001 J. Sogis • 4431, 013, 00000
Quincy St. • 18-AM-2001, Legend: 5122 • 4431, 013, 00000 MILWAUKEE, WI.



242 241
273 274



Existing TID 24

Proposed TID Expansion

ADDITIONAL PROPOSED IMPROVEMENTS AND USES

- INDUSTRIAL
- COMMERCIAL
- PUBLIC WORKS
- LAND ACQUISITION

PROPOSED USES

- INDUSTRIAL
- PUBLIC
- STREETS / ALLEYS / TRANSPORTATION

PROPOSED IMPROVEMENTS

- PUBLIC WORKS
- LAND ACQUISITION
- SINAGE / MONUMENTS *

(SEE SECTION III B. 1.b OF THIS PLAN FOR DETAILS Keyed numerically to the locations identified above.)

NOTE: IN ORDER TO CONFORM WITH SPECIFIC REDEVELOPMENT PROPOSALS AND WITH ENGINEERING DESIGN REQUIREMENTS ESTABLISHED BY THE CITY ENGINEER AND THE COMMISSIONER OF PUBLIC WORKS OF THE CITY OF MILWAUKEE, THIS MAP WHICH ILLUSTRATES BASIC PROJECT OBJECTIVES, MAY BE MODIFIED OR REVISED AS NECESSARY BY EACH DURING THE COURSE OF PROJECT EXECUTION WITHOUT AMENDMENT HEREOF, AS PROVIDED IN SECTION III B OF THIS PLAN.

* (Specific locations to be evaluated and designated during the course of the project implementation)



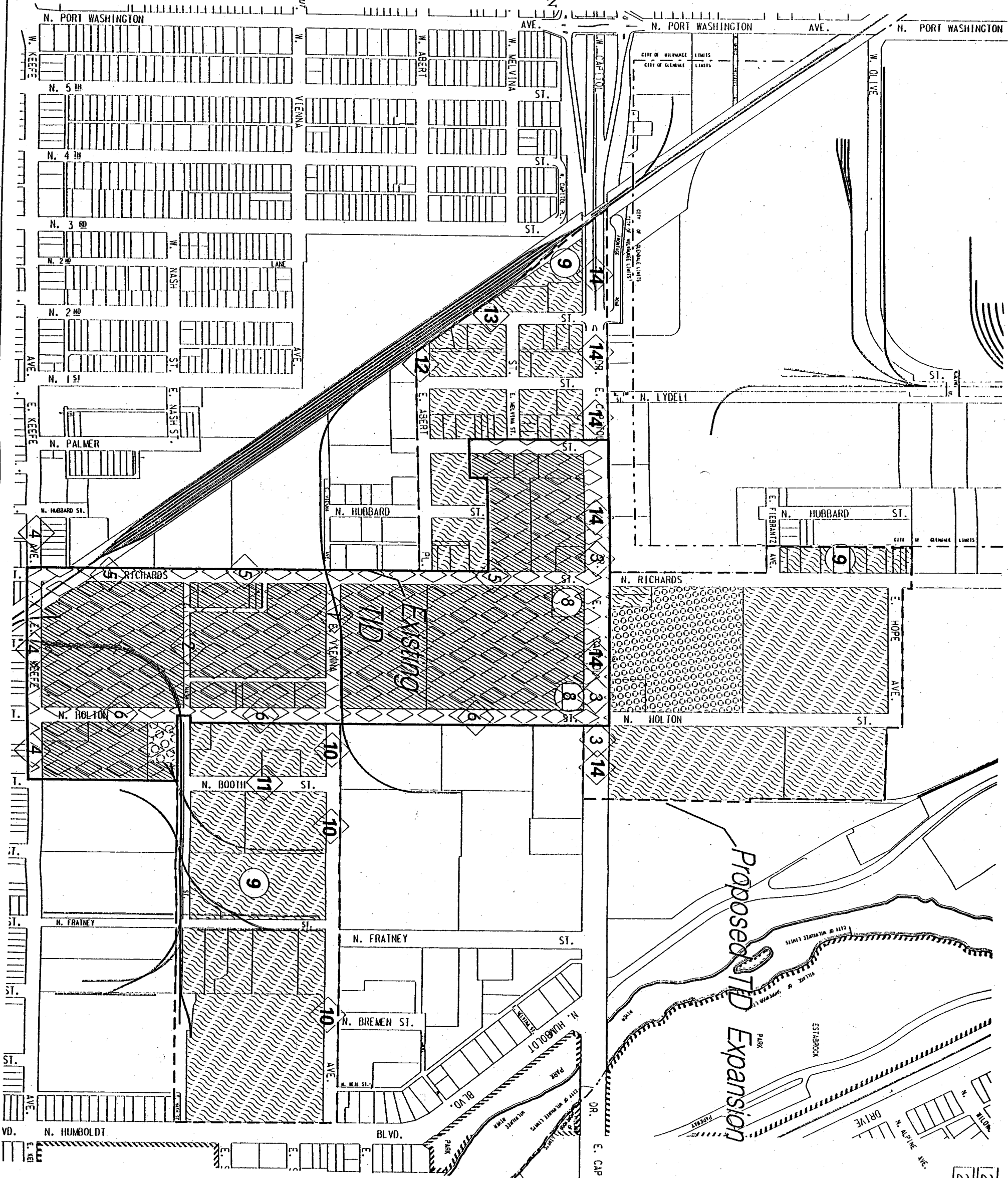
Amended Boundary
TID - 24

PROPOSED IMPROVEMENTS AND USES

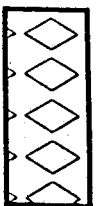
MAP NO. 3

DATE

PRODUCED BY THE DEPARTMENT OF CITY DEVELOPMENT INFORMATION CENTER
Design File # M-21-019-001
Permit Application # 001-001
Color Table - 01/10/00, etc
Generated (18-JAN-2001 1:45:57 PM) 4381.5714291.000000
MILWAUKEE, WI.



242	241
273	274



Existing TID 24



Proposed TID Expansion

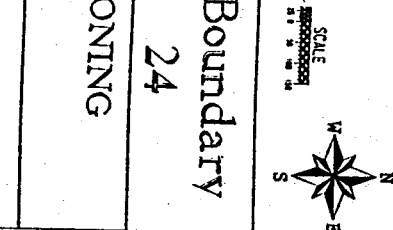
SINGLE-FAMILY RESIDENTIAL	TWO-FAMILY RESIDENTIAL	MULTI-FAMILY RESIDENTIAL	RESIDENTIAL /OFFICE
R/F-1/40 R/F-2/40 R/F-4/40 R/F-5/40	R/C-1/40 R/D-1/40 R/E/40	RM-1/40 RM-2/40 RM-3/40 RM-4/40 RM-5/40	RO-1/40 RO-2/40 RO-3/40 RO-4/40 RO-5/40
DETAILED PLANNED DEVELOPMENT	GENERAL PLANNED DEVELOPMENT	HIGH DENSITY RESIDENTIAL	RESIDENTIAL & SPECIALTY USE
DDP	GPD	C9A (A) C9A (B)	C9B (A) C9B (B)
NEIGHBORHOOD RETAIL	CIVIC ACTIVITY	MAJOR RETAIL	OFFICE AND SERVICE
C9C	C9D (A) C9D (B)	C9E	C9F (A) C9F (B) C9F (C)
MIXED ACTIVITY	WAREHOUSING AND LIGHT MANUFACTURING	PARKING	RESTRICTED OFFICE
C9G	C9H	P/C-40 P/R-40 P/L-1/15	O/R-40 O/E-40 O/S-40 O/F-4/40
LOCAL BUSINESS	COMMERCIAL SERVICE	REGIONAL SHOPPING	NEIGHBORHOOD SHOPPING
L/A-1/40 L/B-1/40 L/C-1/40 L/D-1/40 L/E-1/40 L/F-1/40 L/G-1/40 L/H-1/40 L/I-1/40 L/J-1/40 L/K-1/40 L/L-1/40 L/M-1/40 L/N-1/40 L/O-1/40 L/P-1/40 L/Q-1/40 L/R-1/40 L/S-1/40 L/T-1/40 L/U-1/40 L/V-1/40 L/W-1/40 L/X-1/40 L/Y-1/40 L/Z-1/40 L/AA-1/40 L/AB-1/40 L/AC-1/40 L/AD-1/40 L/AE-1/40 L/AF-1/40 L/AG-1/40 L/AH-1/40 L/AI-1/40 L/AJ-1/40 L/AK-1/40 L/AL-1/40 L/AM-1/40 L/AN-1/40 L/AO-1/40 L/AP-1/40 L/AQ-1/40 L/AR-1/40 L/AS-1/40 L/AT-1/40 L/AU-1/40 L/AV-1/40 L/AW-1/40 L/AX-1/40 L/AY-1/40 L/AZ-1/40 L/BA-1/40 L/BB-1/40 L/BC-1/40 L/BD-1/40 L/BE-1/40 L/BF-1/40 L/BG-1/40 L/BH-1/40 L/BI-1/40 L/BJ-1/40 L/BK-1/40 L/BL-1/40 L/BM-1/40 L/BN-1/40 L/BO-1/40 L/BP-1/40 L/BQ-1/40 L/BR-1/40 L/BS-1/40 L/BT-1/40 L/BU-1/40 L/BV-1/40 L/BW-1/40 L/BX-1/40 L/BY-1/40 L/BZ-1/40 L/CA-1/40 L/CB-1/40 L/CC-1/40 L/CD-1/40 L/CE-1/40 L/CF-1/40 L/CG-1/40 L/CH-1/40 L/CI-1/40 L/CJ-1/40 L/CK-1/40 L/CL-1/40 L/CM-1/40 L/CN-1/40 L/CO-1/40 L/CP-1/40 L/CQ-1/40 L/CR-1/40 L/CS-1/40 L/CT-1/40 L/CU-1/40 L/CA-1/40 L/AB-1/40 L/AC-1/40 L/AD-1/40 L/AE-1/40 L/AF-1/40 L/AG-1/40 L/AH-1/40 L/AI-1/40 L/AJ-1/40 L/AK-1/40 L/AL-1/40 L/AM-1/40 L/AN-1/40 L/AO-1/40 L/AP-1/40 L/AQ-1/40 L/AR-1/40 L/AS-1/40 L/AT-1/40 L/AU-1/40 L/AV-1/40 L/AW-1/40 L/AX-1/40 L/AY-1/40 L/AZ-1/40 L/BA-1/40 L/BB-1/40 L/BC-1/40 L/BD-1/40 L/BE-1/40 L/BF-1/40 L/BG-1/40 L/BH-1/40 L/BI-1/40 L/BJ-1/40 L/BK-1/40 L/BL-1/40 L/BM-1/40 L/BN-1/40 L/BO-1/40 L/BP-1/40 L/BQ-1/40 L/BR-1/40 L/BS-1/40 L/BT-1/40 L/BU-1/40 L/BV-1/40 L/BW-1/40 L/BX-1/40 L/BY-1/40 L/BZ-1/40 L/CA-1/40 L/CB-1/40 L/CC-1/40 L/CD-1/40 L/CE-1/40 L/CF-1/40 L/CG-1/40 L/CH-1/40 L/CI-1/40 L/CJ-1/40 L/CK-1/40 L/CL-1/40 L/CM-1/40 L/CN-1/40 L/CO-1/40 L/CP-1/40 L/CQ-1/40 L/CR-1/40 L/CS-1/40 L/CT-1/40 L/CU-1/40			
MANUFACTURING	INDUSTRIAL	LAKEFRONT	INSTITUTIONAL
M/1-50 M/2-50 M/3-50 M/4-50 M/5-50 M/6-50 M/7-50 M/8-50 M/9-50 M/10-50 M/11-50 M/12-50 M/13-50 M/14-50 M/15-50 M/16-50 M/17-50 M/18-50 M/19-50 M/20-50 M/21-50 M/22-50 M/23-50 M/24-50 M/25-50 M/26-50 M/27-50 M/28-50 M/29-50 M/30-50 M/31-50 M/32-50 M/33-50 M/34-50 M/35-50 M/36-50 M/37-50 M/38-50 M/39-50 M/40-50 M/41-50 M/42-50 M/43-50 M/44-50 M/45-50 M/46-50 M/47-50 M/48-50 M/49-50 M/50-50	I/O-1/40 I/O-2/40 I/O-3/40 I/O-4/40 I/O-5/40 I/O-6/40 I/O-7/40 I/O-8/40 I/O-9/40 I/O-10/40 I/O-11/40 I/O-12/40 I/O-13/40 I/O-14/40 I/O-15/40 I/O-16/40 I/O-17/40 I/O-18/40 I/O-19/40 I/O-20/40 I/O-21/40 I/O-22/40 I/O-23/40 I/O-24/40 I/O-25/40 I/O-26/40 I/O-27/40 I/O-28/40 I/O-29/40 I/O-30/40 I/O-31/40 I/O-32/40 I/O-33/40 I/O-34/40 I/O-35/40 I/O-36/40 I/O-37/40 I/O-38/40 I/O-39/40 I/O-40/40 I/O-41/40 I/O-42/40 I/O-43/40 I/O-44/40 I/O-45/40 I/O-46/40 I/O-47/40 I/O-48/40 I/O-49/40 I/O-50/40	L/F-C/60	I/S-1/40 I/S-2/40 I/S-3/40 I/S-4/40 I/S-5/40 I/S-6/40 I/S-7/40 I/S-8/40 I/S-9/40 I/S-10/40 I/S-11/40 I/S-12/40 I/S-13/40 I/S-14/40 I/S-15/40 I/S-16/40 I/S-17/40 I/S-18/40 I/S-19/40 I/S-20/40 I/S-21/40 I/S-22/40 I/S-23/40 I/S-24/40 I/S-25/40 I/S-26/40 I/S-27/40 I/S-28/40 I/S-29/40 I/S-30/40 I/S-31/40 I/S-32/40 I/S-33/40 I/S-34/40 I/S-35/40 I/S-36/40 I/S-37/40 I/S-38/40 I/S-39/40 I/S-40/40 I/S-41/40 I/S-42/40 I/S-43/40 I/S-44/40 I/S-45/40 I/S-46/40 I/S-47/40 I/S-48/40 I/S-49/40 I/S-50/40

MAP NO. 5

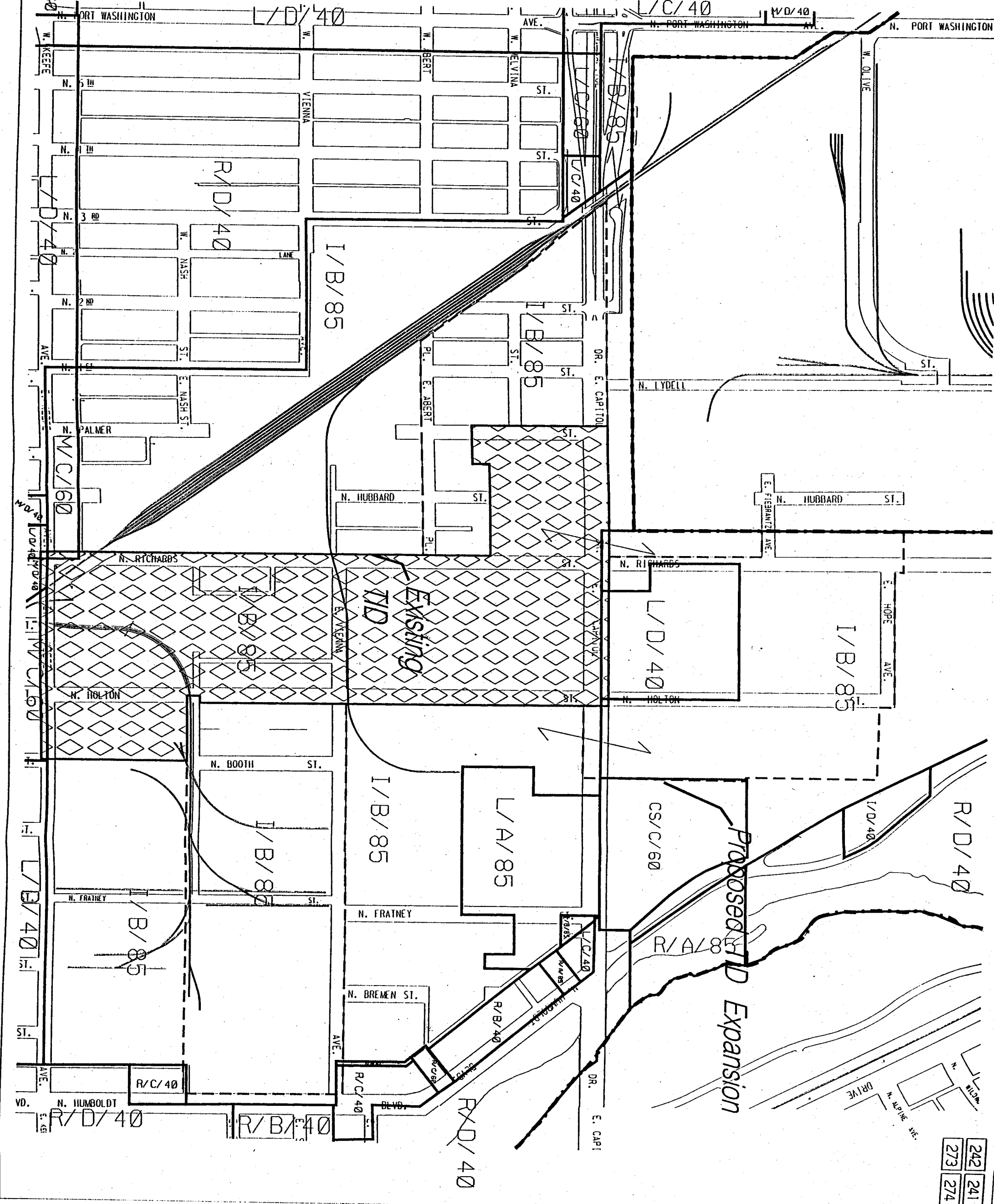
Amended Boundary
TID - 24

EXISTING ZONING MAP

DATE



PRODUCED BY THE DEPARTMENT OF CITY DEVELOPMENT INFORMATION CENTER
Design File # W-21-019-000
Paralegal: Dawn J. O'Brien, CSD
Color Table: 01-11-01-00-00
Generated: 19-JAN-2001 1:58:43 PM
Office: 19-VLAHNESEN-WP-1-SEWER-ST-28 - (18.538111) 10.50000 MILWAUKEE, WI.



242	241
273	274