



N.E. 24-7-21

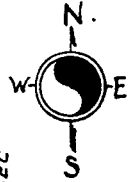
ATLAS P. 349

349

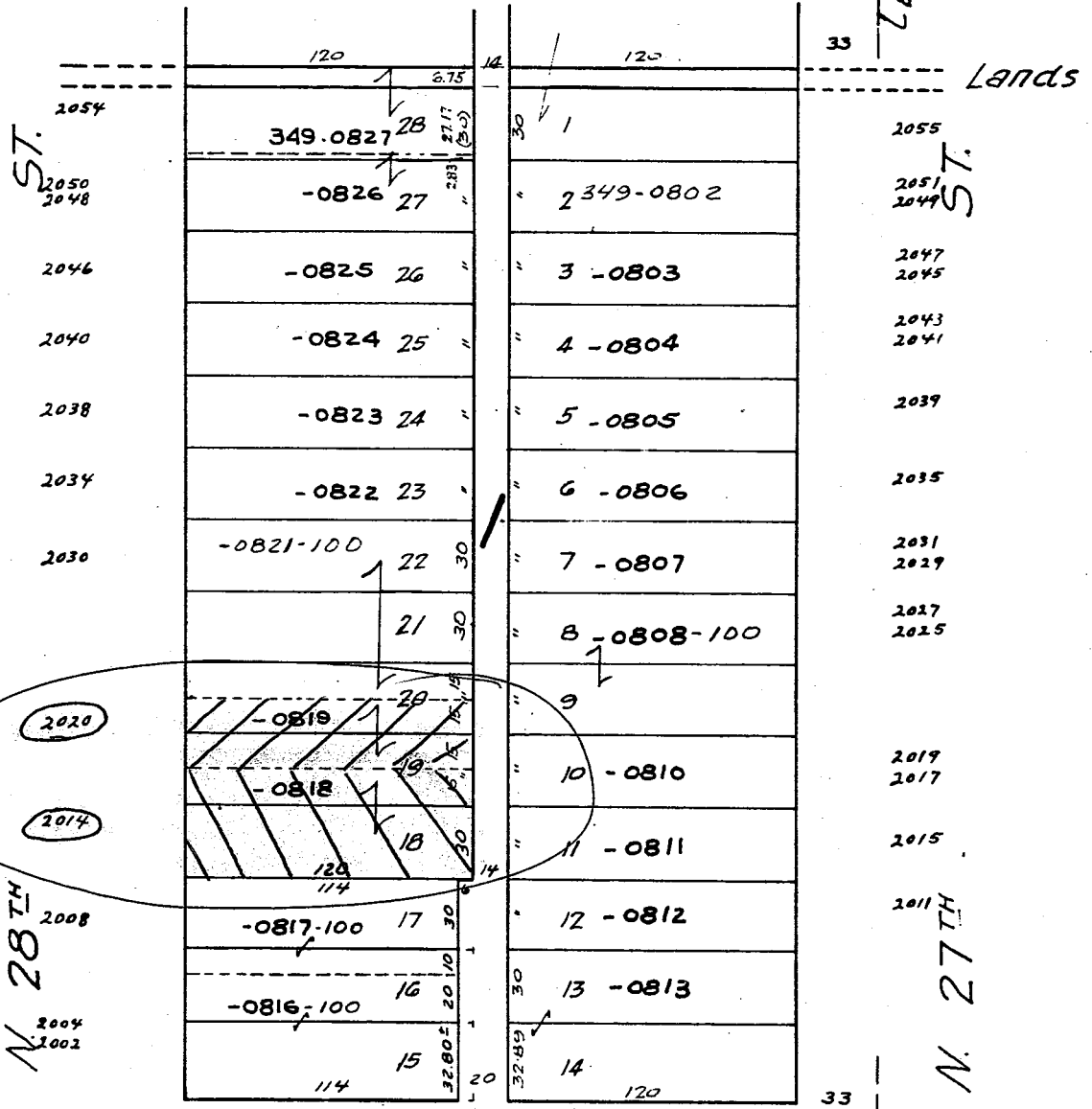
349-03

GARFIELD HEIGHTS

PAGE 349-02 ADJ.



LE 1 1/4 SEC



N. 28th

N. 28th

N. 27th

N. 27th

W. BROWN

2712

ST.

LE 1 1/4 SEC

N.E. 24-7-21  
ATLAS R. 349

349

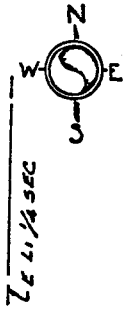
349-04

Garfield Heights

W. BROWN

2711

ST.



ST.

1960 1951	120 349-0930 32	120 349-0907	33
	---	30 2	
1954	-0929 30	3 -0908	1953
1948	-0928 29	4 -0909	1947
1942	-0927 28	5 -0910	1945
1940 1938	-0926 27	6	1943
	---	7 -0911	1937
	25	8 -0912	1935
1930	-0924-100 24	9 -0913	1933
1922	-0923 23	10	1927 1925
	22	11 -0914	1923 1921
1916	-0922 21	12 -0915	1917 1915
1912	-0921 20	13 -0916	1911 1909
1910 1908	-0920 19	14	1905 1903
	18	15 -0917	
1902	-0919 17	16 (070) 01	

ST.

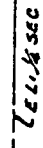
N. 28<sup>TH</sup>

N. 27<sup>TH</sup>

W. VINE

2714

ST.



MICROFILMED 3.11.57

N.E. 24-7-21  
ATLAS P. 349

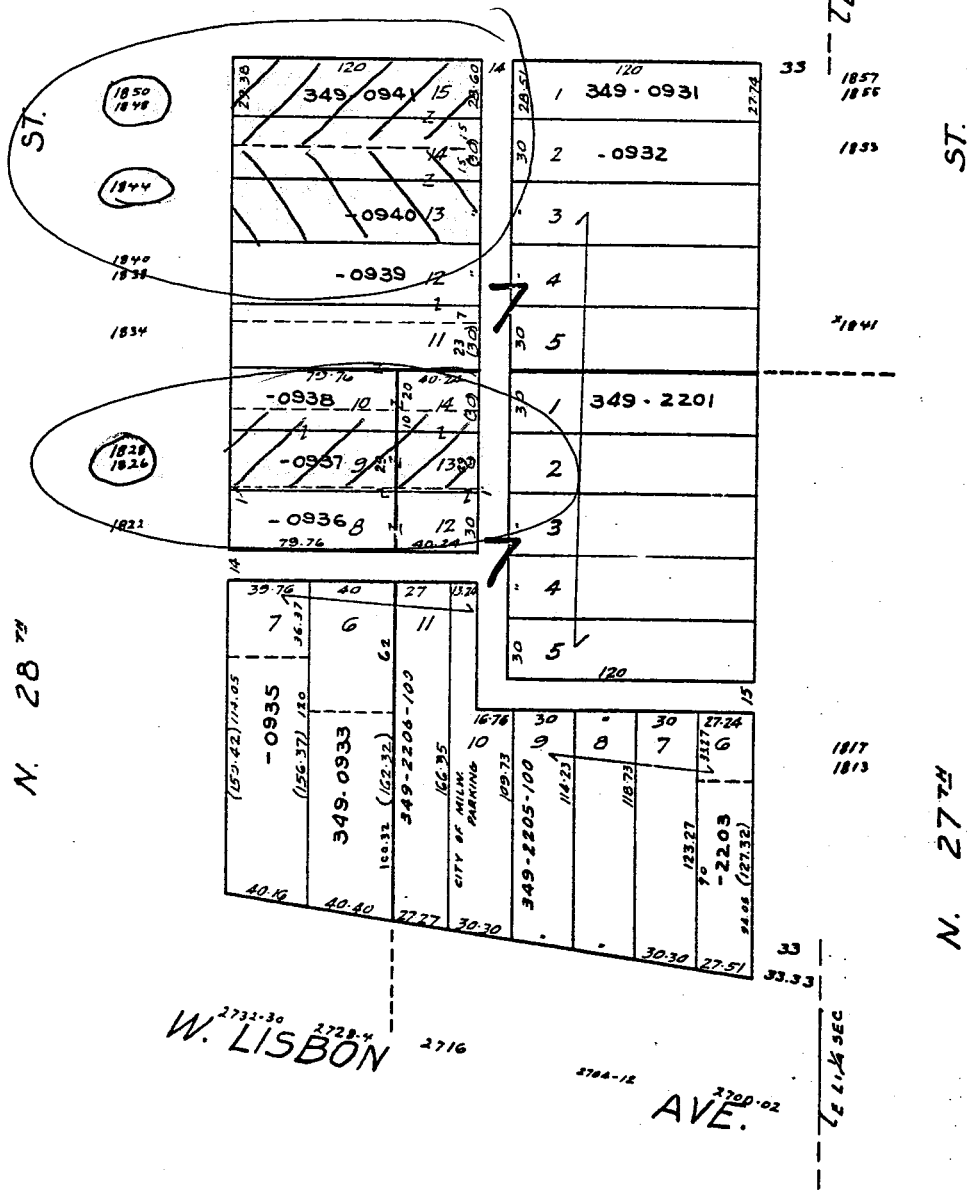
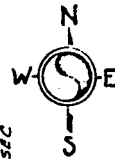
349

349-05

Garfield Heights

W. VINE ST.

ST.



1-1-85

W. LISBON

AVE.

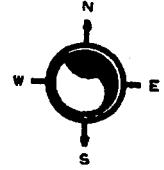
Schmitt's Subd.

NE 24-7-21  
ATLAS P. 349

349

349-09

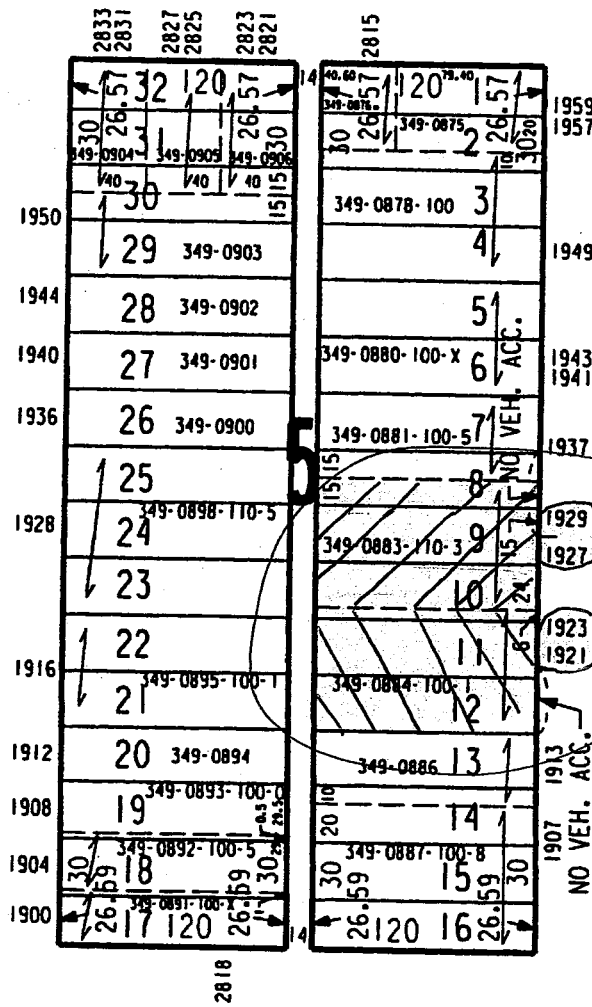
SCALE 1" = 80'



# GARFIELD HEIGHTS W BROWN ST

N 29TH ST

N 28TH ST



W VINE ST



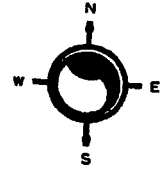
SW 24-7-21

ATLAS P. 366

366

366-03

SCALE 1" = 80'

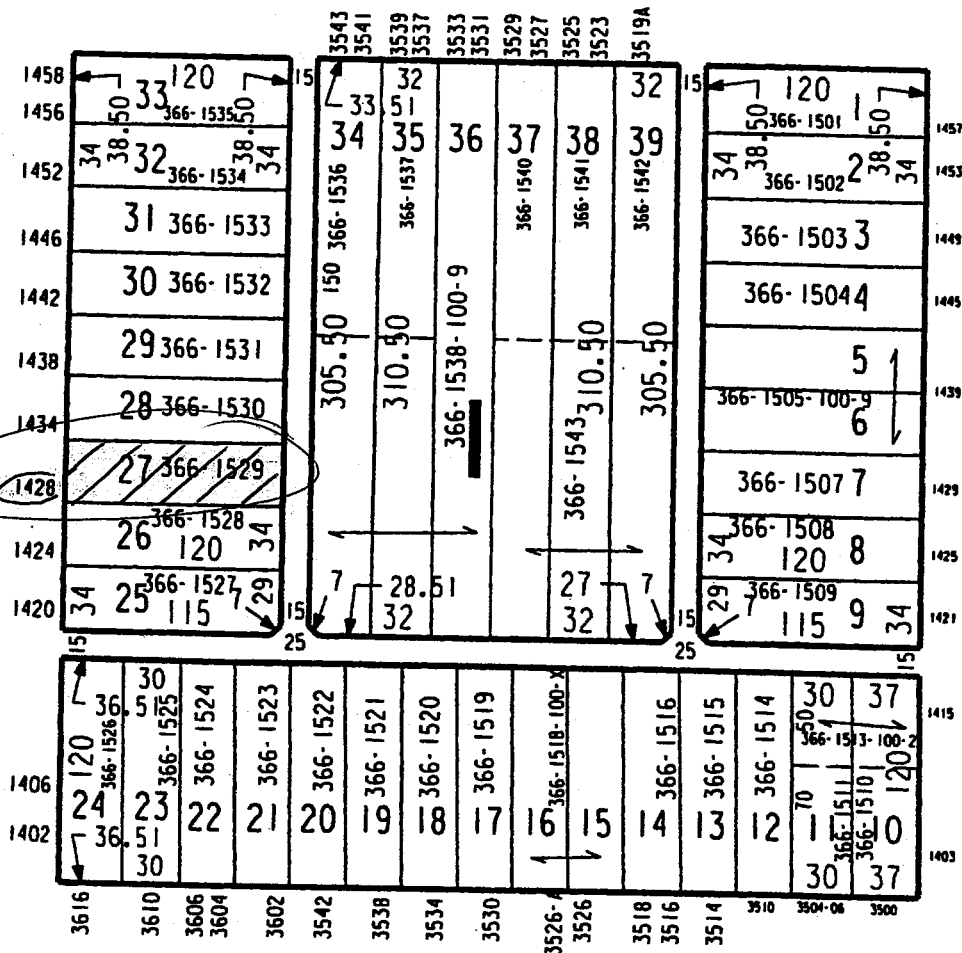


SCHNEIDER'S PARK

W CHERRY ST

N 37TH ST

N 35TH ST



W VLIET ST

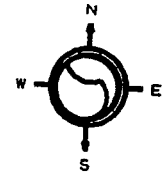
SW 24-7-21

ATLAS P. 366

366

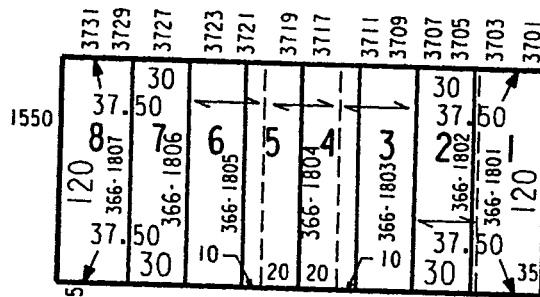
366-11

SCALE 1" = 80'

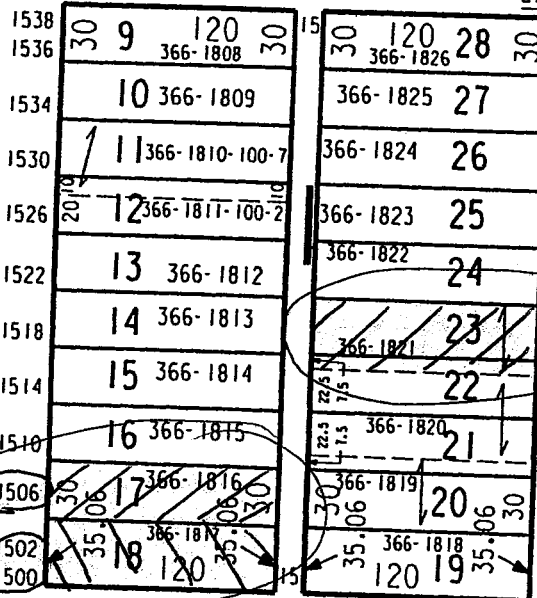


# WOODLAWN PARK NO. 2

## W GALENA ST



## N 38TH ST



## N 37TH ST

## W CHERRY ST



S.W. 24-7-21  
172 AS P. 366

366

COLD SPRING HEIGHTS  
Vol. 11 Page 37

366-14



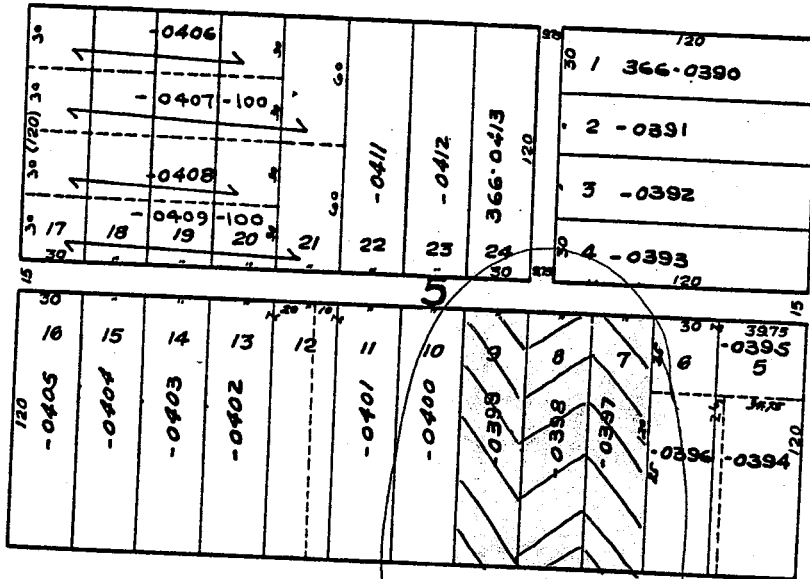
W. WALNUT

3727-9 3723-5 3719

ST.

ST. 1630-2  
1628-8  
1622-4  
1618-20

N. 38<sup>TH</sup>



1631-3  
1627-9  
1623-5  
1621  
1613-5  
ST.  
N. 37<sup>TH</sup>

3746-8 3742-4 3738-10 3734-6 3728-8 3722-4 3716-8 3710-4 3704-10 3700-6 3700-2  
W. GALENA ST.

2-23-83

S.W. 24-7-21  
ATLAS P. 366

366  
WOODLAWN PARK NO. 2  
Vol. 18 Page 31



W. GALENA  
3831 3827 3823 3819-2; 3813-5 3809-1  
ST. 3801-3

ST.

ST.

120	8 - 1833	30	120	7 - 1832	30	120	6 - 1831	30	120	5 - 1830	30	120	4 - 1829	30	120	3 - 1828	30	120	2 - 1827	30	120	1 - 1826	30
-----	----------	----	-----	----------	----	-----	----------	----	-----	----------	----	-----	----------	----	-----	----------	----	-----	----------	----	-----	----------	----

1538-40	120	9 - 1834	30	15	30	28 366-1852	15	1539
1532-4	120	10 - 1835	30	2	30	27 - 1851	15	1535
1528-30	120	11 - 1836	30	25	30	26 - 1850	15	1531
1526	120	12 - 1837	30	24	30	25 - 1849	15	1527
1522	120	13 - 1838	30	23	30	24 - 1848	15	1521-3
1518	120	14 - 1839	30	22	30	23 - 1847	15	1519
1512-4	120	15 - 1840	30	21	30	22 - 1846	15	1515
1508-10	120	16 - 1841	30	20	30	21 - 1845	15	1509-11
1507-4	120	17 - 1842	30	19	30	20 - 1844	15	1507
	120	18 - 1843	30	18	30	19 - 1843	15	1503

N. 39TH

N. 38TH

W. CHERRY

ST.

REPRODUCED