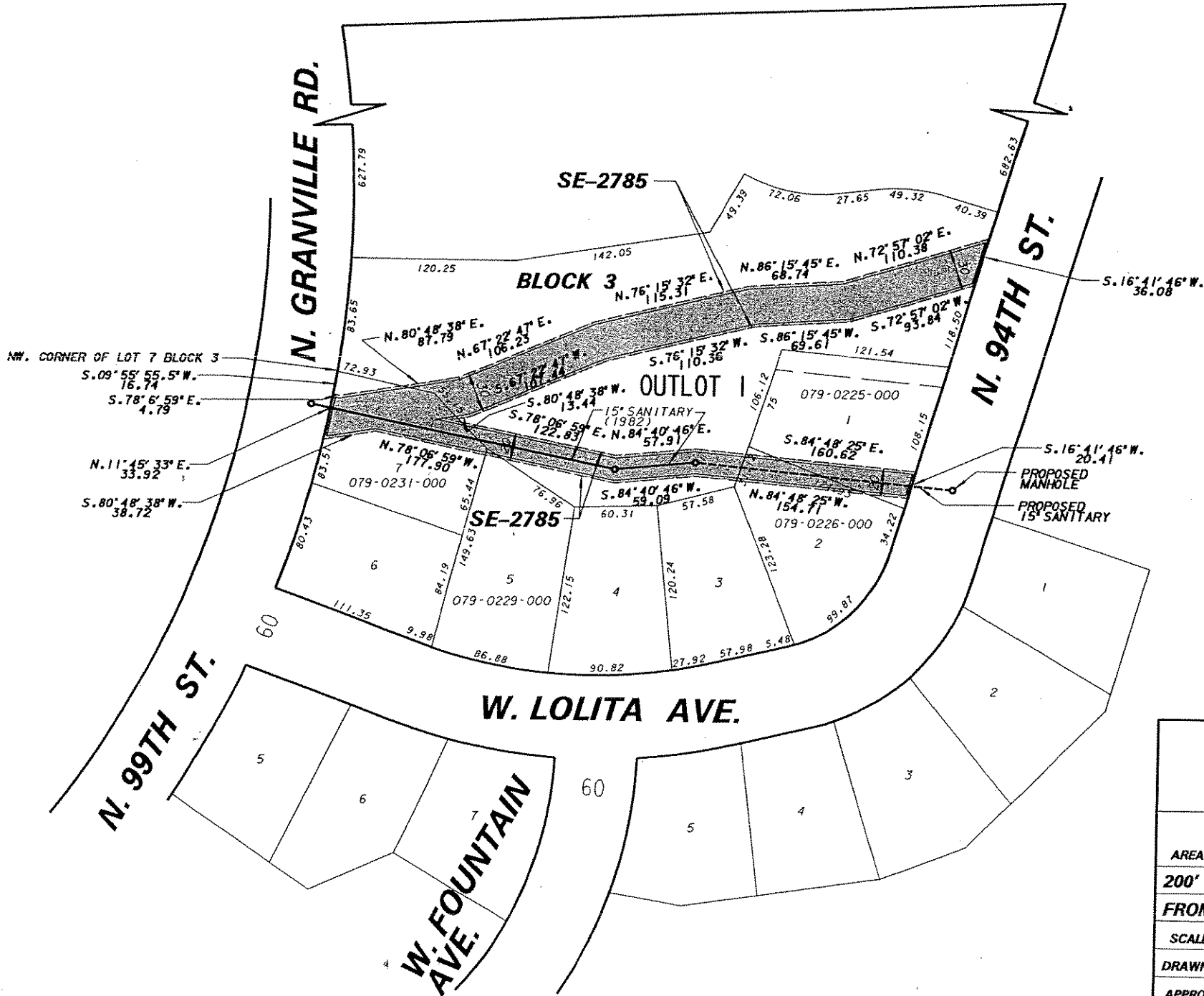


W. BRADLEY RD.



ENVIRONMENTAL ENGINEER	
INFRASTRUCTURE SERVICE	
DEPARTMENT OF PUBLIC WORKS	
MILWAUKEE, WISCONSIN	
PLAN OF SEWER AND DRAINAGE	
AREA IN	NE.1/4 SEC.17, T.17N, R.12E
200' +/- NORTH OF WEST LOLITA AVE.	
FROM NORTH GRANVILLE ROAD TO	
SCALE 1" = 100'	ATLAS PAGE NO. 079
DRAWN BY LPK	CH'KD. BY SB, E1
APPROVED	<i>Martin J. Quinn</i>
APPROVED	<i>[Signature]</i>