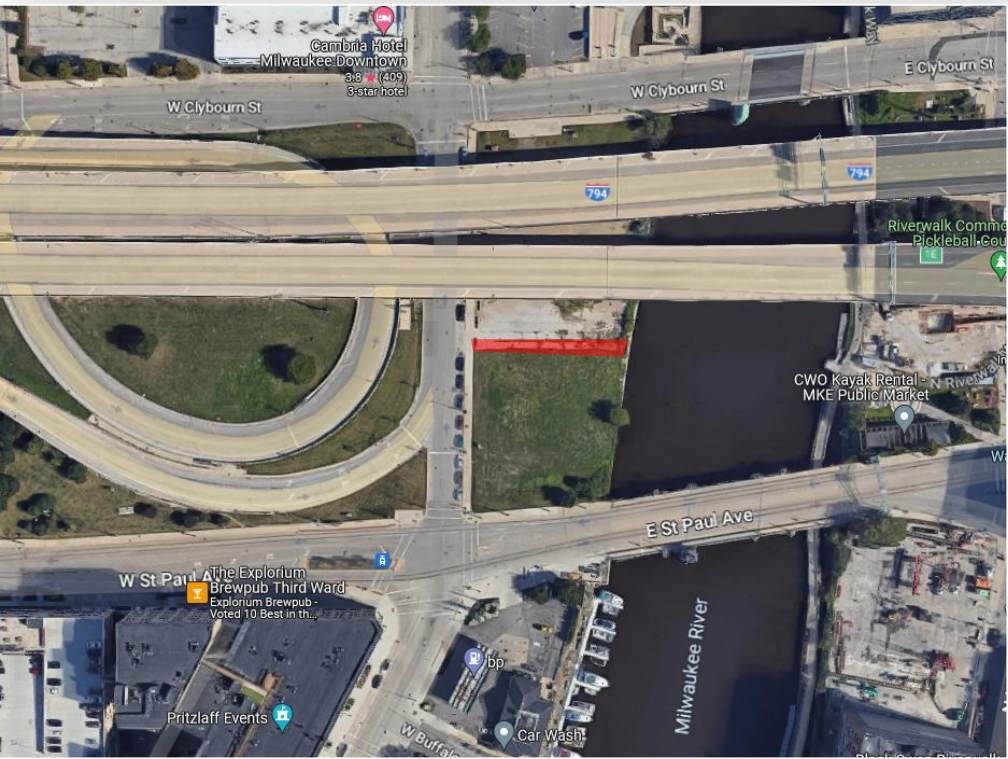
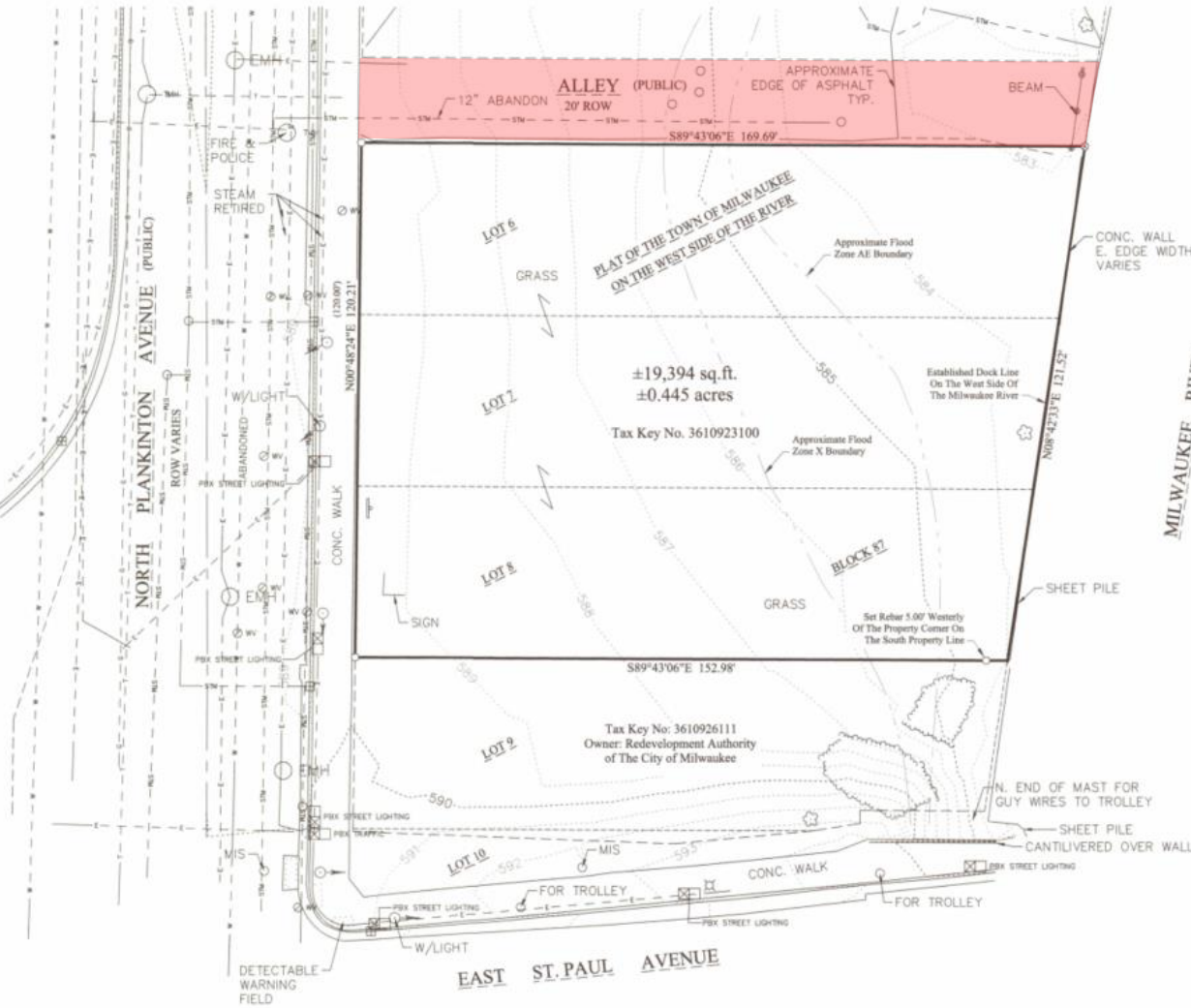
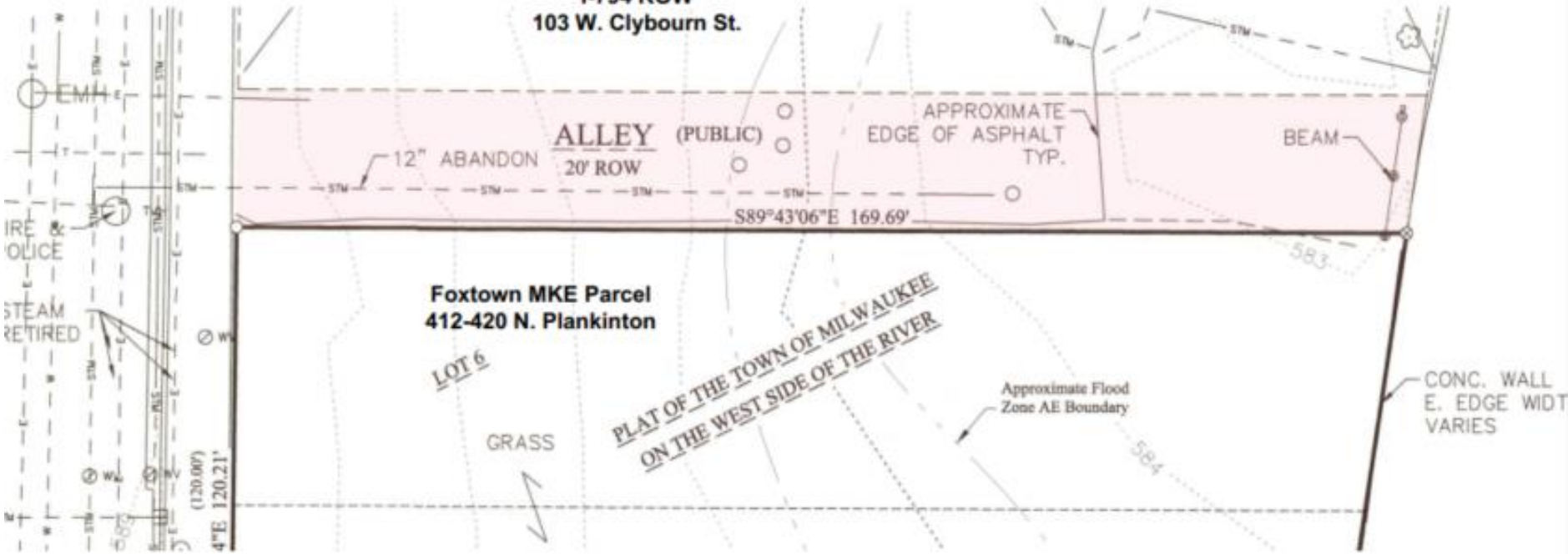


File No. 221691. Resolution to vacate the alley in the block bound by East Clybourn Street, North Plankinton Avenue, East St. Paul Avenue and the Milwaukee River, in the 4th Aldermanic District.





WisDOT /County Property  
I-794 ROW  
103 W. Clybourn St.

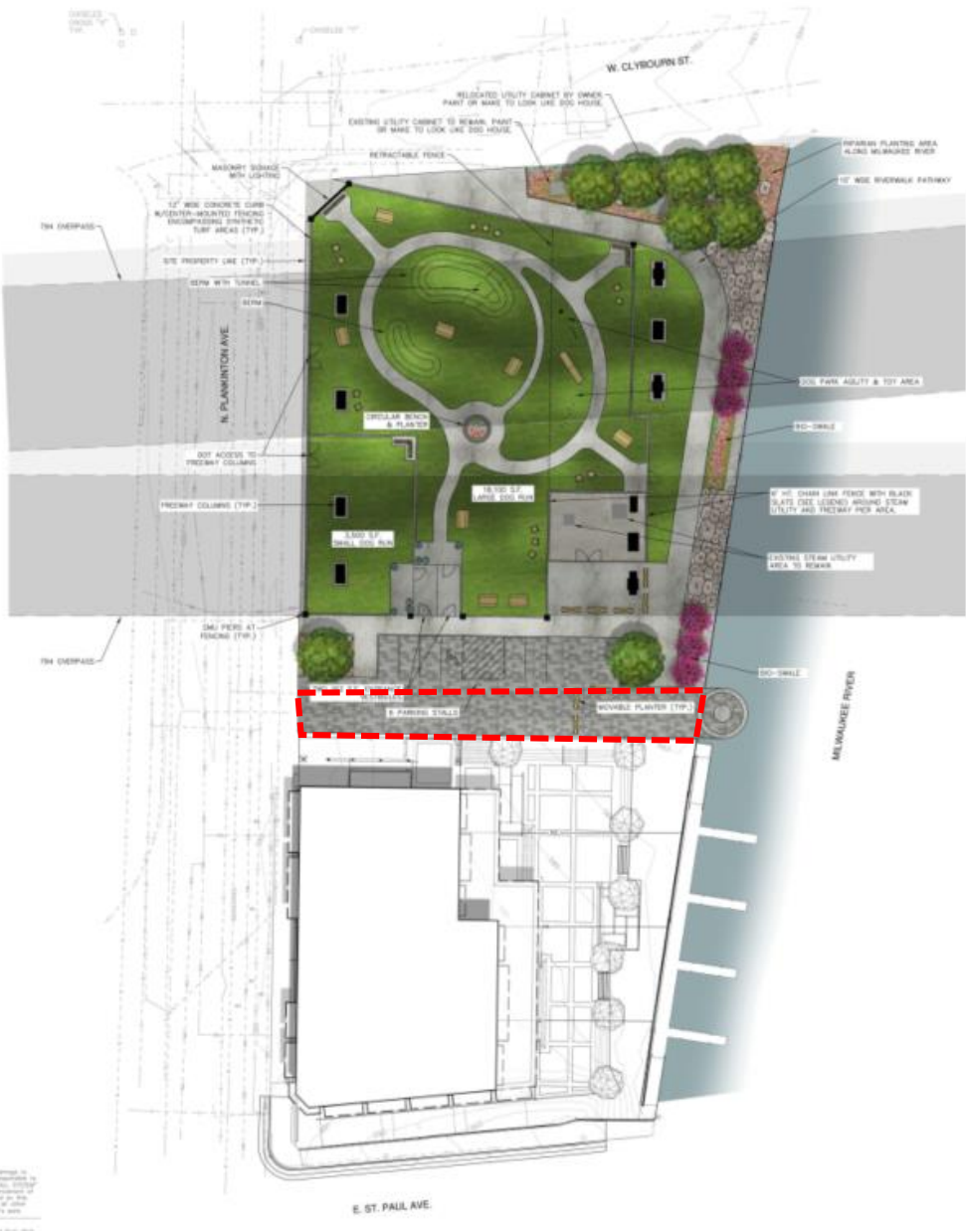




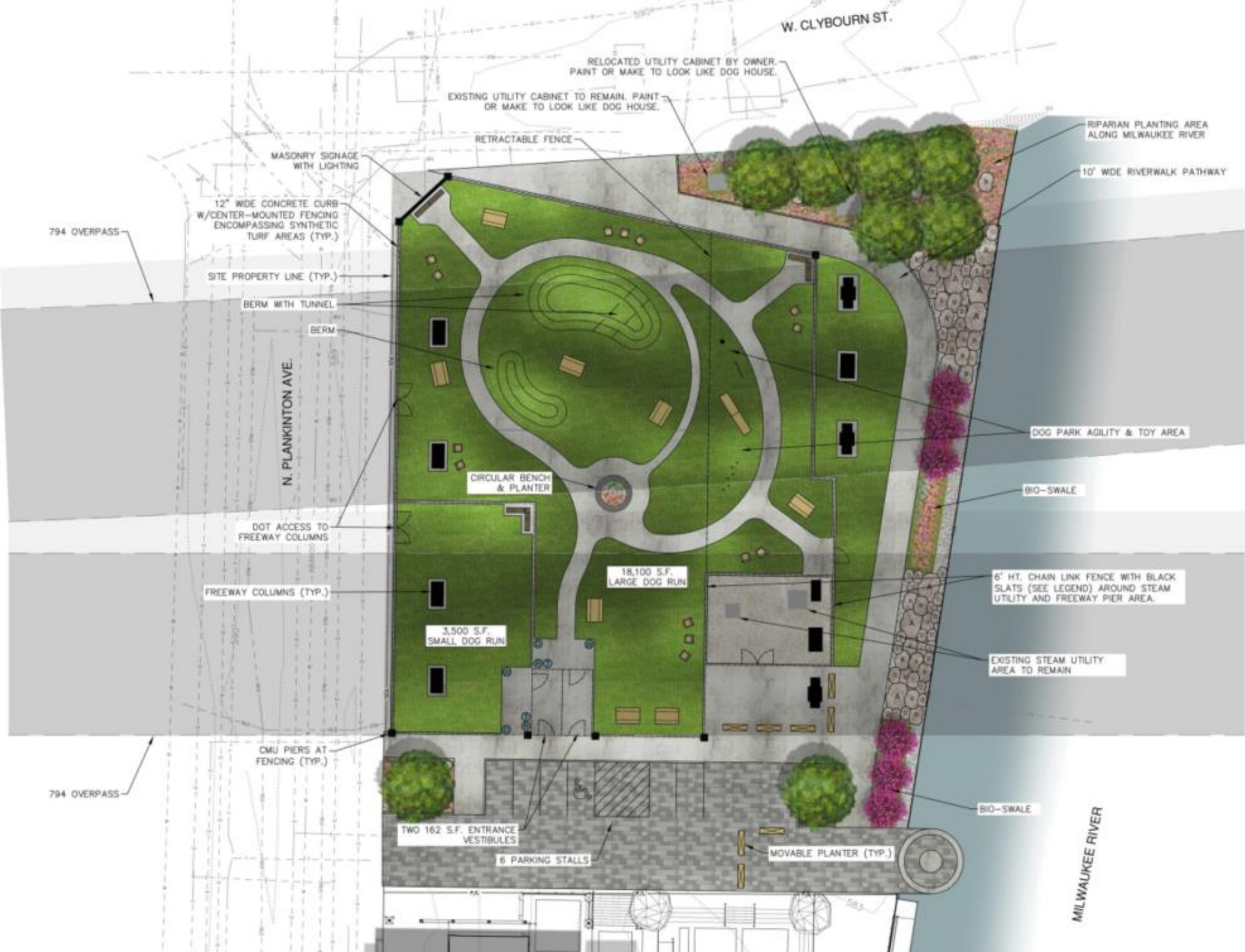


**LEGEND**

- 6 FT. ORNAMENTAL IRON FENCE (BLACK)
- 6 FT. CHAIN LINK SLATTED FENCE (BLACK)
- 6 FT. RETRACTABLE FENCE (BLACK)
- SHADE TREE
- ORNAMENTAL TREE
- 7'-8" ROUNDED GRANITE BOULDER
- 6'-7" ROUNDED GRANITE BOULDER
- 5'-6" ROUNDED GRANITE BOULDER
- 4'-5" ROUNDED GRANITE BOULDER
- TRASH RECEPTACLE
- RECYCLING RECEPTACLE
- DOG BAG & WASTE RECEPTACLE
- WATER FOUNTAIN / DOG FOUNTAIN
- CUSTOM PE WOOD BENCH
- 24" UPRIGHT MOVABLE PLANTER
- PONG TABLE
- ADIRONDACK CHAIR
- CONCRETE
- SPECIALTY PAVING
- MACADAM STONE
- RIPRAP STONE
- SYNTHETIC TURF
- NATIVE PLANTINGS (SHRUBS, PERENNIALS, & ORNAMENTAL GRASSES)



NOTES:  
 1. ALL DIMENSIONS ARE UNLESS OTHERWISE NOTED.  
 2. ALL DIMENSIONS ARE UNLESS OTHERWISE NOTED.  
 3. ALL DIMENSIONS ARE UNLESS OTHERWISE NOTED.  
 4. ALL DIMENSIONS ARE UNLESS OTHERWISE NOTED.  
 5. ALL DIMENSIONS ARE UNLESS OTHERWISE NOTED.  
 6. ALL DIMENSIONS ARE UNLESS OTHERWISE NOTED.  
 7. ALL DIMENSIONS ARE UNLESS OTHERWISE NOTED.  
 8. ALL DIMENSIONS ARE UNLESS OTHERWISE NOTED.  
 9. ALL DIMENSIONS ARE UNLESS OTHERWISE NOTED.  
 10. ALL DIMENSIONS ARE UNLESS OTHERWISE NOTED.



W. CLYBOURN ST.

RELOCATED UTILITY CABINET BY OWNER. PAINT OR MAKE TO LOOK LIKE DOG HOUSE.

EXISTING UTILITY CABINET TO REMAIN. PAINT OR MAKE TO LOOK LIKE DOG HOUSE.

RETRACTABLE FENCE

RIPIARIAN PLANTING AREA ALONG MILWAUKEE RIVER

10' WIDE RIVERWALK PATHWAY

MASONRY SIGNAGE WITH LIGHTING

12" WIDE CONCRETE CURB W/CENTER-MOUNTED FENCING ENCOMPASSING SYNTHETIC TURF AREAS (TYP.)

794 OVERPASS

SITE PROPERTY LINE (TYP.)

BERM WITH TUNNEL

BERM

N. PLANKINTON AVE.

DOG PARK AGILITY & TOY AREA

BIO-SWALE

DOT ACCESS TO FREEWAY COLUMNS

FREEWAY COLUMNS (TYP.)

6' HT. CHAIN LINK FENCE WITH BLACK SLATS (SEE LEGEND) AROUND STEAM UTILITY AND FREEWAY PIER AREA.

CIRCULAR BENCH & PLANTER

18,100 S.F. LARGE DOG RUN

EXISTING STEAM UTILITY AREA TO REMAIN

3,900 S.F. SMALL DOG RUN

BIO-SWALE

794 OVERPASS

CMU PIERS AT FENCING (TYP.)

TWO 162 S.F. ENTRANCE VESTIBULES

6 PARKING STALLS

MOVABLE PLANTER (TYP.)

MILWAUKEE RIVER





# LANDING

